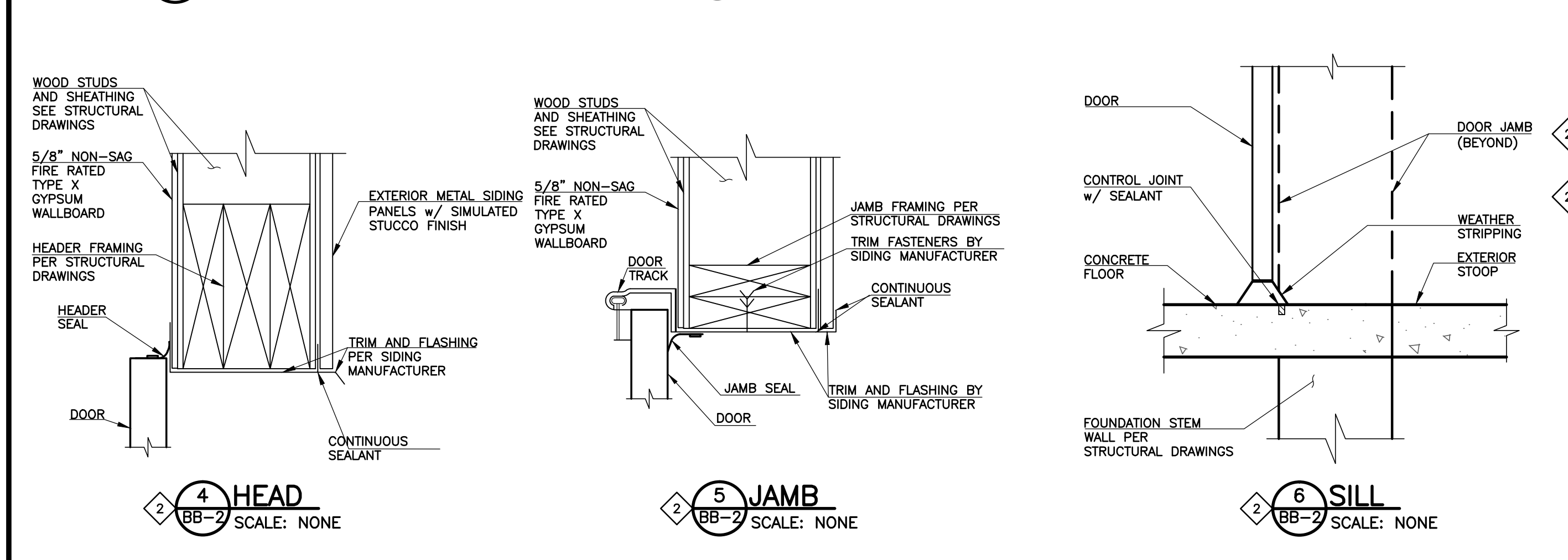
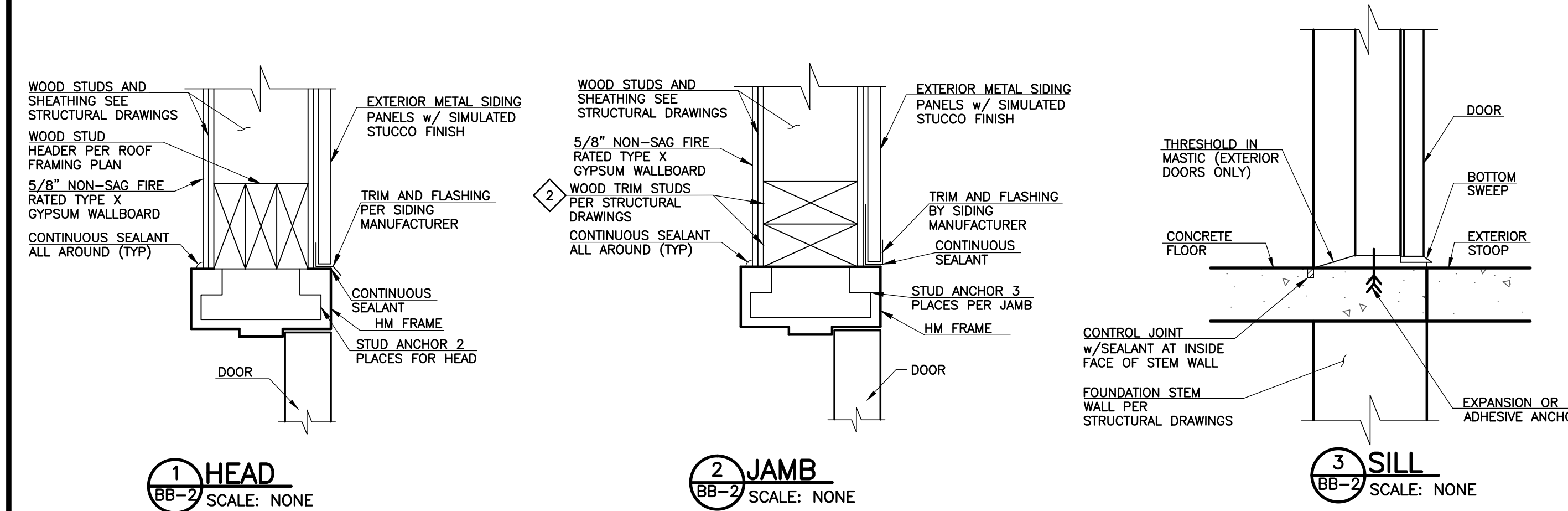


1 BLOWER BUILDING ARCHITECTURAL FLOOR PLAN
BB-2 SCALE: 1" = 5'-0"

NOTES:

- ROOM DIMENSIONS ARE BASED ON NOMINAL WALL THICKNESS OF 6-3/4" FOR GYPBOARD COVERED INTERIOR STUD WALLS.
- INTERIOR ROOM DIMENSIONS ARE FROM FACE OF FINISHED GYPBOARD TO FACE OF FINISHED GYPBOARD UNLESS OTHERWISE INDICATED.
- THERE WILL BE NO WINDOWS, OTHER THAN IN DOORS, IN THE BLOWER BUILDING.
- SEE SHEET BB-3 FOR FOUNDATION PLAN.
- PROVIDE EXIT SIGN OVER DOORS AS INDICATED:
 - MINIMUM SIZE = 10"x14"
 - VINYL CONSTRUCTION
 - ADHESIVE MOUNTING TO WALL
 - RED LETTERS ON WHITE BACKGROUND
 - MINIMUM LETTER SIZE = 6" HIGH x 2" WIDE (EXCEPT "I")
 - ACCIFORM SIGNS MODEL MEXT06V5 OR EQUAL
 - PROVIDE 12"x16"x1/16" ALUMINUM PLATE FOR MOUNTING IF WALL PANEL IS NOT SUITABLE TO PROVIDE CODE COMPLIANT SIGNAGE.
- FE: 5-lb. ABC FIRE EXTINGUISHER. WALL HUNG.
- ALL DOWNSPOUTS SHALL HAVE DRAIN PIPE EXTENDING TO ROADWAY TO DIRECT DISCHARGE TO ROAD SURFACE.

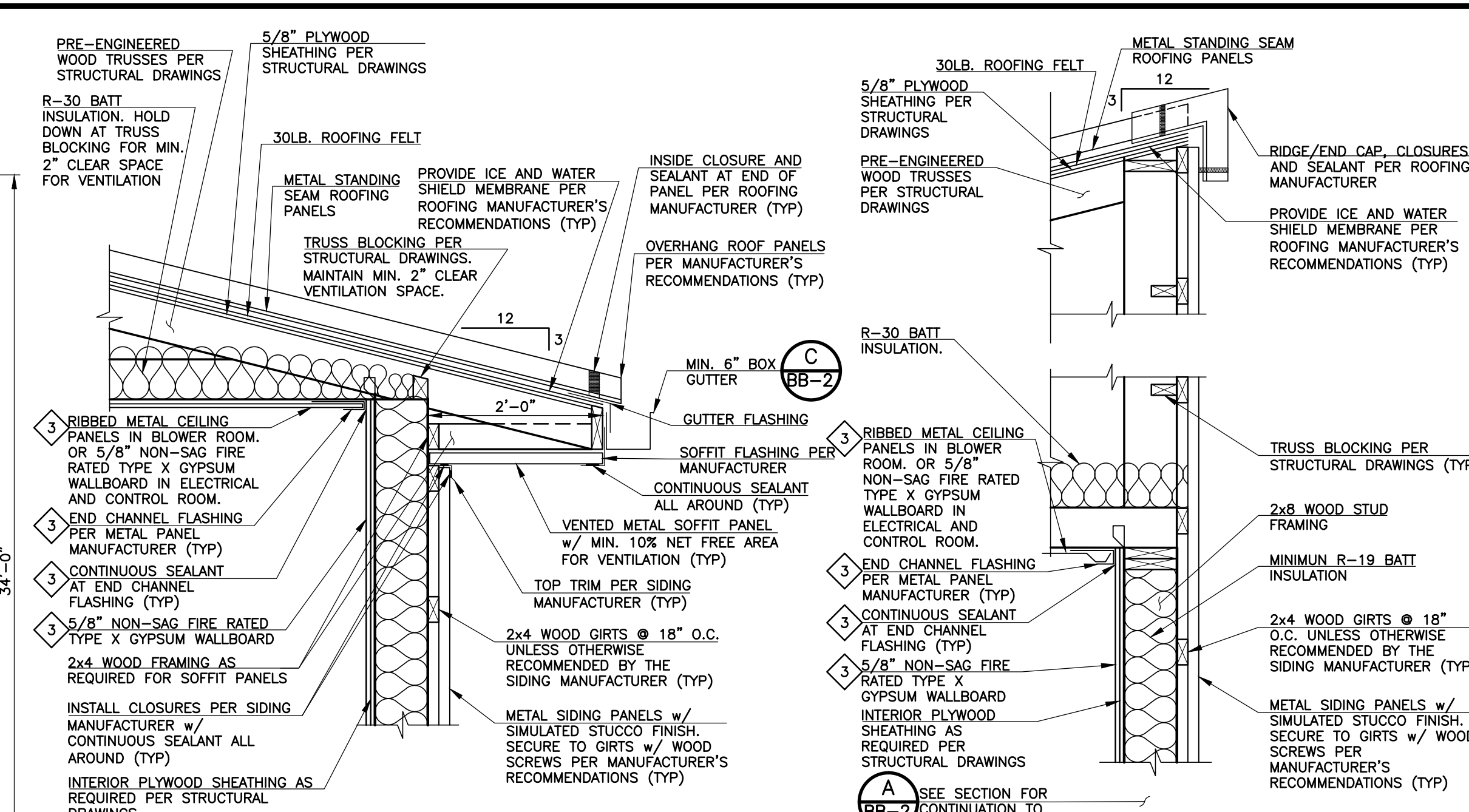


DOOR SCHEDULE									
TAG	WIDTH	HEIGHT	TYPE	HAND	HARDWARE SET	HEAD	JAMB	SILL	COMMENT
D-BB1	6'-0"	7'-0"	A	LHR	D	1	2	3	STEEL DOOR AND FRAME, STAINLESS STEEL HARDWARE w/ MECHANICAL PUSHBUTTON SECURITY SYSTEM.
D-BB2	8'-0"	10'-0"	D	-	-	5	6	7	PROVIDE PAD LOCK HASP THROUGH TRACK ABOVE FLOOR w/ INSULATED PANELS. DOOR SIZE SHOWN IS FOR CLEAR OPENING.
D-BB3	3'-0"	7'-0"	B	LHR	F	1	2	3	STEEL DOOR AND FRAME, STAINLESS STEEL HARDWARE. PROVIDE WEATHER STRIPPING AND EXTERIOR TYPE DOOR BOTTOM TO PROVIDE MAXIMUM ENVELOPE EFFICIENCY IN THE AIR-CONDITIONED ELECTRICAL AND CONTROL ROOM.
D-BB4	3'-0"	7'-0"	C	LHR	A	1	2	3	STEEL DOOR AND FRAME, STAINLESS STEEL HARDWARE w/ MECHANICAL PUSHBUTTON SECURITY SYSTEM.

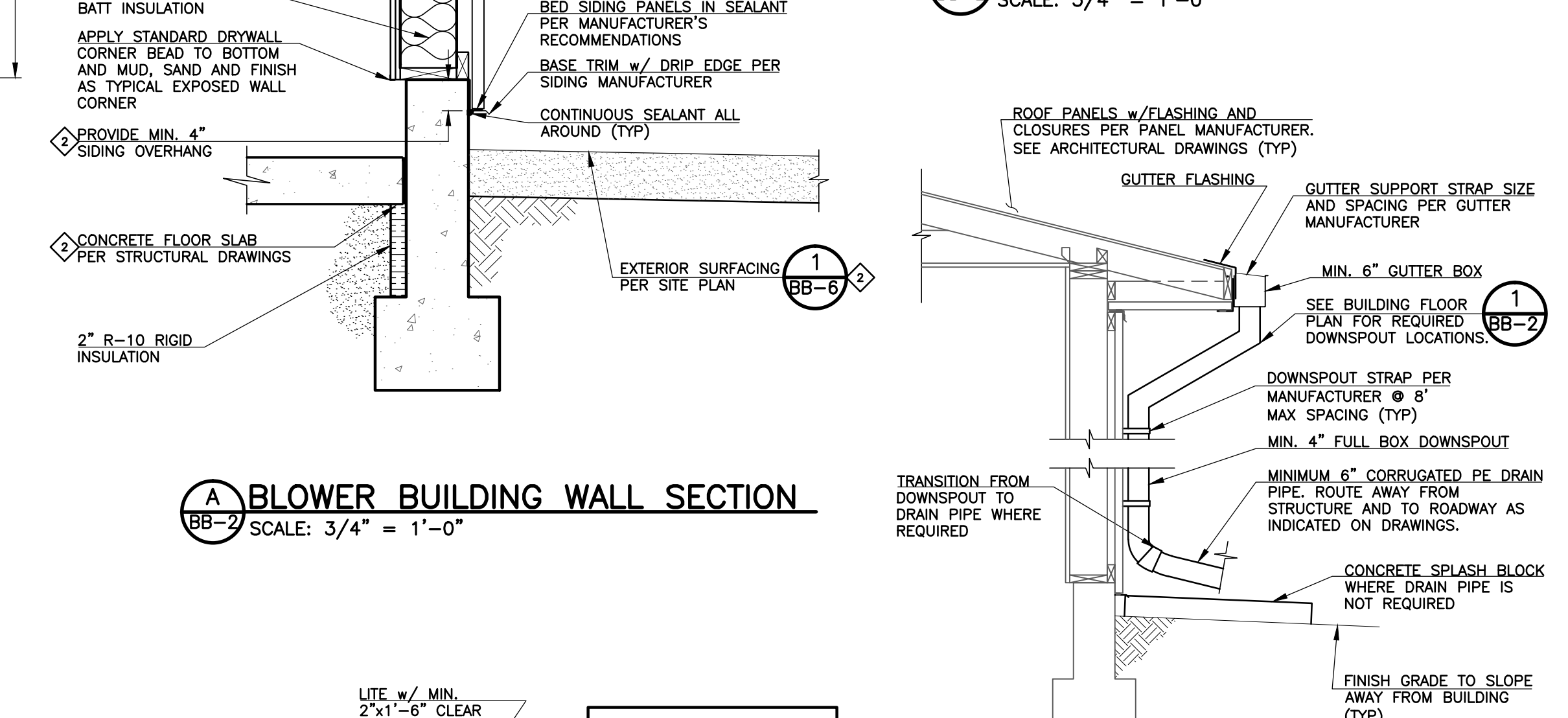
NOTES:

- REFER TO PROJECT MANUAL FOR HARDWARE SPECIFICATIONS.
- REFER TO MECHANICAL DRAWINGS FOR LOCATIONS OF DUCTWORK AND/OR EQUIPMENT.
- PROVIDE DOOR LATCH SHIELDS ON ALL OUTWARD OPENING EXTERIOR DOORS.
- ALL EXTERIOR MAN DOORS SHALL BE PROVIDED WITH MECHANICAL PUSHBUTTON SECURITY SYSTEM PER SPECIFICATIONS.

REVISIONS		
NO.	DATE	DESCRIPTION
1	03/30/2012	ISSUED FOR DESIGN TEAM DISCUSSION
2	06/21/2012	ISSUED FOR BUILDING PERMIT SUBMITTAL TO PRBD (BLOWER BUILDING)
3	07/17/2012	ISSUED FOR CONSTRUCTION PER PRBD BLDG PERMIT NO. 129081 (BLOWER BLDG)



A BLOWER BUILDING WALL SECTION
BB-2 SCALE: 3/4" = 1'-0"



C GUTTER AND DOWNSPOUT SECTION
BB-2 SCALE: 1/2" = 1'-0"

ROOM FINISH SCHEDULE				
	FLOOR	WALLS	CEILING	COMMENT
ROOMS	CONCRETE, SEALED	CWR, PAINTED	CONC STEM PAINTED	CWR, PAINTED
BLOWER ROOM	X	X	X	X
ELECTRICAL AND CONTROL ROOM	X	X	X	X

ARCHITECTURAL PLAN AND DETAILS
HAROLD D. THOMPSON REGIONAL
WATER RECLAMATION FACILITY
LOWER FOUNTAIN METROPOLITAN SEWAGE DISPOSAL DISTRICT

DRAWN MAM
DESIGNED MAM
CHECKED XXX
DATE APRIL 2009
PROJECT NO. 20166.362
GMS FILE NO. XXXX

GMS, INC.
CONSULTING ENGINEERS
611 N. WEBER, SUITE 300
COLORADO SPRINGS, COLORADO 80903

SHEET
BB-2
OF
1

\\FMS020\0166362\B02.dwg
PLOT STYLE FILE: 10502.ctb
FILENAME: g:\FMS020\0166362\B02.dwg