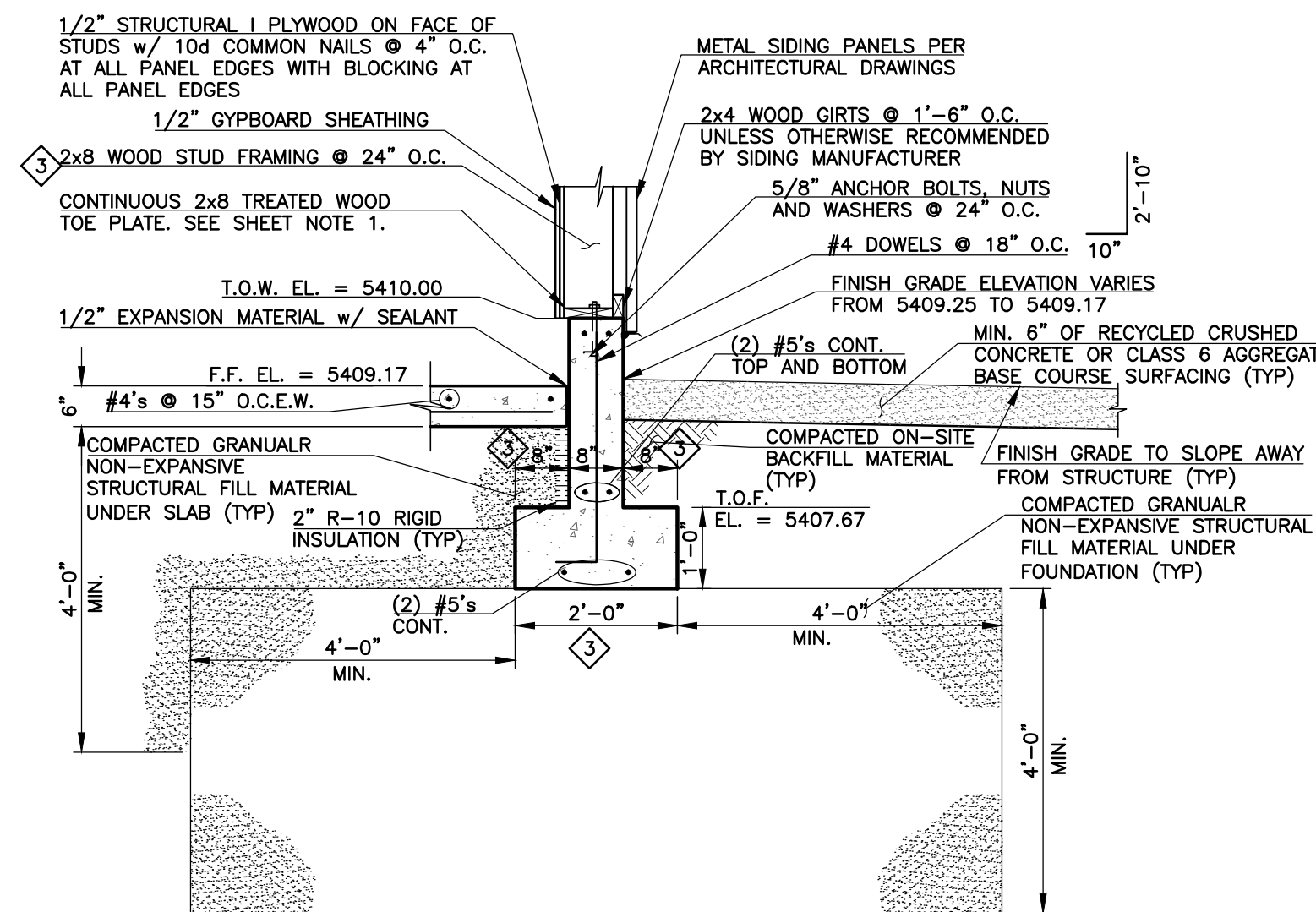
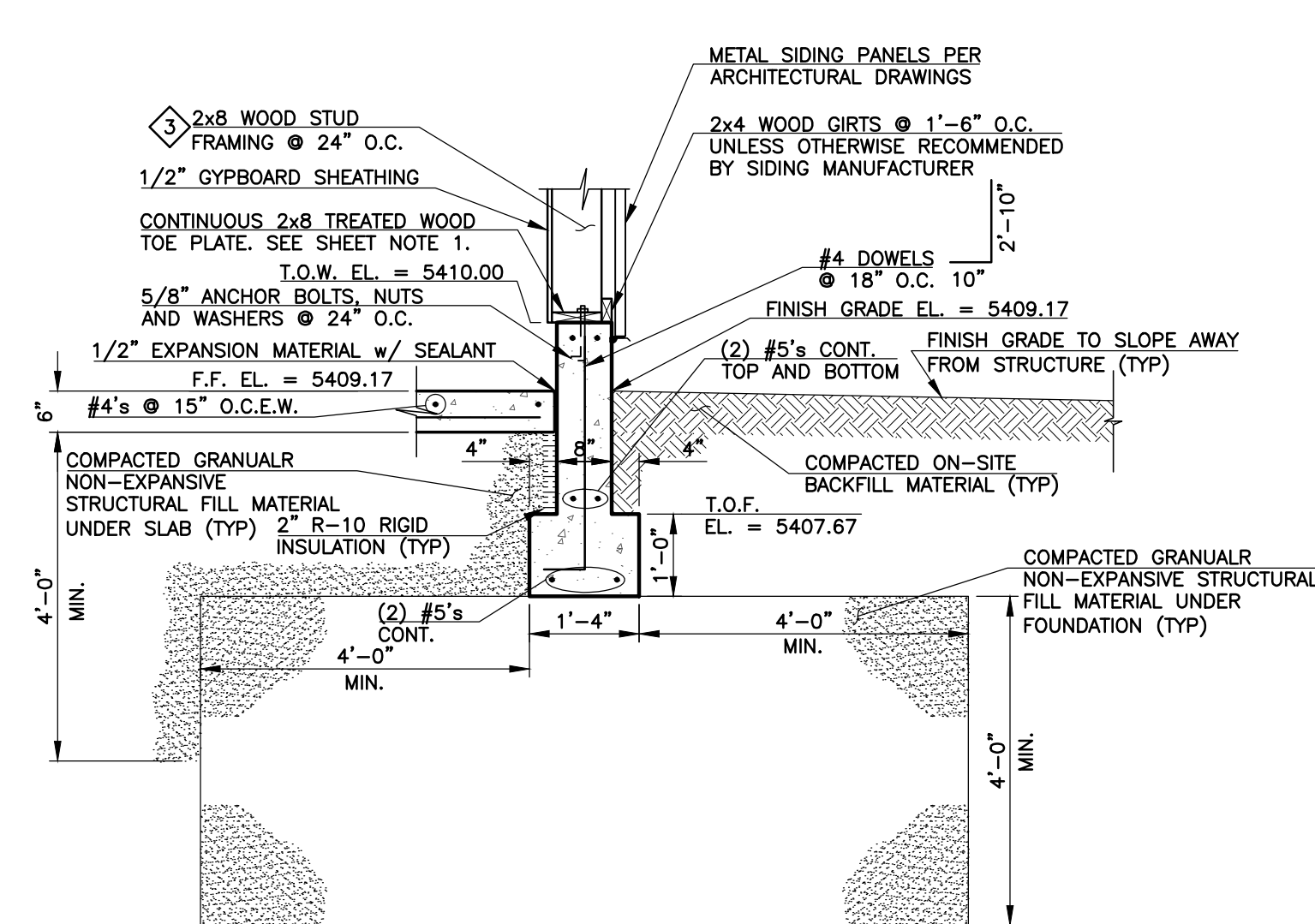


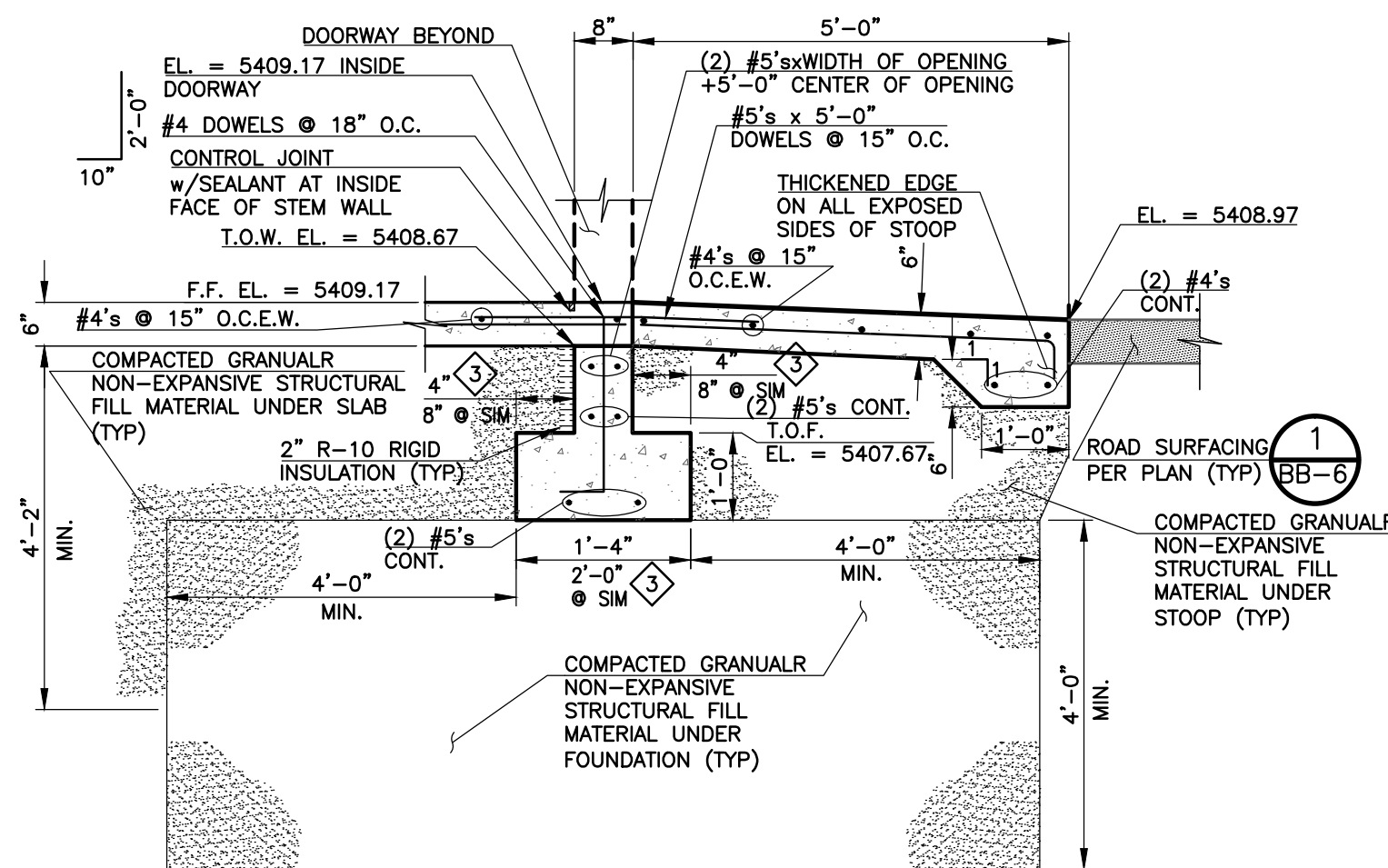
A EXTERIOR WALL SECTION
BB-4 SCALE: 1/2" = 1'-0"



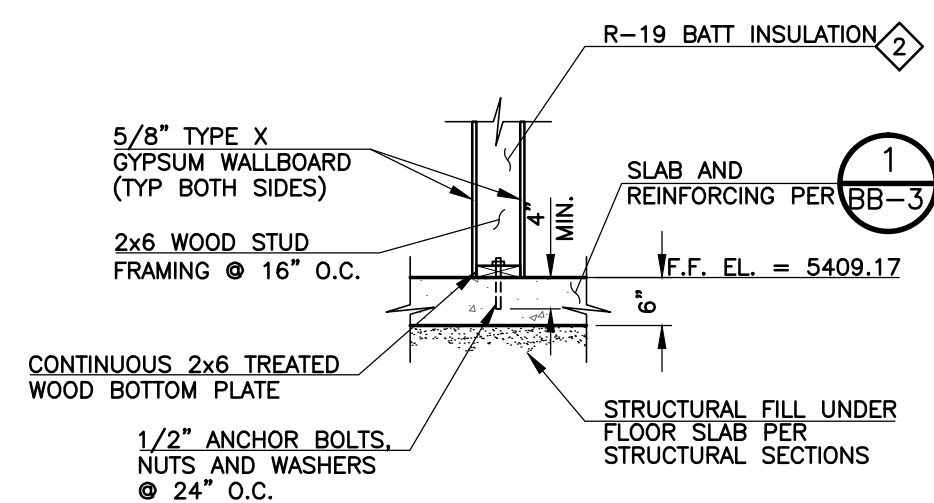
B EXTERIOR WALL SECTION
BB-4 SCALE: 1/2" = 1'-0"



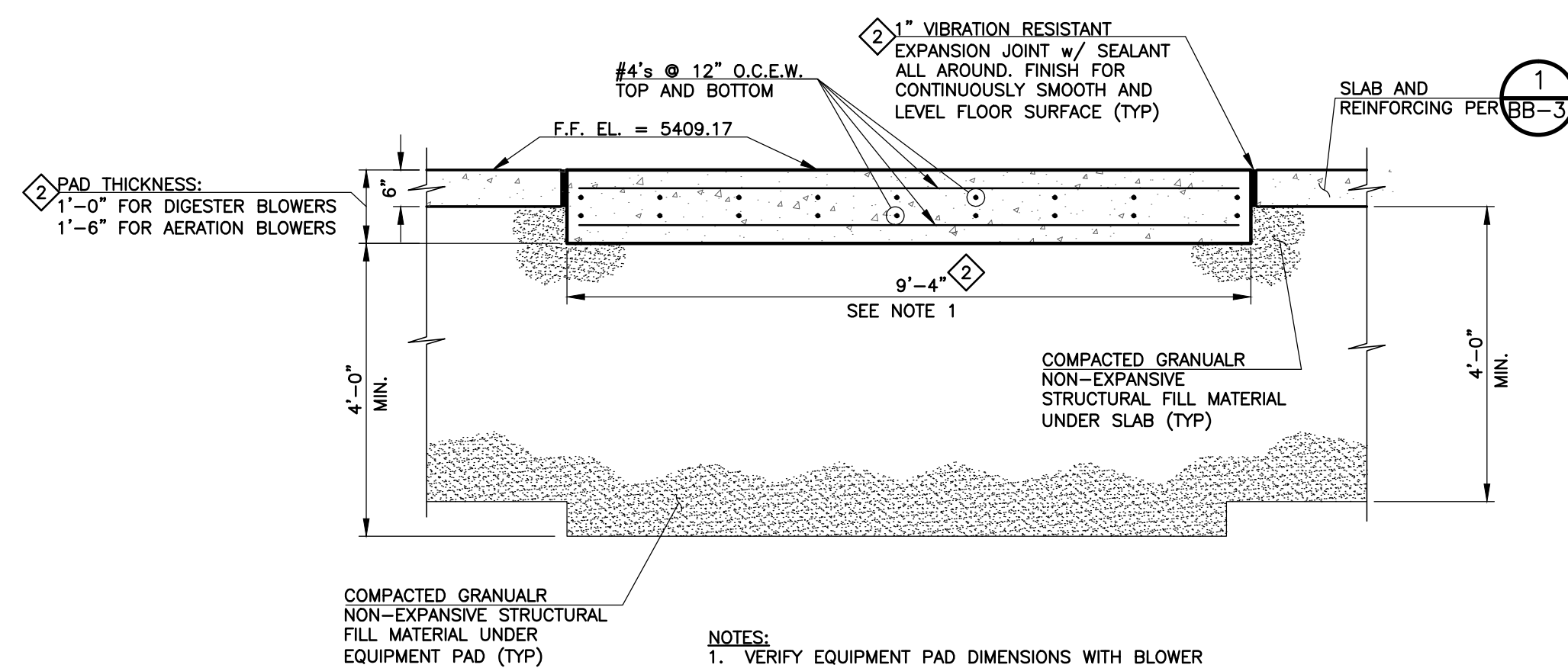
C EXTERIOR WALL SECTION
BB-4 SCALE: 1/2" = 1'-0"



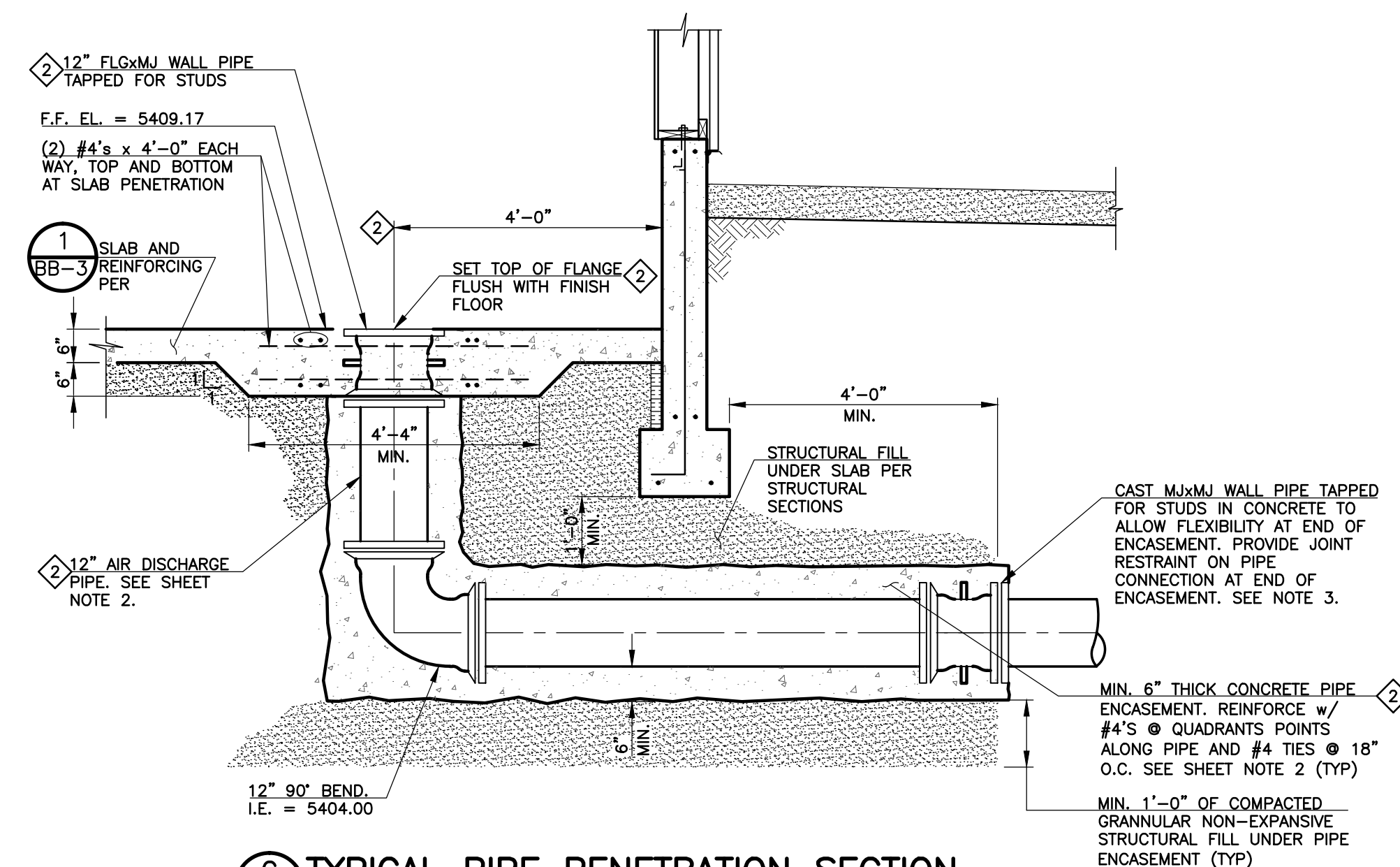
D EXTERIOR WALL SECTION AT DOOR
BB-4 SCALE: 1/2" = 1'-0"



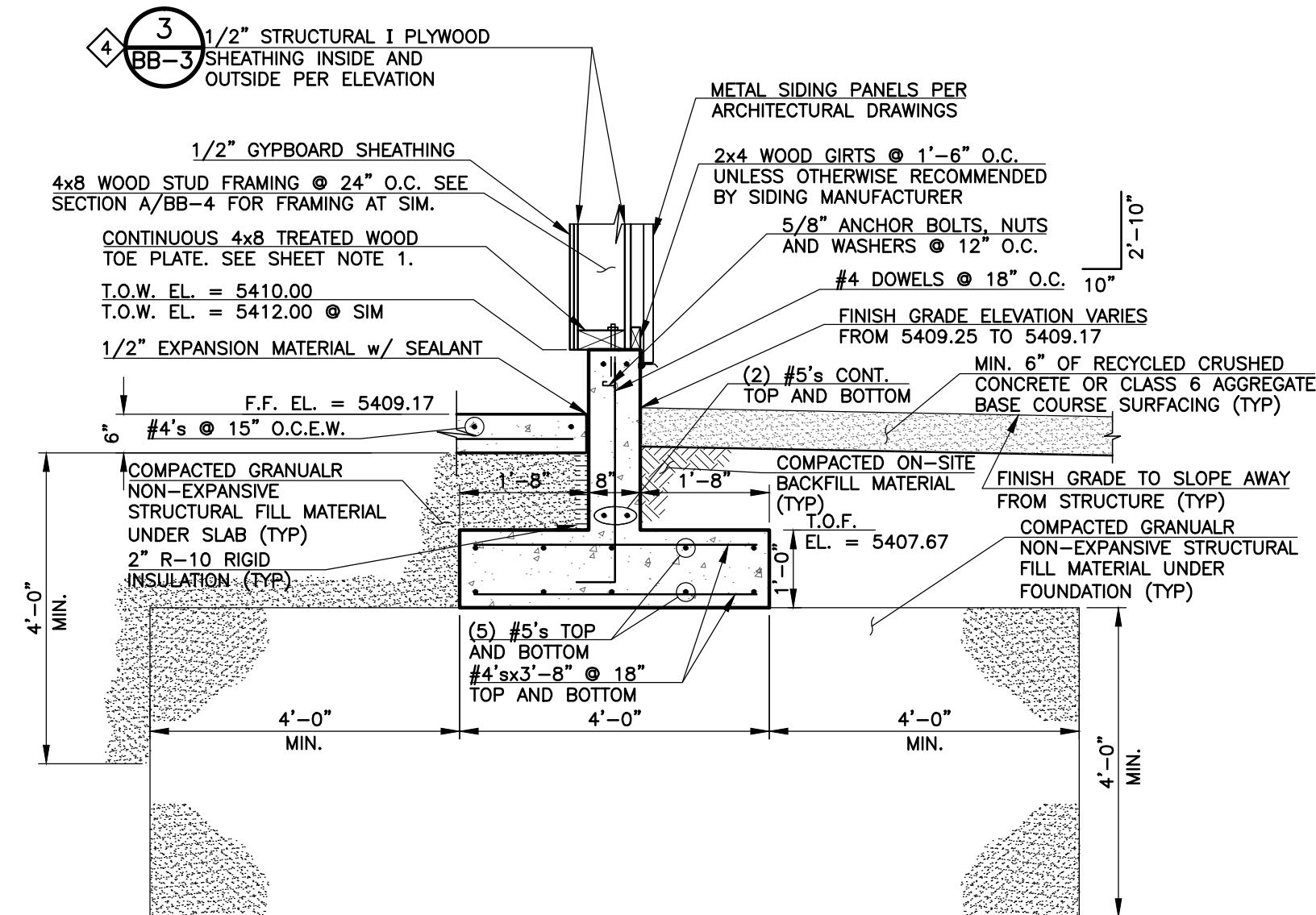
E INTERIOR WALL SECTION
BB-4 SCALE: 1/2" = 1'-0"



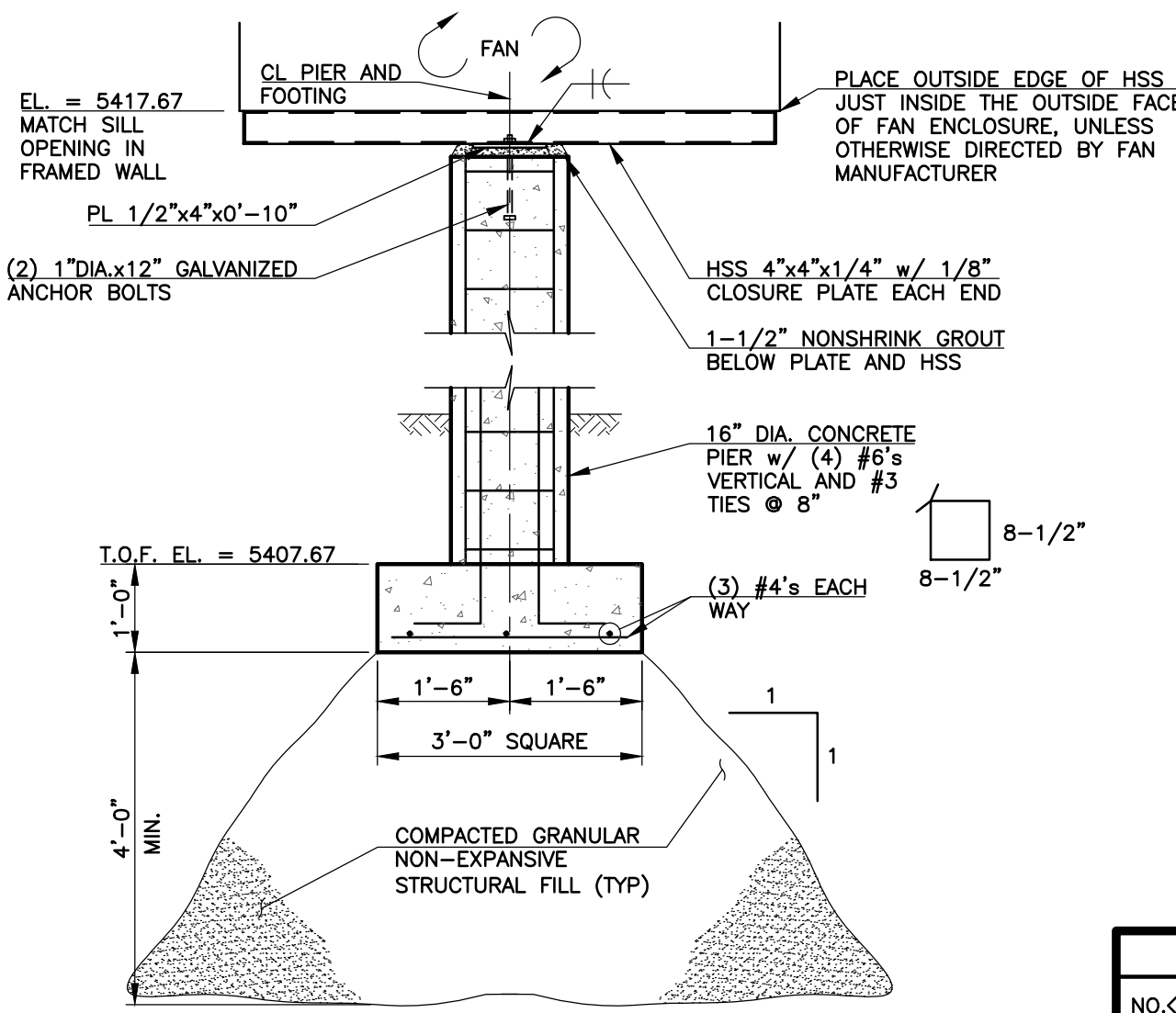
F EQUIPMENT PAD SECTION
BB-4 SCALE: 1/2" = 1'-0"



G TYPICAL PIPE PENETRATION SECTION
BB-4 SCALE: 1/2" = 1'-0"



H EXTERIOR WALL SECTION
BB-4 SCALE: 1/2" = 1'-0"



I FAN SUPPORT DETAIL
BB-4 SCALE: 1/2" = 1'-0"

SHEET NOTES:

- SET TOE PLATE AND STUD FRAMING FOR EXTERIOR WALLS BACK FROM EDGE OF FOUNDATION SO THE NAILING FACE OF THE HORIZONTAL GIRTS IS FLUSH WITH THE OUTSIDE FACE OF FOUNDATION.
- ALL AIR DISCHARGE PIPE AND FITTINGS SHALL BE UNLINED DUCTILE IRON. ALL GASKETS SHALL BE RATED FOR A CONTINUOUS OPERATING TEMPERATURE OF 300° F. ALTERNATIVE PIPE MATERIAL: WELDED STEEL PIPE WITH VAN STONE FLANGE CONNECTION SET AT 12" AFF. IF ALTERNATE PIPE MATERIAL IS SELECTED THE CONCRETE ENCASEMENT MAY BE DELETED AND THE HORIZONTAL PIPE END AT 4'-0" FROM EDGE OF FOOTER SHALL HAVE A LONG BODY SOLID SLEEVE TRANSITION COUPLING INSTALLED FOR CONTINUATION OF YARD PIPING.
- ALTERNATIVE: CAST MxMJ SOLID SLEEVE WITH HALF OF FITTING EXPOSED. USE STANDARD MJ T-HEAD BOLTS IN LIEU OF TAPPED FITTING.

REVISIONS		
NO.	DATE	DESCRIPTION
1	03/30/2012	ISSUED FOR DESIGN TEAM DISCUSSION
2	06/21/2012	ISSUED FOR BUILDING PERMIT SUBMITTAL TO PRBDO (BLOWER BUILDING)
3	06/29/2012	ISSUED FOR BUILDING PERMIT SUBMITTAL TO PRBDO (BLOWER BUILDING)
4	07/17/2012	ISSUED FOR CONSTRUCTION PER PRBDO BLDG PERMIT NO. 129081 (BLOWER BLDG)

THIS DRAWING IS THE PROPERTY OF GMS, INC., AND IS NOT TO BE REPRODUCED, MODIFIED OR USED FOR ANY OTHER PROJECT OR EXTENSION OF THIS PROJECT EXCEPT BY AGREEMENT WITH THIS COMPANY.

© 2012 GMS, INC.

STRUCTURAL SECTIONS
HAROLD D. THOMPSON REGIONAL
WATER RECLAMATION FACILITY
LOWER FOUNTAIN METROPOLITAN SEWAGE DISPOSAL DISTRICT

DRAWN: MAM
DESIGNED: MAM
CHECKED: XXX
DATE: APRIL 2009
PROJECT NO.: 20166.362
GMS FILE NO.: XXXX

GMS, INC.
CONSULTING ENGINEERS
611 N. WEBER, SUITE 300
COLORADO SPRINGS, COLORADO 80903

SHEET
BB-4
OF
—

XREF FILENAME: G:\
BASE DWG: G:\
PLOT STYLE FILE: 10502.dwg
FILENAME: g:\LFMSD\20166\362\BB4\BB4.dwg