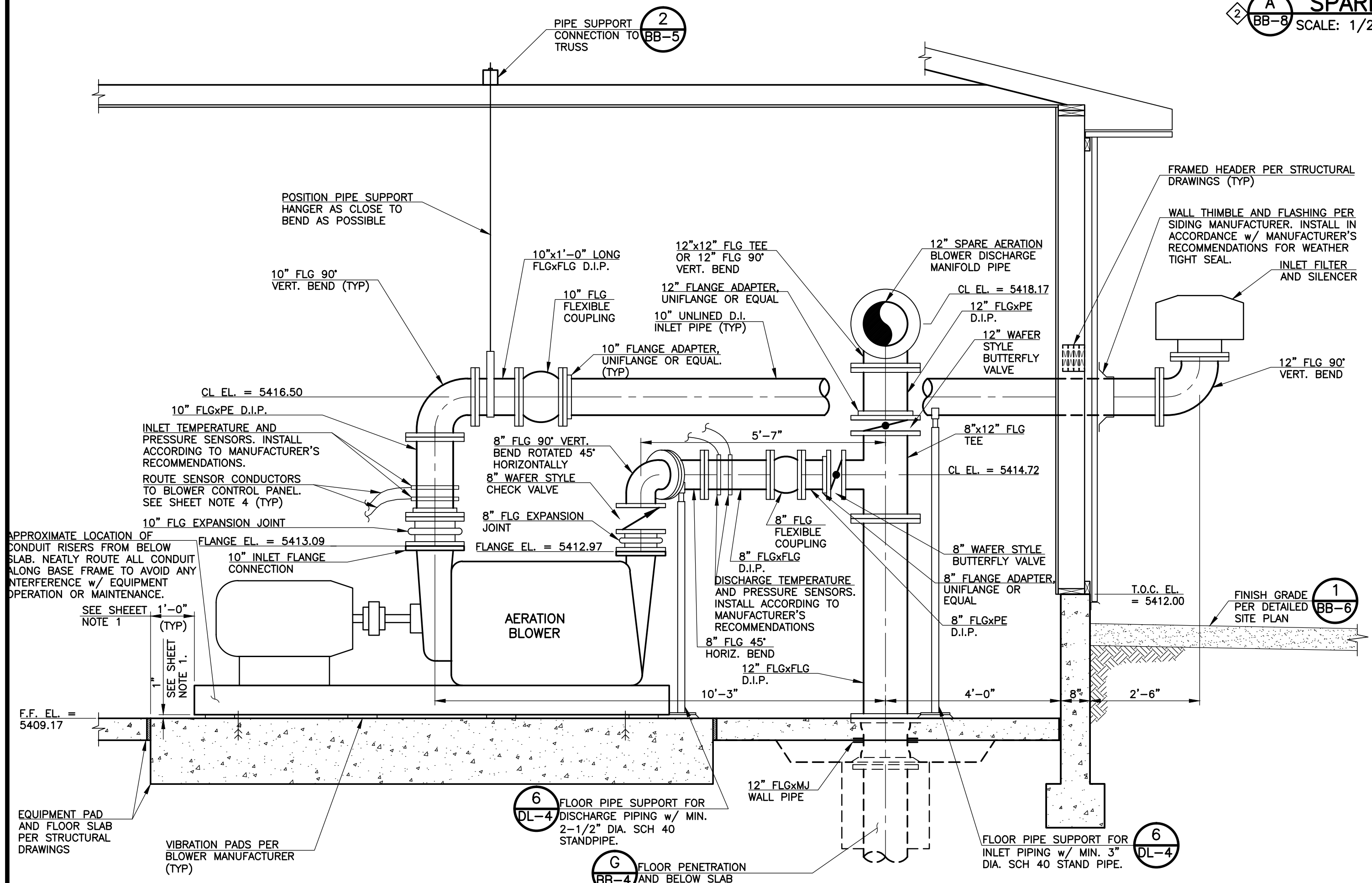
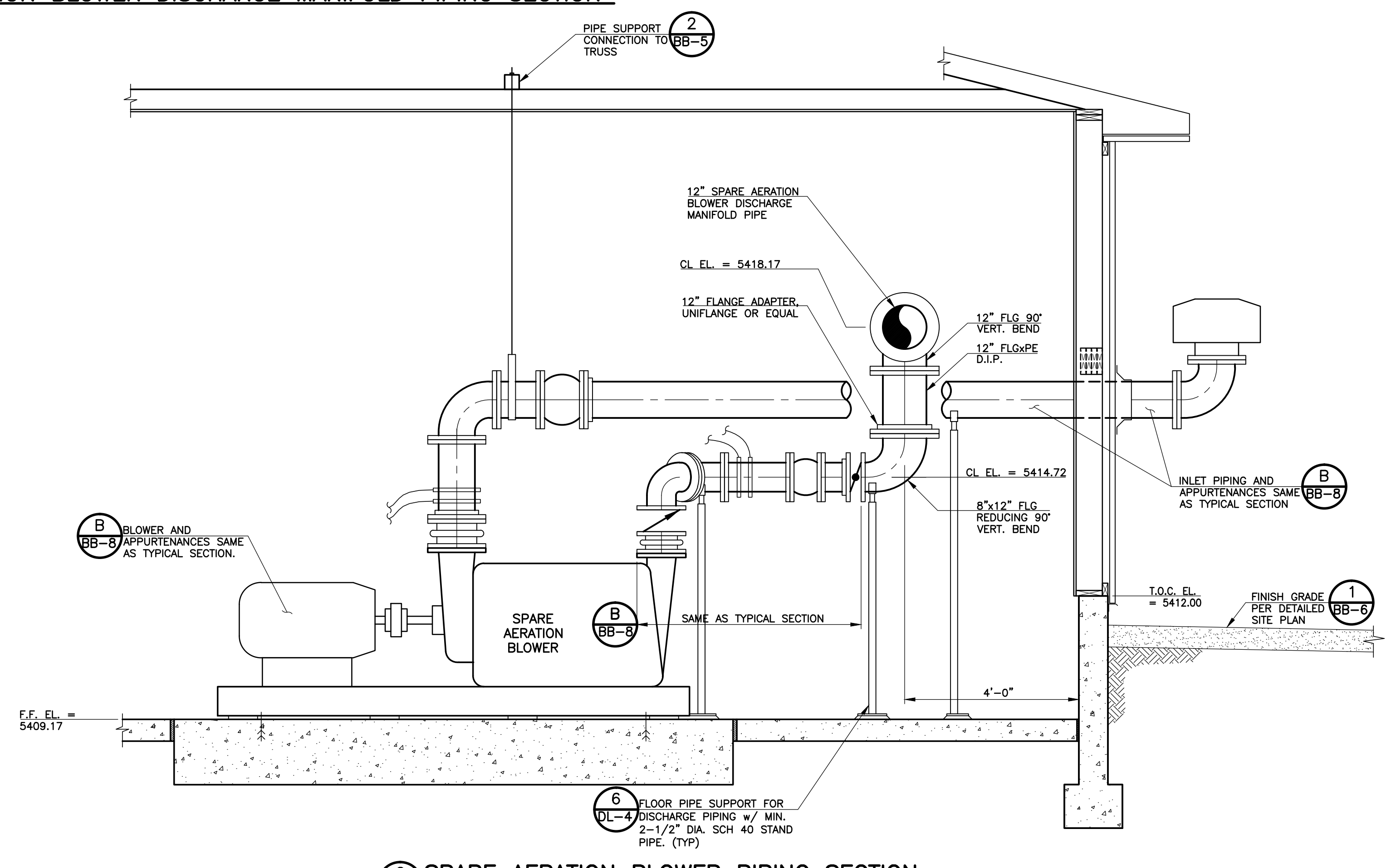


A SPARE AERATION BLOWER DISCHARGE MANIFOLD PIPING SECTION
 SCALE: 1/2" = 1'-0"



B TYPICAL AERATION BLOWER PIPING SECTION
 SCALE: 1/2" = 1'-0"



C SPARE AERATION BLOWER PIPING SECTION
 SCALE: 1/2" = 1'-0"

- SHEET NOTES:**
1. THE HORIZONTAL AND VERTICAL POSITION OF THE BLOWER IS DIRECTLY RELATED TO THE POSITION OF THE ASSOCIATED PIPING. THE BLOWER POSITION MAY BE ADJUSTED SO THAT THE HORIZONTAL AND VERTICAL POSITION OF THE PIPING SHOWN IS MAINTAINED.
 2. ALL AIR DISCHARGE PIPING, VALVES, COUPLINGS, GASKETS AND APPURTENANCES MUST BE RATED FOR A MINIMUM CONTINUOUS OPERATING TEMPERATURE OF 300° F.
 3. PROVIDE ALL PIPE SUPPORTS SHOWN AND AS NECESSARY TO ENSURE NO STRESS IS PLACED ON BLOWER CONNECTIONS.
 4. PROVIDE FLEXIBLE CONDUIT CONNECTIONS TO ALL EQUIPMENT AND INSTRUMENTS.
 5. ALL DUCTILE IRON AIR PIPE SHALL BE UNLINED. DISCHARGE AIR PIPE SHALL BE PAINTED WITH A COATING SYSTEM RATED FOR A CONTINUOUS OPERATING TEMPERATURE OF 300° F.
 6. FLANGE ADAPTERS ARE SHOWN ADJACENT TO WAFER STYLE VALVES FOR EASE OF INSTALLATION AND REMOVAL OF THOSE VALVES. DESIGN BASIS PRODUCT IS UNIFLANGE UFA200 BY FORD METER BOX INC. CONTRACTOR SHALL VERIFY FIT AND COMPATIBILITY WITH ACTUAL EQUIPMENT PROVIDED AND ADJUST LOCATION OF FLANGE ADAPTERS AS NECESSARY.

REVISIONS		
NO.	DATE	DESCRIPTION
1	11/02/2010	PRELIMINARY ISSUE FOR PIPE COST QUOTATIONS
2	06/14/2012	ISSUED FOR VALUE ENGINEERING REVIEW AND COMMENT
3	06/21/2012	ISSUED FOR BUILDING PERMIT SUBMITTAL TO PFRBD (BLOWER BUILDING)
4	07/17/2012	ISSUED FOR CONSTRUCTION PER PFRBD BLDG PERMIT NO. 129081 (BLOWER BLDG)

THIS DRAWING IS THE PROPERTY OF GMS, INC., AND IS NOT TO BE REPRODUCED, MODIFIED OR USED FOR ANY OTHER PROJECT OR EXTENSION OF THIS PROJECT EXCEPT BY AGREEMENT WITH THIS COMPANY.

2012 GMS, INC.

PROCESS EQUIPMENT AND PIPING SECTIONS
 HAROLD D. THOMPSON REGIONAL WATER RECLAMATION FACILITY
 LOWER FOUNTAIN METROPOLITAN SEWAGE DISPOSAL DISTRICT

DRAWN	MAM/SKC
CHECKED	RJS
DATE	MAY 2012
PROJECT NO.	20166.362
GMS FILE NO.	2599

GMS, INC.
 CONSULTING ENGINEERS
 611 N. WEBER, SUITE 300
 COLORADO SPRINGS, COLORADO 80903

SHEET **BB-8** OF -

G:\PLANS\2012\166362\BB8.dwg, BB8, 7/17/2012, 1:38:10 PM, ac, DWG TO PDF, PLOT, 1:1
 XREF FILENAME: G:\BASE DWG: G:\PLOT STYLE FILE: 1000.ctb
 FILENAME: G:\PLANS\2012\166362\BB8.dwg