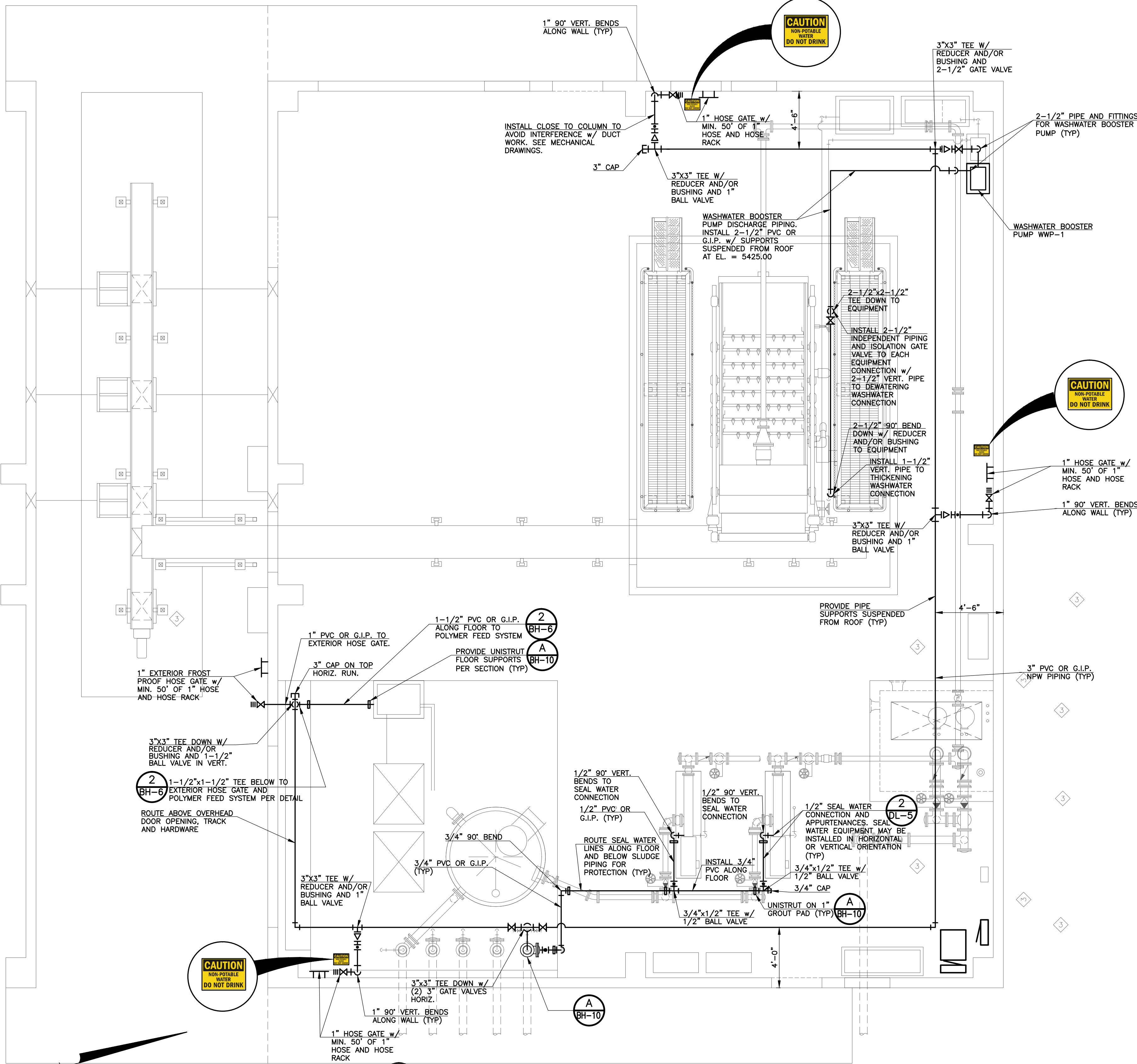


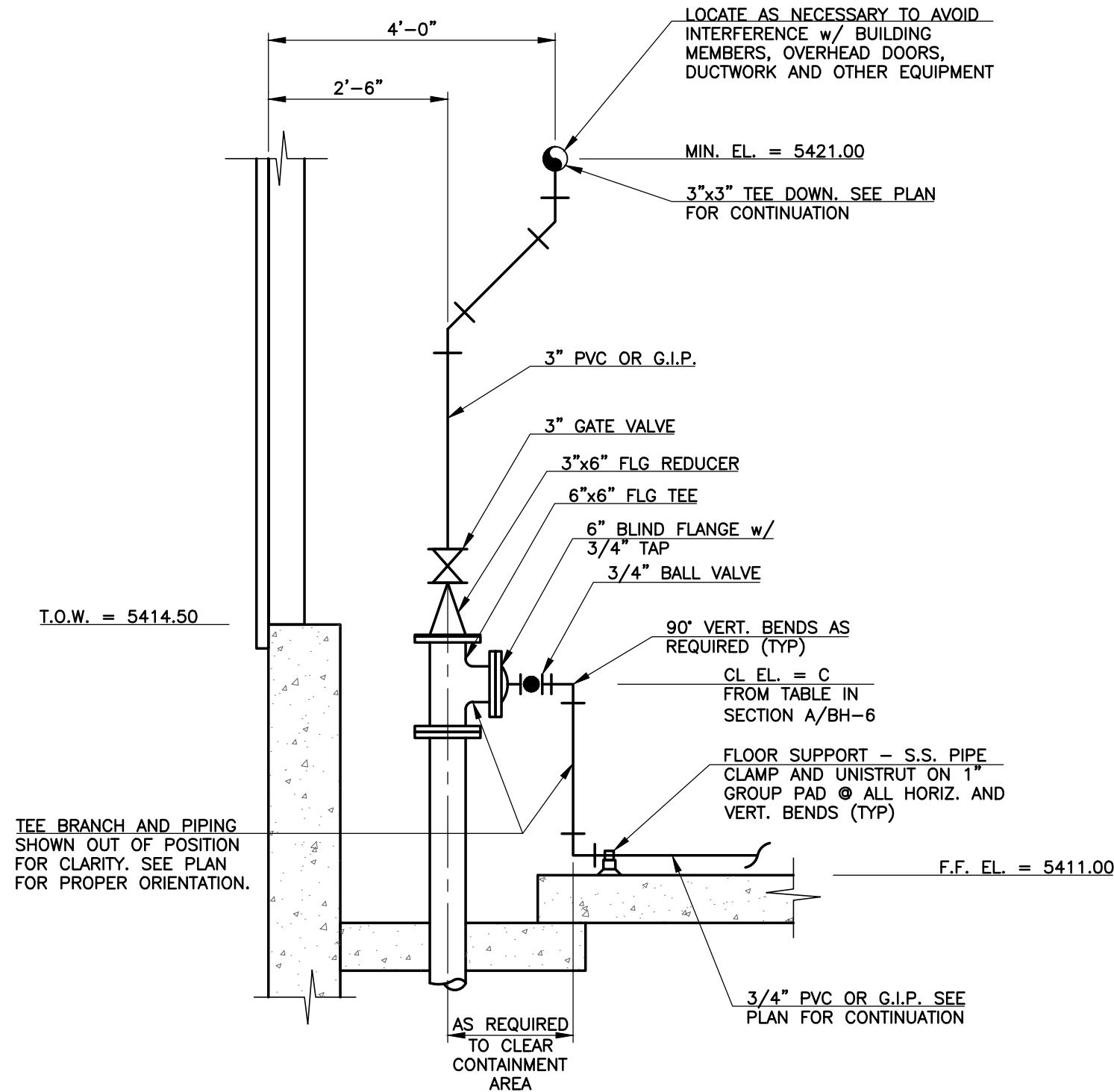
G:\UNSD\2010\6252\BH10\BH10.dwg, BH10, 3/4/2013 11:35:56 AM, s.dwg to PDF, v3.11



1 NON-POTABLE WATER PIPING PLAN
BH-10 SCALE: 1/4" = 1' - 0"

NOTES:

1. ALL PVC PIPING SHALL BE SCHEDULE 80 SOLVENT WELD UNLESS OTHERWISE NOTED.
2. VERIFY WASHWATER CONNECTION REQUIREMENTS ON THICKENING AND DEWATERING EQUIPMENT WITH APPROVED SHOP SUBMITTAL DOCUMENTS. PROVIDE ALL REDUCERS, BUSHINGS AND FITTINGS REQUIRED TO COMPLETE CONNECTION TO EQUIPMENT.
3. GATE VALVES MAY BE FLANGED OR THREADED ENDS. PROVIDE SOLVENT WELD ADAPTER FOR SUPPLIED END CONNECTIONS. INSTALL UNION AT EACH GATE VALVE LOCATION FOR EASE OF REMOVAL AND REPLACEMENT.
4. ALL BALL VALVES SHALL BE TRUE UNION BALL VALVES.



A NPW PIPING SECTION
BH-10 SCALE: 1/2" = 1' - 0"

REVISIONS		
NO.	DATE	DESCRIPTION
1	10/11/2012	ISSUED FOR VALUE ENGINEERING REVIEW NO. 1
2	11/15/2012	ISSUED FOR OWNER PRELIMINARY REVIEW
3	11/29/2012	ISSUED FOR VALUE ENGINEERING REVIEW AND PRICING
4	01/07/2013	ISSUED FOR BUILDING PERMIT SUBMITTAL TO PPBDO (BIOLOGICAL HANDLING COMPLEX)
5	03/14/2013	ISSUED FOR CONSTRUCTION PER PPBDO BLDG PERMIT #65132 (BIOLOGICAL HANDLING COMPLEX)

THIS DRAWING IS THE
PROPERTY OF GMS, INC.,
AND IS NOT TO BE RE-
PRODUCED, MODIFIED OR
USED FOR ANY OTHER
PROJECT OR EXTENSION
OF THIS PROJECT EXCEPT
BY AGREEMENT WITH THIS
COMPANY.

© 2012 GMS, INC.

NON-POTABLE WATER PIPING PLAN AND SECTION
HAROLD D. THOMPSON REGIONAL WATER RECLAMATION FACILITY
LOWER FOUNTAIN METROPOLITAN SEWAGE DISPOSAL DISTRICT

DRAWN SKC
DESIGNED MAM
CHECKED RJS
DATE SEPTEMBER 2012
PROJECT NO. 20166.382
GMS FILE NO. 2599

GMS, INC.
CONSULTING ENGINEERS
611 N. WEBER, SUITE 300
COLORADO SPRINGS, COLORADO 80903

SHEET
BH-10
OF
—

XREF FILENAME: G:\
BASE DWG: G:\
PLOT STYLE FILE: 1055C.DWG
FILENAME: G:\LTM500\20166\382\BH10\BH10.DWG