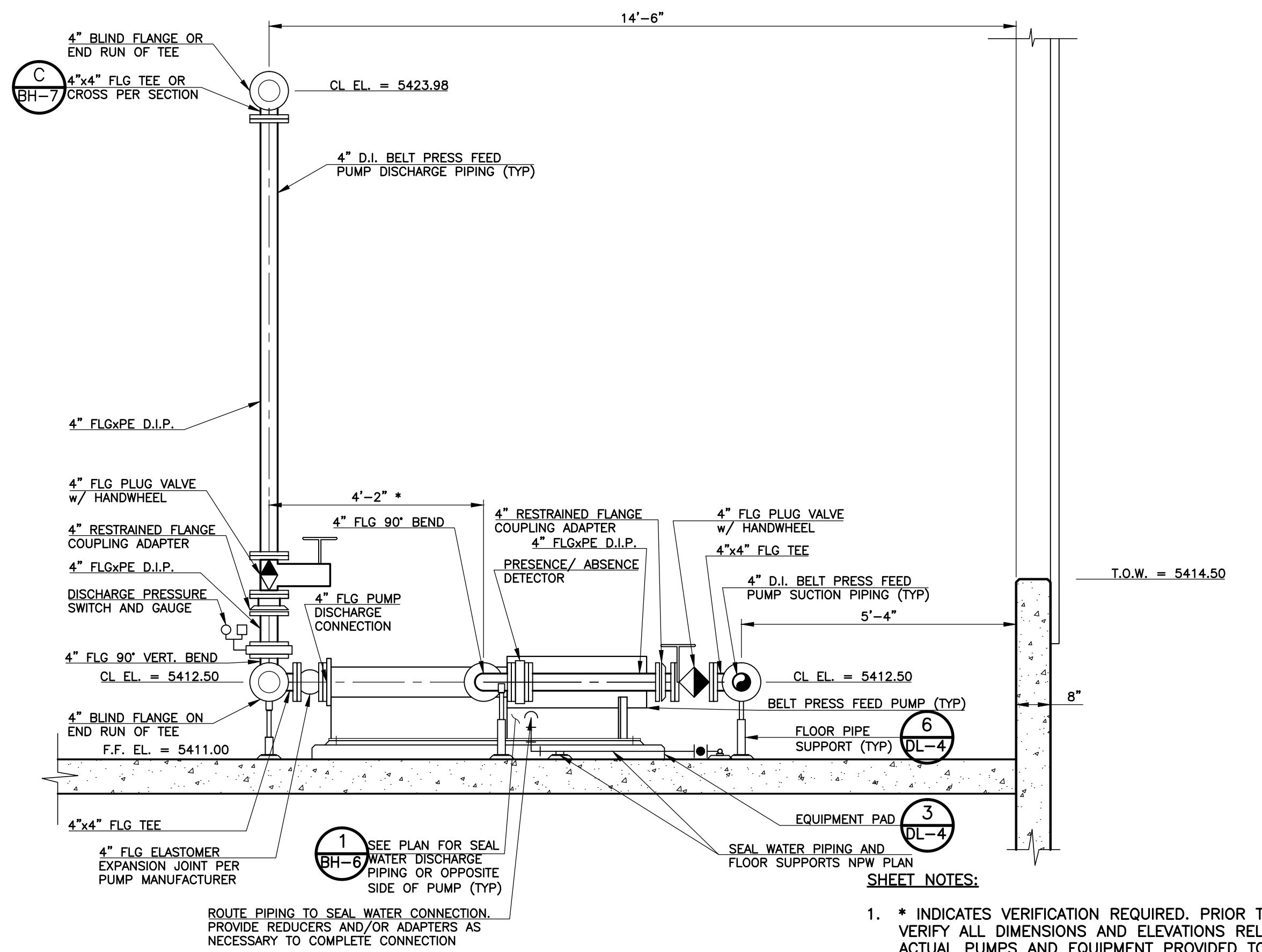


- NOTES:
- SUPPLEMENTAL SUPPORT MEMBERS SHALL BE DESIGNED AND PROVIDED BY THE BUILDING MANUFACTURER TO SUPPORT THE EQUIPMENT SHOWN WITH A BOTTOM FLANGE WIDTH NO LESS THAN 8". REFER TO THE PARTIAL ROOF PLAN ON SHEET BH-5 FOR DETAILS ON EACH LOAD.
 - THE BOTTOM ELEVATION OF THE SUPPLEMENTAL SUPPORT MEMBERS ARE GIVEN IN THE TABLE AT RIGHT AND MAY VARY ACCORDING TO THE BUILDING MANUFACTURER DEPENDING UPON HIS DESIGN. THESE ELEVATIONS SHALL BE VERIFIED BY THE CONTRACTOR AND BUILDING MANUFACTURER AND COORDINATED WITH THE EQUIPMENT SUPPLIERS TO ENSURE COMPATIBILITY.
 - EQUIPMENT SUPPORTS SHALL BE DESIGNED AND PROVIDED BY THE EQUIPMENT MANUFACTURER. CONNECTION OF EQUIPMENT SUPPORTS TO SUPPLEMENTAL SUPPORT MEMBERS SHALL BE BY A BOLTED CONNECTION DESIGNED BY THE EQUIPMENT MANUFACTURER. SUPPORT DIMENSIONS AND CONNECTION TEMPLATES SHALL BE VERIFIED WITH THE BUILDING MANUFACTURER AND EQUIPMENT MANUFACTURER TO ENSURE COMPATIBILITY OF ENTIRE SUPPORT SYSTEM.

ELEVATION TABLE FOR BOTTOM ELEVATION OF SUPPLEMENTAL SUPPORTS

LOCATION DESCRIPTION	ELEVATION
1 OPEN END SUPPORT FOR SCV-1	5431.94
2 MIDDLE SUPPORT FOR SCV-1	5433.06
3 MIDDLE SUPPORT FOR SCV-1	5434.19
4 DRIVE END SUPPORT FOR SCV-1	5434.06
5 DRIVE END SUPPORT FOR BCV-1	5434.56
6 DRIVE END SUPPORT FOR BCV-1	5434.44

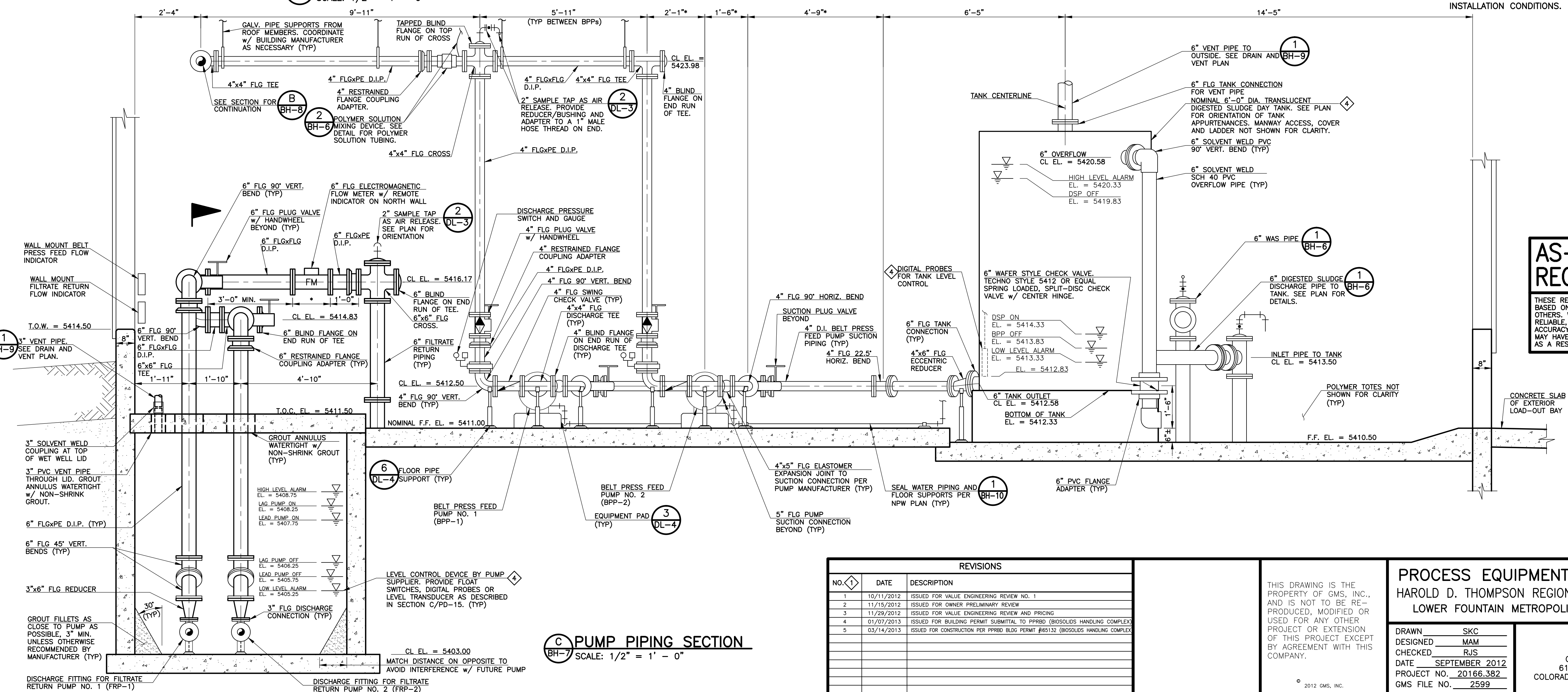
A SECTION
BH-7 SCALE: 1/2" = 1' - 0"



B TYPICAL PUMP PIPING SECTION
BH-7 SCALE: 1/2" = 1' - 0"

- SHEET NOTES:
- * INDICATES VERIFICATION REQUIRED. PRIOR TO CONSTRUCTION, VERIFY ALL DIMENSIONS AND ELEVATIONS RELATIVE TO THE ACTUAL PUMPS AND EQUIPMENT PROVIDED TO ENSURE PROPER ALIGNMENTS AND INSTALLATION CONDITIONS.
 - ALL FLOOR TYPE PIPE SUPPORTS SHALL BE PROVIDED AS HOT DIP GALVANIZED.
 - CONTRACTOR MAY MAKE MINOR ADJUSTMENTS TO THE LOCATIONS OF THE PIPE SUPPORTS SHOWN TO ACCOMMODATE INSTALLATION CONDITIONS.

NOTES:



C PUMP PIPING SECTION
BH-7 SCALE: 1/2" = 1' - 0"

AS-CONSTRUCTED RECORD DRAWINGS

THESE RECORD DRAWINGS HAVE BEEN PREPARED BASED ON INFORMATION SUBMITTED, IN PART, BY OTHERS. WHILE THIS INFORMATION IS BELIEVED TO BE RELIABLE, THE ENGINEER IS NOT RESPONSIBLE FOR ITS ACCURACY, NOR FOR ERRORS OR OMISSIONS WHICH MAY HAVE BEEN INCORPORATED INTO THIS DOCUMENT AS A RESULT. MARCH, 2013

REVISIONS		
NO.	DATE	DESCRIPTION
1	10/11/2012	ISSUED FOR VALUE ENGINEERING REVIEW NO. 1
2	11/15/2012	ISSUED FOR OWNER PRELIMINARY REVIEW
3	11/29/2012	ISSUED FOR VALUE ENGINEERING REVIEW AND PRICING
4	01/07/2013	ISSUED FOR BUILDING PERMIT SUBMITTAL TO PPHD (BROSOLDS HANDLING COMPLEX)
5	03/14/2013	ISSUED FOR CONSTRUCTION PER PPHD BLDG PERMIT #65132 (BROSOLDS HANDLING COMPLEX)

THIS DRAWING IS THE PROPERTY OF GMS, INC., AND IS NOT TO BE REPRODUCED, MODIFIED OR USED FOR ANY OTHER PROJECT OR EXTENSION OF THIS PROJECT EXCEPT BY AGREEMENT WITH THIS COMPANY.

PROCESS EQUIPMENT AND PIPING SECTIONS
HAROLD D. THOMPSON REGIONAL WATER RECLAMATION FACILITY
LOWER FOUNTAIN METROPOLITAN SEWAGE DISPOSAL DISTRICT

DRAWN: SKC
DESIGNED: MAM
CHECKED: RJS
DATE: SEPTEMBER 2012
PROJECT NO.: 20166.382
GMS FILE NO.: 2599

GMS, INC.
CONSULTING ENGINEERS
611 N. WEBER, SUITE 300
COLORADO SPRINGS, COLORADO 80903

SHEET **BH-7** OF -