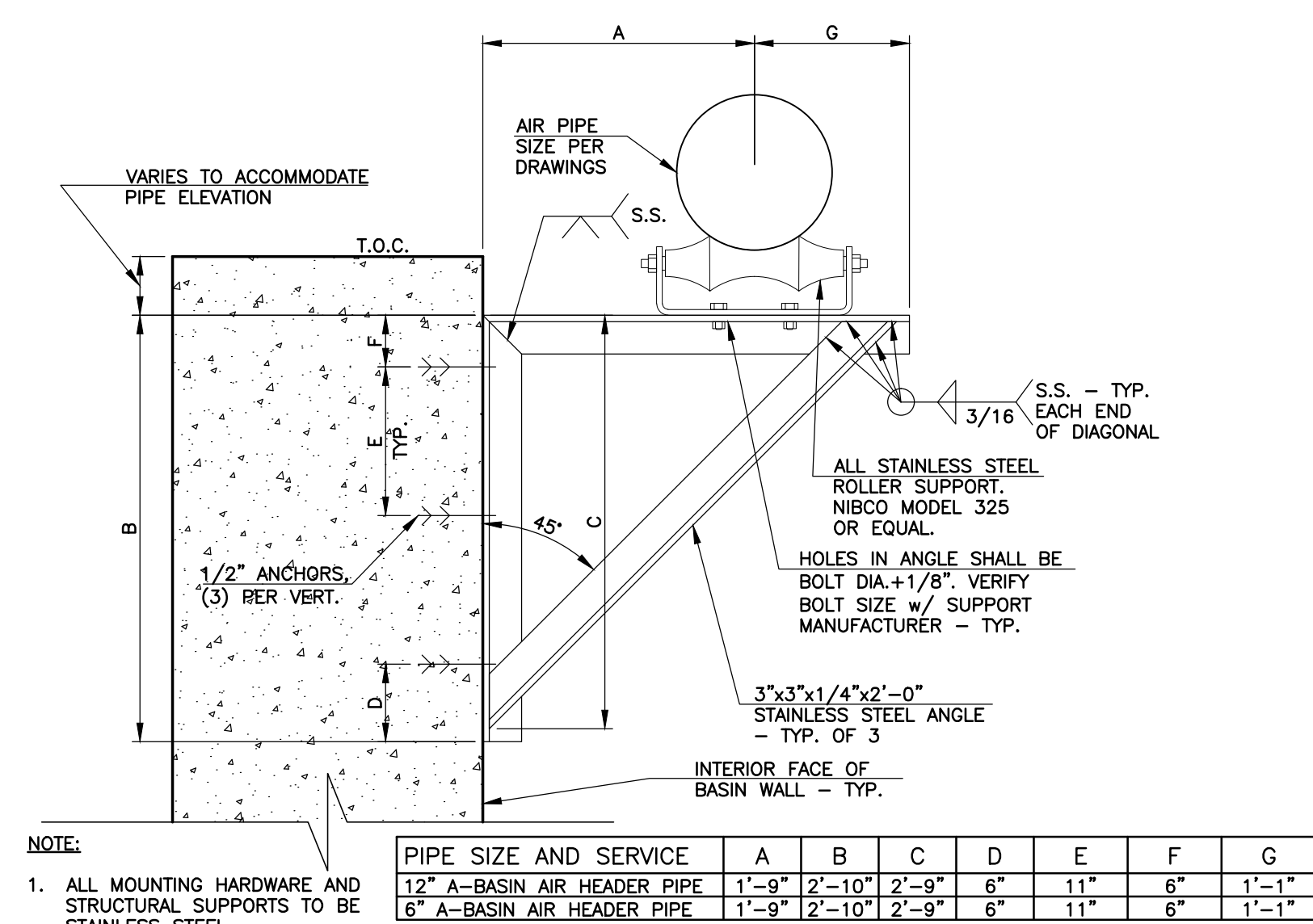
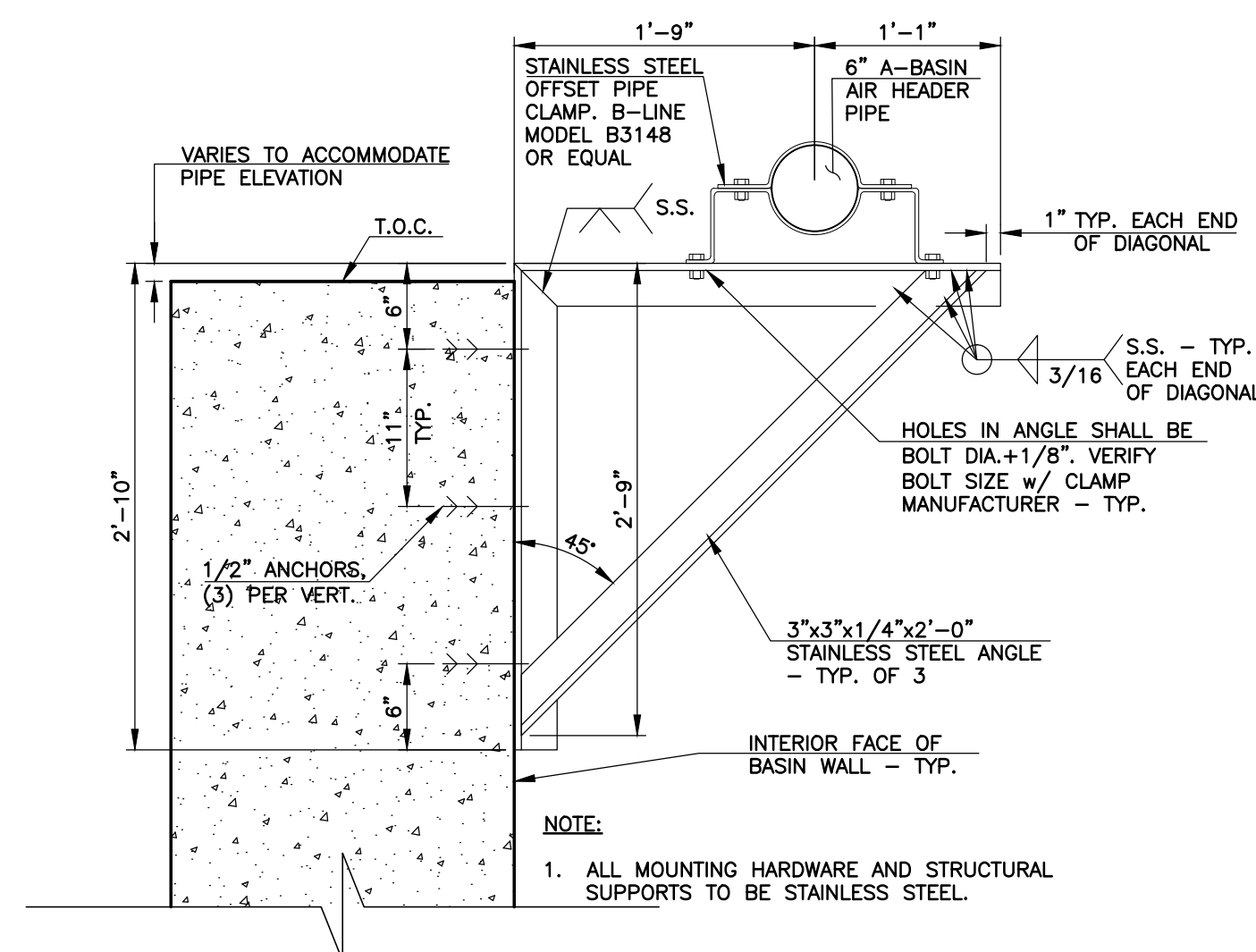


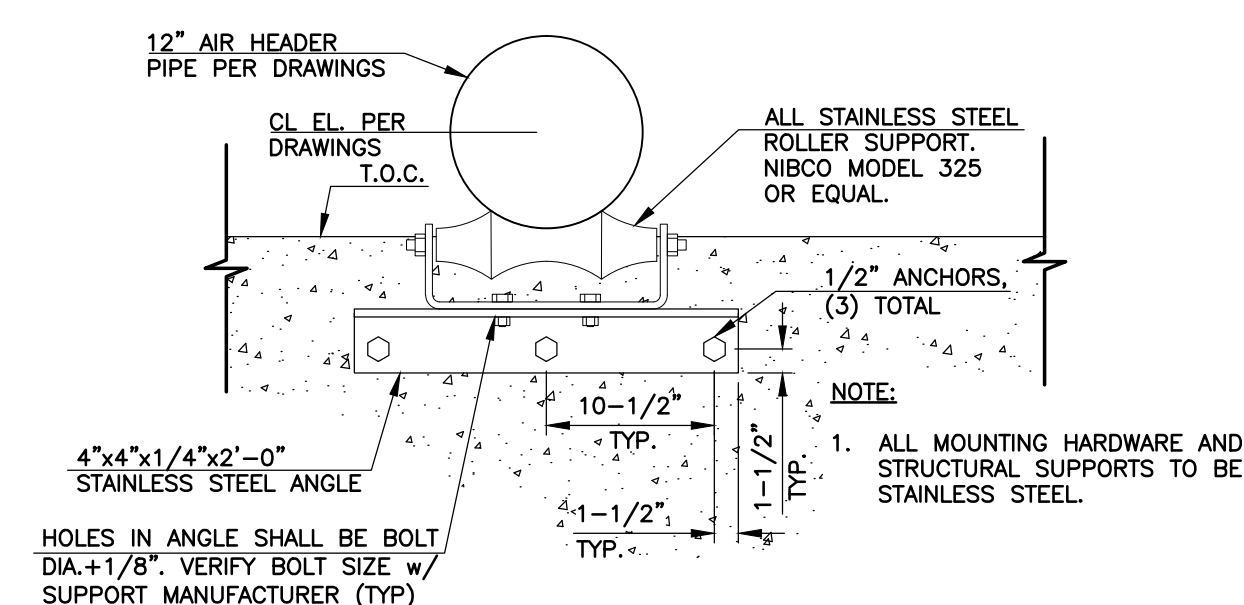
1 BRACKET TYPE FIXED PIPE SUPPORT
DL-7 SCALE: 1" = 1'-0"



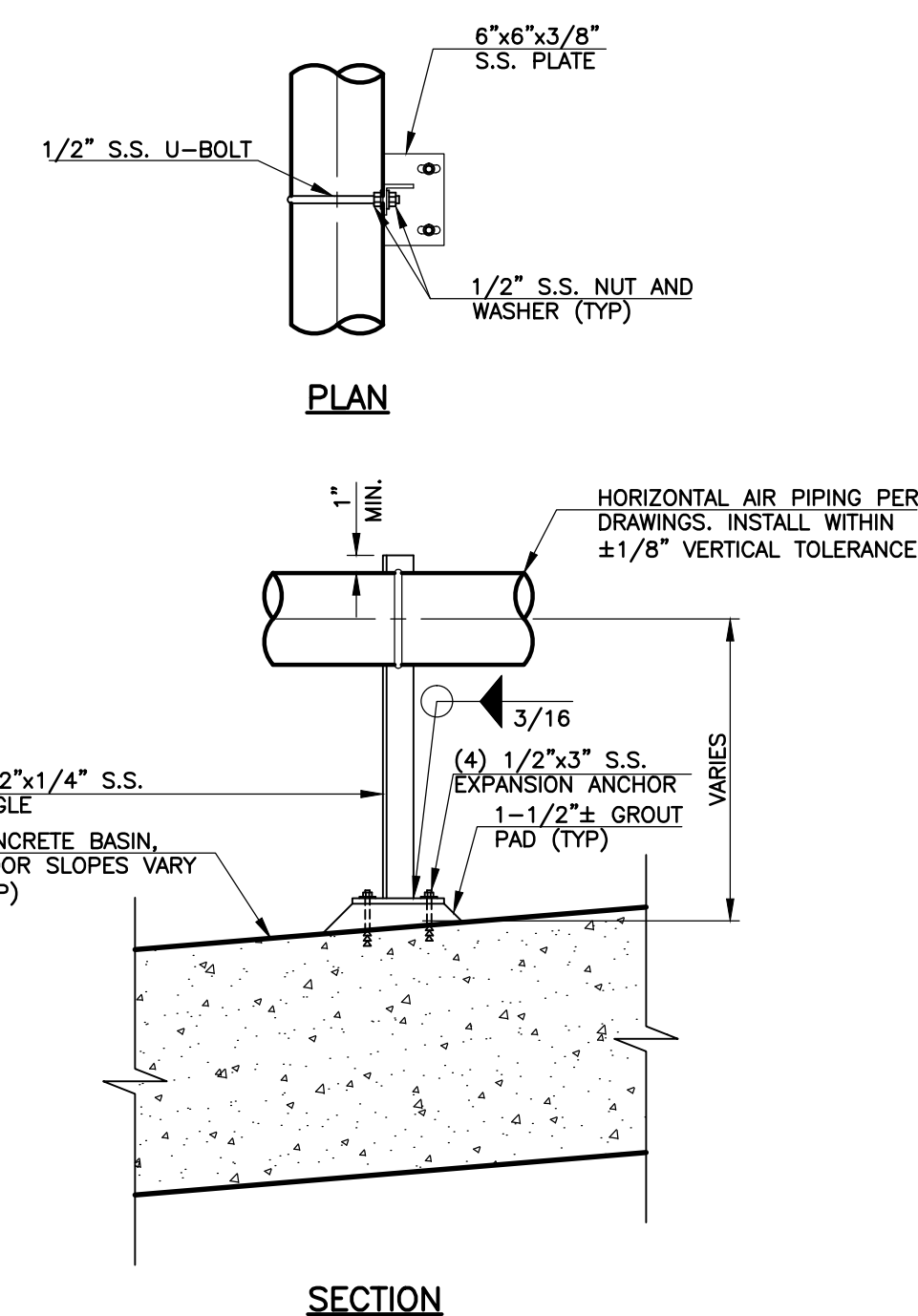
2 BRACKET TYPE ROLLER PIPE SUPPORT
DL-7 SCALE: 1" = 1'-0"



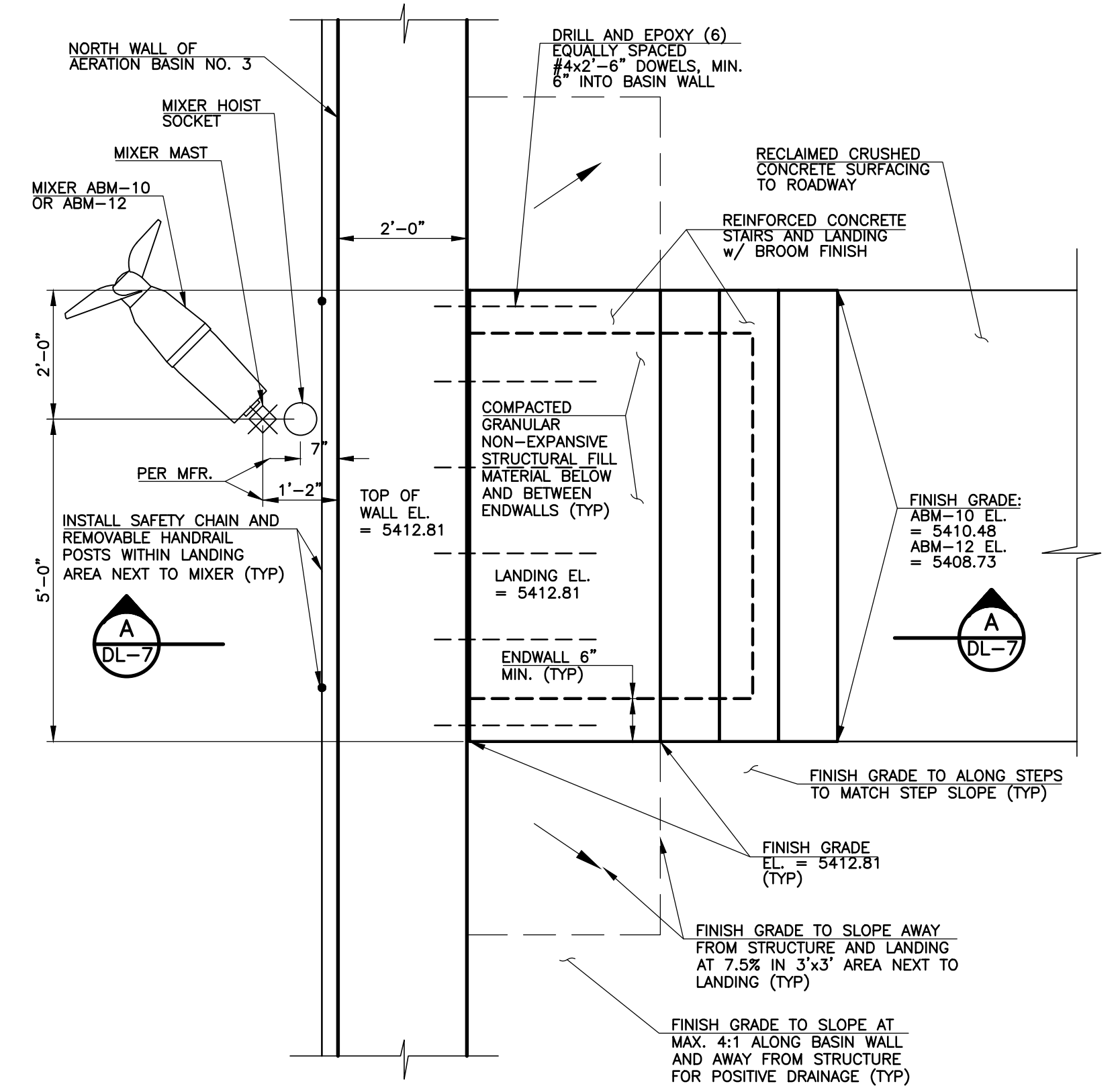
3 BRACKET TYPE FIXED PIPE SUPPORT
DL-7 SCALE: 1" = 1'-0"



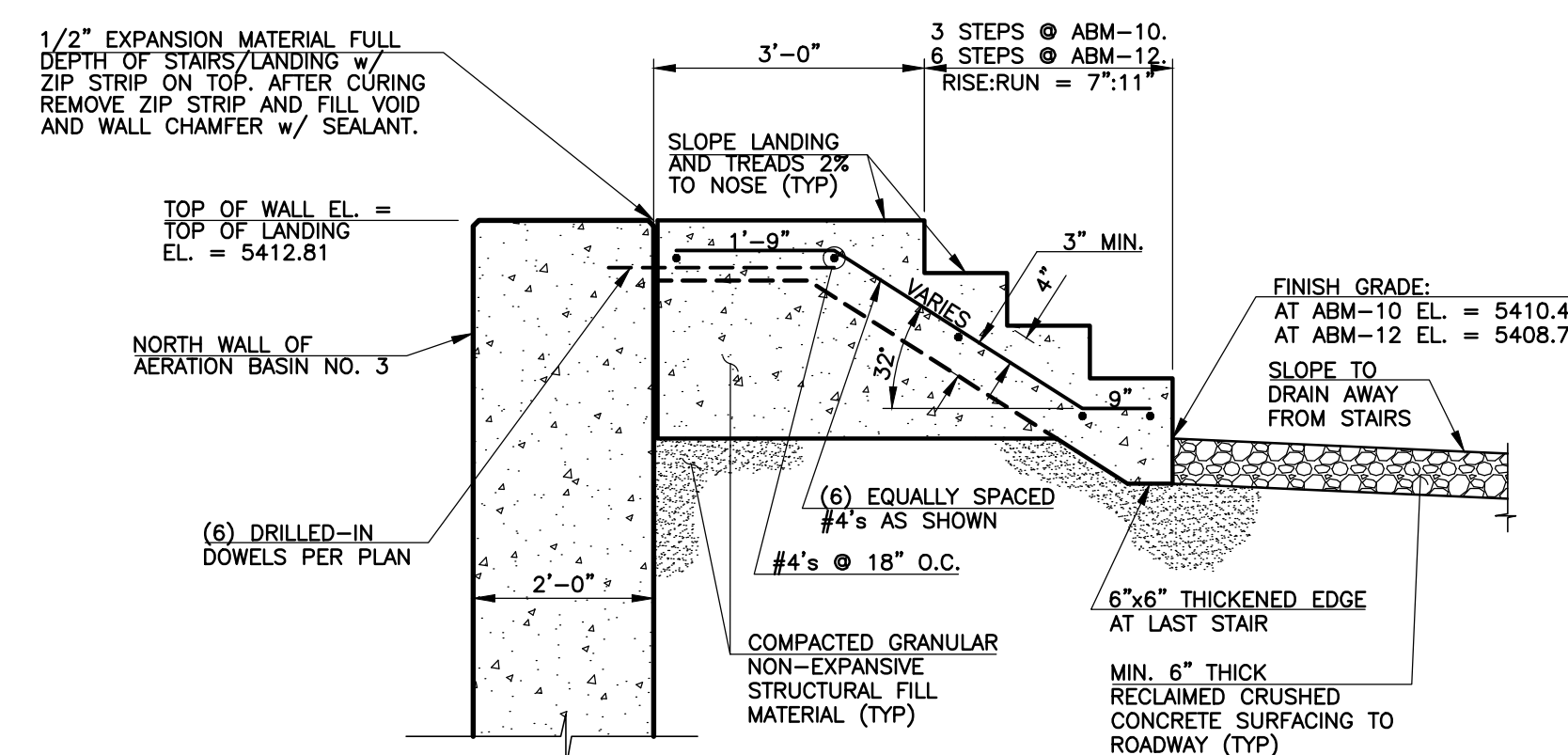
4 FLUSH MOUNTED ROLLER PIPE SUPPORT
DL-7 SCALE: 1" = 1'-0"



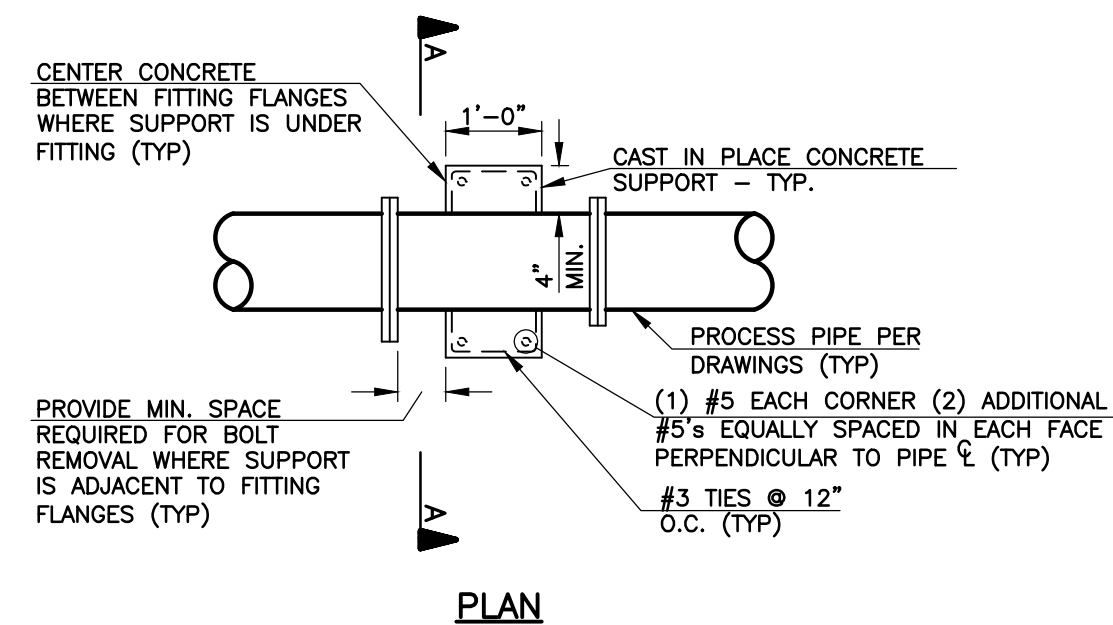
5 PIPE SUPPORT DETAIL
DL-7 SCALE: 1" = 1'-0"



7 MIXER LANDING DETAIL
DL-7 SCALE: 1/2" = 1'-0"



A MIXER LANDING SECTION
DL-7 SCALE: 1/2" = 1'-0"



NOTE:

1. MAXIMUM SPACING BETWEEN SUPPORTS SHALL BE 15 FEET UNLESS OTHERWISE NOTED.

6 CONCRETE PIPE SUPPORT
DL-7 SCALE: 1/2" = 1'-0"

REVISIONS		
NO.	DATE	DESCRIPTION
1	07/19/2012	ISSUED FOR AERATION SYSTEM PROPOSAL & VALUE ENGINEERING
2	12/12/2012	ISSUED FOR ELECTRICAL PERMIT SUBMITTAL TO PPRBD (AERATION BASINS)
3	01/07/2013	ISSUED FOR BUILDING PERMIT SUBMITTAL TO PPRBD (BIOSOLIDS HANDLING COMPLEX)
4	01/29/2013	ISSUED FOR CONSTRUCTION PER PPRBD PERMIT #H64746 (AERATION BASINS)

THIS DRAWING IS THE PROPERTY OF GMS, INC., AND IS NOT TO BE REPRODUCED, MODIFIED OR USED FOR ANY OTHER PROJECT OR EXTENSION OF THIS PROJECT EXCEPT BY AGREEMENT WITH THIS COMPANY.

DETAILS AND SECTIONS
HAROLD D. THOMPSON REGIONAL WATER RECLAMATION FACILITY
LOWER FOUNTAIN METROPOLITAN SEWAGE DISPOSAL DISTRICT

DRAWN: SKC
DESIGNED: MAM
CHECKED: RJS
DATE: JUNE 2012
PROJECT NO.: 20166.510
GMS FILE NO.: 2599

GMS, INC.
CONSULTING ENGINEERS
611 N. WEBER, SUITE 300
COLORADO SPRINGS, COLORADO 80903

SHEET
DL-7
OF
—

XREF FILENAME: G:\BASE.DWG: G:\PLOT STYLE FILE: 1000.ctb
FILENAME: G:\FMSDD\20166\510\DL7\DL7.DWG

© 2012 GMS, INC.