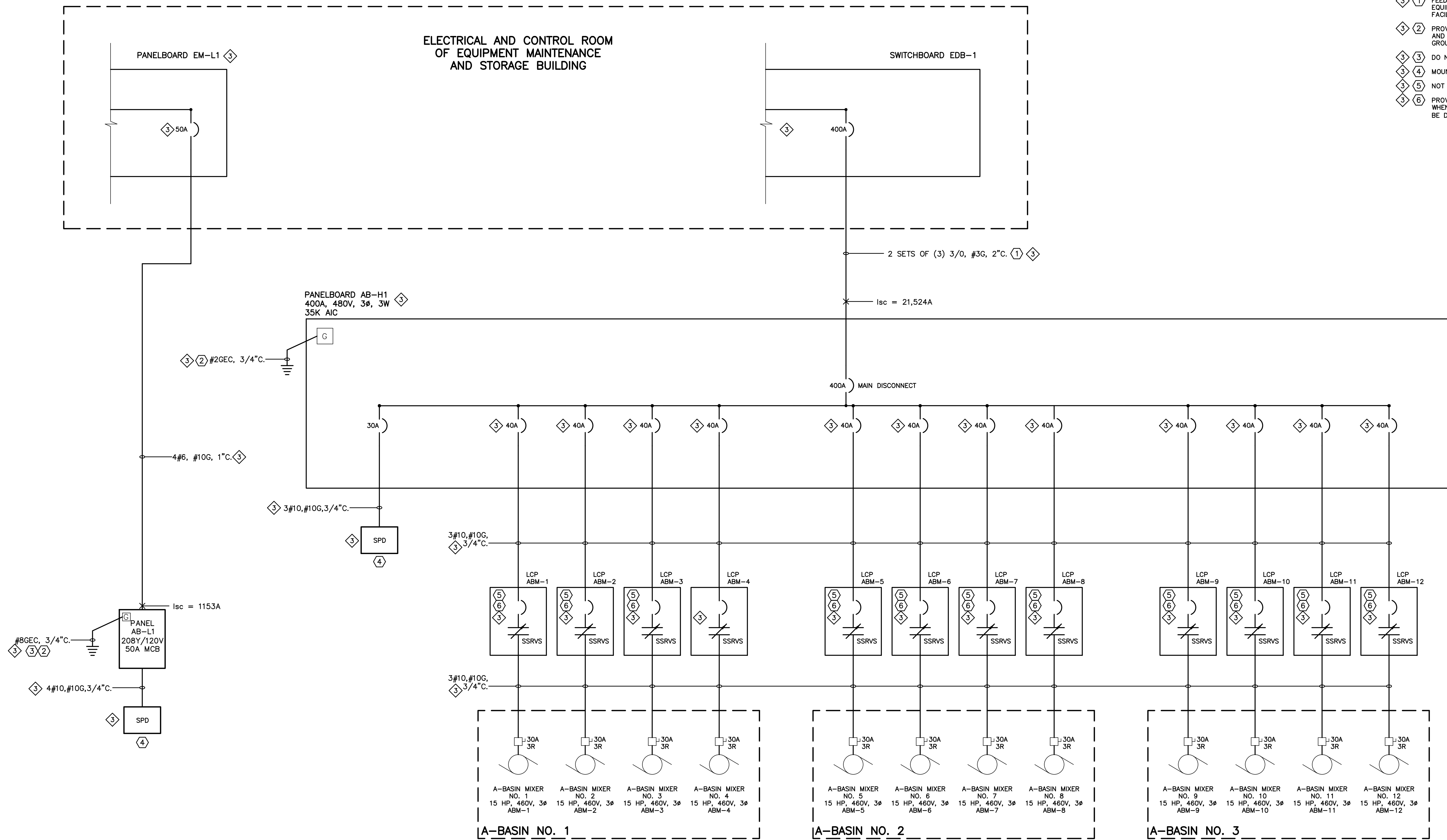


◇ GENERAL NOTES

A. ALL CIRCUIT BREAKERS/DISCONNECT SWITCHES ARE 3 POLE, UNO.

◇ KEYED NOTES

- ◇ 1 FEEDERS FROM EQUIPMENT IN ELECTRICAL EQUIPMENT ROOM OF THE EQUIPMENT MAINTENANCE AND STORAGE BUILDING. SEE SHEET ED-1 FOR FACILITY OVERALL ONE-LINE DIAGRAM.
- ◇ 2 PROVIDE GEC CONNECTION TO PREVIOUSLY INSTALLED BASIN GROUND RING AND UFER GROUND CONDUCTOR. SEE SHEET EAB-1 FOR AERATION BASIN GROUNDING PLAN.
- ◇ 3 DO NOT BOND NEUTRAL TO GROUND.
- ◇ 4 MOUNT SPD ENCLOSURES BELOW PANELBOARDS.
- ◇ 5 NOT USED
- ◇ 6 PROVIDE SCADA SYSTEM CONNECTION TO EACH MIXER LCP SUCH THAT WHEN NORMAL POWER IS LOST AND GENERATOR STARTS, THE MIXERS WILL BE DELAYED IN RESTARTING (I.E. 'STEP TWO' FOR THE GENERATOR).



1 AERATION BASINS ELECTRICAL ONE-LINE DIAGRAM
EAB-3 SCALE: NONE

REVISIONS		
NO. ◇	DATE	DESCRIPTION
1	07/25/2012	ISSUED FOR VALUE ENGINEERING
2	10/04/2012	ISSUED FOR VALUE ENGINEERING AND COMMENT
3	12/12/2012	ISSUED FOR BUILDING PERMIT TO PPRBD (AERATION BASINS)
4	01/29/2013	ISSUED FOR CONSTRUCTION PER PPRBD PERMIT #H64748 (AERATION BASINS)

THIS DRAWING IS THE PROPERTY OF GMS, INC., AND IS NOT TO BE REPRODUCED, MODIFIED OR USED FOR ANY OTHER PROJECT OR EXTENSION OF THIS PROJECT EXCEPT BY AGREEMENT WITH THIS COMPANY.

ELECTRICAL ONE-LINE DIAGRAM
AERATION BASINS AND AEROBIC DIGESTER BASINS
HAROLD D. THOMPSON REGIONAL WATER RECLAMATION FACILITY
LOWER FOUNTAIN METROPOLITAN SEWAGE DISPOSAL DISTRICT

DRAWN	MAM
DESIGNED	MAM/MR
CHECKED	MR
DATE	2012
PROJECT NO.	20166.330
GMS FILE NO.	2599

GMS, INC.
CONSULTING ENGINEERS
611 N. WEBER, SUITE 300
COLORADO SPRINGS, COLORADO 80903

SHEET
EAB-3
OF
—

XREF FILENAME: G:\
BASE DWG: G\
PLOT STYLE FILE: 10502.ctb
FILENAME: G:\PMS2012\20166\330\EAB3\EAB3.dwg

G:\PMS2012\20166\330\EAB3\EAB3.dwg, EAB3, 1/20/2013 8:43:27 AM, 45, DWG TO PDF, p01, 1/1