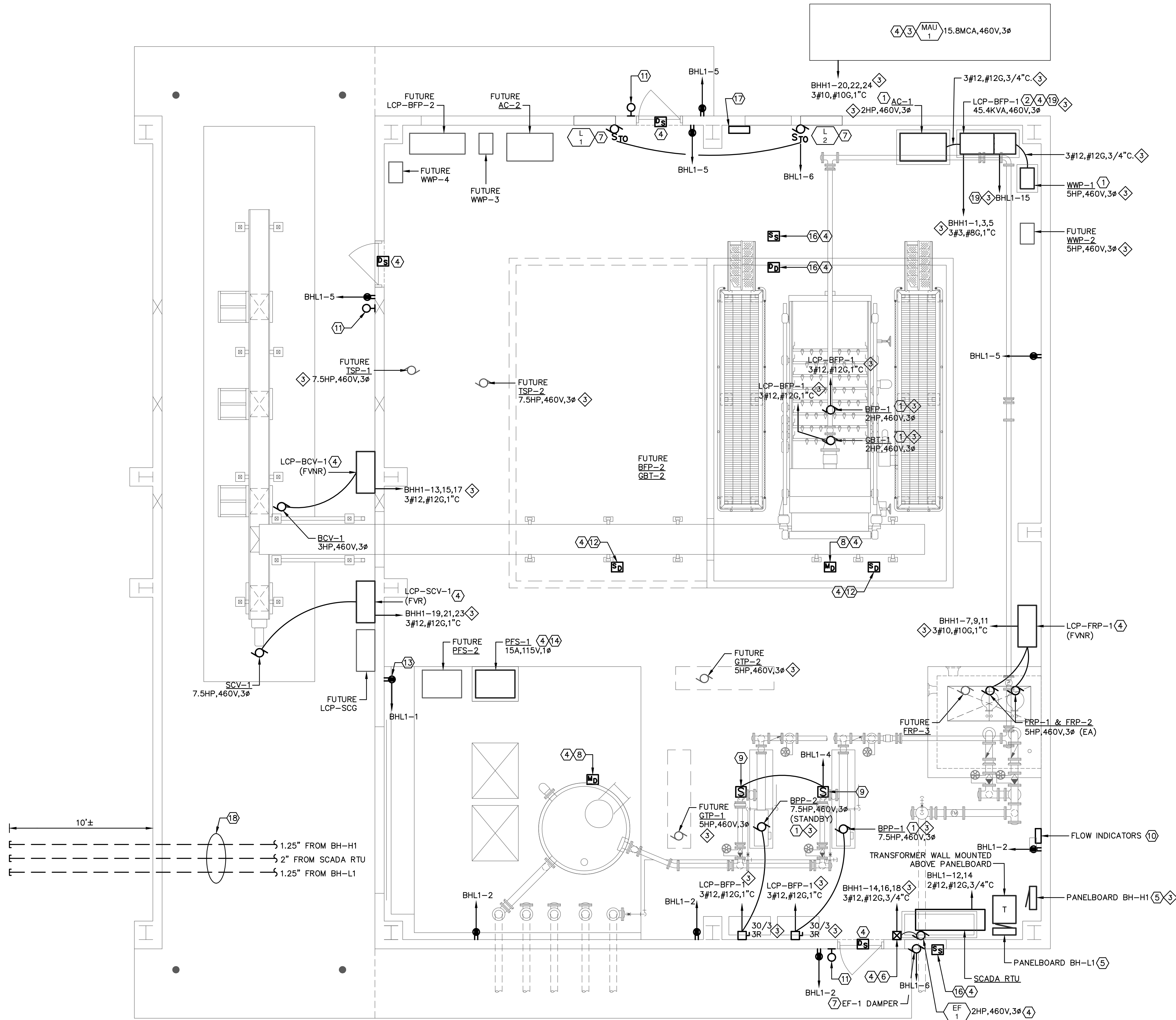


GENERAL NOTES

- A. ALL POWER, CONTROL, AND SIGNALING WIRING SHALL BE RUN IN UNDERSLAB CONDUITS INSOFAR AS PRACTICAL.
- B. UNO, ALL WALL MOUNTED RECEPTACLES SHALL BE WEATHERPROOF WITH HINGED COVERS, MOUNTED 48" AFF. ALL ELECTRICAL DISTRIBUTION EQUIPMENT AND CONTROLS SHALL HAVE NEMA 3R OR BETTER ENCLOSURES. ALL SNAP SWITCHES SHALL BE WATERPROOF TYPE.
- C. SEE MECHANICAL PLANS AND SCHEDULES FOR MECHANICAL SEQUENCE OF OPERATION AND ASSOCIATED ADDITIONAL ELECTRICAL WORK AND SCADA SYSTEM CONNECTION REQUIREMENTS NOT SHOWN ON THIS SHEET.

KEYED NOTES

- ① POWER AND CONTROL FOR THIS EQUIPMENT IS FROM THE LCP-BFP-1 CONTROL PANEL. PROVIDE POWER AND CONTROL CONNECTIONS FROM LCP-BFP-1 PER MANUFACTURER SPECIFICATIONS.
- ③② LOAD SHOWN FOR LCP-BFP-1 INCLUDES BFP-1, GBT-1, WWP-1, AC-1, BFP-2, BFP-3, AND FUTURE EQUIPMENT LOADS WWP-2, GTP-1, GTP-2, PFS-2, TSP-1, AND TSP-2.
- ③ MAU-1 FURNISHED WITH INTEGRAL STARTER AND DISCONNECTING MEANS.
- ④ PROVIDE CONDUIT AND CONNECTION TO SCADA FOR CONTROL AND MONITORING.
- ⑤ MOUNT SPD UNIT FOR BH-H1 BELOW PANEL.
- ⑥ FVNR STARTER PROVIDED WITH EXHAUST FAN.
- ⑦ INTERLOCK LOUVERS AND DAMPER WITH EF-1 AND MAU-1 CONTROLS. SEE MECHANICAL PLANS.
- ⑧ METHANE GAS DETECTOR. MOUNT DETECTOR NEAR ROOF PEAK PER MANUFACTURER'S RECOMMENDATIONS. LOCATE SO UNIT IS ACCESSIBLE BY MAN-LIFT FROM FLOOR LEVEL.
- ⑨ SEAL WATER SOLENOID VALVE. 120V. INTERLOCK WITH PUMP STARTER. PROVIDE ALL EQUIPMENT, POWER AND CONTROLS FOR A "FAIL OPEN" TYPE SOLENOID VALVE.
- ⑩ BPP FLOW INDICATOR (ABOVE) AND FRP FLOW INDICATOR (BELOW). PROVIDE 4-20mA CONNECTION TO SCADA.
- ⑪ ALARM LIGHT CONNECTED TO SCADA.
- ⑫ SMOKE DETECTOR. MOUNT NEAR ROOF PEAK BUT LOCATE UNIT SO IT IS ACCESSIBLE BY MAN-LIFT FROM FLOOR LEVEL.
- ⑬ PROVIDE DUPLEX OUTLET WITH WEATHERPROOF COVER OR JUNCTION BOX FOR DEDICATED POWER FEED TO POLYMER FEED SYSTEM. COORDINATE WITH MANUFACTURER FOR POWER FEED CONNECTION REQUIREMENTS.
- ⑭ MAY REQUIRE POWER AND/OR CONTROL CONNECTION TO LCP-BFP-1, VERIFY REQUIREMENTS WITH EQUIPMENT MANUFACTURER.
- ⑮ SPARE CONDUITS FOR FUTURE BUILDING EXPANSION. RUN FROM INDICATED PANELS TO 10 FEET BEYOND FOUNDATION. PROVIDE PULL CORD AND CAP OFF UNDERGROUND ENDS.
- ⑯ MECHANICAL EQUIPMENT INSTRUMENT. REFER TO MECHANICAL DRAWINGS AND COORDINATE INSTALLATION AS REQUIRED.
- ⑰ CONTROL PANEL FURNISHED BY MECHANICAL FOR MAU-1 AND EF-1 WITH HOA SWITCHES, CONTROLS, AND INTERLOCKS FOR MECHANICAL CONTROLS. SEE MECHANICAL DRAWINGS FOR DESCRIPTION AND SEQUENCE OF OPERATIONS.
- ⑱ CONDUIT STUBS FOR FUTURE BUILDING EXPANSION. CAP ENDS AND MARK WITH T-POST
- ③⑱ CONTROL PANEL LCP-BFP-1 CONSISTS OF ONE 480V MOTOR CONTROL SECTION, AND A SEPARATE 120V CONTROL PANEL SECTION. VERIFY POWER SOURCE FOR 120V CONTROL PANEL SECTION WITH EQUIPMENT PROVIDED.



① ELECTRICAL POWER AND SIGNAL PLAN
SCALE: 1/4" = 1'-0"

REVISIONS		
NO.	DATE	DESCRIPTION
1	11/29/2012	ISSUED FOR VALUE ENGINEERING REVIEW AND PRICING
2	01/07/2013	ISSUED FOR BUILDING PERMIT SUBMITTAL TO PPRBD (BIOSOLIDS HANDLING COMPLEX)
3	01/17/2013	REVISIONS PER DEWATERING EQUIPMENT SUPPLIER'S REVISED PROPOSAL
4	03/14/2013	ISSUED FOR CONSTRUCTION PER PPRBD BLDG PERMIT #65132 (BIOSOLIDS HANDLING COMPLEX)

THIS DRAWING IS THE PROPERTY OF GMS, INC., AND IS NOT TO BE RE-PRODUCED, MODIFIED OR USED FOR ANY OTHER PROJECT OR EXTENSION OF THIS PROJECT EXCEPT BY AGREEMENT WITH THIS COMPANY.

ELECTRICAL POWER AND SIGNAL PLAN
HAROLD D. THOMPSON REGIONAL WATER RECLAMATION FACILITY
LOWER FOUNTAIN METROPOLITAN SEWAGE DISPOSAL DISTRICT

DRAWN: AV
DESIGNED: MAR
CHECKED: MAR
DATE: OCTOBER 2012
PROJECT NO.: 20166.382
GMS FILE NO.: 2599

GMS, INC.
CONSULTING ENGINEERS
611 N. WEBER, SUITE 300
COLORADO SPRINGS, COLORADO 80903

SHEET
EBH-1
OF
—