

GENERAL NOTES

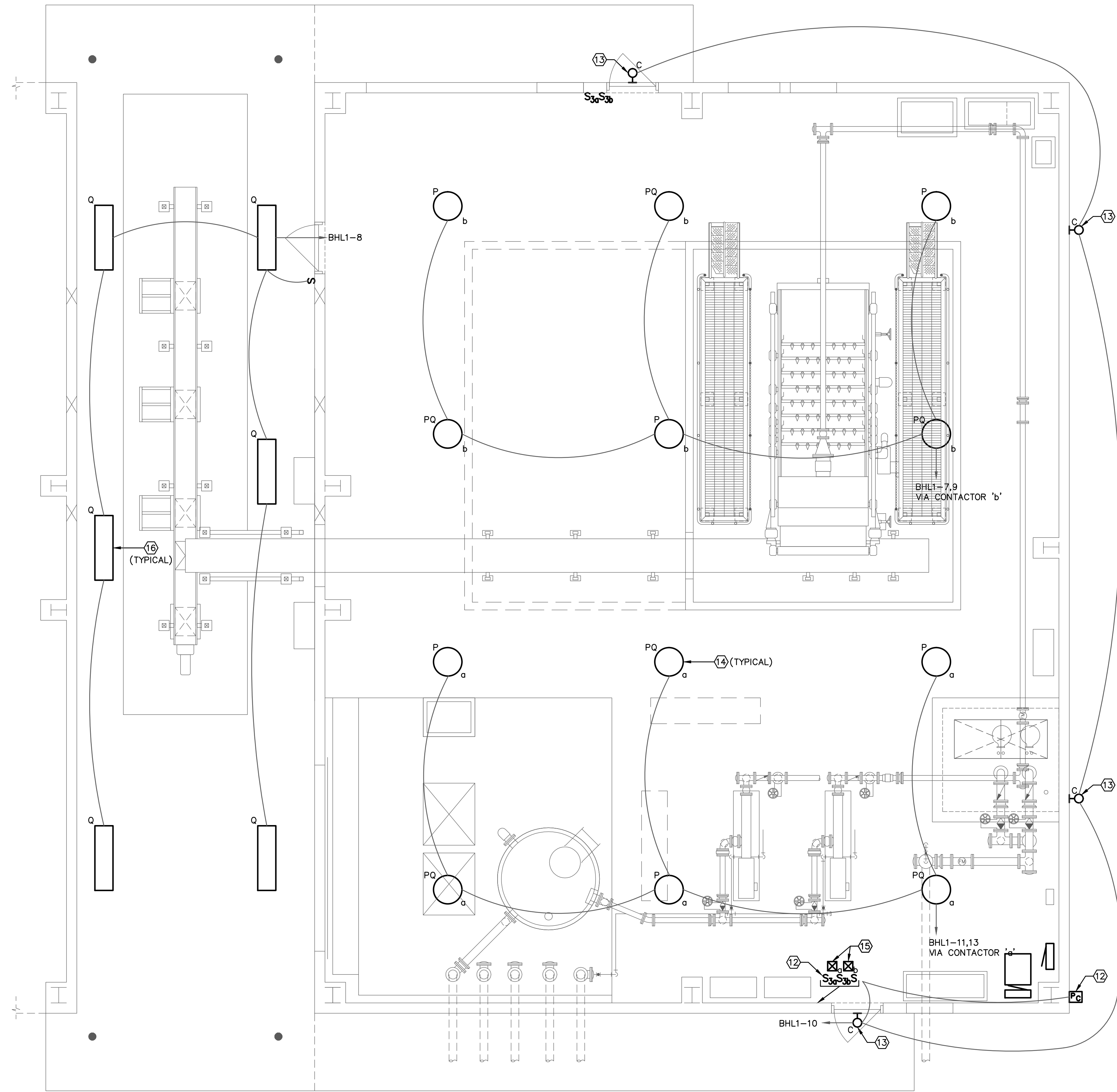
- A. LIGHTNING PROTECTION SYSTEM SHOWN FOR GENERAL INFORMATION ONLY. STRUCTURE TO BE PROVIDED WITH LIGHTNING PROTECTION SYSTEM DESIGNED AND INSTALLED IN ACCORDANCE WITH SPECIFICATION SECTION 13100, NFPA 780 AND UL STANDARD 96A.
- B. ALL LIGHTING SNAP SWITCHES SHALL BE WEATHERPROOF TYPE. CONTACTORS SHALL HAVE NEMA 3R OR BETTER ENCLOSURES.

KEYED NOTES

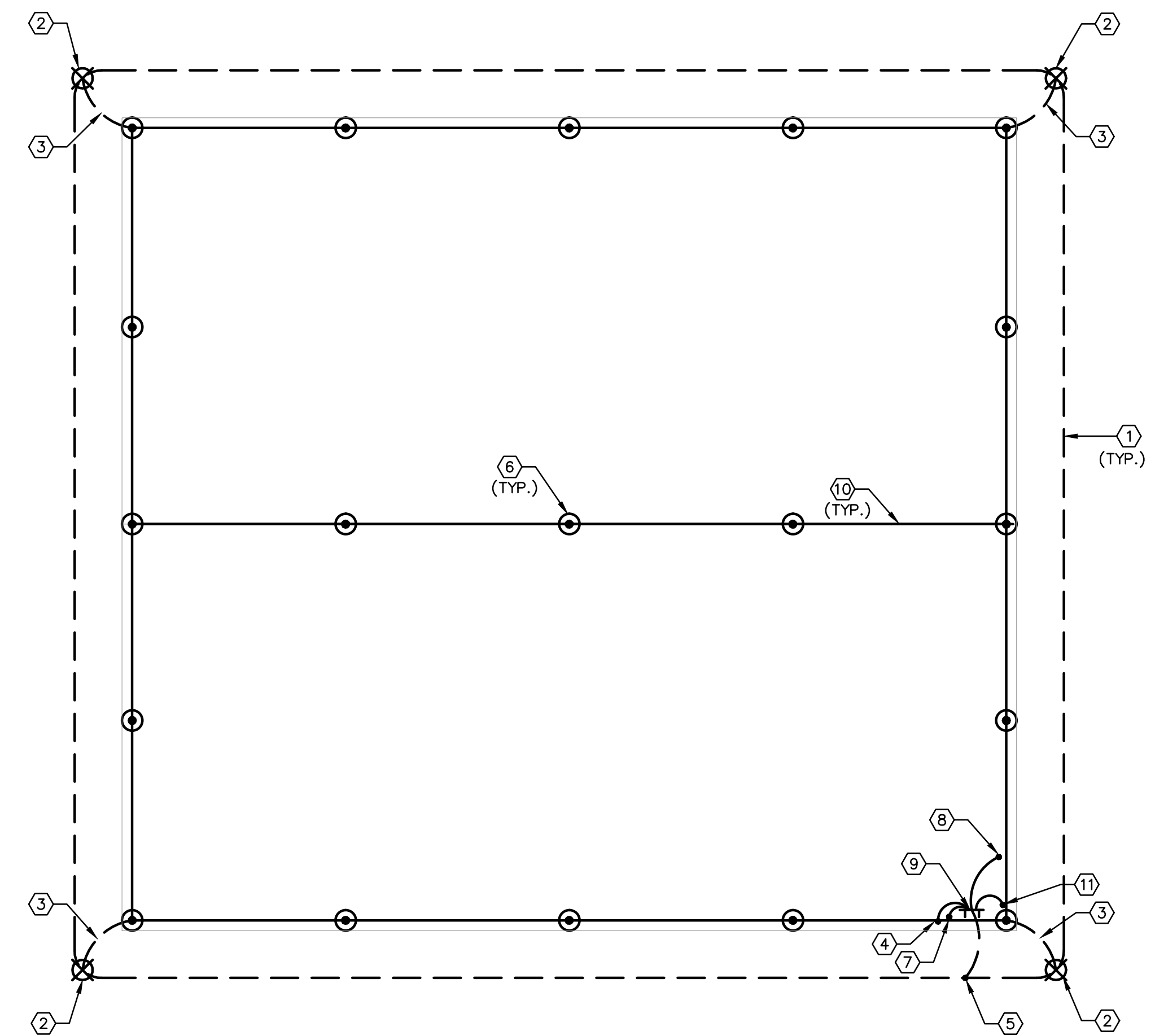
- 1 GROUND RING: COPPER, #4/0 STRANDED, INSTALL AT A MINIMUM DEPTH OF 30 INCHES BELOW FINISHED GROUND SURFACE PER NEC PARAGRAPH 250.53(F). IT IS THE INTENT THAT THE GROUND RING BE PLACED ALL AT ONE TIME DURING BACKFILLING PROCEDURES AND THE INSPECTION OF THE GROUND RING CAN BE ACCOMPLISHED DURING ONE SITE VISIT. THE GROUND RING SHOULD BE PLACED A MINIMUM OF 3 FEET HORIZONTALLY AWAY FROM THE FOUNDATION WALL.
- 2 LOCATIONS FOR 3/4" X 8'-0" GROUND ROD, COPPER OR COPPER CLAD, AT EACH LIGHTNING PROTECTION DOWN CONDUCTOR LOCATION. FINAL DOWN CONDUCTOR LOCATIONS TO BE DETERMINED IN ACCEPTED SHOP SUBMITTAL FOR LIGHTNING PROTECTION SYSTEM.
- 3 LOCATIONS FOR DOWN CONDUCTORS. EXPOSED DOWN CONDUCTORS SHALL HAVE RIGID (GRC OR ACCEPTABLE EQUIVALENT) PROTECTIVE COVERS UP TO 6'-0" ABOVE GRADE WHERE INSTALLED IN CLOSE PROXIMITY TO ROADWAYS.
- 4 LOCATION FOR "JUFER" BOND FOR ENCASED ELECTRODE GROUNDING. RUN INTO FOOTER, TIE TO STEEL REBAR AND PROVIDE MINIMUM 20'-0" LENGTH OF CONDUCTOR WITHIN CONCRETE IN ACCORDANCE WITH NEC AND LOCAL CODES. ROUTE STUB UP TO GROUND BAR.
- 5 APPROXIMATE LOCATION FOR BUILDING GROUNDING ELECTRODE CONDUCTOR CONNECTION TO GROUND RING.
- 6 APPROXIMATE LOCATION OF LIGHTNING PROTECTION AIR TERMINALS ON ROOF. FINAL LOCATION TO BE AS SPECIFIED ON THE SHOP DRAWINGS. DUE TO DISSIMILAR METALS, CONNECT AIR TERMINALS TO COPPER WIRE USING STAINLESS STEEL ALL THREAD.
- 7 APPROXIMATE LOCATION OF WALL MOUNTED TRANSFORMER.
- 8 CONNECTION TO PANEL BH-H1 GROUND BAR.

KEYED NOTES (CONTINUED)

- 9 LOCATE MAIN GROUND BAR BELOW PANEL BH-L1.
- 10 ROOF CONDUCTORS. COORDINATE MOUNTING METHODS AND MATERIALS WITH ROOF INSTALLER. 29 STRANDS 17 GA. COPPER WIRE.
- 11 GROUNDING ELECTRODE CONNECTION TO BUILDING STRUCTURAL STEEL.
- 12 EXTERIOR LIGHTS CONTROLLED BY MANUAL SWITCH AND PHOTOCELL. PHOTOCELL ALLOWS EXTERIOR LIGHTS TO OPERATE BETWEEN DUSK AND DAWN ONLY.
- 13 SEE BUILDING ELEVATIONS FOR TYPE C FIXTURE LOCATIONS.
- 14 PENDANT MOUNT TYPE P, PQ FIXTURES +/-18FT AFF. LOCATIONS SHOWN ARE APPROXIMATE. FINAL LOCATIONS TO BE VERIFIED BY ENGINEER AND OWNER.
- 15 LIGHTING CONTACTORS LOCATED ABOVE SWITCHES.
- 16 PENDANT MOUNT TYPE Q FIXTURES +/- 18FT AFF. FINAL LOCATIONS TO BE VERIFIED BY ENGINEER AND OWNER.



1 ELECTRICAL LIGHTING PLAN
 SCALE: 1/4" = 1'-0"



2 ELECTRICAL LIGHTNING PROTECTION PLAN
 SCALE: 1/8" = 1'-0"

REVISIONS		
NO.	DATE	DESCRIPTION
1	11/29/2012	ISSUED FOR VALUE ENGINEERING REVIEW AND PRICING
2	01/07/2013	ISSUED FOR BUILDING PERMIT SUBMITTAL TO PPRBD (BIOSOLIDS HANDLING COMPLEX)
3	03/14/2013	ISSUED FOR CONSTRUCTION PER PPRBD BLDG PERMIT #65132 (BIOSOLIDS HANDLING COMPLEX)

THIS DRAWING IS THE PROPERTY OF GMS, INC., AND IS NOT TO BE REPRODUCED, MODIFIED OR USED FOR ANY OTHER PROJECT OR EXTENSION OF THIS PROJECT EXCEPT BY AGREEMENT WITH THIS COMPANY.

ELECTRICAL LIGHTING AND LIGHTNING PROTECTION PLAN
 HAROLD D. THOMPSON REGIONAL WATER RECLAMATION FACILITY
 LOWER FOUNTAIN METROPOLITAN SEWAGE DISPOSAL DISTRICT

DRAWN AV
 DESIGNED MAR
 CHECKED MAR
 DATE OCTOBER 2012
 PROJECT NO. 20166.382
 GMS FILE NO. 2599

GMS, INC.
 CONSULTING ENGINEERS
 611 N. WEBER, SUITE 300
 COLORADO SPRINGS, COLORADO 80903

SHEET
EBH-2
 OF
 —

XREF FILENAME: G:\...
 BASE DWG: G:\...
 PLOT STYLE FILE: 1000.ctb
 FILENAME: G:\LFWSD\20166\330\EBH2\EBH2.DWG