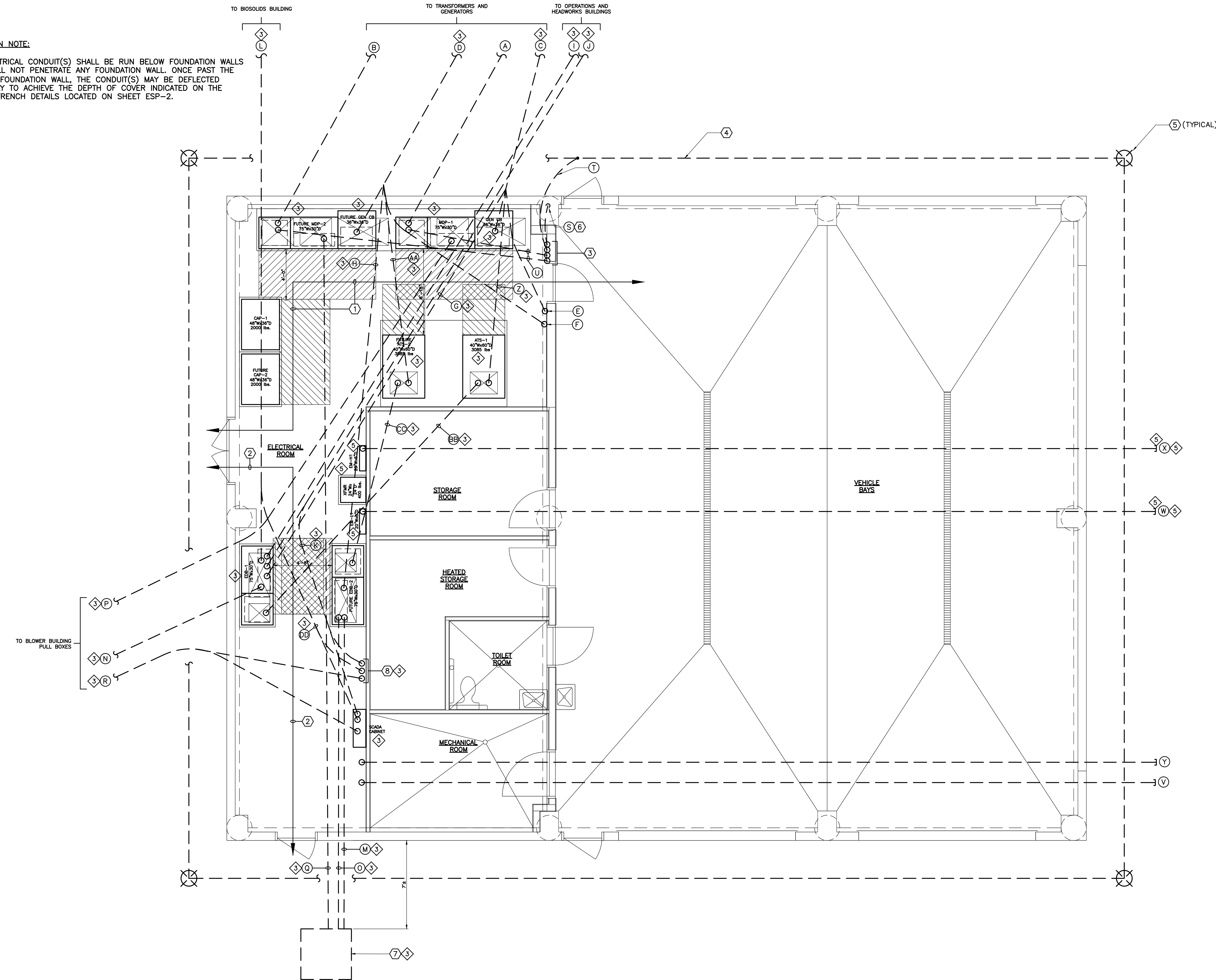


CONSTRUCTION NOTE:  
1. ALL ELECTRICAL CONDUIT(S) SHALL BE RUN BELOW FOUNDATION WALLS AND SHALL NOT PENETRATE ANY FOUNDATION WALL. ONCE PAST THE FACE OF FOUNDATION WALL, THE CONDUIT(S) MAY BE DEFLECTED VERTICALLY TO ACHIEVE THE DEPTH OF COVER INDICATED ON THE TYPICAL TRENCH DETAILS LOCATED ON SHEET ESP-2.



### GENERAL NOTES

- A. LIGHTNING PROTECTION SYSTEM COMPONENTS SHOWN FOR GENERAL INFORMATION ONLY. STRUCTURE TO BE PROVIDED WITH LIGHTNING PROTECTION SYSTEM DESIGNED AND INSTALLED IN ACCORDANCE WITH SPECIFICATION SECTION 13100, NFPA 780 AND UL STANDARD 96A.
- B. PROVIDE PULL CORDS IN ALL RACEWAYS INDICATED AS SPARE OR FOR FUTURE USE.

### KEYED NOTES

1. EGRESS PATHS FROM EACH END OF 3000A SWITCHBOARDS MDP1 AND FUTURE MDP2 PER NEC 110.26(C)(2).
2. EGRESS PATHS FROM EACH END OF 2000A SWITCHBOARDS EDB1 AND FUTURE EDB2 PER NEC 110.26(C)(2).
3. MAIN GROUND BAR LOCATION.
4. GROUND RING: COPPER, #4/0 STRANDED. 30" MINIMUM BELOW FINISHED GRADE.
5. LOCATIONS FOR 3/4" X 8'-0" GROUND ROD, COPPER OR COPPER CLAD, AT EACH LIGHTNING PROTECTION DOWN CONDUCTOR LOCATION. FINAL DOWN CONDUCTOR LOCATIONS TO BE DETERMINED IN ACCEPTED SHOP SUBMITTAL FOR LIGHTNING PROTECTION SYSTEM.
6. LOCATION FOR "UFER" BOND FOR STRUCTURE GROUNDING. RUN INTO DRILLED PIER, TIE TO STEEL REBAR AND PROVIDE MIN. 20'-0" LENGTH CONDUCTOR WITHIN DRILLED PIER CONCRETE IN ACCORDANCE WITH NEC AND LOCAL CODES. ROUTE STUB UP THROUGH SLAB TO GROUND BAR.
7. APPROXIMATE LOCATION FOR HANDHOLE ON EAST SIDE OF BUILDING.
8. LOCATION FOR SPARE COMM CONDUIT STUB-UPS.

### UNDER SLAB CONDUIT SCHEDULE

- A. SERVICE LATERAL: (8) 3.5".
- B. FUTURE SERVICE LATERAL: (8) 3.5".
- C. GENERATOR FEEDER, CONTROL, AND MONITORING SYSTEMS: (6) 3.5" + (1) SPARE 3.5", (1) 1.25", (3) 3/4".
- D. FUTURE GENERATOR FEEDER, CONTROL, AND MONITORING SYSTEMS: (6) 3.5" + (1) SPARE 3.5", (1) 1.25", (3) 3/4".
- E. GENERATOR E-STOP AND REMOTE ANNUNCIATOR: (1) 3/4".
- F. FUTURE GENERATOR E-STOP AND REMOTE ANNUNCIATOR: (1) 3/4".
- G. GENERATOR BLOCK HEATER/ENCLOSURE POWER SUPPLY: (1) 1.25".
- H. FUTURE GENERATOR BLOCK HEATER/ENCLOSURE POWER SUPPLY: (1) 1.25".
- I. HEADWORKS BUILDING FEEDER: (1) 2".
- J. OPERATIONS BUILDING FEEDER AND SCADA/COMM LINES: (3) 2".
- K. SCADA/COMM LINES TO OPERATIONS BUILDING: (2) 2".
- L. BIOSOLIDS BUILDING FEEDER AND SCADA/COMM LINES: (1) 2.5", (2) 2".
- M. SPARE: (1) 2".
- N. BLOWER BUILDING FEEDER: (4) 2.5" + (1) SPARE 2.5".
- O. FUTURE BLOWER BUILDING FEEDER: (5) 3" + (1) 3" SPARE.
- P. PUMPING AND DISINFECTION BUILDING FEEDER: (3) 2.5" + (1) SPARE 2.5".
- Q. FUTURE PUMPING AND DISINFECTION BUILDING FEEDER: (4) 3" + (1) 3" SPARE.
- R. SCADA/COMM LINES TO PULL BOX AT BLOWER BUILDING: (2) 2".
- S. UFER GROUND: 3/4" C. DOWN TO PIER.
- T. CONDUIT FOR GROUND RING BONDING CONDUCTOR: (1) 3/4".
- U. GROUNDING ELECTRODES FROM MDP1 & FUTURE MDP2 GROUND BUSES: (2) 3/4".
- V. FUTURE PRIMARY CLARIFIER MOTOR FEEDERS: (6) 3/4". CAP OFF APPROX. 5' BEYOND BUILDING.
- W. FUTURE PRIMARY CLARIFIER 120V (RECP) CIRCUITS: (6) 3/4". CAP OFF APPROX. 5' BEYOND BUILDING.
- X. FUTURE PRIMARY CLARIFIER (LTG) CIRCUITS: (1) 3/4". CAP OFF APPROX. 5' BEYOND BUILDING.
- Y. FUTURE PRIMARY CLARIFIER SENSOR LINES: (4) 3/4". CAP OFF APPROX. 5' BEYOND BUILDING.
- Z. GENERATOR CONTROL AND MONITORING: (2) 3/4".
- AA. FUTURE GENERATOR CONTROL AND MONITORING: (2) 3/4".
- BB. ATS-1 TO EDB-1 FEEDER: (6) 3.5"
- CC. FUTURE ATS-2 TO EDB-2 FEEDER: (6) 3.5"
- DD. BIOSOLIDS BUILDING SCADA/COMM LINES: (2) 2".

XREF FILENAME: G:\JMS\201166\415\JMS\EM6  
BASE DWG: G:\JMS\201166\415\JMS\EM6  
PLOT STYLE FILE: 10000.ctb  
FILENAME: G:\JMS\201166\330\JMS\JMS1.DWG

REVISIONS		
NO.	DATE	DESCRIPTION
1	07/28/2011	ISSUED FOR FOUNDATION PERMIT SUBMITTAL TO PPRBD (EQUIP., MAINT. AND STO. BLDG.)
2	08/24/2011	ISSUED FOR CONSTRUCTION PER PPRBD FDTN PERMIT #H93002 (EQUIP., MAINT. AND STO. BLDG.)
3	10/17/2011	ESI NO. 013
4	11/23/2011	ISSUED FOR BUILDING PERMIT SUBMITTAL TO PPRBD (EQUIP., MAINT. & STO. BLDG.)
5	01/09/2012	ISSUED FOR CONSTRUCTION PER PPRBD BUILDING PERMIT #H93002 (EQUIP., MAINT. & STO. BLDG.)

THIS DRAWING IS THE PROPERTY OF GMS, INC., AND IS NOT TO BE RE-PRODUCED, MODIFIED OR USED FOR ANY OTHER PROJECT OR EXTENSION OF THIS PROJECT EXCEPT BY AGREEMENT WITH THIS COMPANY.

© 2011 GMS, INC.

FOUNDATION ELECTRICAL PLAN  
HAROLD D. THOMPSON REGIONAL WATER RECLAMATION FACILITY  
LOWER FOUNTAIN METROPOLITAN SEWAGE DISPOSAL DISTRICT

DRAWN SKC  
DESIGNED MFR  
CHECKED MFR  
DATE JULY 2011  
PROJECT NO. 20166.330  
GMS FILE NO. 2599

GMS, INC.  
CONSULTING ENGINEERS  
611 N. WEBER, SUITE 300  
COLORADO SPRINGS, COLORADO 80903

SHEET  
EEM-1  
OF  
—

1 FOUNDATION ELECTRICAL PLAN  
SCALE: 1/4" = 1'-0"