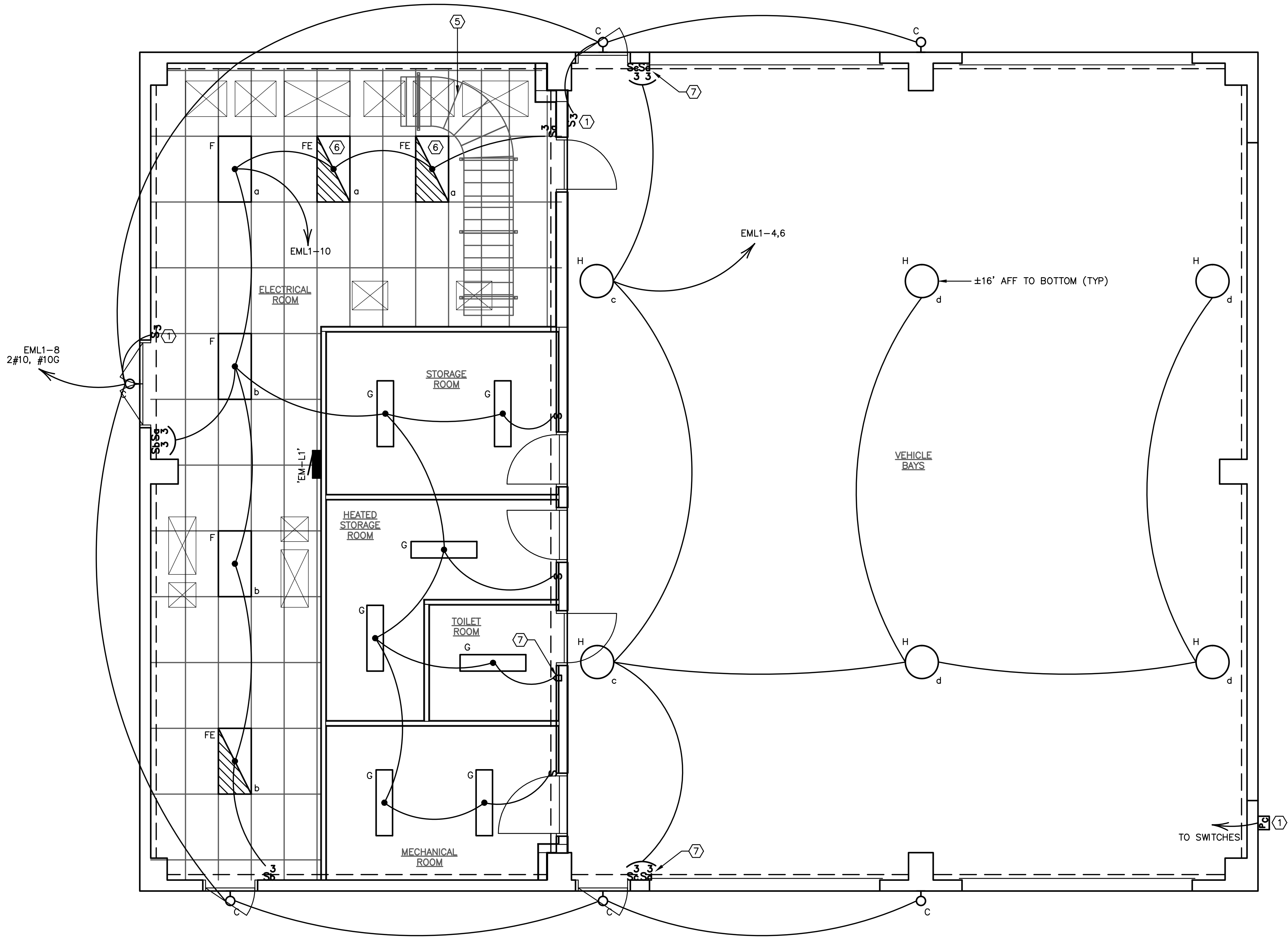


GENERAL NOTES

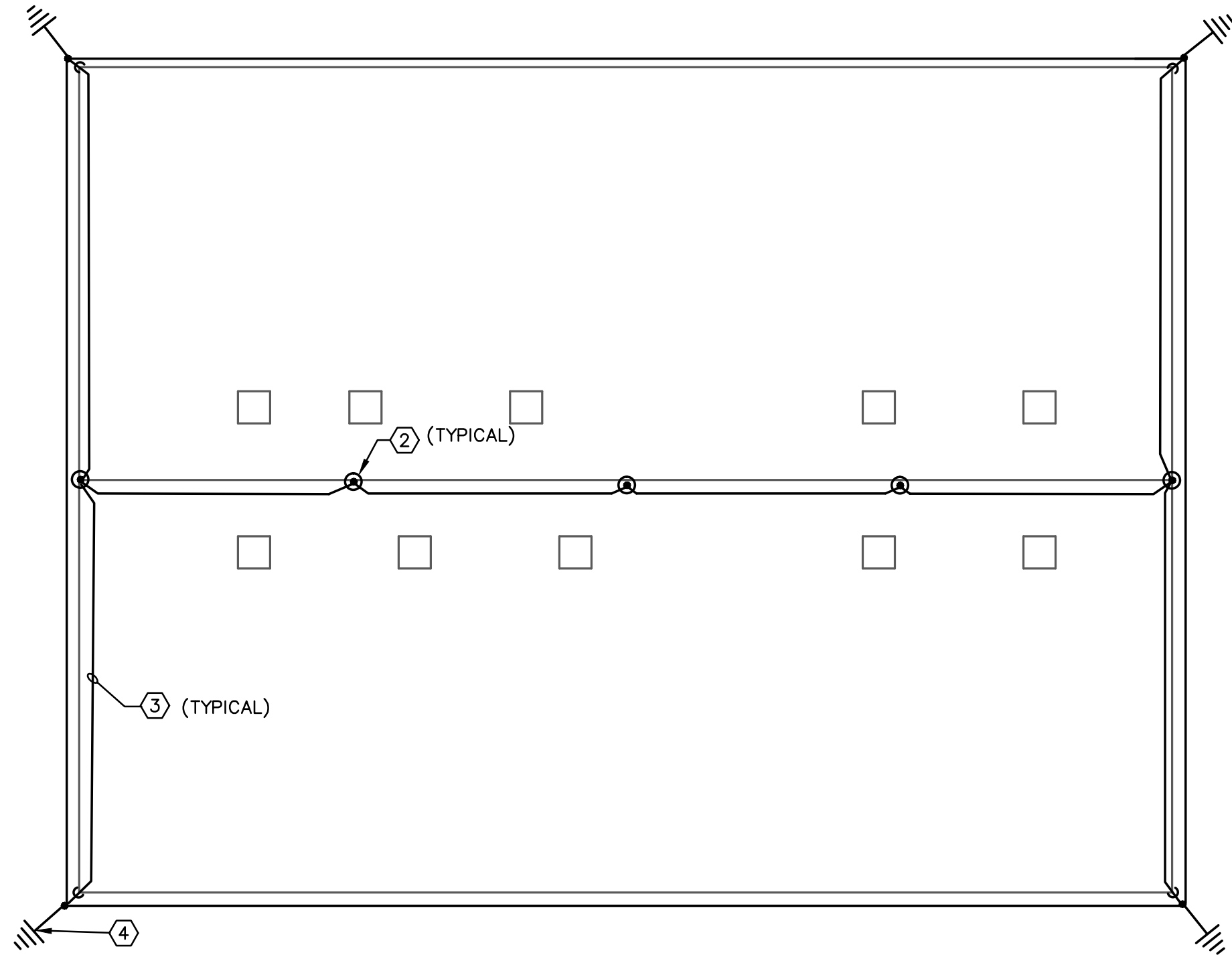
- A. LIGHTNING PROTECTION SYSTEM COMPONENTS SHOWN FOR GENERAL INFORMATION ONLY. STRUCTURE TO BE PROVIDED WITH LIGHTNING PROTECTION SYSTEM DESIGNED AND INSTALLED IN ACCORDANCE WITH SPECIFICATION SECTION 13100. NFPA 780 AND UL STANDARD 96A.
- B. SEE SHEET ES-2 FOR LUMINAIRE SCHEDULE.

KEYED NOTES

- ① EXTERIOR LIGHTS CONTROLLED BY MANUAL SWITCH AND PHOTOCELL. PHOTOCELL ALLOWS EXTERIOR LIGHTS TO OPERATE BETWEEN DUSK AND DAWN ONLY.
- ② APPROXIMATE LOCATION OF LIGHTNING PROTECTION AIR TERMINALS ON ROOF. FINAL LOCATION TO BE AS SPECIFIED ON THE SHOP DRAWINGS.
- ③ ROUTE LIGHTNING PROTECTION ROOF CONDUCTORS BETWEEN AIR TERMINALS AND TO DOWNLEAD CONDUCTOR LOCATIONS.
- ④ APPROXIMATE LOCATION OF DRIVEN GROUND ROD, REFER TO FOUNDATION PACKAGE FOR ADDITIONAL INFORMATION.
- ⑤ APPROXIMATE LOCATION FOR CABLE TRAY. COORDINATE LIGHTING FIXTURE LOCATIONS TO AVOID CONFLICT.
- ⑥ FIXTURES NEAR MAIN DISTRIBUTION EQUIPMENT AND TRANSFER SWITCH FURNISHED WITH 90 MINUTE EMERGENCY BATTERY BACKUP PER NFPA 110. CONNECT BATTERY PACKS AHEAD OF SWITCHING.
- ⑦ TWO-POLE SWITCHES FOR 208V TYPE H FIXTURES.
- ⑧ INTERLOCK TOILET ROOM EXHAUST FAN WITH SWITCH. SEE EEM2 AND MECH DRAWINGS.



1 ELECTRICAL LIGHTING PLAN  
SCALE: 1/4" = 1'-0"



A LIGHTNING PROTECTION PLAN  
SCALE: 1/8" = 1'-0"

REVISIONS		
NO.	DATE	DESCRIPTION
1	10/28/2011	ISSUED FOR DESIGN TEAM MEETING
2	11/23/2011	ISSUED FOR BUILDING PERMIT SUBMITTAL TO PPRBD (EQUIP. MAINT. & STOR. BLDG.)
3	01/09/2012	ISSUED FOR CONSTRUCTION PER PPRBD BUILDING PERMIT #H3302 (EQUIP. MAINT. & STO. BLDG.)

THIS DRAWING IS THE PROPERTY OF GMS, INC., AND IS NOT TO BE RE-PRODUCED, MODIFIED OR USED FOR ANY OTHER PROJECT OR EXTENSION OF THIS PROJECT EXCEPT BY AGREEMENT WITH THIS COMPANY.

ELECTRICAL LIGHTING AND LIGHTNING PROTECTION PLAN  
HAROLD D. THOMPSON REGIONAL WATER RECLAMATION FACILITY  
LOWER FOUNTAIN METROPOLITAN SEWAGE DISPOSAL DISTRICT

DRAWN MAR  
DESIGNED MAR  
CHECKED MAR  
DATE OCT 2011  
PROJECT NO. 20166.415  
GMS FILE NO. 2599

GMS, INC.  
CONSULTING ENGINEERS  
611 N. WEBER, SUITE 300  
COLORADO SPRINGS, COLORADO 80903

SHEET  
EEM-3  
OF  
—

XREF FILENAME: G:\LIMSDD\20166\415\EM3\EM6  
BASE DWG: G:\LIMSDD\20166\415\EM3\EM6  
PLOT STYLE FILE: 1000.ctb  
FILENAME: G:\LIMSDD\20166\330\EEM3\EEM3.DWG