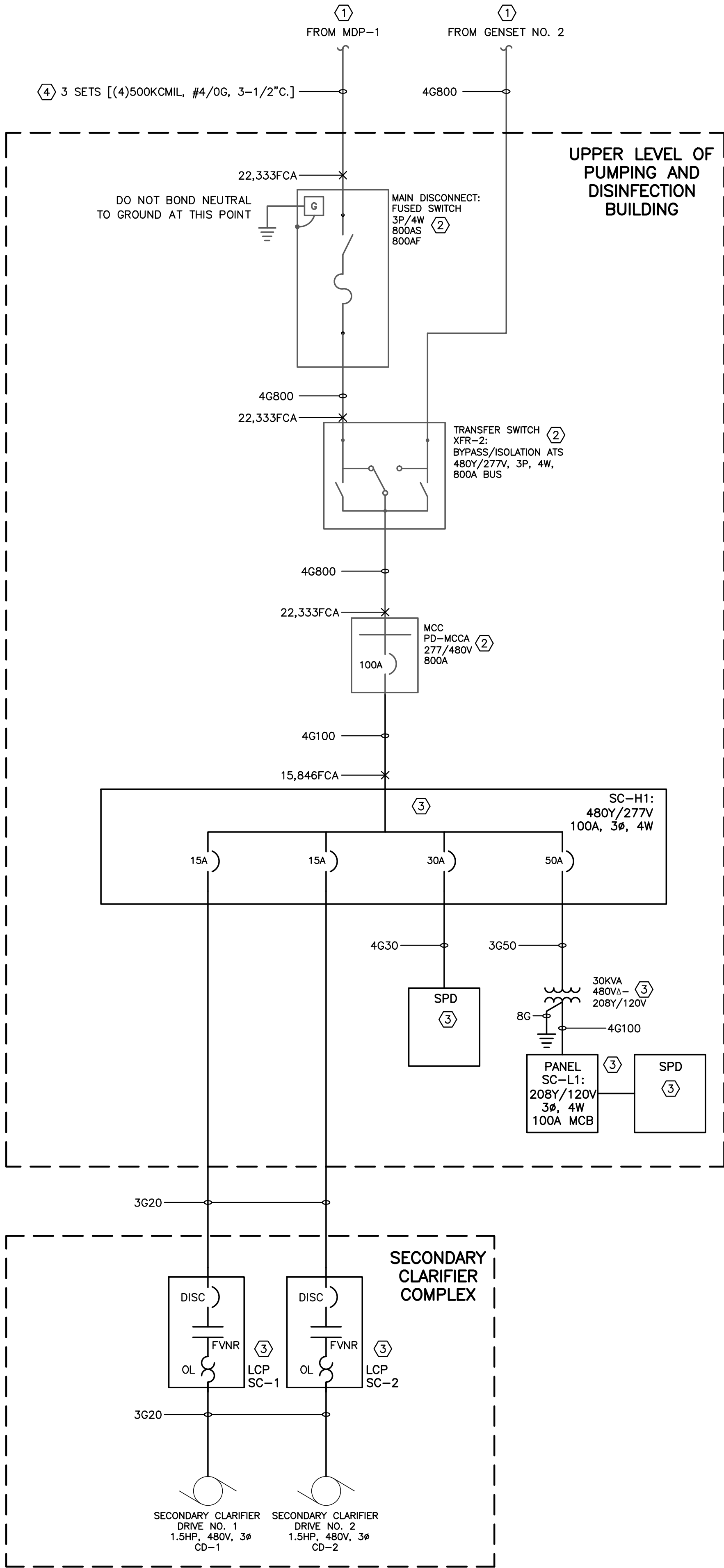


GENERAL NOTES

- A. ALL CIRCUIT BREAKERS/DISCONNECT SWITCHES ARE 3 POLE, UNO.
- B. REFER TO FEEDER SCHEDULE ON SHEET ED-1 FOR CONDUCTOR AND CONDUIT SIZES FOR INDICATED FEEDER TYPES.

KEYED NOTES

- ① SEE SHEET ED-1 FOR CONTINUATION.
- ② THIS EQUIPMENT SHOWN FOR REFERENCE ONLY, AND WILL BE PERMITTED AS PART OF THE PUMPING AND DISINFECTION BUILDING PERMIT SUBMITTAL AT A LATER DATE.
- ③ THIS EQUIPMENT IS BEING SUBMITTED AS PART OF THE SECONDARY CLARIFIER COMPLEX PERMIT SUBMITTAL.
- ④ CONDUCTORS UPSIZED TO REDUCE VOLTAGE DROP.



1 ELECTRICAL ONE-LINE DIAGRAM
ESC-1 SCALE: NONE

REVISIONS		
NO.	DATE	DESCRIPTION
1	03/30/2011	ISSUED FOR BUILDING PERMIT SUBMITTAL TO PPBDO (SECONDARY CLARIFIER COMPLEX)
2	06/10/2011	ISSUED FOR CONSTRUCTION (SECONDARY CLARIFIER COMPLEX)

THIS DRAWING IS THE PROPERTY OF GMS, INC., AND IS NOT TO BE RE-PRODUCED, MODIFIED OR USED FOR ANY OTHER PROJECT OR EXTENSION OF THIS PROJECT EXCEPT BY AGREEMENT WITH THIS COMPANY.

© 2010 GMS, INC.

ELECTRICAL ONE-LINE DIAGRAM
SECONDARY CLARIFIER COMPLEX
HAROLD D. THOMPSON REGIONAL WATER RECLAMATION FACILITY
LOWER FOUNTAIN METROPOLITAN SEWAGE DISPOSAL DISTRICT

DRAWN XXX
DESIGNED XXX
CHECKED XXX
DATE 2010
PROJECT NO. 20166.330
GMS FILE NO. 2599

GMS, INC.
CONSULTING ENGINEERS
611 N. WEBER, SUITE 300
COLORADO SPRINGS, COLORADO 80903

SHEET
ESC-1
OF

XREF FILENAME: G:\
BASE DWG: G\
PLOT STYLE FILE: 10502.ctb
FILENAME: \G:\JFM500\20166\330\ESC1\ESC1.dwg