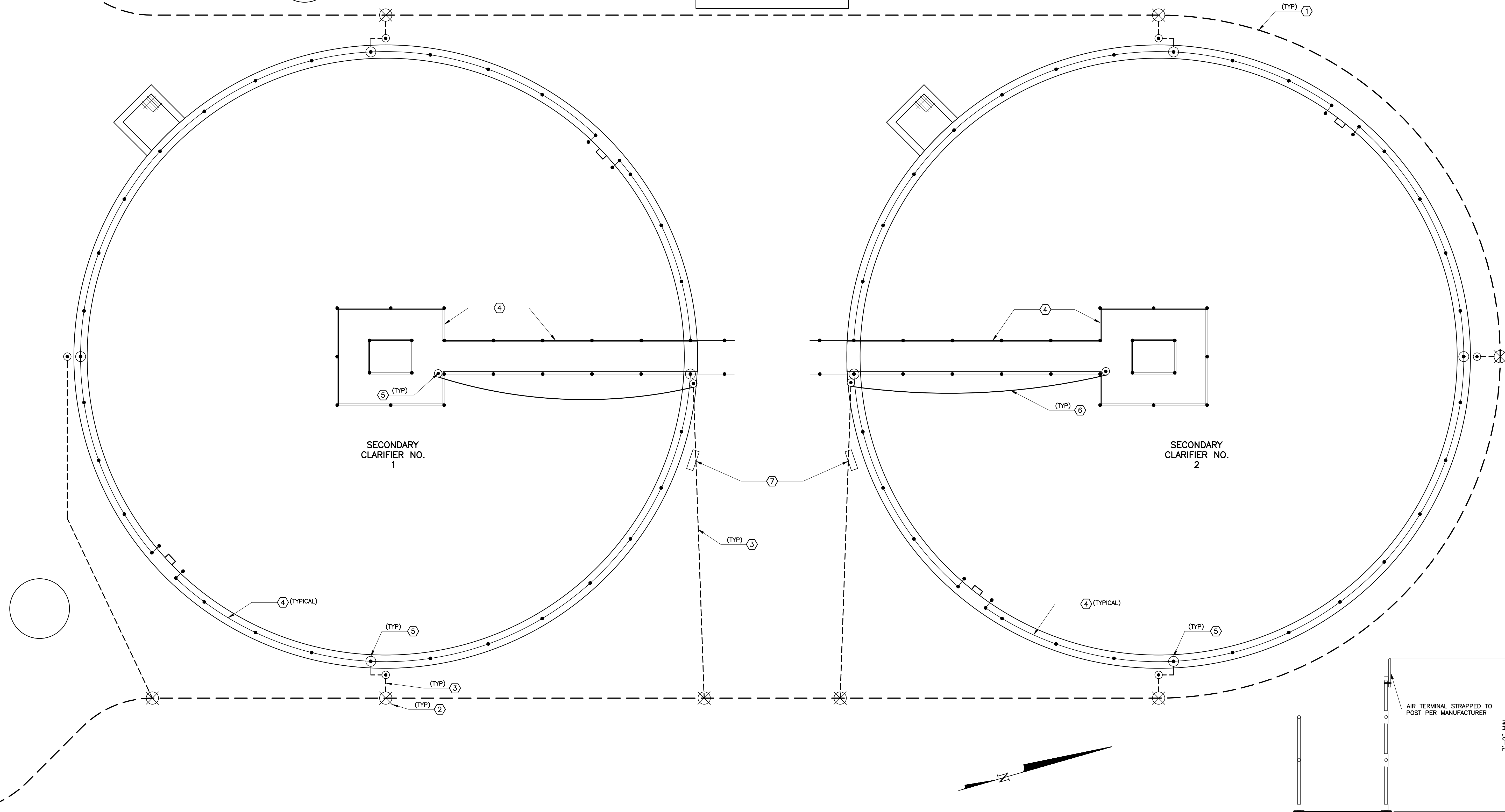


PUMPING AND
DISINFECTION BUILDING



GENERAL NOTES

A. LIGHTNING PROTECTION SYSTEM SHOWN FOR GENERAL INFORMATION ONLY. STRUCTURE TO BE PROVIDED WITH LIGHTNING PROTECTION SYSTEM DESIGNED AND INSTALLED IN ACCORDANCE WITH PROJECT SPECIFICATION.

KEYED NOTES

① GROUND RING: COPPER, #4/0 STRANDED, 18"-24" BELOW FINISHED GRADE. PROVIDE CONTINUOUS RING AROUND SECONDARY CLARIFIERS AND THE PUMPING AND DISINFECTION BUILDING.

② LOCATIONS FOR 3/4" X 8'-0" GROUND ROD, COPPER OR COPPER CLAD, AT EACH LIGHTNING PROTECTION DOWN CONDUCTOR LOCATION. FINAL DOWN CONDUCTOR LOCATIONS TO BE DETERMINED IN ACCEPTED SHOP SUBMITTAL FOR LIGHTNING PROTECTION SYSTEM.

③ LOCATIONS FOR DOWN CONDUCTORS. EXPOSED DOWN CONDUCTORS SHALL HAVE RIGID (GRC OR ACCEPTABLE EQUIVALENT) PROTECTIVE COVERS UP TO 6'-0" ABOVE GRADE.

④ EVERY SECTION OF HAND RAILING, LADDERS, STAIRS, OTHER METALLIC STRUCTURES, AND ALL ELECTRICAL EQUIPMENT ALONG WALKWAYS SHALL BE BONDED WITH THE BRANCH CIRCUIT EQUIPMENT GROUNDS IN ACCORDANCE WITH NEC ARTICLE 682. SEE SHEET ESC-2 FOR PROPOSED BRANCH CIRCUITS. ALL BASIN WALKWAY AREAS SHALL BE CONSIDERED "EQUIPOTENTIAL PLANE" IN ACCORDANCE WITH NEC ARTICLE 682. WHERE EXPOSED, CONCEAL BONDING CONDUCTORS INsofar AS POSSIBLE BY RUNNING ALONG BACK OF HAND RAILS, UNDER WALKWAYS, ETC.

⑤ APPROXIMATE LOCATION OF LIGHTNING PROTECTION AIR TERMINALS. FINAL AIR TERMINAL LOCATIONS TO BE DETERMINED IN ACCEPTED SHOP SUBMITTAL FOR LIGHTNING PROTECTION SYSTEM.

⑥ ROUTE LIGHTNING PROTECTION CONDUCTORS BETWEEN AIR TERMINALS ALONG ACCESS BRIDGE OVER CLARIFIERS.

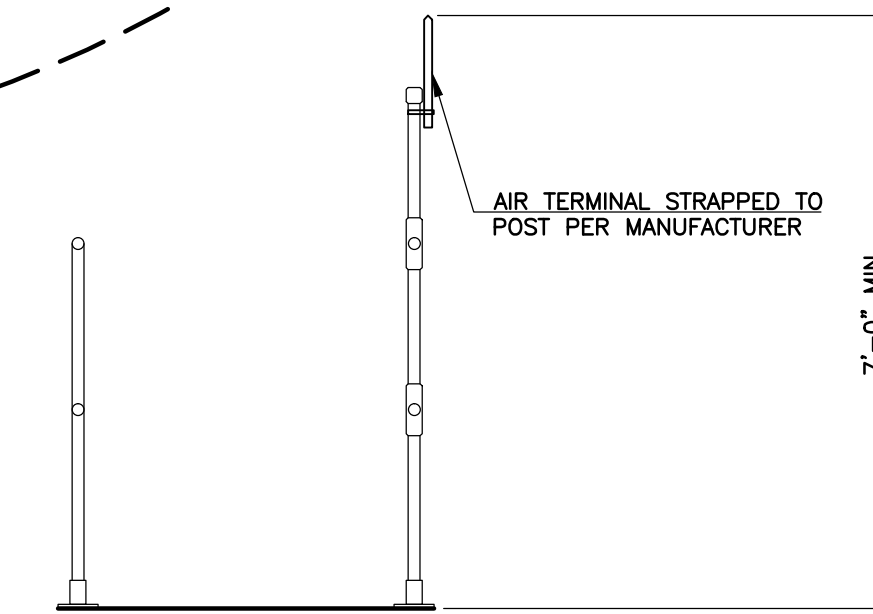
⑦ CLARIFIER EQUIPMENT CONTROL PANEL. SEE LIGHTING AND POWER PLAN.

1 ELECTRICAL GROUNDING PLAN

SCALE: 1" = 5'

1 LIGHTNING PROTECTION AIR TERMINAL DETAIL

SCALE: NONE



REVISIONS		
NO.	DATE	DESCRIPTION
1	03/30/2011	ISSUED FOR BUILDING PERMIT SUBMITTAL TO PPRBD (SECONDARY CLARIFIER COMPLEX)
ISSUED FOR CONSTRUCTION (SECONDARY CLARIFIER COMPLEX)		

THIS DRAWING IS THE PROPERTY OF GMS, INC., AND IS NOT TO BE RE-PRODUCED, MODIFIED OR USED FOR ANY OTHER PROJECT OR EXTENSION OF THIS PROJECT EXCEPT BY AGREEMENT WITH THIS COMPANY.

© 2010 GMS, INC.

ELECTRICAL GROUNDING PLAN SECONDARY CLARIFIER COMPLEX		
HAROLD D. THOMPSON REGIONAL WATER RECLAMATION FACILITY LOWER FOUNTAIN METROPOLITAN SEWAGE DISPOSAL DISTRICT		
DRAWN	XXX	GMS, INC. CONSULTING ENGINEERS 611 N. WEBER, SUITE 300 COLORADO SPRINGS, COLORADO 80903
DESIGNED	XXX	
CHECKED	XXX	
DATE	2010	
PROJECT NO.	20166.330	SHEET ESC-3 OF —
GMS FILE NO.	2599	

XREF: FILENAME: G:\
BASE: DWG: G\
PLOT STYLE FILE: 10502.ctb
FILENAME: \\G:\JFM\SDO\20166\330\ESC3\ESC3.dwg