

CURVE TABLE (C1)				
CURVE NO.	DELTA	RADIUS	LENGTH	DESCRIPTION
C1	16° 47' 07"	200.0'	58.59'	CENTERLINE OF LOWER FOUNTAIN HEIGHTS
C2	66° 44' 41"	50.0'	58.25'	WEST EDGE OF PAVEMENT
C3	67° 06' 07"	50.0'	58.56'	EAST EDGE OF PAVEMENT
C4	16° 47' 07"	180.0'	52.73'	CENTERLINE OF WEST DITCH

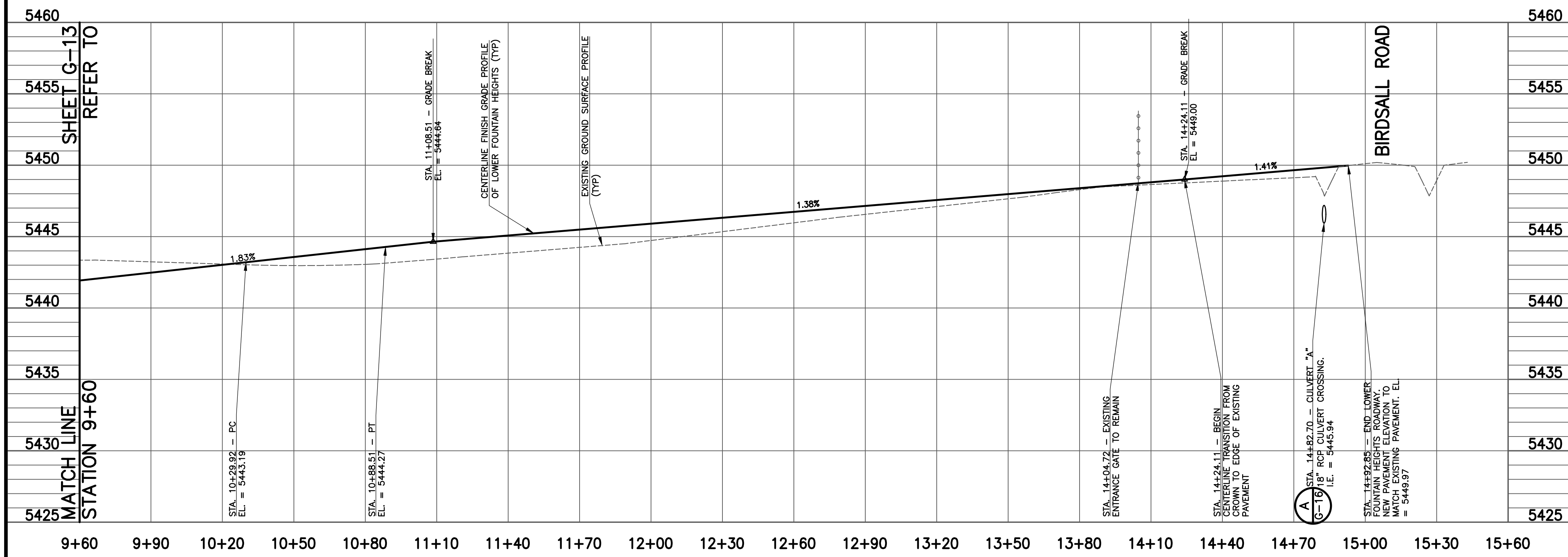
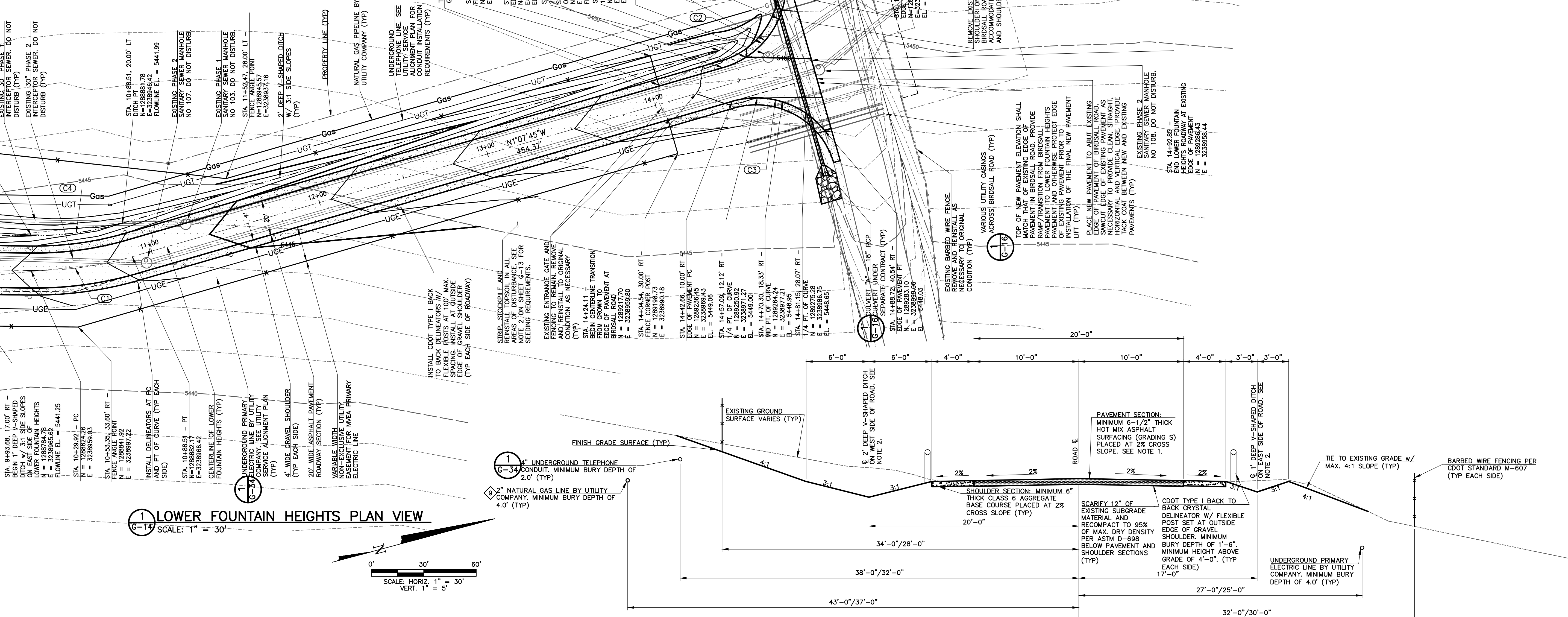
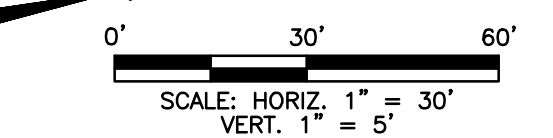
REFER TO SHEET G-13

MATCH LINE STATION 9+60

SHEET G-13 REFER TO

MATCH LINE STATION 9+60

LOWER FOUNTAIN HEIGHTS PLAN VIEW
SCALE: 1" = 30'



LOWER FOUNTAIN HEIGHTS PROFILE
SCALE: HORIZ. 1" = 30', VERT. 1" = 5'

TYPICAL ROAD SECTION - LOWER FOUNTAIN HEIGHTS
SCALE: 1" = 5'

- NOTES:
- HOT MIX ASPHALT PAVEMENT SHALL BE PLACED IN INDIVIDUAL LIFTS OF COMPACTED THICKNESSES NO LESS THAN 1-1/2 INCHES AND NO GREATER THAN 3 INCHES.
 - HORIZONTAL DIMENSIONS AND LOCATIONS VARY FROM THAT SHOWN IN THIS TYPICAL SECTION TOWARD THE SOUTH END OF LOWER FOUNTAIN HEIGHTS. REFER TO THE DETAILS AND COORDINATES GIVEN IN THE DETAILED GRADING PLAN AND ROADWAY PLAN VIEW FROM STA. 1+00 TO STA. 6+00.
 - THOSE DIMENSIONS SHOWN WITH TWO DISTANCES INDICATES THESE DIMENSIONS DIFFER ON THE SOUTH AND NORTH SIDES OF LOWER FOUNTAIN HEIGHTS CENTERLINE CURVE C1 AT STA. 10+59. THE FIRST DISTANCE IS APPLICABLE SOUTH OF CURVE C1 AND THE SECOND DISTANCE IS APPLICABLE NORTH OF CURVE C1, I.E. SOUTH/NORTH.

REVISIONS		
NO.	DATE	DESCRIPTION
1	06/07/2010	ISSUED FOR GAS SERVICE PIPELINE INSTALLATION
2	10/04/2010	REVISED AND RESUBMITTED PER EL PASO COUNTY DEVELOPMENT SERVICES COMMENTS
3	10/18/2010	RESUBMITTED TO EPIC DEVELOPMENT SERVICES
4	12/21/2010	ISSUED FOR FOUNDATION PERMIT SUBMITTAL TO PPRBD (A-BASINS AND DIGESTERS)
5	01/07/2011	ISSUED FOR CONSTRUCTION PER PPRBD PERMIT #8854 (EON ONLY)
6	01/28/2011	ISSUED FOR FOUNDATION PERMIT SUBMITTAL TO PPRBD (HEADWORKS BUILDING)
7	03/30/2011	ISSUED FOR BUILDING PERMIT SUBMITTAL TO PPRBD (SECONDARY CLARIFIER COMPLEX)
8	06/20/2011	ISSUED FOR BUILDING PERMIT SUBMITTAL TO PPRBD (HEADWORKS BUILDING)
9	07/28/2011	ISSUED FOR FOUNDATION PERMIT SUBMITTAL TO PPRBD (EQUIP. MAINT. AND STD. BLDG)
10	08/05/2011	ISSUED FOR CONSTRUCTION PER PPRBD BUILDING PERMIT #8851 (HEADWORKS BLDG)

THIS DRAWING IS THE PROPERTY OF GMS, INC., AND IS NOT TO BE REPRODUCED, MODIFIED OR USED FOR ANY OTHER PROJECT OR EXTENSION OF THIS PROJECT EXCEPT BY AGREEMENT WITH THIS COMPANY.

LOWER FOUNTAIN HEIGHTS PLAN AND PROFILE
STA. 9+60 TO STA. 14+92.85
HAROLD D. THOMPSON REGIONAL WATER RECLAMATION FACILITY
LOWER FOUNTAIN METROPOLITAN SEWAGE DISPOSAL DISTRICT

DRAWN	SLB	GMS, INC. CONSULTING ENGINEERS 611 N. WEBER, SUITE 300 COLORADO SPRINGS, COLORADO 80903	SHEET G-14 OF -
DESIGNED	SLB		
CHECKED	RJS		
DATE	2010		
PROJECT NO.	20166.307		
GMS FILE NO.	2599		