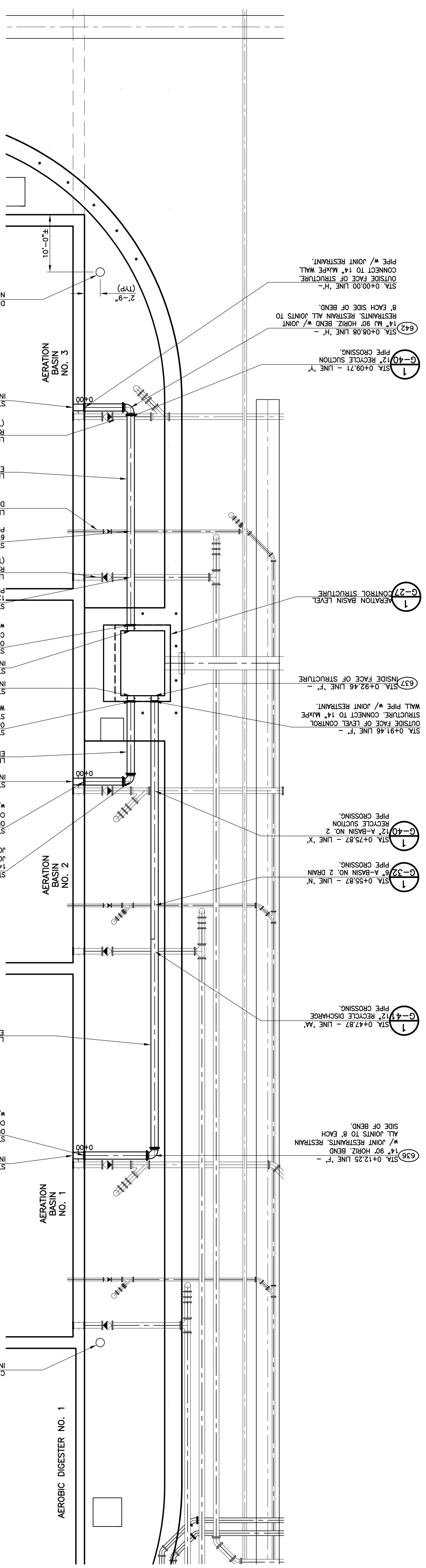
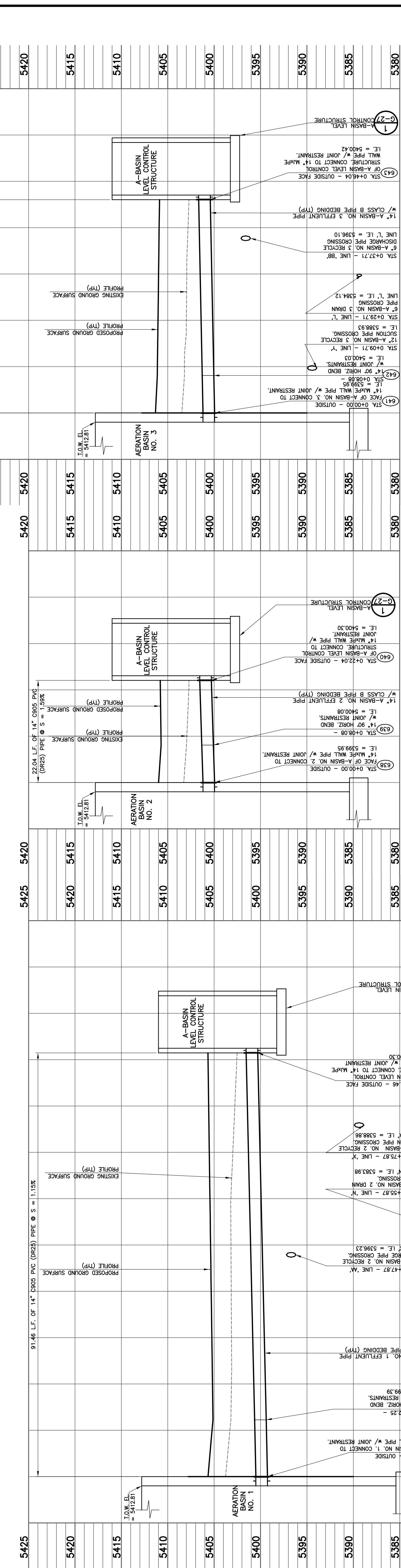


NOTES:
 1. INSTALL MINIMUM 18" PVC PIPE SUMP TO BOTTOM OF VOID ELEVATION FOR A-BASIN SLAB. PERFORATE BOTTOM OF PIPE AND SURROUND W/ MINIMUM 1-1/2" RIVER ROCK WRAPPED IN FILTER FABRIC TO PREVENT CLOGGING. MINIMUM 18" COP OR PLUS AT TOP OF PIPE. A MINIMUM OF 18" ABOVE FINISH GRADE.

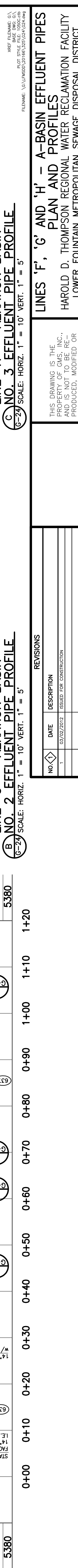


1 LINE 'F', 'G' AND 'H' - AERATION BASIN EFFLUENT PIPES PLAN
 SCALE: 1" = 10'

2 LINE 'H' - AERATION BASIN NO. 3 EFFLUENT PIPE PROFILE
 SCALE: HORIZ. 1" = 10' VERT. 1" = 5'



3 LINE 'G' - AERATION BASIN NO. 2 EFFLUENT PIPE PROFILE
 SCALE: HORIZ. 1" = 10' VERT. 1" = 5'



4 LINE 'F' - AERATION BASIN NO. 1 EFFLUENT PIPE PROFILE
 SCALE: HORIZ. 1" = 10' VERT. 1" = 5'

REVISIONS

NO.	DATE	DESCRIPTION
1	03/02/2012	ISSUED FOR CONSTRUCTION

THIS DRAWING IS THE PROPERTY OF GMS, INC. AND IS NOT TO BE REPRODUCED, MODIFIED OR COPIED IN ANY MANNER WITHOUT THE WRITTEN CONSENT OF GMS, INC. BY AGREEMENT WITH THIS COMPANY.

DRAWN: SKC
 DESIGNED: WAM
 CHECKED: RJS
 DATE: 2012
 PROJECT NO.: 20105.325
 GMS FILE NO.: 2599

GMS, INC.
 CONSULTING ENGINEERS
 611 N. WEBER, SUITE 300
 COLORADO SPRINGS, COLORADO 80903

PROJECT: HAROLD D. THOMPSON REGIONAL WATER RECLAMATION FACILITY LOWER FOUNTAIN METROPOLITAN SEWAGE DISPOSAL DISTRICT
 SHEET: G-24 OF 1