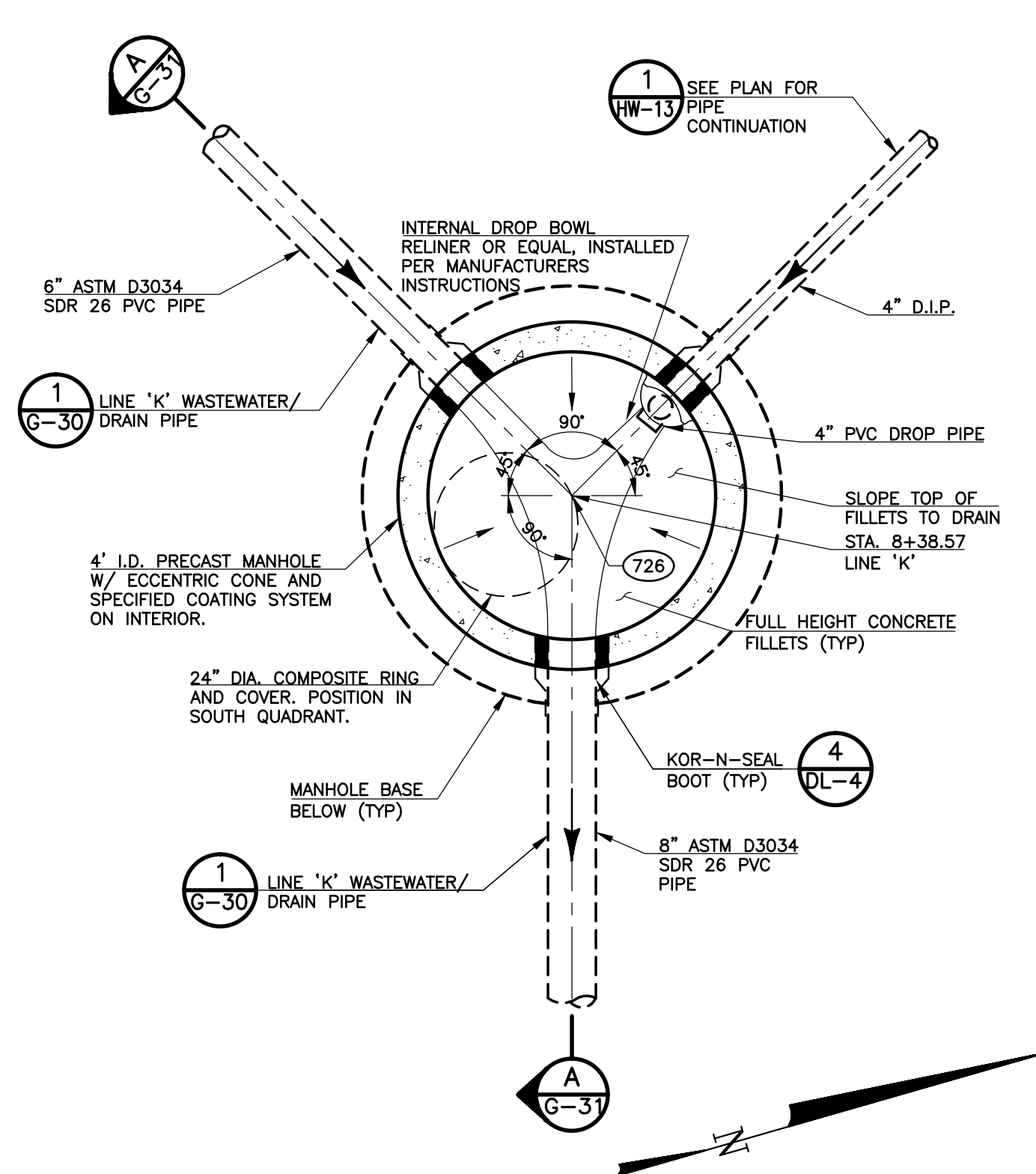


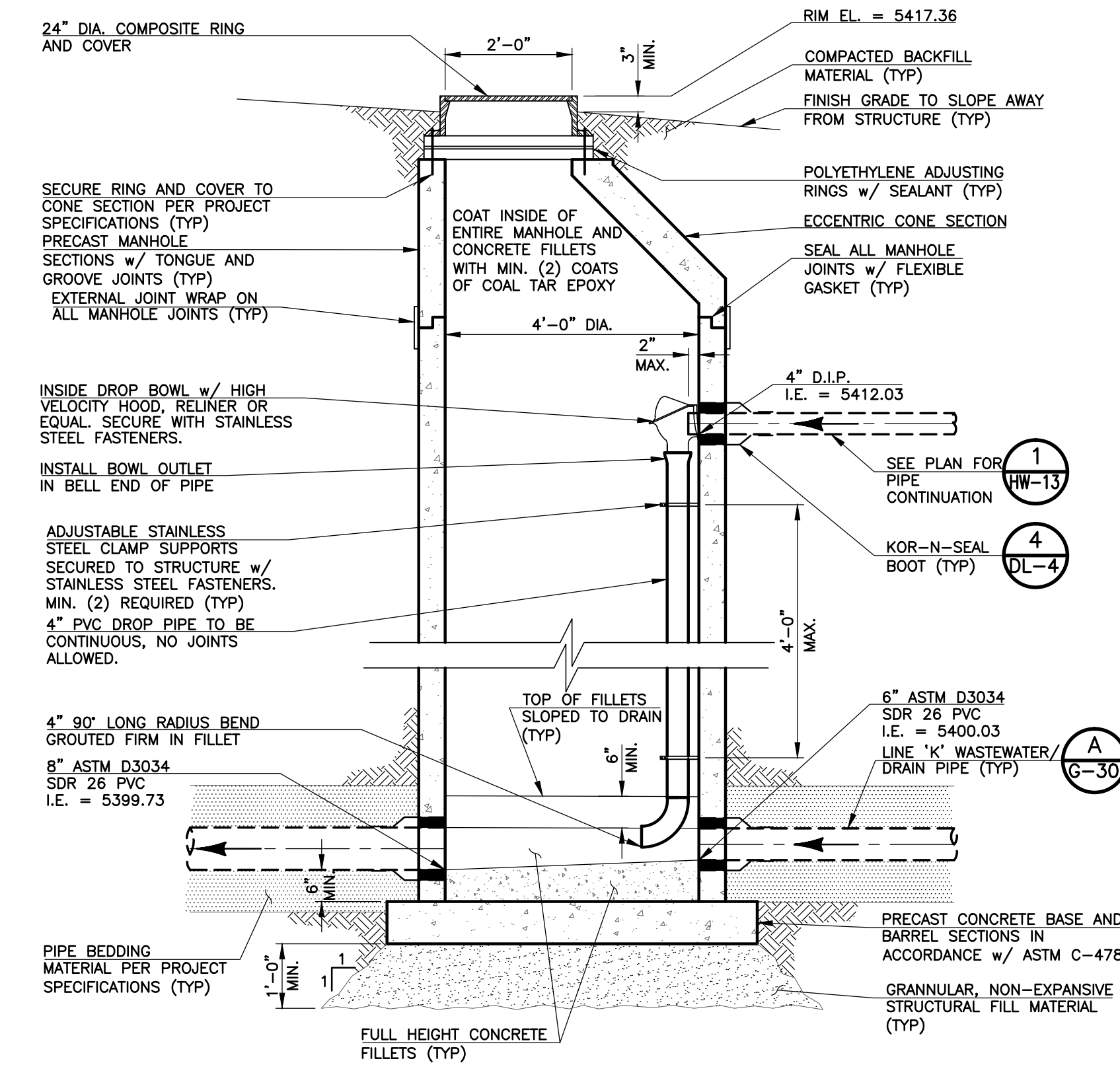
NOTE:

- WHERE 2" HDPE HORIZONTAL BENDS ARE SHOWN ON THE PLANS, THE CONTRACTOR HAS THE OPTION TO INSTALL CONTINUOUS PIPE ON A MINIMUM RADIUS OF 8'-0" TO ACCOMPLISH THE REQUIRED HORIZONTAL DEFLECTION.
- FURNISH AND INSTALL CONTINUOUS TRACER WIRE PER SPECIFICATION SECTION 02708 TAPED TO 2" HDPE.

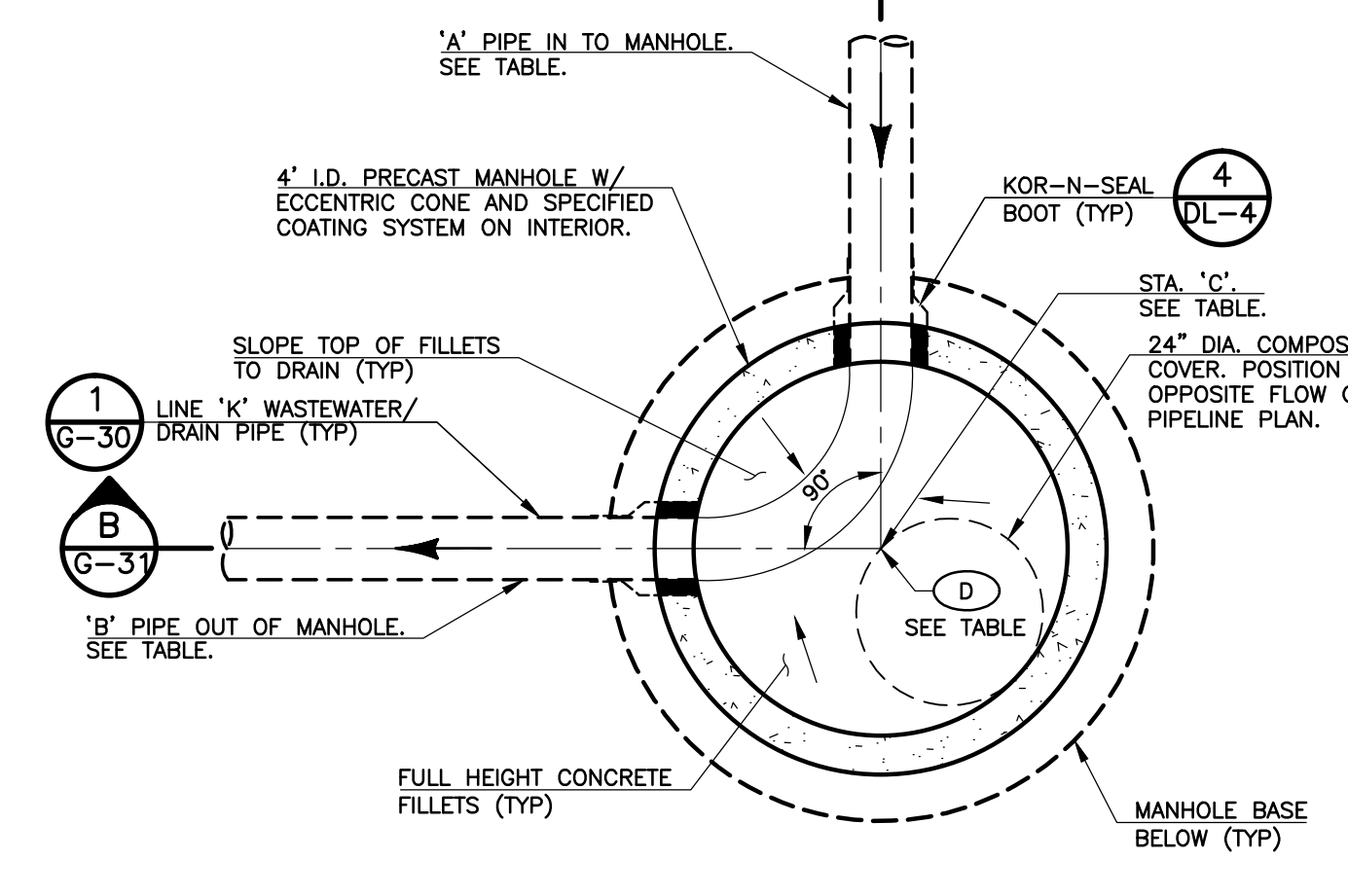
LINE 'S' - WASTEWATER FORCE MAIN PROFILE
SCALE: HORIZ. 1" = 30' VERT. 1" = 5'



MANHOLE MH-12 PLAN
SCALE: 1/2" = 1'-0"

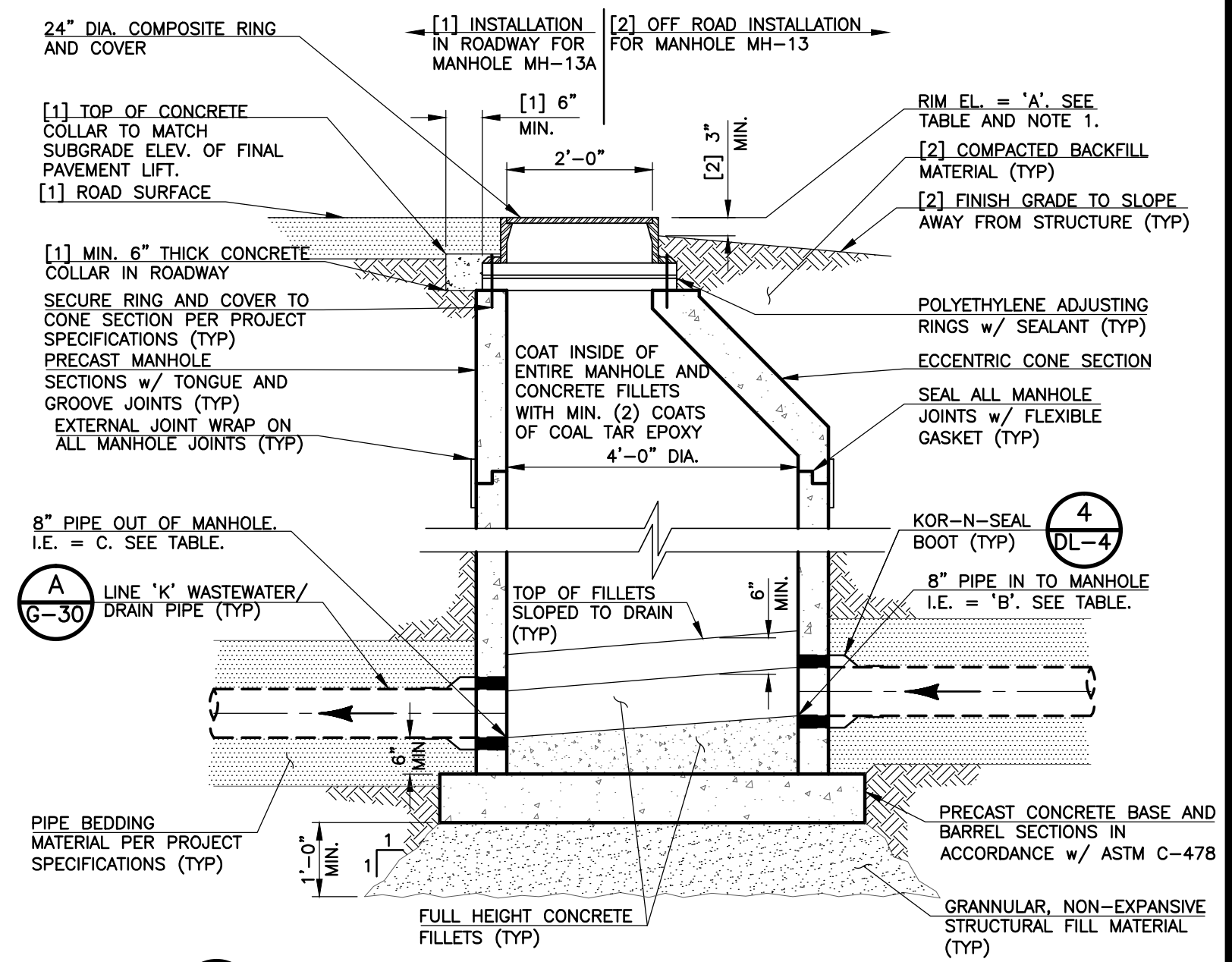


MANHOLE MH-12 SECTION
SCALE: 1/2" = 1'-0"



MANHOLE MH-13 AND MH-13A PLAN
SCALE: 1/2" = 1'-0"

ITEM	MH-13	MH-13A
'A' - PIPE IN	8" ASTM D3034 SDR35 PVC	8" ASTM D3034 SDR35 PVC
'B' - PIPE OUT	8" ASTM D3034 SDR35 PVC	8" D.I.P.
'C' - MH @ STATION	4+63.16	0+90.00
'D' - MH @ COORDINATE	727	728



MANHOLE MH-13 AND MH-13A SECTION
SCALE: 1/2" = 1'-0"

NOTE: 1. VERIFY FINAL RIM ELEVATION WITH FINAL GRADING AND SURFACING REQUIREMENTS.

ITEM	MANHOLE MH-13	MANHOLE MH-13A
'A' - RIM ELEVATION (SEE NOTE 1)	5405.20	5403.92
'B' - INVERT ELEVATION IN	5396.76	5393.89
'C' - INVERT ELEVATION OUT	5396.46	5393.59

REVISIONS		
NO.	DATE	DESCRIPTION
1	03/08/2012	ISSUED FOR CONSTRUCTION

THIS DRAWING IS THE PROPERTY OF GMS, INC., AND IS NOT TO BE REPRODUCED, MODIFIED OR USED FOR ANY OTHER PROJECT OR EXTENSION OF THIS PROJECT EXCEPT BY AGREEMENT WITH THIS COMPANY.

LINE 'S' - WASTEWATER FORCE MAIN PROFILE AND STRUCTURE DETAILS AND SECTIONS
HAROLD D. THOMPSON REGIONAL WATER RECLAMATION FACILITY
LOWER FOUNTAIN METROPOLITAN SEWAGE DISPOSAL DISTRICT

DRAWN	SKC	GMS, INC. CONSULTING ENGINEERS 611 N. WEBER, SUITE 300 COLORADO SPRINGS, COLORADO 80903	SHEET G-31 OF 1
DESIGNED	MAM		
CHECKED	RJS		
DATE	2011		
PROJECT NO.	20166.325		

GMS FILE NO. 2599