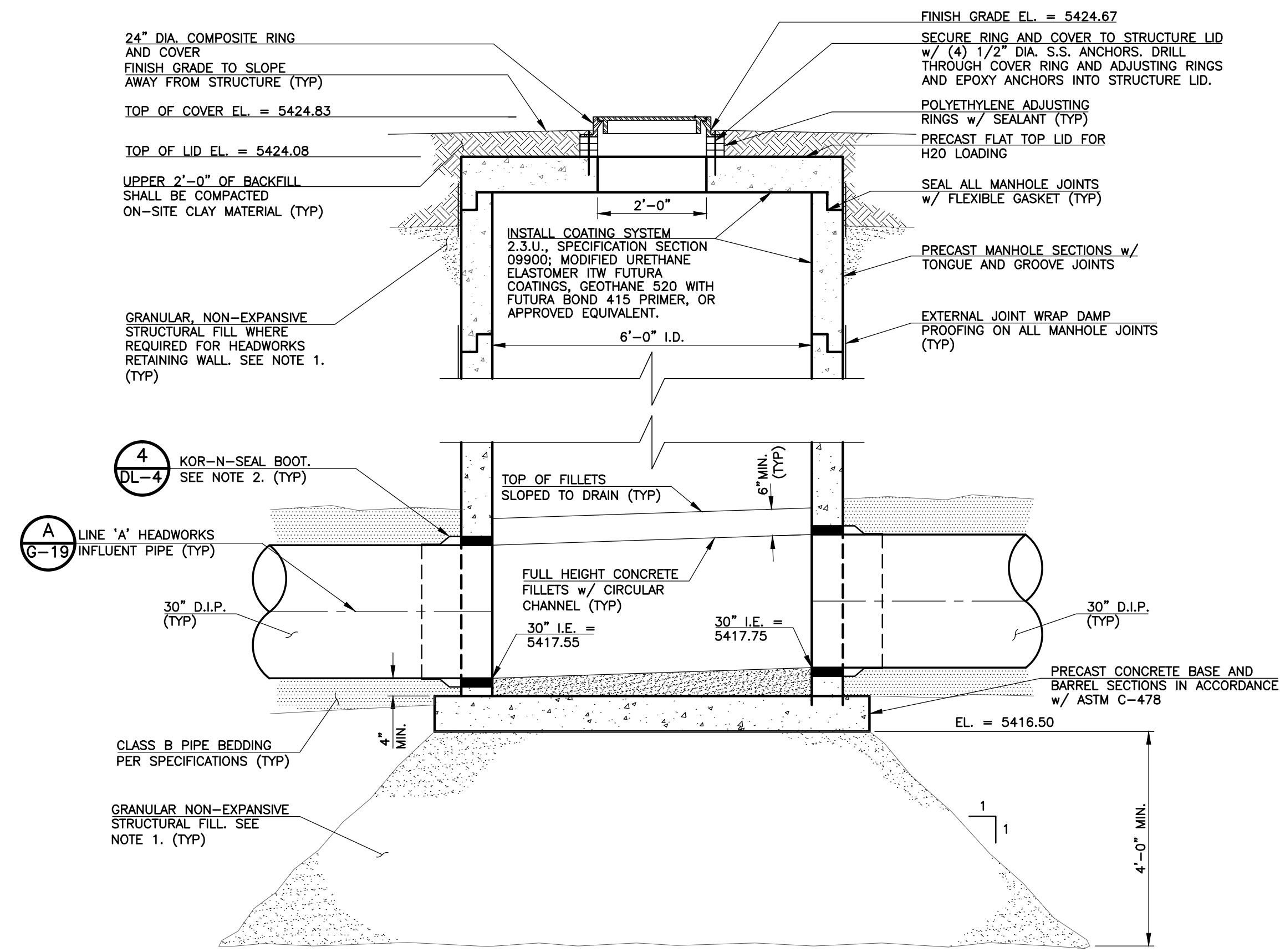


1 MANHOLE MH-01 PLAN
 G-38 SCALE: 1/2" = 1'-0"



NOTES:

- MANHOLE MH-01 REQUIRES STRUCTURAL FILL UNDERNEATH ITS BASE BUT NOT ALONG ITS SIDES. HOWEVER, IT IS LOCATED WITHIN THE STRUCTURAL FILL ENVELOPE OF THE HEADWORKS RETAINING WALL SO THERE WILL BE STRUCTURAL FILL MATERIAL ALONG ITS SIDES IN SOME AREAS. REFER TO THE RETAINING WALL DETAILS FOR THE EXTENTS OF THE STRUCTURAL FILL ENVELOPE.
- ALL KOR-N-SEAL BOOTS SHALL BE FURNISHED AND SECURED WITH DOUBLE STAINLESS STEEL BANDS ON EACH SIDE OF BOOT AND SEALANT AS DESCRIBED IN NOTE 3 BELOW.
- PLACE FULL BED OF "SIKAFLEX 1A" SEALANT AROUND OUTSIDE DIAMETER OF PIPE PRIOR TO FINAL POSITIONING OF BOOT SO SEALANT ACTS AS A LUBRICANT AND COMPLETELY SEALS BOOT TO PIPE IN FINAL POSITION.
- THE KOR-N-SEAL BOOTS SHALL HAVE THE SAME STAINLESS STEEL BANDING AND SEAL REQUIREMENTS AS THOSE DESCRIBED IN NOTES 2 AND 3 ABOVE.
- COATING SYSTEM SHALL BE APPLIED TO A MINIMUM DRY FILM THICKNESS (DFT) OF 50MILS. APPLY SPECIFIED PRIMER TO 2 TO 5MILS DFT AND TWO (2) FINISH COATS AT 25MILS DFT EACH.

A MANHOLE MH-01 SECTION
 G-38 SCALE: 1/2" = 1'-0"

REVISIONS		
NO.	DATE	DESCRIPTION
1	12/14/2011	ISSUED FOR MANHOLE MH-01 CONSTRUCTION

THIS DRAWING IS THE PROPERTY OF GMS, INC., AND IS NOT TO BE REPRODUCED, MODIFIED OR USED FOR ANY OTHER PROJECT OR EXTENSION OF THIS PROJECT EXCEPT BY AGREEMENT WITH THIS COMPANY.

2010 GMS, INC.

STRUCTURE DETAILS AND SECTIONS HAROLD D. THOMPSON REGIONAL WATER RECLAMATION FACILITY LOWER FOUNTAIN METROPOLITAN SEWAGE DISPOSAL DISTRICT	GMS, INC. CONSULTING ENGINEERS 611 N. WEBER, SUITE 300 COLORADO SPRINGS, COLORADO 80903	SHEET G-38 OF —
---	---	---------------------------------

DRAWN: MAL DESIGNED: MAM/ CHECKED: RJS DATE: 2010 PROJECT NO.: 20166.325 GMS FILE NO.: 2599
--

XREF FILENAME: G:\
 BASE DWG: G-1
 PLOT STYLE FILE: 10550.C38
 FILENAME: G:\FM5020\20166\325\G38\G38.DWG

C:\Users\GMS\OneDrive\Documents\GMS\20166\325\G38.dwg, 038_12/14/2011 3:47:51 PM, .dwg to pdf, pgs. 11