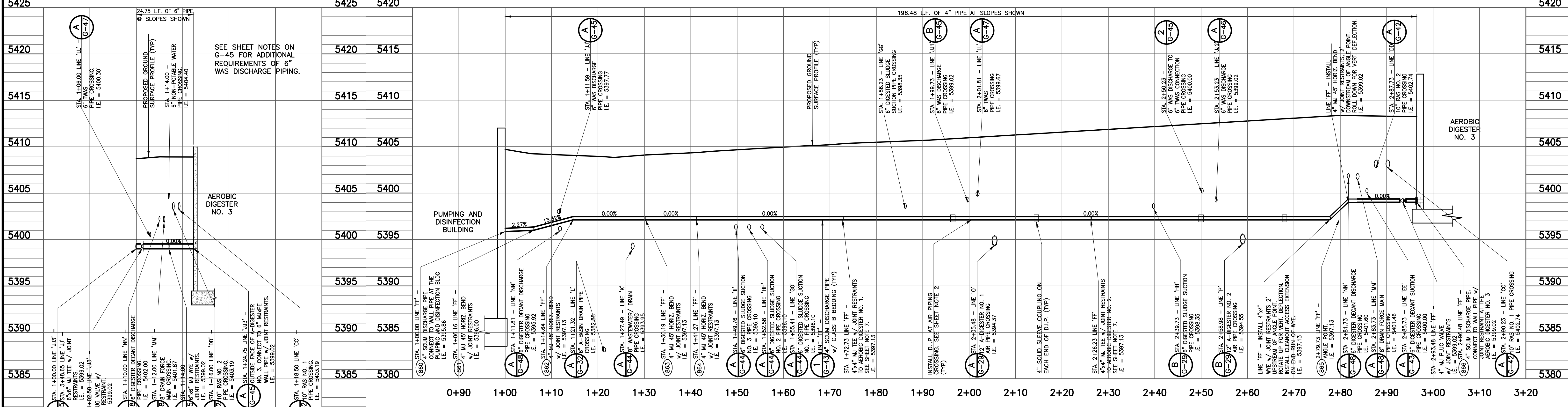


(A) LINE 'JJ2' - WAS DISCHARGE PIPE PROFILE
 SCALE: HORIZ. 1" = 20'; VERT. 1" = 5'

(B) LINE 'KK' - 6" DIGESTED SLUDGE DISCHARGE PIPE PROFILE
 SCALE: HORIZ. 1" = 20'; VERT. 1" = 5'



(C) LINE 'JJ3' - WAS DISCHARGE PIPE PROFILE
 SCALE: HORIZ. 1" = 20'; VERT. 1" = 5'

(D) LINE 'FF' - 4" SCUM DISCHARGE PIPE PROFILE
 SCALE: HORIZ. 1" = 10'; VERT. 1" = 5'

- FOR ALL 6" FITTINGS WITH JOINT RESTRAINTS ON DIGESTED SLUDGE DISCHARGE PIPING, RESTRAIN ALL JOINTS ON EACH SIDE OF BEND OR FITTING A MINIMUM LENGTH OF 5 FEET.
- FOR ALL 4" FITTINGS WITH JOINT RESTRAINTS ON SCUM DISCHARGE PIPING, RESTRAIN ALL JOINTS ON EACH SIDE OF BEND OR FITTING A MINIMUM LENGTH OF 2 FEET.
- PROVIDE VALVES ON ALL PRESSURE CLEANOUT ASSEMBLIES PER DETAIL E/DL-3.
- ALL DIGESTED SLUDGE DISCHARGE AND SCUM DISCHARGE PIPE SHALL BE ASTM D2241 SDR21 PVC EXCEPT FOR THE D.I.P. SHOWN AT AIR PIPE CROSSINGS OR AS OTHERWISE NOTED.
- FOR AEROBIC DIGESTER BASIN NOS. 1 AND 2, THE SCUM DISCHARGE PIPING AND VALVES FROM THE BASIN TO THE MAIN LINE WYE SHALL BE INSTALLED THE SAME AS THAT SHOWN FOR AEROBIC DIGESTER BASIN NO. 3.
- CONTRACTOR MAY INSTALL 4" SCUM DISCHARGE FROM DIGESTER BASIN NO. 3 TO EAST END OF D.I.P. AT AIR PIPE CROSSING AT A STRAIGHT BETWEEN THE ELEVATIONS SHOWN AT THOSE TWO JOINTS. THIS IS ALLOWABLE ONLY AT DIGESTER BASIN NO. 3. SCUM DISCHARGE PIPING FROM DIGESTER BASIN NOS. 1 AND 2 SHALL BE CONSTRUCTED PER PROFILE DETAILS.

SHEET NOTES:

- VALVE OPERATOR EXTENSIONS REQUIRED ON ALL VALVE OPERATING NUTS MORE THAN 5- FEET BELOW FINISHED SURFACE.
- D.I.P. INSTALLED AT AIR PIPING CROSSINGS SHALL BE A SINGLE STICK OF CEMENT MORTAR LINED PIPE CENTERED ON THE CROSSING UNLESS OTHERWISE NOTED AS BEING INSTALLED TO AN ADJACENT FITTING, CUT BELL END OFF OF PIPE AND PROVIDE FIELD TOUCH-UP/REPAIR OF LINED END ACCORDING TO MANUFACTURER'S RECOMMENDATIONS PRIOR TO FINAL INSTALLATION IN COUPLINGS AND/OR ADJACENT FITTINGS.

REVISIONS		
NO.	DATE	DESCRIPTION
1	07/31/2012	ISSUED FOR CONSTRUCTION

THIS DRAWING IS THE PROPERTY OF GMS, INC., AND IS NOT TO BE REPRODUCED, MODIFIED OR USED FOR ANY OTHER PROJECT OR EXTENSION OF THIS PROJECT EXCEPT BY AGREEMENT WITH THIS COMPANY.

LINE 'KK' - 6" DIGESTED SLUDGE DISCHARGE PROFILE
LINE 'FF' - 4" SCUM DISCHARGE PROFILE
 HAROLD D. THOMPSON REGIONAL WATER RECLAMATION FACILITY
 LOWER FOUNTAIN METROPOLITAN SEWER DISPOSAL DISTRICT

DRAWN: SKC
 DESIGNED: MAM
 CHECKED: RJS
 DATE: 2012
 PROJECT NO.: 20166.325
 GMS FILE NO.: 2599

GMS, INC.
 CONSULTING ENGINEERS
 611 N. WEBER, SUITE 300
 COLORADO SPRINGS, COLORADO 80903

SHEET **G-46** OF 1