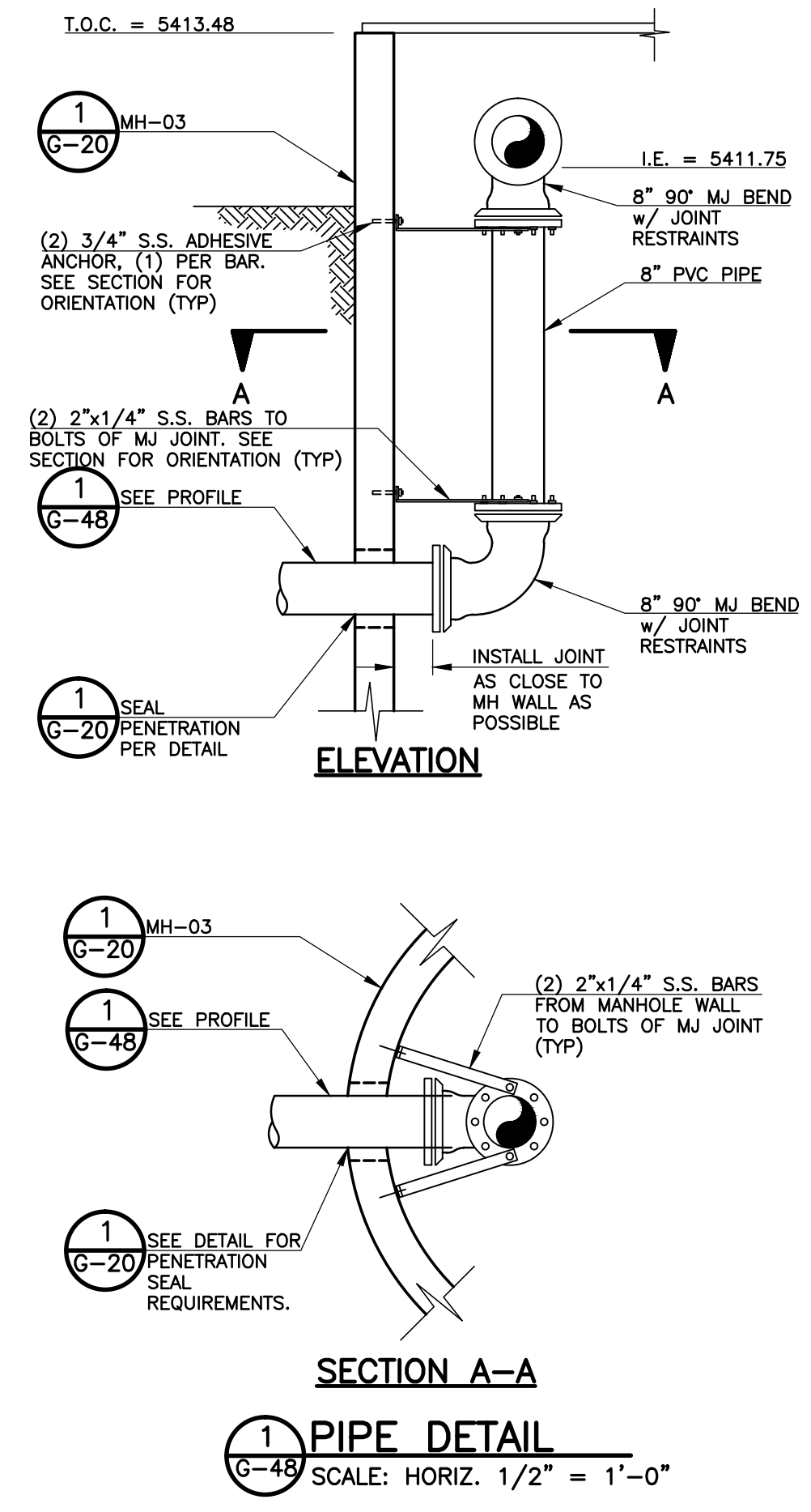
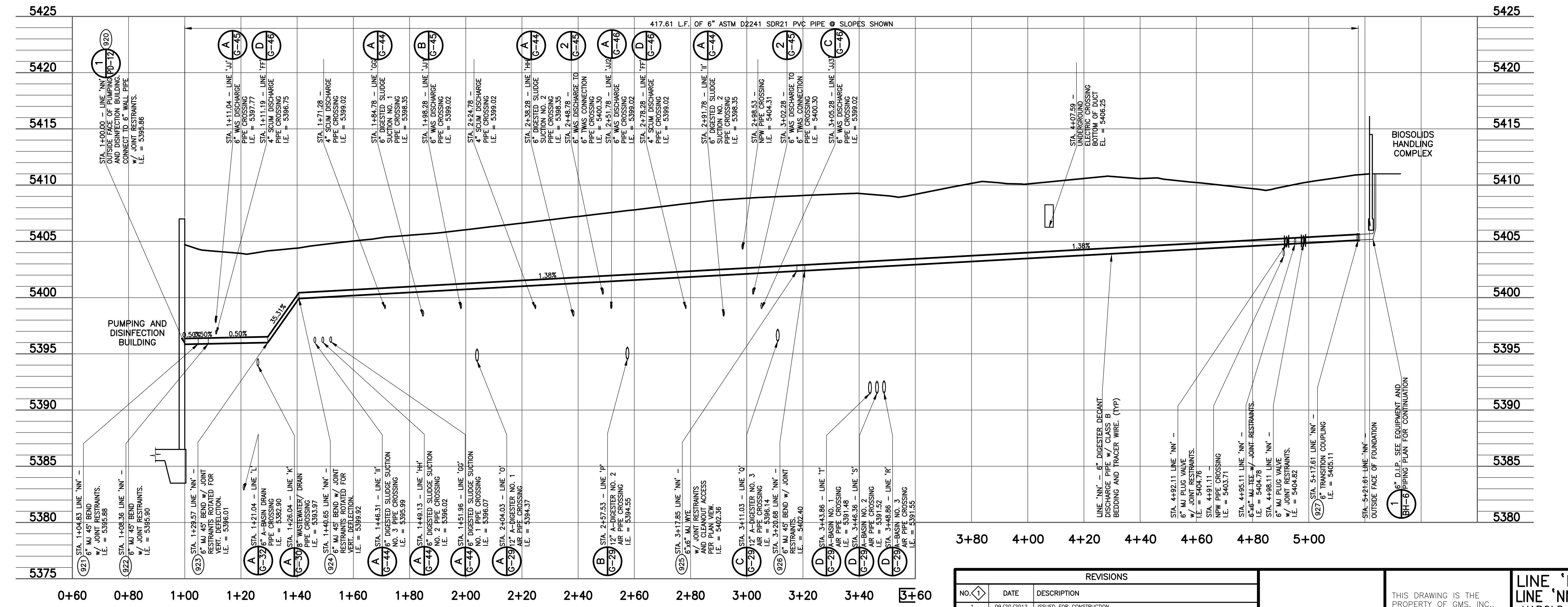


(A) LINE 'MM' - 8" DRAIN FORCE MAIN PROFILE
 SCALE: HORIZ. 1" = 20' VERT. 1" = 5'



(1) PIPE DETAIL
 SCALE: HORIZ. 1/2" = 1'-0"



(B) LINE 'NN' - 6" DIGESTER DECANT DISCHARGE PROFILE
 SCALE: HORIZ. 1" = 20' VERT. 1" = 5'

- SHEET NOTES:**
1. VALVE OPERATOR EXTENSIONS REQUIRED ON ALL VALVE OPERATING NUTS MORE THAN 4- FEET BELOW FINISHED SURFACE.
 2. FOR ALL 6" FITTINGS WITH JOINT RESTRAINTS ON DIGESTER DECANT DISCHARGE PIPING, RESTRAIN ALL JOINTS ON EACH SIDE OF BEND OR FITTING A MINIMUM LENGTH OF 5 FEET, EXCEPT FOR BRANCH SIDE OF TEES THAT REQUIRE A MINIMUM 8 FEET OF RESTRAINED PIPE.
 3. FOR ALL 8" FITTINGS WITH JOINT RESTRAINTS ON DRAIN FORCE MAIN PIPING, RESTRAIN ALL JOINTS ON EACH SIDE OF BEND OR FITTING A MINIMUM LENGTH OF 5 FEET.

REVISIONS		
NO.	DATE	DESCRIPTION
1	09/20/2012	ISSUED FOR CONSTRUCTION

THIS DRAWING IS THE PROPERTY OF GMS, INC., AND IS NOT TO BE REPRODUCED, MODIFIED OR USED FOR ANY OTHER PROJECT OR EXTENSION OF THIS PROJECT EXCEPT BY AGREEMENT WITH THIS COMPANY.

LINE 'MM' - 8" DRAIN FORCE MAIN PROFILE
LINE 'NN' - 6" DIGESTER DECANT DISCHARGE PROFILE
 HAROLD D. THOMPSON REGIONAL WATER RECLAMATION FACILITY
 LOWER FOUNTAIN METROPOLITAN SEWAGE DISPOSAL DISTRICT

DRAWN	SKC
DESIGNED	MAM
CHECKED	RJS
DATE	2012
PROJECT NO.	20166.325
GMS FILE NO.	2599

GMS, INC.
 CONSULTING ENGINEERS
 611 N. WEBER, SUITE 300
 COLORADO SPRINGS, COLORADO 80903

SHEET **G-48** OF **1**

XREF FILENAME: G:\BASE DWG.G...
 PLOT STYLE FILE: 10500.ctb
 FILENAME: G:\L\FMSD\20166\325\G48\G48.dwg