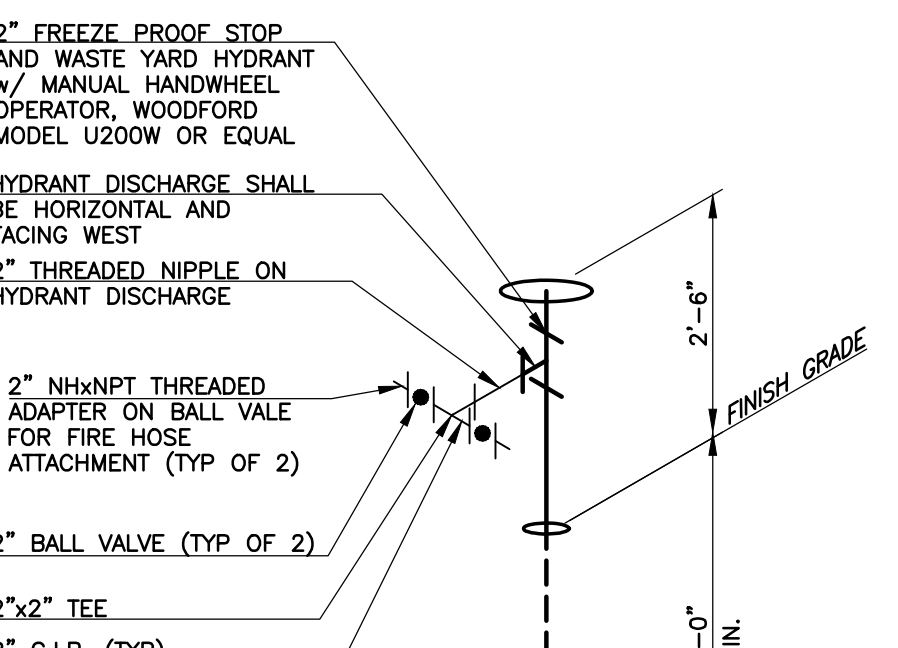
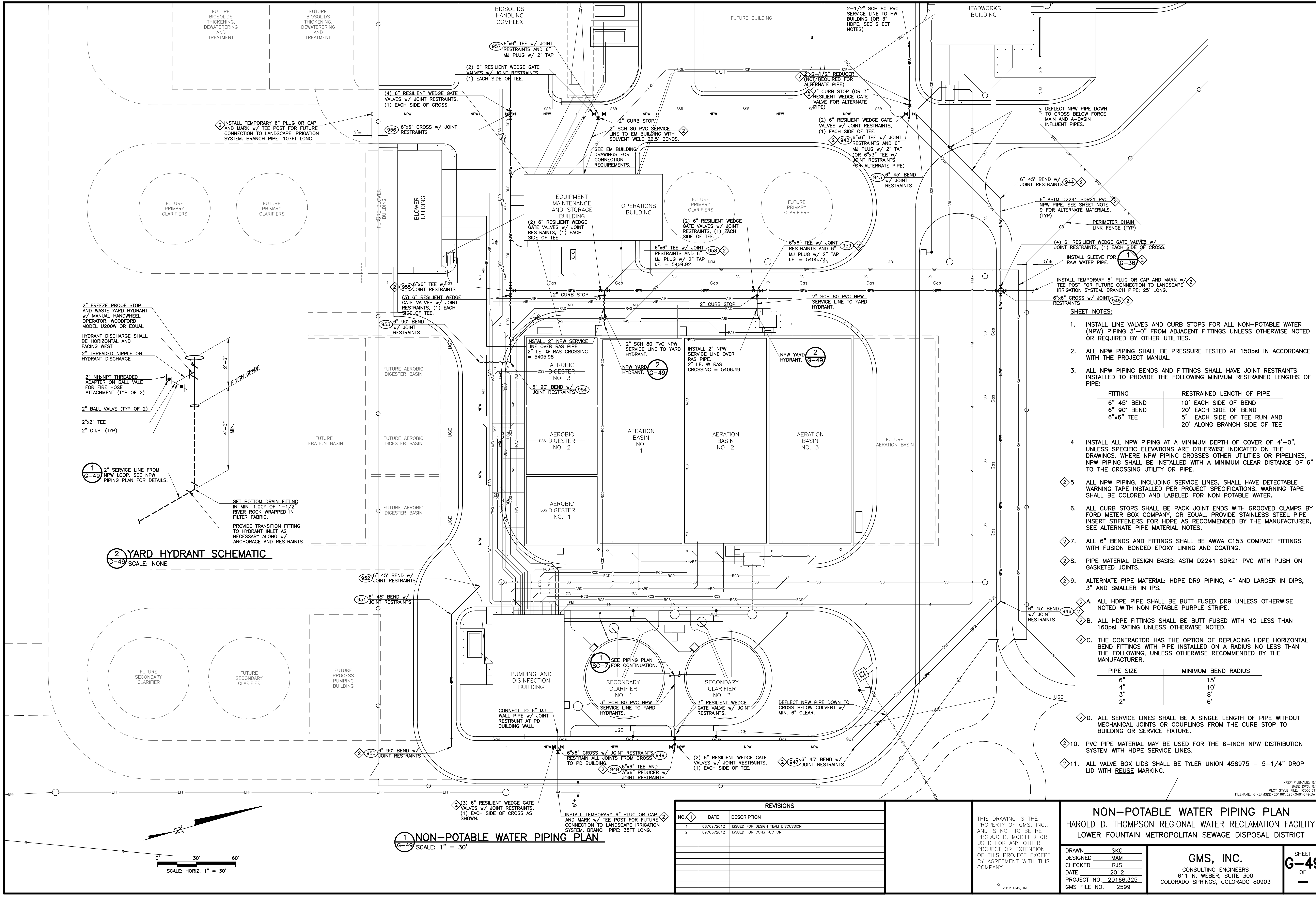


C:\PDS\2012\10\201206\201206049.dwg, G49, 9/8/2012 4:52:31 PM, ac, DWG To PDF.pc3, 1:1



2 YARD HYDRANT SCHEMATIC
 G-49 SCALE: NONE

1 NON-POTABLE WATER PIPING PLAN
 G-49 SCALE: 1" = 30'

- SHEET NOTES:**
- INSTALL LINE VALVES AND CURB STOPS FOR ALL NON-POTABLE WATER (NPW) PIPING 3'-0" FROM ADJACENT FITTINGS UNLESS OTHERWISE NOTED OR REQUIRED BY OTHER UTILITIES.
 - ALL NPW PIPING SHALL BE PRESSURE TESTED AT 150psi IN ACCORDANCE WITH THE PROJECT MANUAL.
 - ALL NPW PIPING BENDS AND FITTINGS SHALL HAVE JOINT RESTRAINTS INSTALLED TO PROVIDE THE FOLLOWING MINIMUM RESTRAINED LENGTHS OF PIPE:

FITTING	RESTRAINED LENGTH OF PIPE
6" 45° BEND	10' EACH SIDE OF BEND
6" 90° BEND	20' EACH SIDE OF BEND
6"x6" TEE	5' EACH SIDE OF TEE RUN AND 20' ALONG BRANCH SIDE OF TEE
 - INSTALL ALL NPW PIPING AT A MINIMUM DEPTH OF COVER OF 4'-0", UNLESS SPECIFIC ELEVATIONS ARE OTHERWISE INDICATED ON THE DRAWINGS. WHERE NPW PIPING CROSSES OTHER UTILITIES OR PIPELINES, NPW PIPING SHALL BE INSTALLED WITH A MINIMUM CLEAR DISTANCE OF 6" TO THE CROSSING UTILITY OR PIPE.
 - ALL NPW PIPING, INCLUDING SERVICE LINES, SHALL HAVE DETECTABLE WARNING TAPE INSTALLED PER PROJECT SPECIFICATIONS. WARNING TAPE SHALL BE COLORED AND LABELED FOR NON-POTABLE WATER.
 - ALL CURB STOPS SHALL BE PACK JOINT ENDS WITH GROOVED CLAMPS BY FORD METER BOX COMPANY OR EQUAL. PROVIDE STAINLESS STEEL PIPE INSERT STIFFENERS FOR HDPE AS RECOMMENDED BY THE MANUFACTURER, SEE ALTERNATE PIPE MATERIAL NOTES.
 - ALL 6" BENDS AND FITTINGS SHALL BE AWWA C153 COMPACT FITTINGS WITH FUSION BONDED EPOXY LINING AND COATING.
 - PIPE MATERIAL DESIGN BASIS: ASTM D2241 SDR21 PVC WITH PUSH ON GASKETED JOINTS.
 - ALTERNATE PIPE MATERIAL: HDPE DR9 PIPING, 4" AND LARGER IN DIAPHS, 3" AND SMALLER IN IPS.
 - ALL HDPE PIPE SHALL BE BUTT FUSED DR9 UNLESS OTHERWISE NOTED WITH NON-POTABLE PURPLE STRIPE.
 - ALL HDPE FITTINGS SHALL BE BUTT FUSED WITH NO LESS THAN 160psi RATING UNLESS OTHERWISE NOTED.
 - THE CONTRACTOR HAS THE OPTION OF REPLACING HDPE HORIZONTAL BEND FITTINGS WITH PIPE INSTALLED ON A RADIUS NO LESS THAN THE FOLLOWING, UNLESS OTHERWISE RECOMMENDED BY THE MANUFACTURER.

PIPE SIZE	MINIMUM BEND RADIUS
6"	15'
4"	10'
3"	8'
2"	6'
 - ALL SERVICE LINES SHALL BE A SINGLE LENGTH OF PIPE WITHOUT MECHANICAL JOINTS OR COUPLINGS FROM THE CURB STOP TO BUILDING OR SERVICE FIXTURE.
 - PVC PIPE MATERIAL MAY BE USED FOR THE 6-INCH NPW DISTRIBUTION SYSTEM WITH HDPE SERVICE LINES.
 - ALL VALVE BOX LIDS SHALL BE TYLER UNION 458975 - 5-1/4" DROP LID WITH REUSE MARKING.

REVISIONS		
NO.	DATE	DESCRIPTION
1	08/09/2012	ISSUED FOR DESIGN TEAM DISCUSSION
2	09/06/2012	ISSUED FOR CONSTRUCTION

THIS DRAWING IS THE PROPERTY OF GMS, INC., AND IS NOT TO BE REPRODUCED, MODIFIED OR USED FOR ANY OTHER PROJECT OR EXTENSION OF THIS PROJECT EXCEPT BY AGREEMENT WITH THIS COMPANY.

NON-POTABLE WATER PIPING PLAN HAROLD D. THOMPSON REGIONAL WATER RECLAMATION FACILITY LOWER FOUNTAIN METROPOLITAN SEWAGE DISPOSAL DISTRICT		GMS, INC. CONSULTING ENGINEERS 611 N. WEBER, SUITE 300 COLORADO SPRINGS, COLORADO 80903	SHEET G-49 OF -
DRAWN: SKC DESIGNED: MAM CHECKED: RJS DATE: 2012 PROJECT NO.: 20166.325 GMS FILE NO.: 2599			

XREF FILENAME: G:\BASE DWG: G:\PLOT STYLE FILE: T05052.DWG
 FILENAME: G:\PDS\2012\10\201206\201206049.dwg, G49, DGN