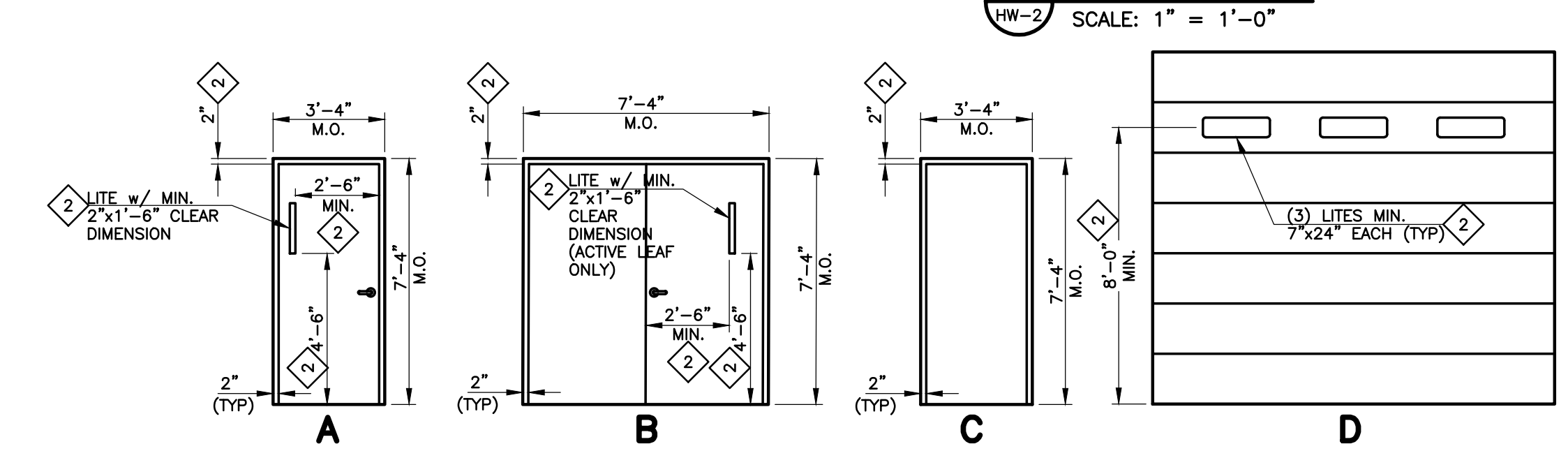
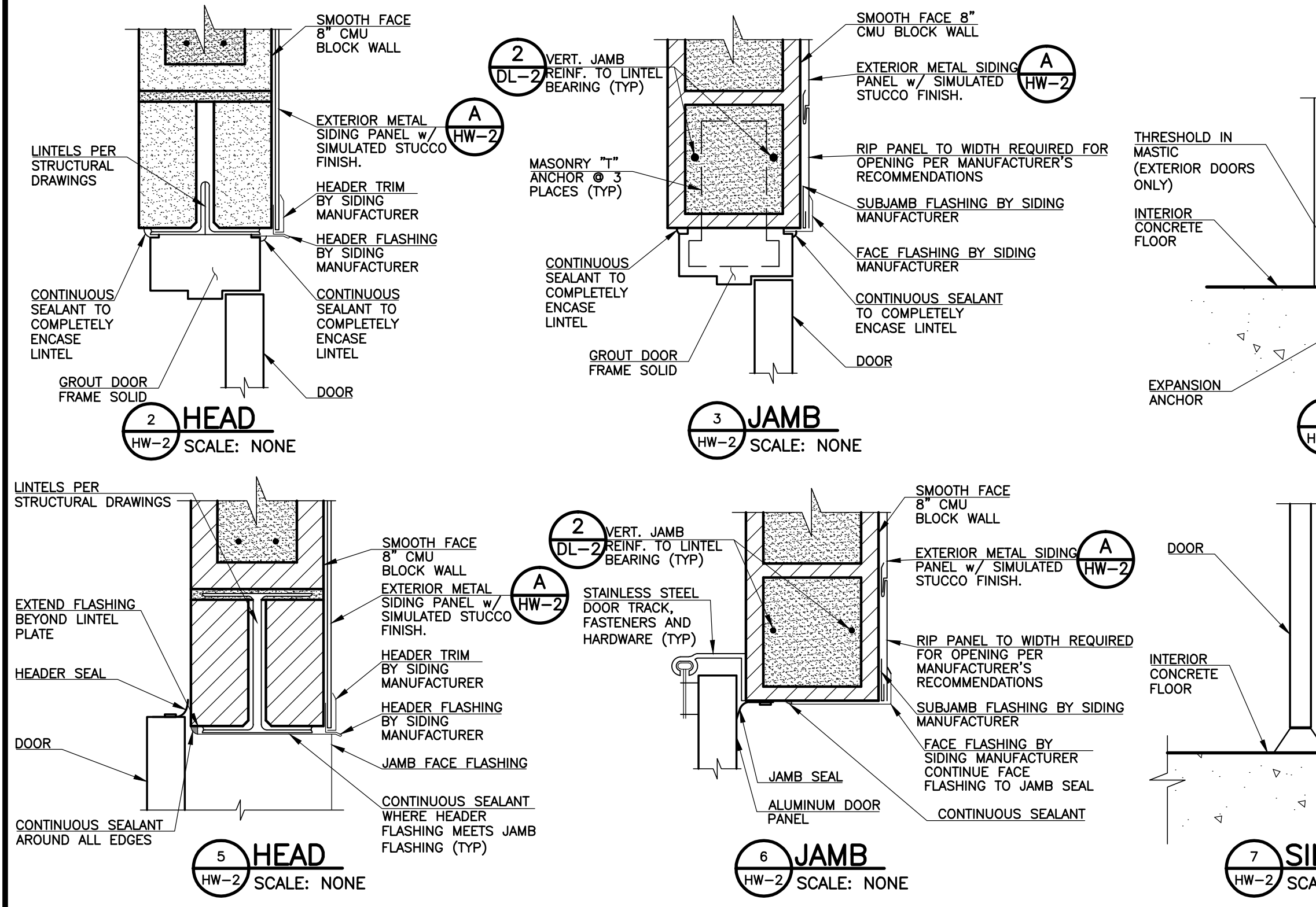


**WINDOW SCHEDULE**

TAG	WIDTH	HEIGHT	TYPE	COMMENT
W-HW1	3'-4"	2'-8"	FIXED	FIBERGLASS REINFORCED PLASTIC (FRP) FRAME, SET BOTTOM OF WINDOW 4'-0" ABOVE FINISHED FLOOR. SEE NOTES BELOW
W-HW2	3'-4"	2'-8"	FIXED	FIBERGLASS REINFORCED PLASTIC (FRP) FRAME, SET BOTTOM OF WINDOW 4'-0" ABOVE FINISHED FLOOR. SEE NOTES BELOW

- NOTES:**
- ALL WINDOWS SHALL RECEIVE TRIM AND SEALANT AS IF THEY ARE INSTALLED IN AN EXTERIOR WALL, WITH PRELIMINARY TREATMENT AREA SIDE BEING THE EXTERIOR. WINDOWS AND FRAMES SHALL BE CONTINUOUSLY SEALED FOR A GAS TIGHT INSTALLATION.
  - REFER TO THE PROJECT SPECIFICATIONS FOR FACTORY COATING SYSTEM REQUIREMENTS FOR FIBERGLASS REINFORCED PLASTIC WINDOW FRAMES.



**DOOR SCHEDULE**

TAG	WIDTH	HEIGHT	TYPE	HAND	HARDWARE SET	HEAD	JAMB	SILL	COMMENT
D-HW1	3'-0"	7'-2"	A	RHR	SEE NOTE 6	2	3	4	STAINLESS STEEL OR ALUMINUM DOOR(S) AND FRAME AND STAINLESS STEEL HARDWARE w/ MECHANICAL PUSHBUTTON SECURITY SYSTEM. SEE NOTES BELOW.
D-HW2	3'-0"	7'-2"	B	LHR	SEE NOTE 6	2	3	4	STAINLESS STEEL OR ALUMINUM DOOR(S) AND FRAME AND STAINLESS STEEL HARDWARE w/ MECHANICAL PUSHBUTTON SECURITY SYSTEM. SEE NOTES BELOW.
D-HW3	14'-0"	14'-0"	D	---	---	5	6	7	PROVIDE PAD LOCK HASP THROUGH TRACK ABOVE FLOOR, INSULATED PANELS, AND LOW HEADROOM TRACKS AS REQUIRED. SEE NOTE NO. 2.
D-HW4	3'-0"	7'-2"	B	LHR	SEE NOTE 6	2	3	4	STAINLESS STEEL OR ALUMINUM DOOR(S) AND FRAME w/ STAINLESS STEEL HARDWARE. SEE NOTES BELOW.
D-HW5	12'-0"	12'-0"	D	---	---	5	6	7	PROVIDE PAD LOCK HASP THROUGH TRACK ABOVE FLOOR, INSULATED PANELS. SEE NOTE NO. 2.
D-HW6	7'-0"	7'-2"	B	RHR	SEE NOTE 6	2	3	4	3'-6" PAIR DOORS, WEST LEAF IS ACTIVE. STAINLESS STEEL OR ALUMINUM DOOR(S) AND FRAME w/ STAINLESS STEEL HARDWARE. SEE BUILDING FLOOR PLAN FOR INACTIVE LEAF STOP LOCATION. SEE NOTES BELOW.

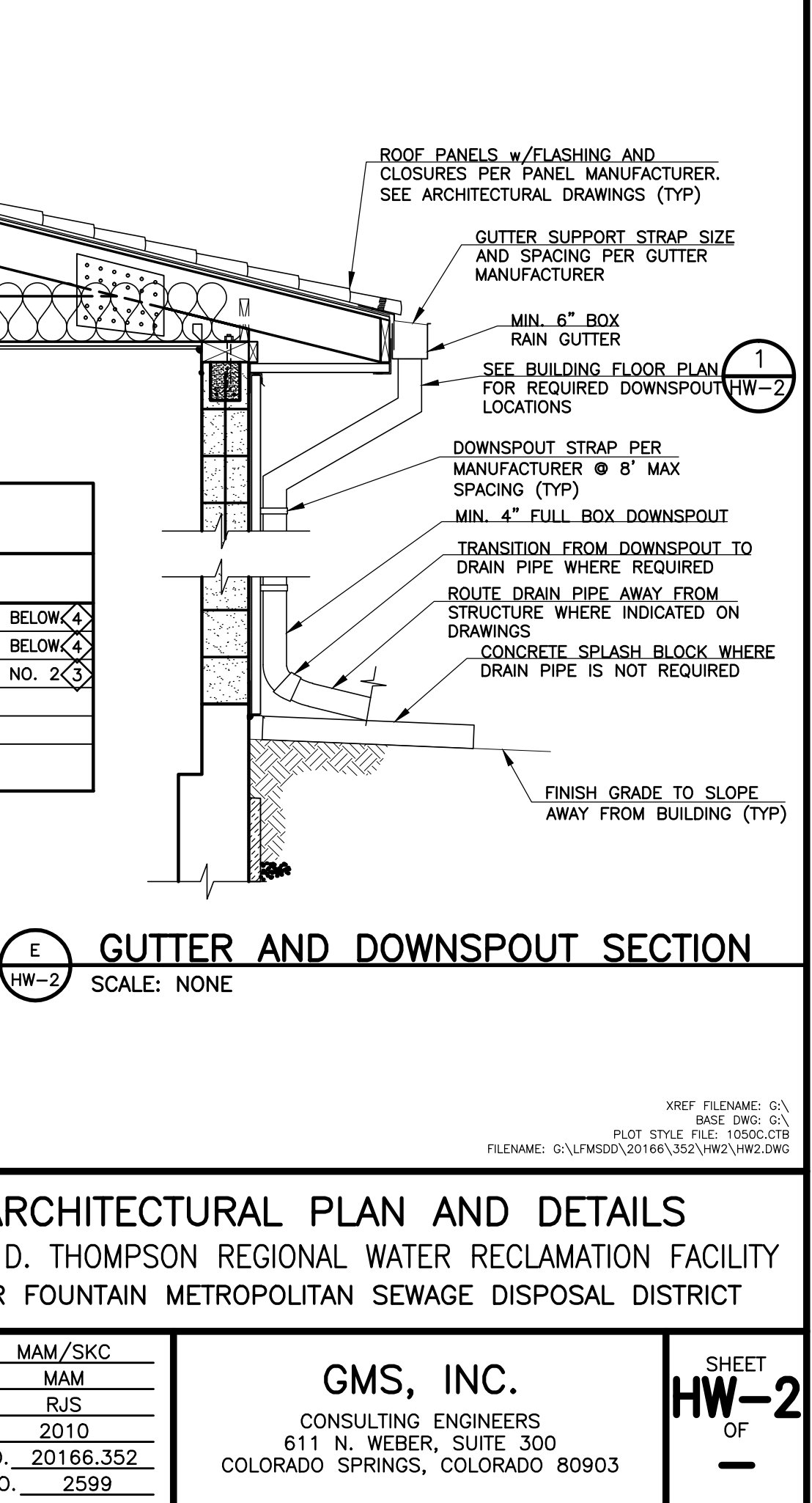
- NOTES:**
- REFER TO THE PROJECT MANUAL FOR FINISH REQUIREMENTS OF STAINLESS STEEL AND ALUMINUM DOORS AND DOOR FRAMES.
  - OVERHEAD DOORS SHALL BE PROVIDED WITH STAINLESS STEEL TRACKS, FASTENERS, HARDWARE AND APPURTENANCES AS SPECIFIED IN THE PROJECT MANUAL.
  - REFER TO PROJECT MANUAL FOR HARDWARE SPECIFICATIONS.
  - REFER TO MECHANICAL DRAWINGS FOR LOCATIONS OF DUCTWORK AND EQUIPMENT.
  - PROVIDE DOOR LATCH SHIELDS ON ALL OUTWARD OPENING EXTERIOR DOORS.
  - ALL MAN DOORS INDICATED SHALL BE PROVIDED WITH MECHANICAL PUSHBUTTON SECURITY SYSTEM PER SPECIFICATIONS.

**ROOM FINISH SCHEDULE**

ROOMS/AREAS	FLOOR/SLAB		WALLS		CEILING		COMMENT
	CONCRETE, SEALED	CONCRETE COATED/LINED	CMU, PAINTED	CONCRETE COATED/LINED	HARD-PANEL OVER GWB, PAINTED	GWB, PAINTED	
PRELIMINARY TREATMENT AREA	X		X				APPLY CONTINUOUS POLYUREA ELASTOMER COATINGS SYSTEM ON BOTTOM 4'-0" OF WALLS AND EQUIPMENT-BEAM SUPPORT COLUMNS, EXTENDING 6" ONTO FLOORS.
ELECTRICAL AND CONTROL ROOM	X		X		X		RUBBER COVE BASE AT ALL WALLS
CHANNELS AND GRIT CHAMBERS		X		X			INSTALL T-Lock LINING SYSTEM ON UNDERSIDE OF SUSPENDED SLABS OVER CHANNELS AND GRIT CHAMBERS. PROVIDE STANDARD 2"x2" WELDED STRIP DOWN SIDE OF CHANNEL OR CHANNEL WALLS PER MANUFACTURER'S REQUIREMENTS.

**REVISIONS**

NO.	DATE	DESCRIPTION
1	01/28/2011	ISSUED FOR FOUNDATION PERMIT SUBMITTAL TO PPRBD (HEADWORKS)
2	04/08/2011	ISSUED FOR PREPARATION OF CMO
3	05/17/2011	ISSUED FOR PREPARATION OF CMO
4	06/20/2011	ISSUED FOR BUILDING PERMIT SUBMITTAL TO PPRBD (HEADWORKS BUILDING)
5	08/05/2011	ISSUED FOR CONSTRUCTION PER PPRBD BUILDING PERMIT #68510 (HEADWORKS BLDG)



**ARCHITECTURAL PLAN AND DETAILS**  
 HAROLD D. THOMPSON REGIONAL WATER RECLAMATION FACILITY  
 LOWER FOUNTAIN METROPOLITAN SEWAGE DISPOSAL DISTRICT

**DRAWN** MAM/SKC  
**DESIGNED** MAM  
**CHECKED** RJS  
**DATE** 2010  
**PROJECT NO.** 20166.352  
**GMS FILE NO.** 2599

**GMS, INC.**  
 CONSULTING ENGINEERS  
 611 N. WEBER, SUITE 300  
 COLORADO SPRINGS, COLORADO 80903

**SHEET** HW-2  
**OF** -

THIS DRAWING IS THE PROPERTY OF GMS, INC., AND IS NOT TO BE REPRODUCED, MODIFIED OR USED FOR ANY OTHER PROJECT OR EXTENSION OF THIS PROJECT EXCEPT BY AGREEMENT WITH THIS COMPANY.

2010 GMS, INC.