

HAROLD D. THOMPSON  
REGIONAL WATER RECLAMATION FACILITY  
FOR THE  
LOWER FOUNTAIN METROPOLITAN SEWAGE DISPOSAL DISTRICT  
NOVEMBER 2010  
SECONDARY CLARIFIER COMPLEX

DRAWING INDEX

DRAWINGS SUBMITTED TO PIKES PEAK REGIONAL BUILDING DEPARTMENT

SHEET NO.	DESCRIPTION
INFORMATIONAL SHEETS	
I-8	TITLE SHEET - SECONDARY CLARIFIER COMPLEX
I-9	SITE PLAN WITH BOUNDARY - SECONDARY CLARIFIER COMPLEX
I-10	STRUCTURAL GENERAL NOTES - SECONDARY CLARIFIER COMPLEX
GENERAL SHEETS	
G-3	COORDINATE LISTS
G-7	MASTER SITE AND GRADING PLAN
G-8	DETAILED SITE AND GRADING PLAN I
G-9	DETAILED SITE AND GRADING PLAN II
G-9A	DETAILED SITE AND GRADING PLAN IIA
G-10	DETAILED SITE AND GRADING PLAN III
G-11	DETAILED SITE AND GRADING PLAN IV
G-12	EROSION AND SEDIMENT CONTROL PLAN I
G-12A	EROSION AND SEDIMENT CONTROL PLAN II
G-12B	EROSION AND SEDIMENT CONTROL PLAN III
G-13	LOWER FOUNTAIN HEIGHTS PLAN AND PROFILE STA. 0+00 TO STA. 9+60
G-14	LOWER FOUNTAIN HEIGHTS PLAN AND PROFILE STA. 9+60 TO STA. 14+92.85
G-15	CULVERT "B" PLAN AND PROFILE
G-16	CULVERT "A" PLAN AND PROFILE AND SECTIONS
SECONDARY CLARIFIER COMPLEX	
SC-1	DRILLED PIER PLAN
SC-2	STRUCTURAL PLAN
SC-3	JOINTING PLAN
SC-4	STRUCTURAL SECTIONS AND DETAILS
SC-5	STRUCTURAL SECTIONS AND DETAILS
SC-6	DETAILED SITE PLAN
SC-7	PROCESS PIPING PLAN
SC-8	PROCESS EQUIPMENT PLAN
SC-9	PROCESS EQUIPMENT AND PIPING SECTIONS
SC-10	SECTIONS AND DETAILS
SC-11	SECTIONS AND DETAILS
DETAIL SHEETS	
DL-1	STANDARD STRUCTURAL DETAILS
DL-2	STRUCTURAL AND MASONRY DETAILS
DL-3	DETAILS AND SECTIONS
DL-4	DETAILS AND SECTIONS
ELECTRICAL SHEETS	
EL-1	GENERAL ELECTRICAL LEGEND
ED-1	FACILITY ELECTRICAL ONE-LINE DIAGRAM
ES-1	GENERAL ELECTRICAL SCHEDULES
ESP-1	MASTER ELECTRICAL SITE PLAN
ESC-1	ELECTRICAL ONE-LINE DIAGRAM - SECONDARY CLARIFIER COMPLEX
ESC-2	LIGHTING AND POWER PLAN - SECONDARY CLARIFIER COMPLEX
ESC-3	ELECTRICAL GROUNDING PLAN - SECONDARY CLARIFIER COMPLEX

PIKES PEAK REGIONAL BUILDING CODE INFORMATION

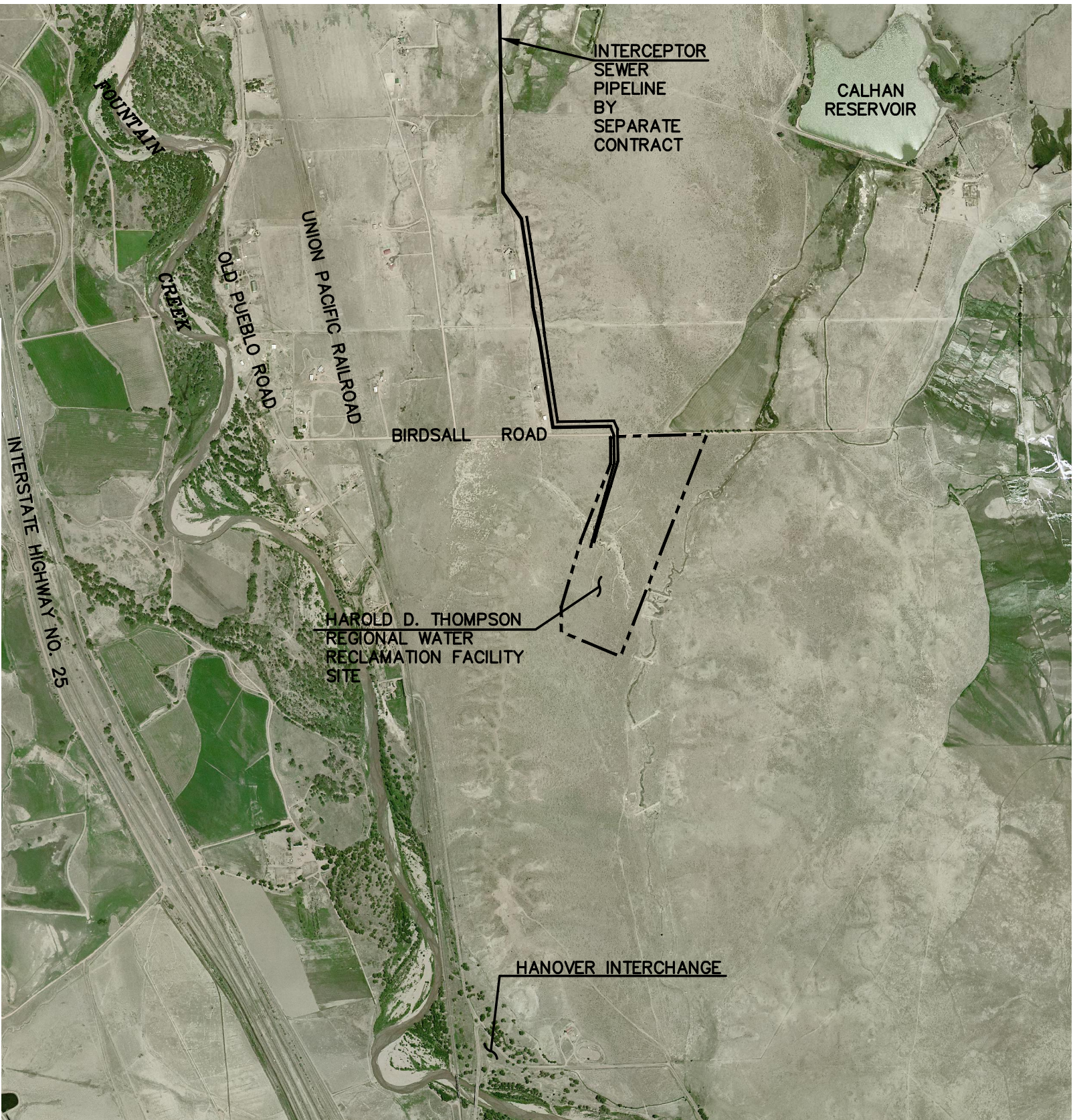
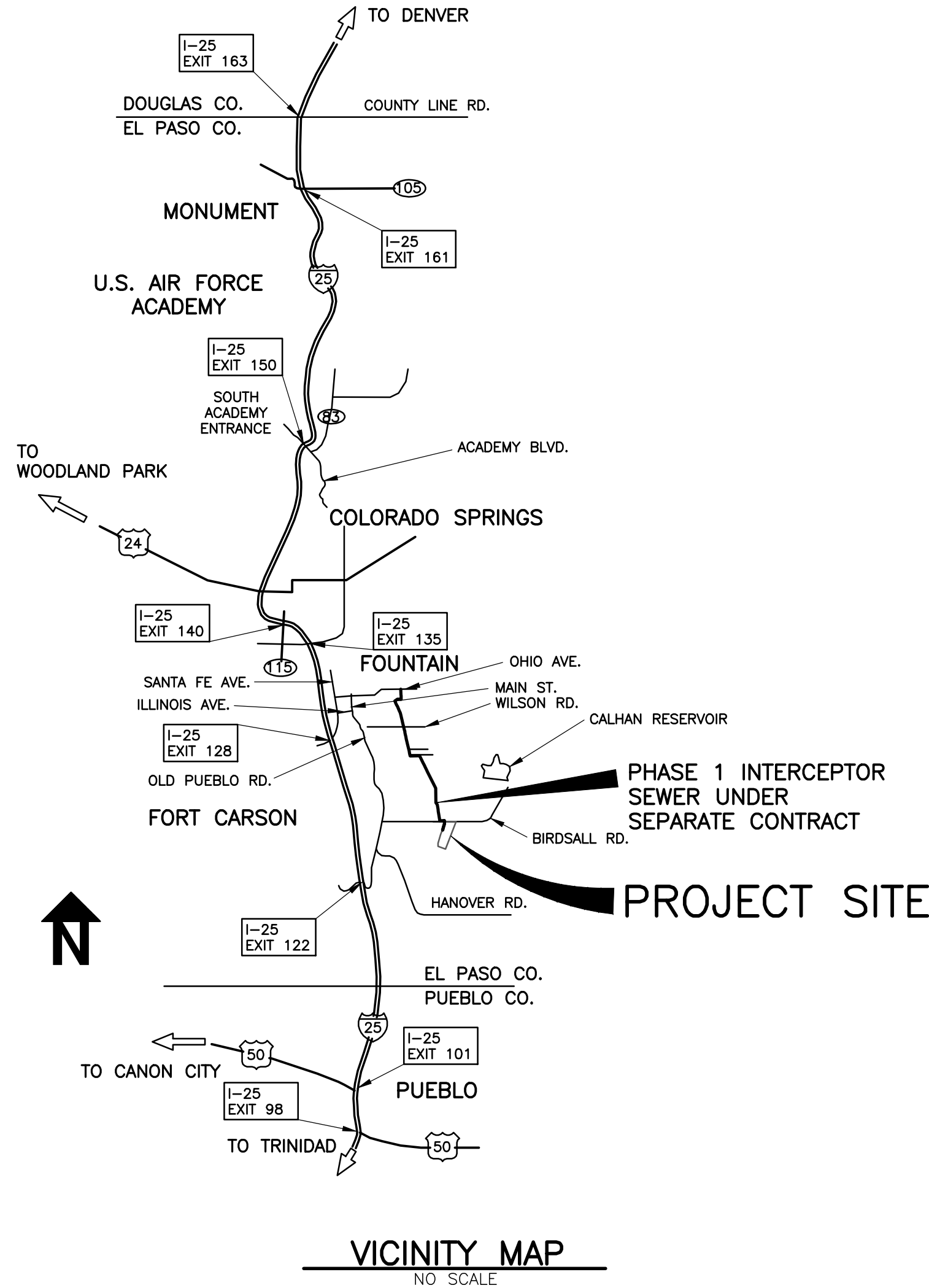
- THESE PLANS HAVE BEEN PREPARED AND DRAWN TO MEET THE REQUIREMENTS OF THE 2003 EDITION OF THE INTERNATIONAL BUILDING CODE, THE 2003 EDITION OF THE INTERNATIONAL PLUMBING CODE, THE 2008 EDITION OF THE NATIONAL ELECTRICAL CODE, THE 2003 EDITION OF THE INTERNATIONAL MECHANICAL CODE, AND THE 2005 PPRBD COMMERCIAL BUILDING CODES.
- SECONDARY CLARIFIER COMPLEX  
ADDRESS: 14681 LOWER FOUNTAIN HEIGHTS  
(BUILDING NO. ON SHEET I-9)  
STRUCTURE AREA: EACH TANK 3,109 S.F. TOTAL AREA = 6,218 S.F.  
USE AND OCCUPANCY: UTILITY, GROUP U  
CONSTRUCTION TYPE: V-B
- STRUCTURAL DESIGN NOTES:
  - SEE SHEET I-10 FOR ALL STRUCTURAL GENERAL DESIGN NOTES
- THE WASTEWATER TREATMENT FACILITY IS NOT ACCESSIBLE BY THE GENERAL PUBLIC. A CONTINUOUS PERIMETER SECURITY FENCE WILL BE INSTALLED AROUND THE ENTIRE FACILITY. ACCESS WILL BE CONTROLLED BY THE OPERATIONS PERSONNEL THROUGH AN ELECTRONIC GATE IN THE PERIMETER FENCE.
- THE FOLLOWING BUILDINGS ARE UNMANNED STRUCTURES. ACCESS TO THESE BUILDINGS ARE LIMITED TO OPERATION AND MAINTENANCE PERSONNEL ONLY.
  - HEADWORKS BUILDING
  - BLOWER BUILDING
  - EQUIPMENT MAINTENANCE AND STORAGE BUILDING
  - AERATION BASINS AND AEROBIC DIGESTER BASINS
  - SECONDARY CLARIFIER COMPLEX
  - PUMPING AND DISINFECTION BUILDING
  - BIO-SOLIDS HANDLING COMPLEX

**FACILITY ADDRESS:**  
14681 LOWER FOUNTAIN HEIGHTS  
(SEE SHEET I-9)  
FOUNTAIN, CO. 80817  
SEE SHEET I-9 FOR EACH  
SUBMITTAL ADDRESS

**EL PASO COUNTY ASSESSOR'S  
SCHEDULE NO.:** 56000-00-120

**LEGAL DESCRIPTION:**  
PARCEL DESCRIBED IN EL PASO COUNTY  
CLERK AND RECORDER RECORDS  
BOOK 5634, PAGE 355  
AND BOOK 565, PAGE 731  
(SEE SHEET I-9 FOR COMPLETE LEGAL  
DESCRIPTION)

GMS-FILE 2599  
PLOT STYLE FILE: 10560.DWG  
FILENAME: G:\P\NS00\2010\INFORMATIONAL DRAWINGS\I-8.DWG



SITE MAP

NO SCALE

REVISIONS		
NO.	DATE	DESCRIPTION
1	03/30/2011	ISSUED FOR BUILDING PERMIT SUBMITTAL TO PPRBD (SECONDARY CLARIFIER COMPLEX)
2	06/10/2011	ISSUED FOR CONSTRUCTION (SECONDARY CLARIFIER COMPLEX)

GMS, INC.  
611 NORTH WEBER STREET, SUITE 300  
COLORADO SPRINGS, COLORADO 80903

© 2010 GMS, INC.