

HAROLD D. THOMPSON REGIONAL WATER RECLAMATION FACILITY

FOR THE LOWER FOUNTAIN METROPOLITAN SEWAGE DISPOSAL DISTRICT

AUGUST 2011 PUMPING AND DISINFECTION BUILDING

DRAWING INDEX

DRAWINGS SUBMITTED TO PIKES PEAK REGIONAL BUILDING DEPARTMENT

SHEET NO.

DESCRIPTION

SHEET NO.

DESCRIPTION

INFORMATIONAL SHEETS

I-11 *	TITLE SHEET - PUMPING AND DISINFECTION BUILDING
I-12 *	SITE PLAN WITH BOUNDARY - PUMPING AND DISINFECTION BUILDING
I-13 *	STRUCTURAL GENERAL NOTES - PUMPING AND DISINFECTION BUILDING

GENERAL SHEETS

G-2	COORDINATE LISTS I
G-3	COORDINATE LISTS II
G-7	MASTER SITE AND GRADING PLAN
G-8	DETAILED SITE AND GRADING PLAN I
G-9	DETAILED SITE AND GRADING PLAN II
G-9A	DETAILED SITE AND GRADING PLAN IIA
G-10	DETAILED SITE AND GRADING PLAN III
G-11	DETAILED SITE AND GRADING PLAN IV
G-12	EROSION AND SEDIMENT CONTROL PLAN I
G-12A	EROSION AND SEDIMENT CONTROL PLAN II
G-12B	EROSION AND SEDIMENT CONTROL PLAN III
G-13	LOWER FOUNTAIN HEIGHTS PLAN AND PROFILE STA. 0+00 TO STA. 9+60
G-14	LOWER FOUNTAIN HEIGHTS PLAN AND PROFILE STA. 9+60 TO STA. 14+92.85
G-15	CULVERT "B" PLAN AND PROFILE
G-16	CULVERT "A" PLAN AND PROFILE AND SECTIONS

PUMPING AND DISINFECTION BUILDING SHEETS

PD-1 *	ARCHITECTURAL ELEVATIONS
PD-2 *	ARCHITECTURAL FLOOR PLAN AND DETAILS
PD-2A *	BUILDING SECTIONS AND DETAILS
PD-3 *	DRILLED PIER PLAN
PD-4 *	STRUCTURAL FOUNDATION PLAN
PD-4A *	PENETRATION PLAN
PD-5 *	STRUCTURAL FLOOR PLAN
PD-5A *	JOINTING PLAN
PD-6 *	STRUCTURAL SECTIONS
PD-7 *	STRUCTURAL SECTIONS
PD-8 *	STRUCTURAL SECTIONS
PD-9 *	STRUCTURAL SECTIONS AND DETAILS
PD-9A *	STRUCTURAL SECTIONS AND DETAILS
PD-10 *	DETAILED BUILDING SITE PLAN
PD-11 *	DISINFECTION AND NPW EQUIPMENT AND PIPING PLAN
PD-12 *	PUMP ROOM PROCESS PIPING PLAN
PD-13 *	PIPING PLAN AND SECTIONS
PD-14 *	PROCESS PIPING SECTIONS
PD-15 *	PROCESS PIPING SECTIONS
PD-16 *	PROCESS PIPING SECTIONS
PD-17 *	DRAIN AND VENT PLAN
PD-18 *	NON-POTABLE WATER PIPING PLAN

DETAIL SHEETS

DL-1	STANDARD STRUCTURAL DETAILS
DL-2	STRUCTURAL AND MASONRY DETAILS
DL-3	DETAILS AND SECTIONS
DL-4 *	DETAILS AND SECTIONS
DL-5 *	DETAILS AND SECTIONS
DL-6	DETAILS

ELECTRICAL SHEETS

EL-1 *	GENERAL ELECTRICAL LEGEND
ED-1 *	FACILITY ELECTRICAL ONE-LINE DIAGRAM
ES-1 *	GENERAL ELECTRICAL SCHEDULES I
ES-2 *	GENERAL ELECTRICAL SCHEDULES II
ES-3 *	GENERAL ELECTRICAL SCHEDULES III
ESP-1 *	MASTER ELECTRICAL SITE PLAN
EPD-1 *	ELECTRICAL ONE-LINE DIAGRAM - PUMPING AND DISINFECTION BUILDING
EPD-2 *	ELECTRICAL POWER PLAN - PUMPING AND DISINFECTION BUILDING
EPD-3 *	ELECTRICAL GROUNDING PLAN - PUMPING AND DISINFECTION BUILDING
EPD-4 *	ELECTRICAL FOUNDATION PLAN - PUMPING AND DISINFECTION BUILDING
EPD-5 *	ELECTRICAL FOUNDATION PLAN II - PUMPING AND DISINFECTION BUILDING
EPD-6	ELECTRICAL LIGHTING PLAN - PUMPING AND DISINFECTION BUILDING

MECHANICAL SHEETS

MSP-1 *	MASTER MECHANICAL SITE PLAN
MPD-1 *	MECHANICAL PLAN - PUMPING AND DISINFECTION BUILDING
MPD-2	MECHANICAL SCHEDULES - PUMPING AND DISINFECTION BUILDING

* INDICATES DRAWINGS ISSUED FOR PUMPING AND DISINFECTION
BUILDING VALUE ENGINEERING REVIEW AND COMMENT ON 01/25/12

PIKES PEAK REGIONAL BUILDING CODE INFORMATION

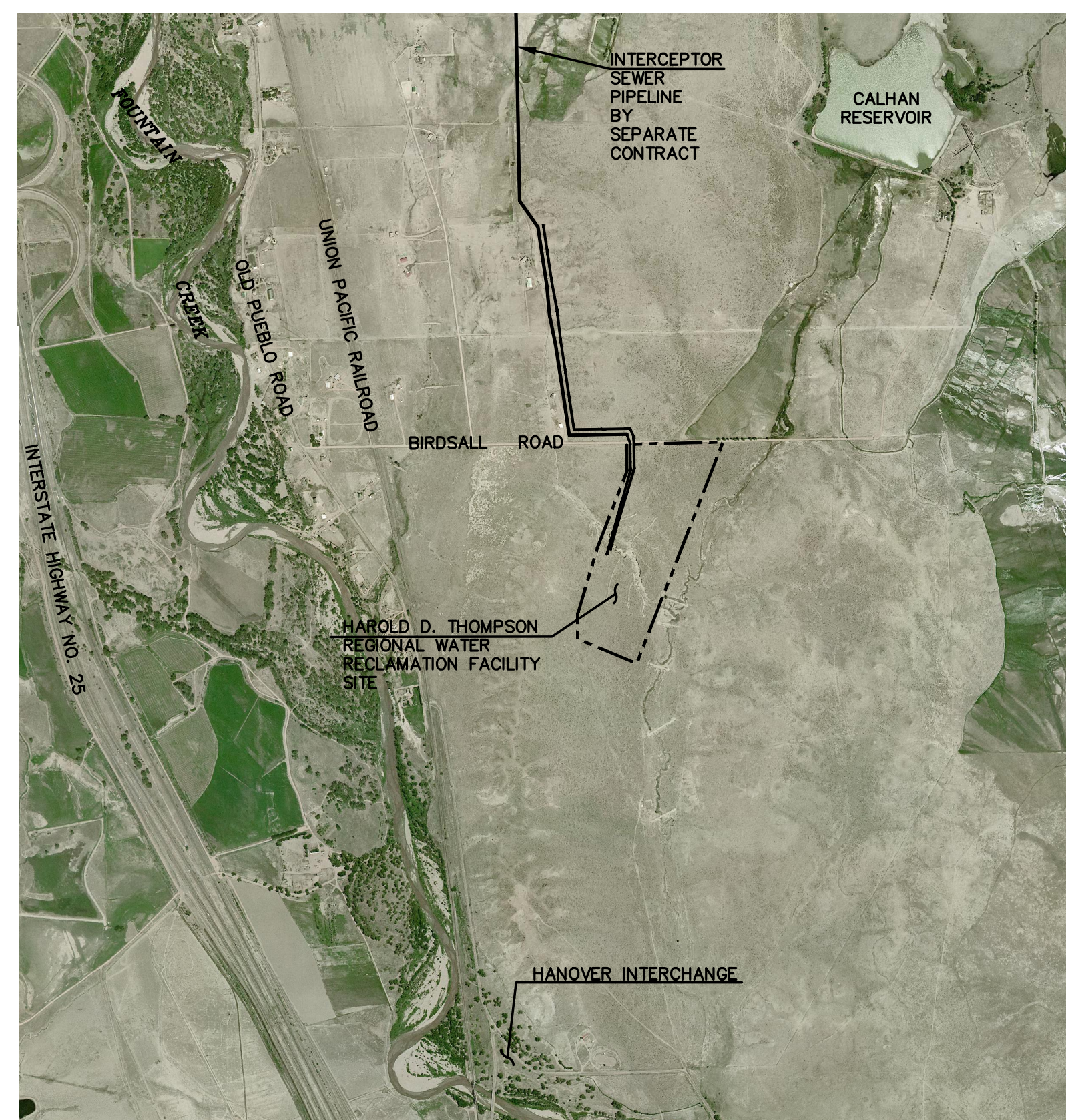
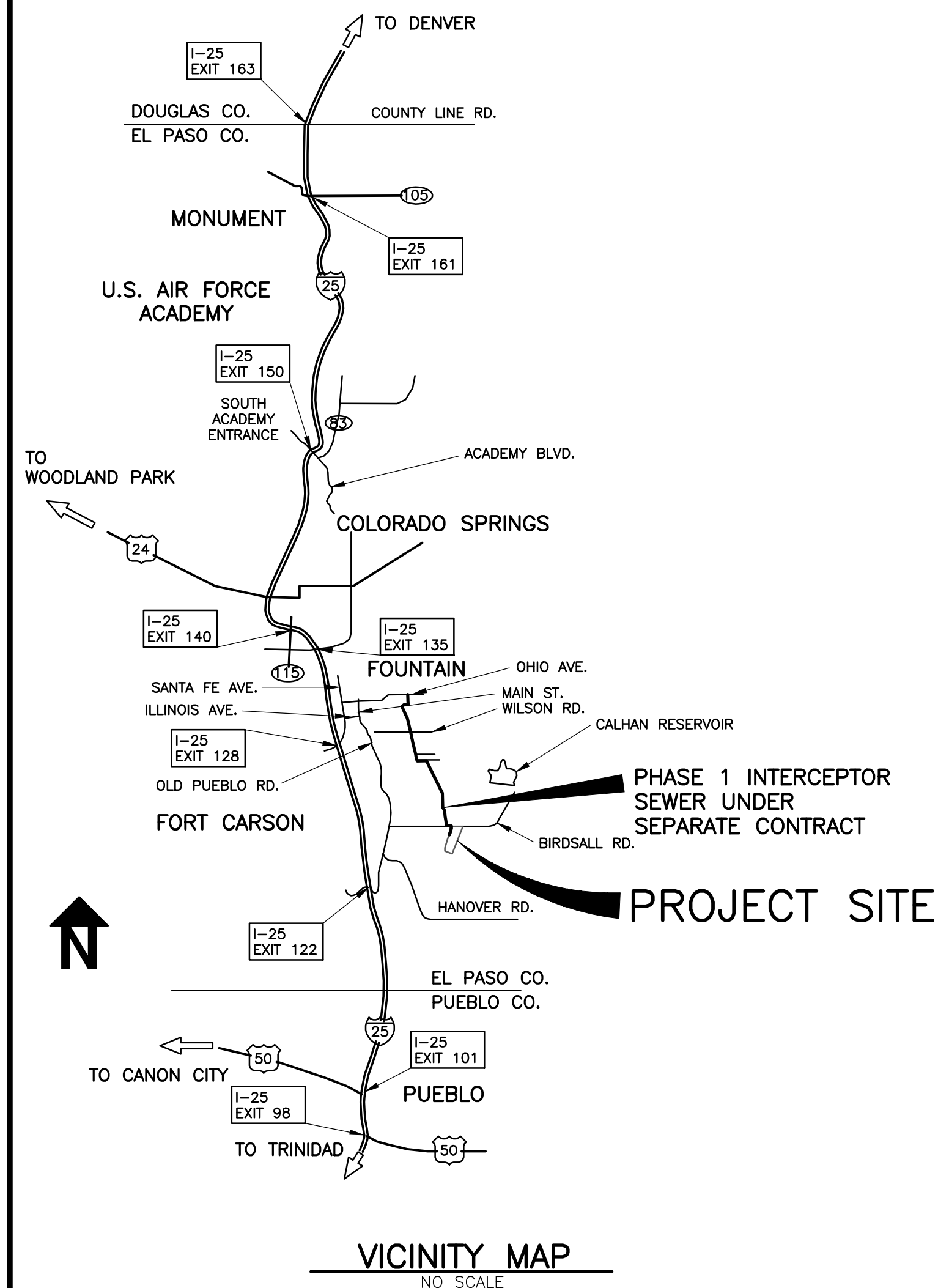
- THESE PLANS HAVE BEEN PREPARED AND DRAWN TO MEET THE REQUIREMENTS OF THE 2009 EDITION OF THE INTERNATIONAL BUILDING CODE, THE 2009 EDITION OF THE INTERNATIONAL PLUMBING CODE, THE 2008 EDITION OF THE NATIONAL ELECTRICAL CODE, THE 2009 EDITION OF THE INTERNATIONAL MECHANICAL CODE, AND THE 2011 PPRBD COMMERCIAL BUILDING CODES.
- PUMPING AND DISINFECTION BUILDING

ADDRESS: 14691 LOWER FOUNTAIN HEIGHTS
(BUILDING NO. G ON SHEET I-12)
STRUCTURE AREA: 5,060 S.F.
USE AND OCCUPANCY: LOW HAZARD FACTORY GROUP F-2
CONSTRUCTION TYPE: V-B
- STRUCTURAL DESIGN NOTES:
a. SEE SHEET I-13 FOR ALL STRUCTURAL GENERAL DESIGN NOTES
- THE WASTEWATER TREATMENT FACILITY IS NOT ACCESSIBLE BY THE GENERAL PUBLIC. A CONTINUOUS PERIMETER SECURITY FENCE WILL BE INSTALLED AROUND THE ENTIRE FACILITY. ACCESS WILL BE CONTROLLED BY THE OPERATIONS PERSONNEL THROUGH AN ELECTRONIC GATE IN THE PERIMETER FENCE.
- THE FOLLOWING BUILDINGS ARE UNMANNED STRUCTURES. ACCESS TO THESE BUILDINGS ARE LIMITED TO OPERATION AND MAINTENANCE PERSONNEL ONLY.
a. HEADWORKS BUILDING
b. BLOWER BUILDING
c. EQUIPMENT MAINTENANCE AND STORAGE BUILDING
d. AERATION BASINS AND AEROBIC DIGESTER BASINS
e. SECONDARY CLARIFIER COMPLEX
f. PUMPING AND DISINFECTION BUILDING
g. BIOSOLIDS HANDLING COMPLEX

FACILITY ADDRESS:
14691 LOWER FOUNTAIN HEIGHTS
(SEE SHEET I-12)
FOUNTAIN, CO. 80817
SEE SHEET I-12 FOR EACH
SUBMITTAL ADDRESS

**EL PASO COUNTY ASSESSOR'S
SCHEDULE NO.:** 56000-00-120

LEGAL DESCRIPTION:
PARCEL DESCRIBED IN EL PASO COUNTY
CLERK AND RECORDER RECORDS
BOOK 5634, PAGE 355
AND BOOK 5655, PAGE 731
(SEE SHEET I-12 FOR COMPLETE LEGAL
DESCRIPTION)



SITE MAP
NO SCALE

REVISIONS		
NO.	DATE	DESCRIPTION
1	09/22/2011	ISSUED FOR FOUNDATION PERMIT SUBMITTAL TO PPRBD (PUMPING AND DISINFECTION BLDG)
2	10/17/2011	CHANGE USE AND OCCUPANCY CLASSIFICATION TO F-2 PER PPRBD COMMENTS
3	10/17/2011	ISSUED FOR CONSTRUCTION PER PPRBD FOUNDATION PERMIT #88993 (PUMP AND DISINFECTION BLDG)
4	01/25/2012	ISSUED FOR PPD BUILDING VALUE ENGINEERING REVIEW AND COMMENTS
5	04/18/2012	ISSUED FOR BUILDING PERMIT SUBMITTAL TO PPRBD (PUMPING AND DISINFECTION BLDG)
6	05/21/2012	ISSUED FOR CONSTRUCTION PER PPRBD BLDG PERMIT #88993 (PUMP AND DISINFECTION BLDG)

GMS, INC.
611 NORTH WEBER STREET, SUITE 300
COLORADO SPRINGS, COLORADO 80903

© 2011 GMS, INC.

GMS-FILE 2599
PLOT STYLE FILE: 10560.ctb
FILENAME: G:\PPRBD\2011\INFORMATIONAL DRAWINGS\I1\I11.DWG

SHEET
I-11
OF
1