

HAROLD D. THOMPSON REGIONAL WATER RECLAMATION FACILITY

FOR THE
LOWER FOUNTAIN METROPOLITAN SEWAGE DISPOSAL DISTRICT

JULY 2011

EQUIPMENT MAINTENANCE AND STORAGE BUILDING

DRAWING INDEX

DRAWINGS SUBMITTED TO PIKES PEAK REGIONAL BUILDING DEPARTMENT

SHEET NO. DESCRIPTION

INFORMATIONAL SHEETS

I-17 TITLE SHEET - EQUIPMENT, MAINTENANCE AND STORAGE BUILDING
I-18 SITE PLAN WITH BOUNDARY - EQUIPMENT, MAINTENANCE AND STORAGE BUILDING
I-19 STRUCTURAL GENERAL NOTES - EQUIPMENT, MAINTENANCE AND STORAGE BUILDING

GENERAL SHEETS

G-2 COORDINATE LISTS I
G-3 COORDINATE LISTS II
G-7 MASTER SITE AND GRADING PLAN
G-8 DETAILED SITE AND GRADING PLAN I
G-9 DETAILED SITE AND GRADING PLAN II
G-9A DETAILED SITE AND GRADING PLAN IIA
G-10 DETAILED SITE AND GRADING PLAN III
G-11 DETAILED SITE AND GRADING PLAN IV
G-12 EROSION AND SEDIMENT CONTROL PLAN I
G-12A EROSION AND SEDIMENT CONTROL PLAN II
G-12B EROSION AND SEDIMENT CONTROL PLAN III
G-13 LOWER FOUNTAIN HEIGHTS PLAN AND PROFILE STA. 0+00 TO STA. 9+60
G-14 LOWER FOUNTAIN HEIGHTS PLAN AND PROFILE STA. 9+60 TO STA. 14+92.85
G-15 CULVERT "B" PLAN AND PROFILE
G-16 CULVERT "A" PLAN AND PROFILE AND SECTIONS

EQUIPMENT, MAINTENANCE AND STORAGE SHEETS

EM-1 ARCHITECTURAL ELEVATIONS
EM-2 ARCHITECTURAL FLOOR PLAN
EM-3 ARCHITECTURAL SCHEDULES, SECTIONS AND DETAILS
EM-4 FOUNDATION AND DRILLED PIER PLAN
EM-5 STRUCTURAL FLOOR PLAN
EM-6 STRUCTURAL SECTIONS
EM-7 STRUCTURAL SECTIONS AND DETAILS
EM-8 DETAILED BUILDING SITE PLAN
EM-9 PLUMBING PLAN
EM-10 CEILING FRAMING PLAN
EM-11 BUILDING SECTIONS AND DETAILS

DETAIL SHEETS

DL-1 STANDARD STRUCTURAL DETAILS
DL-2 STRUCTURAL AND MASONRY DETAILS
DL-3 DETAILS AND SECTIONS
DL-4 DETAILS AND SECTIONS

DRAWINGS SUBMITTED TO PIKES PEAK REGIONAL BUILDING DEPARTMENT

SHEET NO. DESCRIPTION

ELECTRICAL SHEETS

EL-1 GENERAL ELECTRICAL LEGEND
ED-1 FACILITY ELECTRICAL ONE-LINE DIAGRAM
ES-1 GENERAL ELECTRICAL SCHEDULES I
ES-2 GENERAL ELECTRICAL SCHEDULES II
ESP-1 MASTER ELECTRICAL SITE PLAN
ESP-2 ELECTRICAL SITE PLAN DETAILS
EEM-1 ELECTRICAL GROUNDING PLAN - EQUIPMENT MAINTENANCE AND STORAGE BUILDING
EEM-2 ELECTRICAL LIGHTING AND LIGHTNING PROTECTION PLAN
EEM-3 ELECTRICAL POWER PLAN

MECHANICAL SHEETS

MSP-1 MASTER MECHANICAL SITE PLAN
MEM-1 MECHANICAL PLAN
MEM-2 MECHANICAL SCHEDULES

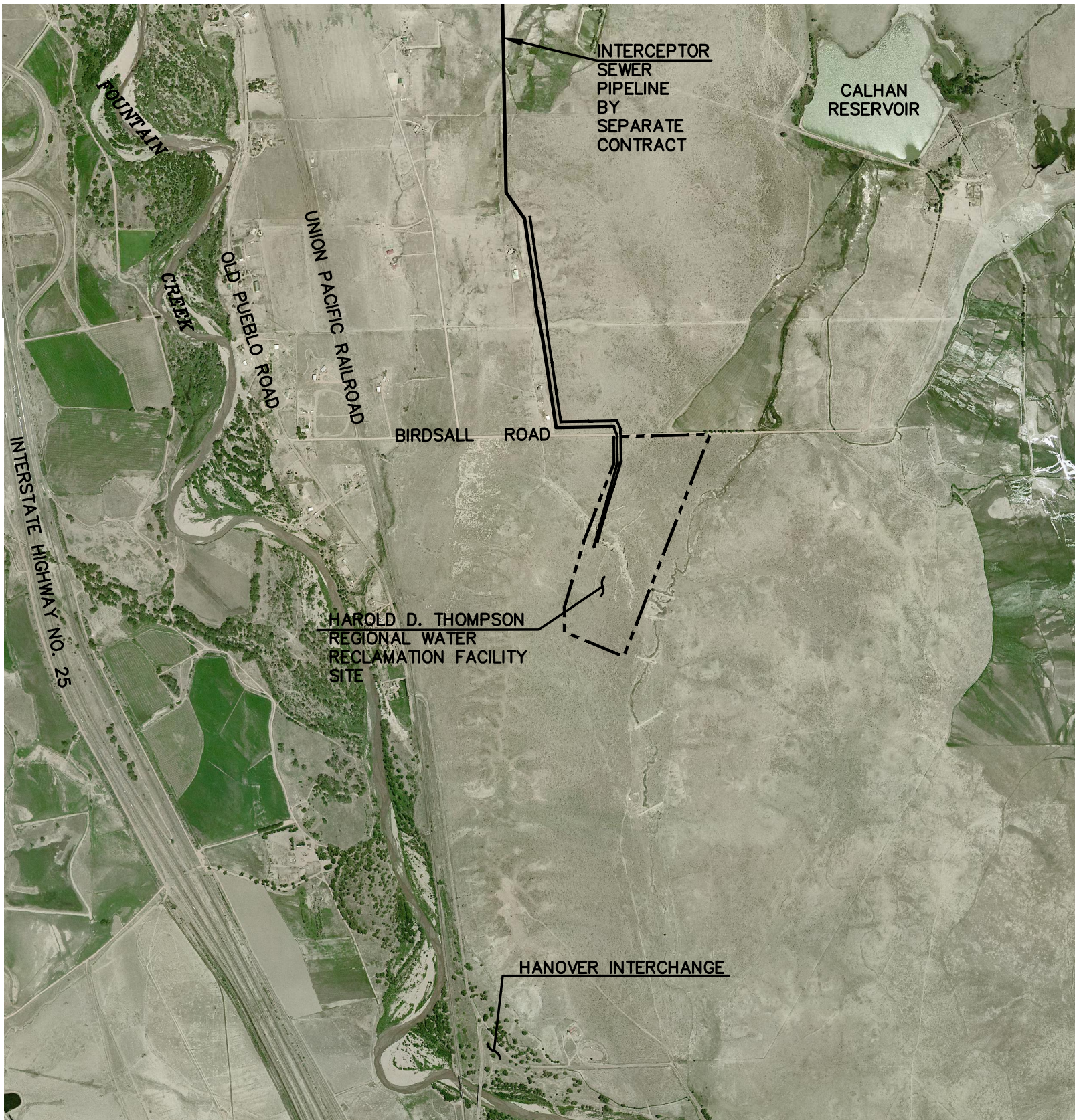
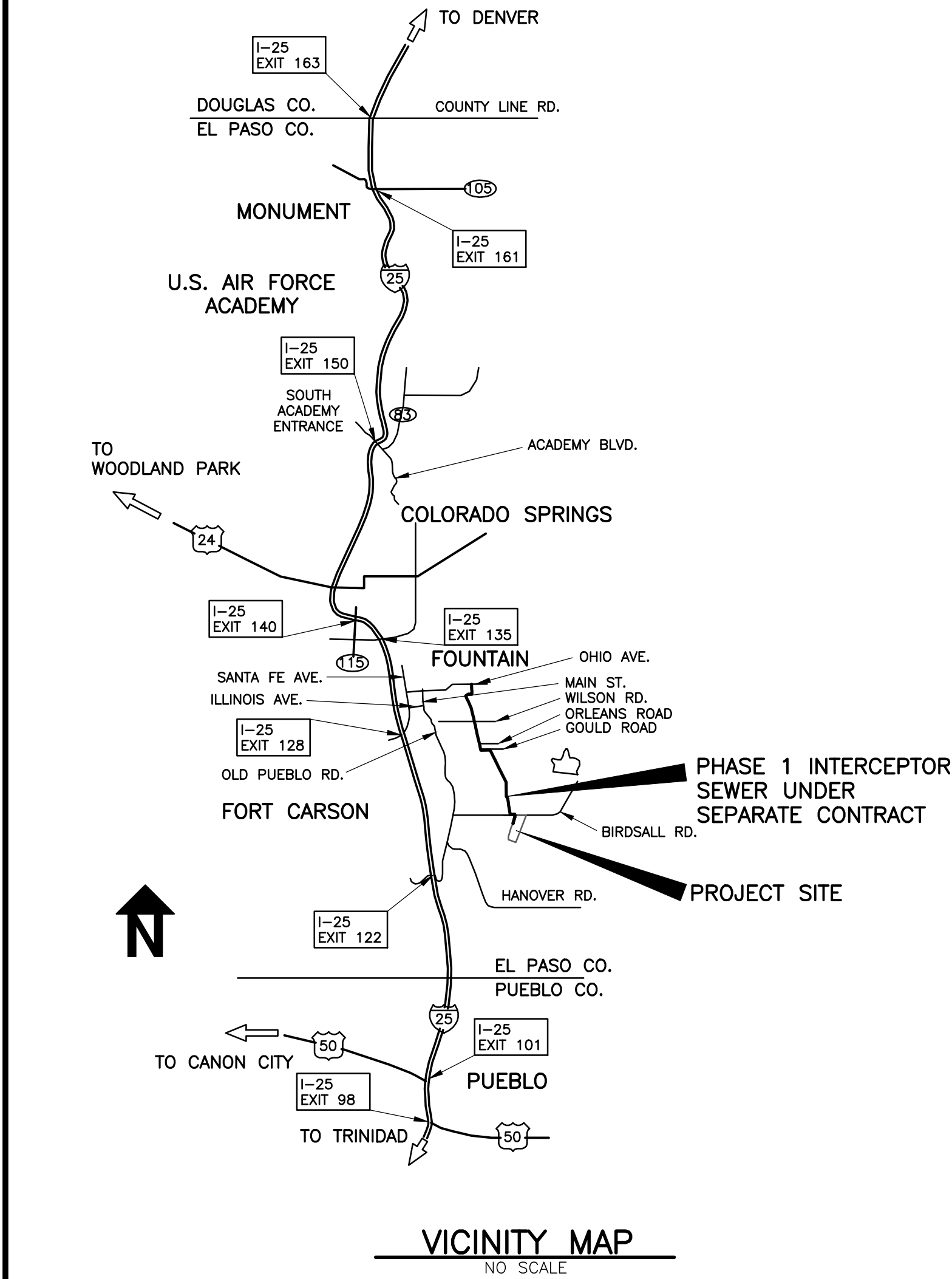
PIKES PEAK REGIONAL BUILDING CODE INFORMATION

1. THESE PLANS HAVE BEEN PREPARED AND DRAWN TO MEET THE REQUIREMENTS OF THE 2009 EDITION OF THE INTERNATIONAL BUILDING CODE, THE 2009 EDITION OF THE INTERNATIONAL PLUMBING CODE, THE 2008 EDITION OF THE NATIONAL ELECTRICAL CODE, THE 2009 EDITION OF THE INTERNATIONAL MECHANICAL CODE, AND THE 2011 PPRBD COMMERCIAL BUILDING CODES.
2. EQUIPMENT MAINTENANCE AND STORAGE BUILDING
ADDRESS: 14651 LOWER FOUNTAIN HEIGHTS
(BUILDING NO. D ON SHEET I-18)
STRUCTURE AREA: 3,468 S.F.
USE AND OCCUPANCY: FACTORY - LOW HAZARD, GROUP S-2
CONSTRUCTION TYPE: V-B
3. STRUCTURAL DESIGN NOTES:
a. SEE SHEET I-19 FOR ALL STRUCTURAL GENERAL DESIGN NOTES
4. THE WASTEWATER TREATMENT FACILITY IS NOT ACCESSIBLE BY THE GENERAL PUBLIC. A CONTINUOUS PERIMETER SECURITY FENCE WILL BE INSTALLED AROUND THE ENTIRE FACILITY. ACCESS WILL BE CONTROLLED BY THE OPERATIONS PERSONNEL THROUGH AN ELECTRONIC GATE IN THE PERIMETER FENCE.
5. THE FOLLOWING BUILDINGS ARE UNMANNED STRUCTURES. ACCESS TO THESE BUILDINGS ARE LIMITED TO OPERATION AND MAINTENANCE PERSONNEL ONLY.
a. HEADWORKS BUILDING
b. BLOWER BUILDING
c. EQUIPMENT MAINTENANCE AND STORAGE BUILDING
d. AERATION BASINS AND AEROBIC DIGESTER BASINS
e. SECONDARY CLARIFIER COMPLEX
f. PUMPING AND DISINFECTION BUILDING
g. BIOSOLIDS HANDLING COMPLEX

FACILITY ADDRESS:
14651 LOWER FOUNTAIN HEIGHTS
(SEE SHEET I-18)
FOUNTAIN, CO. 80817
SEE SHEET I-18 FOR EACH
SUBMITTAL ADDRESS

**EL PASO COUNTY ASSESSOR'S
SCHEDULE NO.:** 56000-00-120

LEGAL DESCRIPTION:
PARCEL DESCRIBED IN EL PASO COUNTY
CLERK AND RECORDER RECORDS
BOOK 5634, PAGE 355
AND BOOK 5655, PAGE 731
(SEE SHEET I-18 FOR COMPLETE LEGAL
DESCRIPTION)



REVISIONS		
NO.	DATE	DESCRIPTION
1	07/28/2011	ISSUED FOR FOUNDATION PERMIT SUBMITTAL TO PPRBD (EQUIP., MAINT. AND STO. BLDG.)
2	08/24/2011	ISSUED FOR CONSTRUCTION PER PPRBD FSTN PERMIT #H93002 (EQUIP., MAINT. AND STO. BLDG.)
3	11/23/2011	ISSUED FOR BUILDING PERMIT SUBMITTAL TO PPRBD (EQUIP., MAINT. & STOR. BLDG.)
4	11/23/2011	ISSUED FOR BUILDING PERMIT SUBMITTAL TO PPRBD (EQUIP., MAINT. & STOR. BLDG.)
5	11/29/2011	REVISED PER PPRBD COMMENTS
6	01/09/2012	ISSUED FOR CONSTRUCTION PER PPRBD BUILDING PERMIT #H93002 (EQUIP., MAINT. & STO. BLDG.)

GMS, INC.
611 NORTH WEBER STREET, SUITE 300
COLORADO SPRINGS, COLORADO 80903

© 2011 GMS, INC.

6 DSD FILE
NO. U-08-006

GMS-FILE 2599
PLOT STYLE FILE: 10560.CTB
FILENAME: G:\P\MSDD\2016\INFORMATIONAL DRAWINGS\17\17.DWG

SHEET
I-17
OF
-