

HAROLD D. THOMPSON REGIONAL WATER RECLAMATION FACILITY

FOR THE
LOWER FOUNTAIN METROPOLITAN SEWAGE DISPOSAL DISTRICT

JUNE 2012
OPERATIONS BUILDING

DRAWING INDEX

DRAWINGS SUBMITTED TO PIKES PEAK REGIONAL BUILDING DEPARTMENT

SHEET NO. DESCRIPTION

INFORMATIONAL SHEETS

I-20 TITLE SHEET - OPERATIONS BUILDING
I-21 SITE PLAN WITH BOUNDARY - OPERATIONS BUILDING
I-22 STRUCTURAL GENERAL NOTES - OPERATIONS BUILDING

GENERAL SHEETS

G-2 COORDINATE LISTS I
G-3 COORDINATE LISTS II
G-7 MASTER SITE AND GRADING PLAN
G-8 DETAILED SITE AND GRADING PLAN I
G-9 DETAILED SITE AND GRADING PLAN II
G-9A DETAILED SITE AND GRADING PLAN IIA
G-10 DETAILED SITE AND GRADING PLAN III
G-11 DETAILED SITE AND GRADING PLAN IV
G-12 EROSION AND SEDIMENT CONTROL PLAN I
G-12A EROSION AND SEDIMENT CONTROL PLAN II
G-12B EROSION AND SEDIMENT CONTROL PLAN III
G-13 LOWER FOUNTAIN HEIGHTS PLAN AND PROFILE STA. 0+00 TO STA. 9+60
G-14 LOWER FOUNTAIN HEIGHTS PLAN AND PROFILE STA. 9+60 TO STA. 14+92.85
G-15 CULVERT "B" PLAN AND PROFILE
G-16 CULVERT "A" PLAN AND PROFILE AND SECTIONS

OPERATIONS BUILDING SHEETS

OP-1 ARCHITECTURAL ELEVATIONS
OP-2 ARCHITECTURAL FLOOR PLAN
OP-3 ARCHITECTURAL SCHEDULES, SECTIONS AND DETAILS
OP-4 OPERATIONS BUILDING CASEWORK, ARCHITECTURAL PLAN AND ELEVATIONS, AND SCHEDULES
OP-5 FOUNDATION AND DRILLED PIER PLAN
OP-6 STRUCTURAL SECTIONS
OP-7 STRUCTURAL SECTIONS AND DETAILS
OP-8 STRUCTURAL SECTIONS AND DETAILS
OP-9 DETAILED BUILDING SITE PLAN

EQUIPMENT, MAINTENANCE AND STORAGE SHEETS

EM-3 ARCHITECTURAL SCHEDULES, SECTIONS AND DETAILS
EM-4 FOUNDATION AND DRILLED PIER PLAN
EM-9 PLUMBING PLAN

DETAIL SHEETS

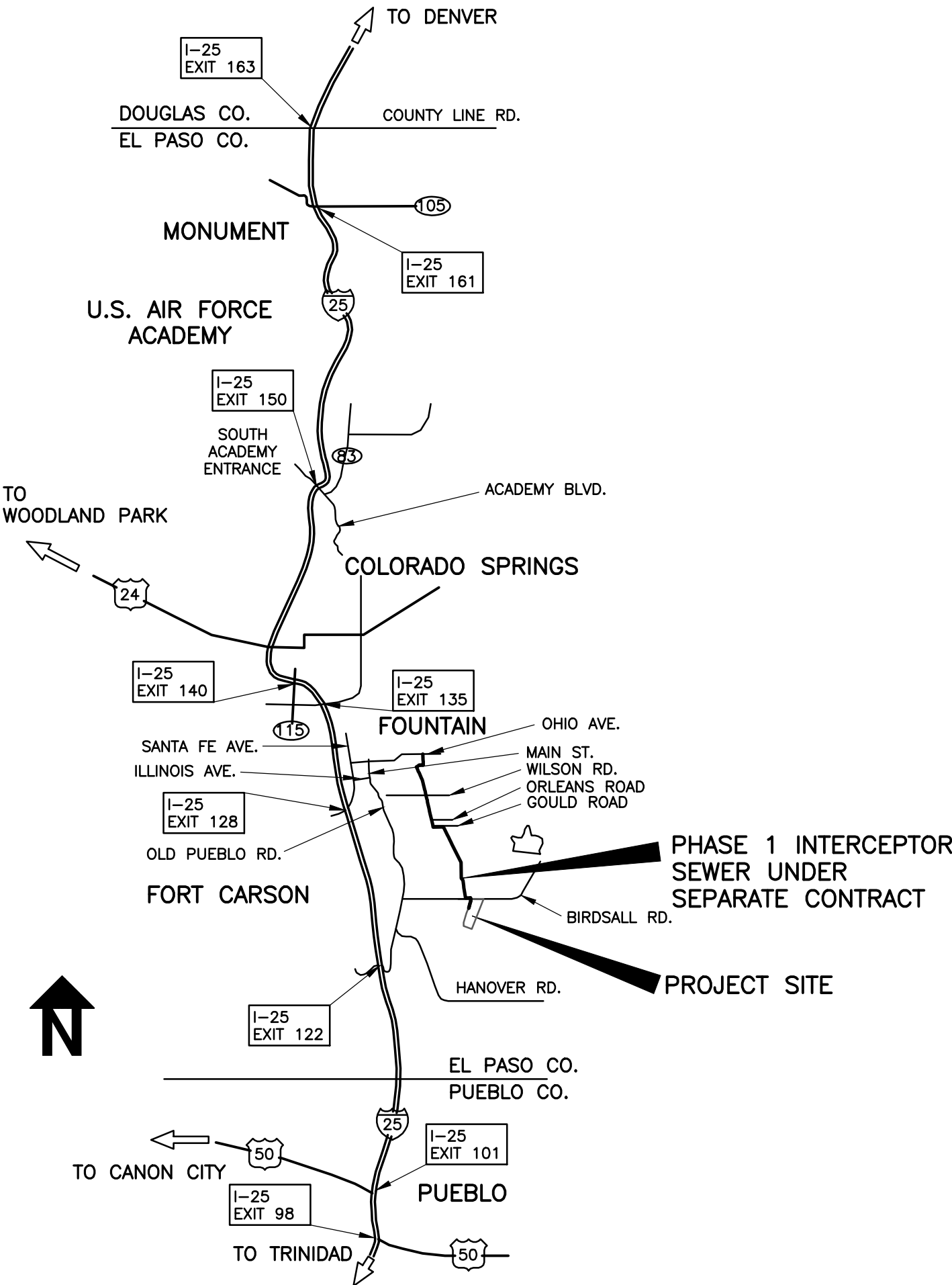
DL-1 STANDARD STRUCTURAL DETAILS
DL-2 STRUCTURAL AND MASONRY DETAILS
DL-3 DETAILS AND SECTIONS
DL-4 DETAILS AND SECTIONS
DL-5 DETAILS AND SECTIONS
DL-6 DETAILS

ELECTRICAL SHEETS

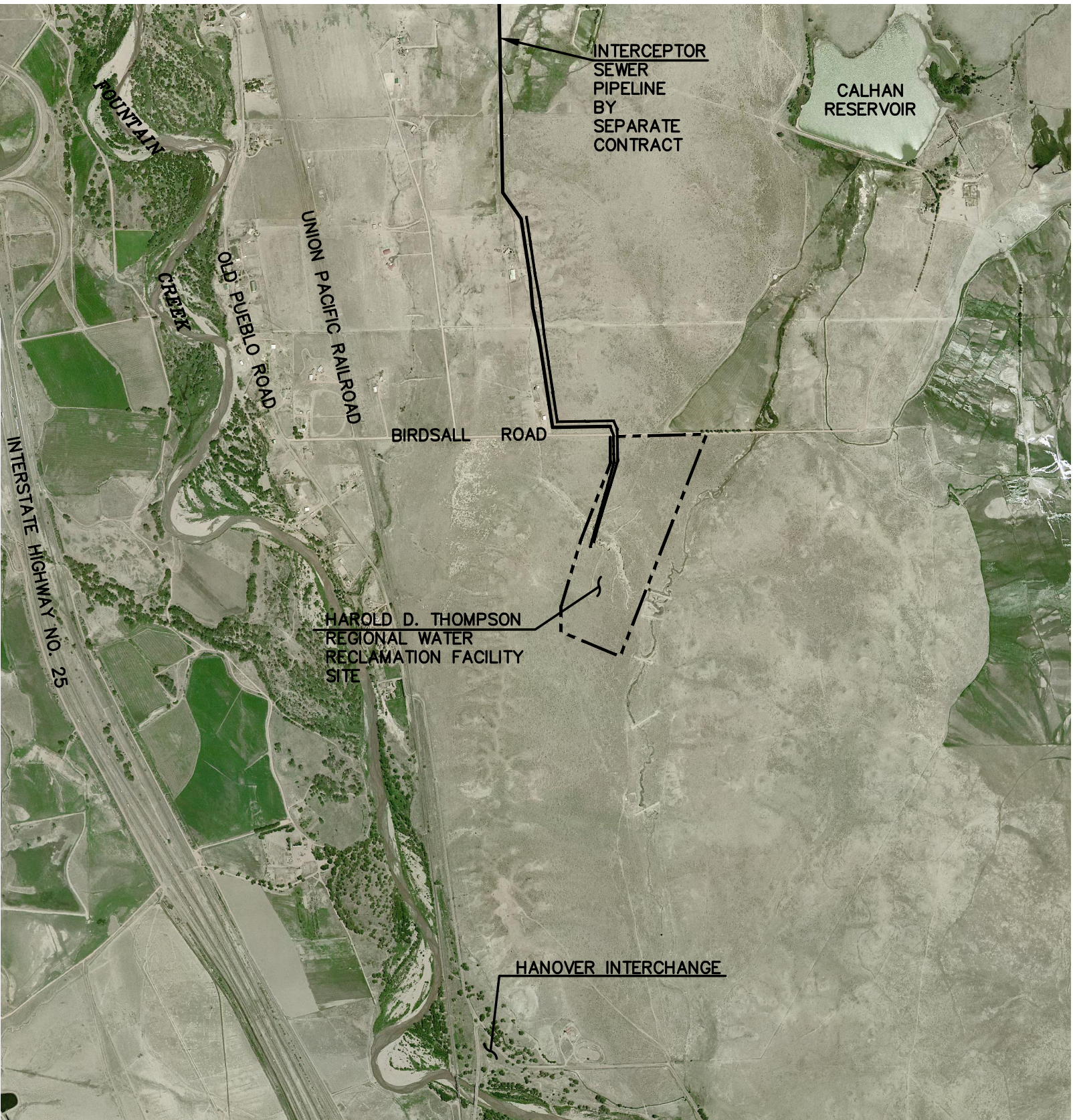
EL-1 GENERAL ELECTRICAL LEGEND
ED-1 FACILITY ELECTRICAL ONE-LINE DIAGRAM
ES-1 GENERAL ELECTRICAL SCHEDULES I
ES-2 GENERAL ELECTRICAL SCHEDULES II
ES-4 GENERAL ELECTRICAL SCHEDULES IV
ESP-1 MASTER ELECTRICAL SITE PLAN
EOP-1 ELECTRICAL LIGHTING AND LIGHTNING PROTECTION PLAN
EOP-2 ELECTRICAL POWER AND SIGNAL PLAN

MECHANICAL SHEETS

MSP-1 MASTER MECHANICAL SITE PLAN
MOP-1A MECHANICAL NOTES AND LEGEND
MOP-1 GAS PLAN
MOP-2 MECHANICAL PLAN
MOP-3 MECHANICAL SCHEDULES
OP-P1 PLUMBING LEGEND AND NOTES
OP-P2 PLUMBING WATER AND GAS PLAN
OP-P3 PLUMBING SANITARY AND VENT PLAN
OP-P4 PLUMBING DETAILS
OP-P5 PLUMBING SCHEDULES



VICINITY MAP
NO SCALE



SITE MAP
NO SCALE

PIKES PEAK REGIONAL BUILDING CODE INFORMATION

- THESE PLANS HAVE BEEN PREPARED AND DRAWN TO MEET THE REQUIREMENTS OF THE 2009 EDITION OF THE INTERNATIONAL BUILDING CODE, THE 2009 EDITION OF THE INTERNATIONAL PLUMBING CODE, THE 2008 EDITION OF THE NATIONAL ELECTRICAL CODE, THE 2009 EDITION OF THE INTERNATIONAL MECHANICAL CODE, AND THE 2011 PPRBD COMMERCIAL BUILDING CODES.
- OPERATIONS BUILDING
ADDRESS: 14651 LOWER FOUNTAIN HEIGHTS
(BUILDING NO. 1 ON SHEET I-21)
STRUCTURE AREA: 1,989 S.F.
USE AND OCCUPANCY: BUSINESS, GROUP B
CONSTRUCTION TYPE: V-B
- STRUCTURAL DESIGN NOTES:
a. SEE SHEET I-22 FOR ALL STRUCTURAL GENERAL DESIGN NOTES
- THE WASTEWATER TREATMENT FACILITY IS NOT ACCESSIBLE BY THE GENERAL PUBLIC. A CONTINUOUS PERIMETER SECURITY FENCE WILL BE INSTALLED AROUND THE ENTIRE FACILITY. ACCESS WILL BE CONTROLLED BY THE OPERATIONS PERSONNEL THROUGH AN ELECTRONIC GATE IN THE PERIMETER FENCE.
- THE FOLLOWING BUILDINGS ARE UNMANNED STRUCTURES. ACCESS TO THESE BUILDINGS ARE LIMITED TO OPERATION AND MAINTENANCE PERSONNEL ONLY.
 - HEADWORKS BUILDING
 - BLOWER BUILDING
 - EQUIPMENT MAINTENANCE AND STORAGE BUILDING
 - AERATION BASINS AND AEROBIC DIGESTER BASINS
 - SECONDARY CLARIFIER COMPLEX
 - PUMPING AND DISINFECTION BUILDING
 - BIOSOLIDS HANDLING COMPLEX

FACILITY ADDRESS:
14651 LOWER FOUNTAIN HEIGHTS
(SEE SHEET I-21)
FOUNTAIN, CO. 80817
SEE SHEET I-21 FOR EACH
SUBMITTAL ADDRESS

**EL PASO COUNTY ASSESSOR'S
SCHEDULE NO.:** 56000-00-120

LEGAL DESCRIPTION:
PARCEL DESCRIBED IN EL PASO COUNTY
CLERK AND RECORDER RECORDS
BOOK 5634, PAGE 355
AND BOOK 5655, PAGE 731
(SEE SHEET I-21 FOR COMPLETE LEGAL
DESCRIPTION)

GMS, INC.
611 NORTH WEBER STREET, SUITE 300
COLORADO SPRINGS, COLORADO 80903
© 2012, GMS, INC.

REVISIONS		
NO.	DATE	DESCRIPTION
1	06/29/2012	ISSUED FOR BUILDING PERMIT SUBMITTAL TO PPRBD (OPERATIONS BUILDING)
2	08/15/2012	ISSUED FOR CONSTRUCTION PER PPRBD BUILDING PERMIT #135220 (OPERATIONS BLDG)