

# HAROLD D. THOMPSON REGIONAL WATER RECLAMATION FACILITY

## FOR THE LOWER FOUNTAIN METROPOLITAN SEWAGE DISPOSAL DISTRICT

### OCTOBER 2012 BIOSOLIDS HANDLING COMPLEX

#### DRAWING INDEX

#### DRAWINGS SUBMITTED TO PIKES PEAK REGIONAL BUILDING DEPARTMENT

#### SHEET NO. DESCRIPTION

#### INFORMATIONAL SHEETS

I-23 TITLE SHEET - BIOSOLIDS HANDLING COMPLEX  
I-24 SITE PLAN WITH BOUNDARY - BIOSOLIDS HANDLING COMPLEX  
I-25 STRUCTURAL GENERAL NOTES - BIOSOLIDS HANDLING COMPLEX

#### GENERAL SHEETS

G-2 COORDINATE LISTS I  
G-3 COORDINATE LISTS II  
G-7 MASTER SITE AND GRADING PLAN  
G-8 DETAILED SITE AND GRADING PLAN I  
G-9 DETAILED SITE AND GRADING PLAN II  
G-9A DETAILED SITE AND GRADING PLAN IIIA  
G-10 DETAILED SITE AND GRADING PLAN III  
G-11 DETAILED SITE AND GRADING PLAN IV  
G-12 EROSION AND SEDIMENT CONTROL PLAN I  
G-12A EROSION AND SEDIMENT CONTROL PLAN II  
G-12B EROSION AND SEDIMENT CONTROL PLAN III  
G-13 LOWER FOUNTAIN HEIGHTS PLAN AND PROFILE STA. 0+00 TO STA. 9+60  
G-14 LOWER FOUNTAIN HEIGHTS PLAN AND PROFILE STA. 9+60 TO STA. 14+92.85  
G-15 CULVERT "B" PLAN AND PROFILE  
G-16 CULVERT "A" PLAN AND PROFILE AND SECTIONS

#### ELECTRICAL SHEETS

EL-1 GENERAL ELECTRICAL LEGEND  
ED-1 FACILITY ELECTRICAL ONE-LINE DIAGRAM  
ES-1 GENERAL ELECTRICAL SCHEDULES I  
ES-2 GENERAL ELECTRICAL SCHEDULES II  
ES-3 GENERAL ELECTRICAL SCHEDULES III  
ES-4 GENERAL ELECTRICAL SCHEDULES IV  
ESP-1 MASTER ELECTRICAL SITE PLAN  
EBH-1 ELECTRICAL POWER AND SIGNAL PLANS - BIOSOLIDS HANDLING COMPLEX  
EBH-2 ELECTRIC LIGHTING AND LIGHTNING PROTECTION PLANS - BIOSOLIDS HANDLING COMPLEX

#### MECHANICAL SHEETS

MSP-1 MASTER MECHANICAL SITE PLAN  
MBH-1 MECHANICAL NOTES AND LEGENDS  
MBH-2 MECHANICAL PLAN - BIOSOLIDS HANDLING COMPLEX  
MBH-3 MECHANICAL DETAILS - BIOSOLIDS HANDLING COMPLEX  
MBH-4 MECHANICAL DETAILS - BIOSOLIDS HANDLING COMPLEX

#### BIOSOLIDS HANDLING COMPLEX SHEETS

BH-1 ARCHITECTURAL ELEVATIONS  
BH-2 ARCHITECTURAL PLAN AND DETAILS  
BH-3 FOUNDATION PLAN  
BH-4 STRUCTURAL FLOOR PLAN  
BH-4A JOINTING PLAN  
BH-5 STRUCTURAL SECTIONS AND DETAILS  
BH-6 PROCESS EQUIPMENT AND PIPING PLAN AND DETAILS  
BH-7 PROCESS EQUIPMENT AND PIPING SECTIONS  
BH-8 PROCESS EQUIPMENT AND PIPING SECTIONS  
BH-9 DRAIN AND VENT PLAN  
BH-10 NON-POTABLE WATER PLAN  
BH-11 DETAILED BUILDING SITE PLAN

#### DETAIL SHEETS

DL-1 STANDARD STRUCTURAL DETAILS  
DL-2 STRUCTURAL AND MASONRY DETAILS  
DL-3 DETAILS AND SECTIONS  
DL-4 DETAILS AND SECTIONS  
DL-5 DETAILS AND SECTIONS  
DL-6 DETAILS  
DL-7 DETAILS

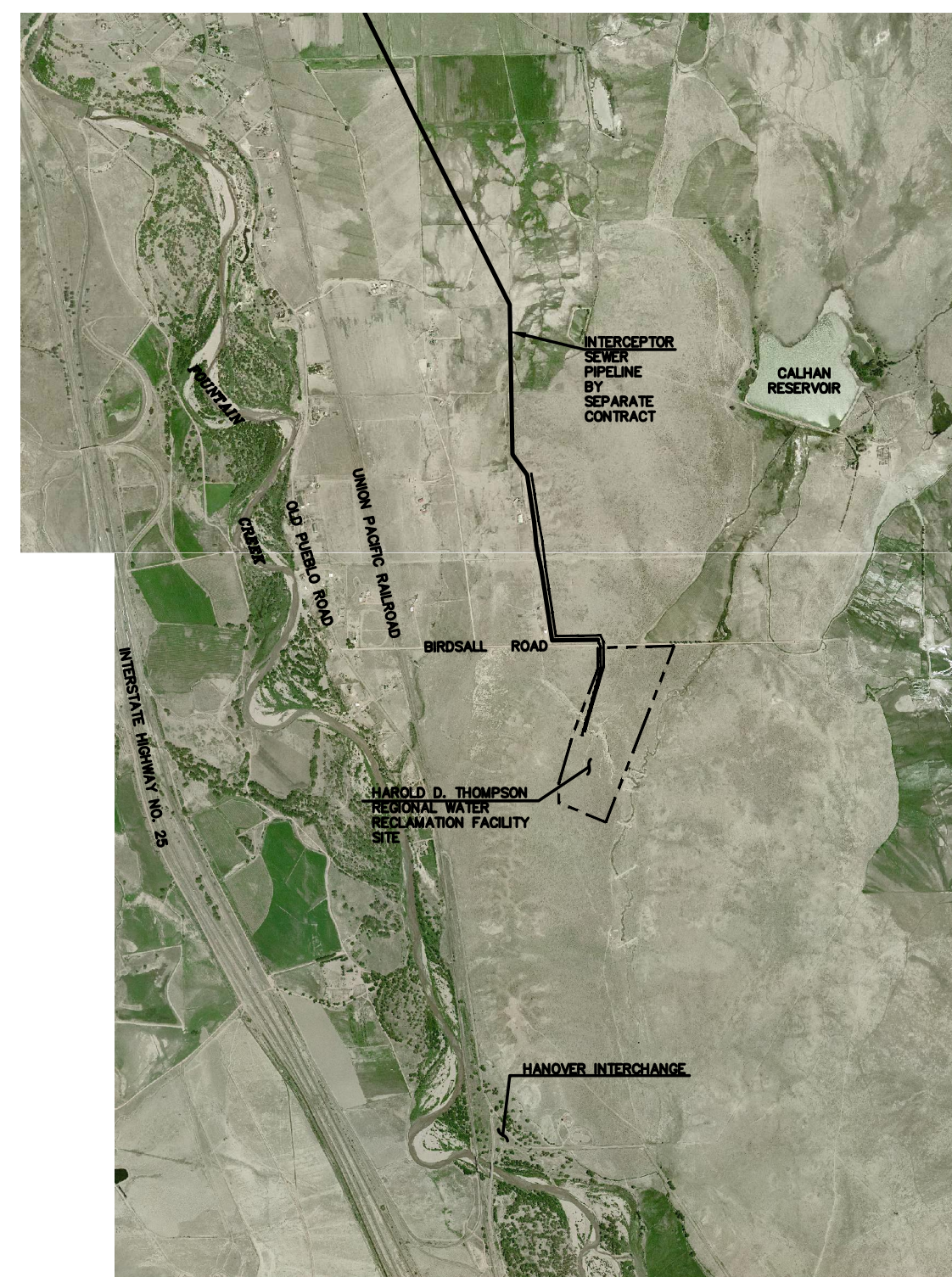
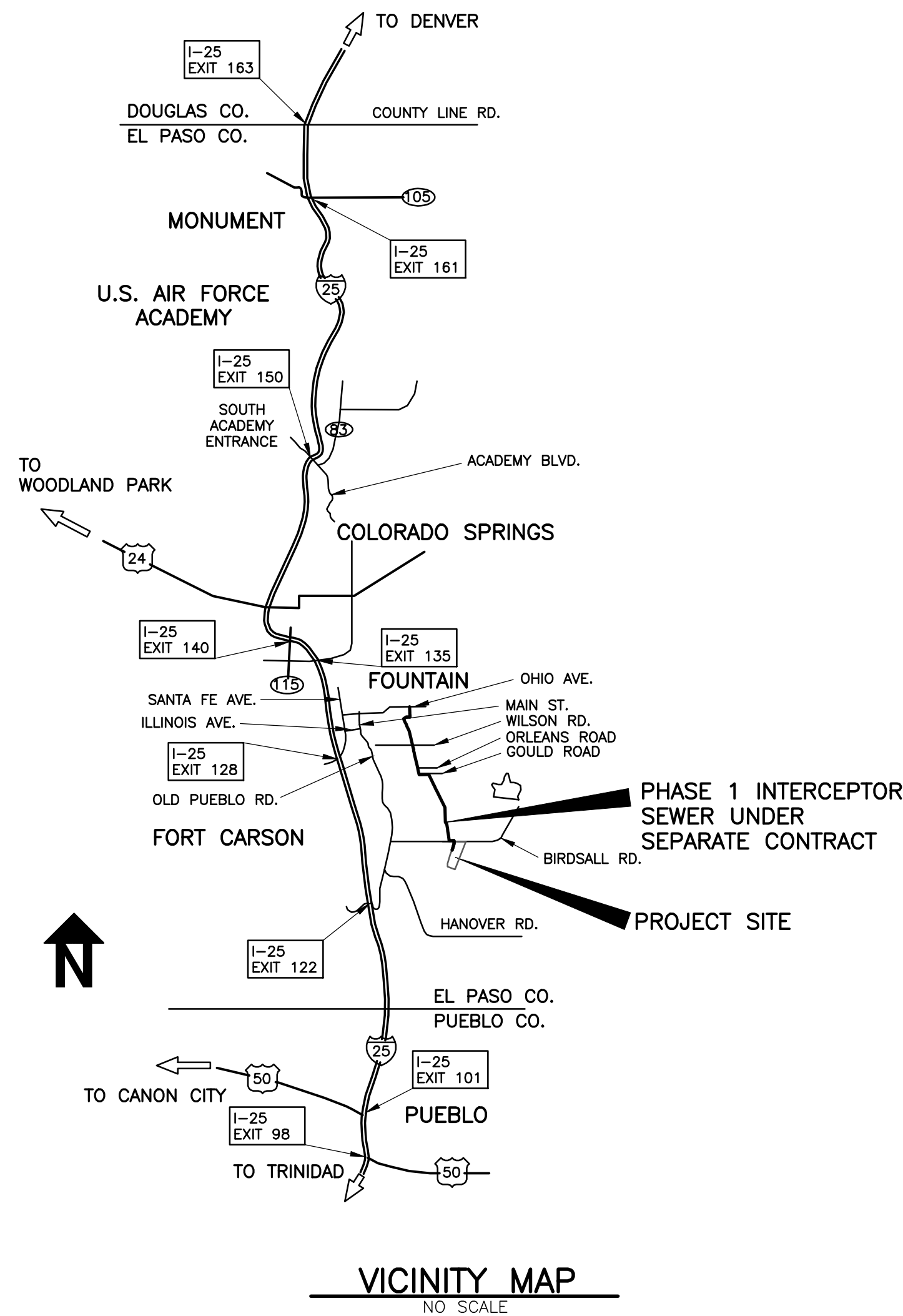
#### PIKES PEAK REGIONAL BUILDING CODE INFORMATION

- THESE PLANS HAVE BEEN PREPARED AND DRAWN TO MEET THE REQUIREMENTS OF THE 2009 EDITION OF THE INTERNATIONAL BUILDING CODE, THE 2009 EDITION OF THE INTERNATIONAL PLUMBING CODE, THE 2011 EDITION OF THE NATIONAL ELECTRICAL CODE, THE 2009 EDITION OF THE INTERNATIONAL MECHANICAL CODE, AND THE 2011 PPRBD COMMERCIAL BUILDING CODES.
- BIOSOLIDS HANDLING COMPLEX  
ADDRESS: 14631 LOWER FOUNTAIN HEIGHTS  
(BUILDING NO. H ON SHEET I-24)  
STRUCTURE AREA:  
ENCLOSED AND HEATED AREA = 2,920 SF  
OPEN BAY AREA = 1,040 SF  
TOTAL AREA = 3,960 SF  
USE AND OCCUPANCY: FACTORY, LOW HAZARD - GROUP F-2  
CONSTRUCTION TYPE: V-B
- STRUCTURAL DESIGN NOTES:  
a. SEE SHEET I-25 FOR ALL STRUCTURAL GENERAL DESIGN NOTES
- THE WASTEWATER TREATMENT FACILITY IS NOT ACCESSIBLE BY THE GENERAL PUBLIC. A CONTINUOUS PERIMETER SECURITY FENCE WILL BE INSTALLED AROUND THE ENTIRE FACILITY. ACCESS WILL BE CONTROLLED BY THE OPERATIONS PERSONNEL THROUGH AN ELECTRONIC GATE IN THE PERIMETER FENCE.
- THE FOLLOWING BUILDINGS ARE UNMANNED STRUCTURES. ACCESS TO THESE BUILDINGS ARE LIMITED TO OPERATION AND MAINTENANCE PERSONNEL ONLY.  
a. HEADWORKS BUILDING  
b. BLOWER BUILDING  
c. EQUIPMENT MAINTENANCE AND STORAGE BUILDING  
d. AERATION BASINS AND AEROBIC DIGESTER BASINS  
e. SECONDARY CLARIFIER COMPLEX  
f. PUMPING AND DISINFECTION BUILDING  
g. BIOSOLIDS HANDLING COMPLEX

**FACILITY ADDRESS:**  
14631 LOWER FOUNTAIN HEIGHTS  
(SEE SHEET I-24)  
FOUNTAIN, CO. 80817  
SEE SHEET I-24 FOR EACH  
SUBMITTAL ADDRESS

**EL PASO COUNTY ASSESSOR'S  
SCHEDULE NO.:** 56000-00-120

**LEGAL DESCRIPTION:**  
PARCEL DESCRIBED IN EL PASO COUNTY  
CLERK AND RECORDER RECORDS  
BOOK 5634, PAGE 355  
AND BOOK 5655, PAGE 731  
(SEE SHEET I-24 FOR COMPLETE LEGAL  
DESCRIPTION)



REVISIONS		
NO.	DATE	DESCRIPTION
1	10/11/2012	ISSUED FOR VALUE ENGINEERING REVIEW NO. 1
2	11/29/2012	ISSUED FOR VALUE ENGINEERING AND PRICING
3	01/07/2013	ISSUED FOR BUILDING PERMIT SUBMITTAL TO PPRBD (BIOSOLIDS HANDLING COMPLEX)
4	03/14/2013	ISSUED FOR CONSTRUCTION PER PPRBD BLDG PERMIT #65132 (BIOSOLIDS HANDLING COMPLEX)

**GMS, INC.**  
611 NORTH WEBER STREET, SUITE 300  
COLORADO SPRINGS, COLORADO 80903

© 2012 GMS, INC.

SHEET  
I-23  
OF  
-

GMS-FILE 2599  
PLOT STYLE FILE: 10560.ctb  
FILENAME: G:\PMSDD\2012\B\INFORMATIONAL DRAWINGS\I23\I23.DWG