

DRAWING INDEX

DRAWINGS SUBMITTED TO PIKES PEAK REGIONAL BUILDING DEPARTMENT

SHEET NO.

DESCRIPTION

INFORMATIONAL SHEETS

- 1-5 * TITLE SHEET - AERATION BASINS AND AEROBIC DIGESTER BASINS
1-6 * SITE PLAN WITH BOUNDARY - AERATION BASINS AND AEROBIC DIGESTER BASINS
1-7 STRUCTURAL GENERAL NOTES - AERATION BASINS AND AEROBIC DIGESTER BASINS

GENERAL SHEETS

- | | | |
|-------|--|--|
| ◊ G-2 | COORDINATE LISTS I | |
| G-3 | COORDINATE LISTS II | |
| G-7 | MASTER SITE AND GRADING PLAN | |
| G-8 | DETAILED SITE AND GRADING PLAN I | |
| G-9 | DETAILED SITE AND GRADING PLAN II | |
| G-9A | DETAILED SITE AND GRADING PLAN IIA | |
| G-10 | DETAILED SITE AND GRADING PLAN III | |
| G-10 | DETAILED SITE AND GRADING PLAN IV | |
| G-11 | EROSION AND SEDIMENT CONTROL PLAN I | |
| G-12A | EROSION AND SEDIMENT CONTROL PLAN II | |
| G-12B | EROSION AND SEDIMENT CONTROL PLAN III | |
| G-13 | LOWER FOUNTAIN HEIGHTS PLAN AND PROFILE STA. 0+00 TO STA. 9+60 | |
| G-14 | LOWER FOUNTAIN HEIGHTS PLAN AND PROFILE STA. 9+60 TO STA. 14+92.85 | |
| G-15 | CULVERT "B" PLAN AND PROFILE | |
| G-16 | CULVERT "A" PLAN AND PROFILE AND SECTIONS | |

AERATION BASINS AND AEROBIC DIGESTER BASINS SHEETS

- | | |
|-------|---|
| AB-1 | DRILLED PIER PLAN |
| AB-2 | STRUCTURAL PLAN |
| AB-3 | JOINTING PLAN |
| AB-4 | STRUCTURAL SECTIONS AND DETAILS |
| AB-5 | STRUCTURAL SECTIONS AND DETAILS |
| AB-6 | WALKWAY PLAN |
| AB-7 | WALKWAY DETAILS AND SECTIONS |
| AB-8 | WALKWAY DETAILS AND SECTIONS |
| AB-9 | WALKWAY DETAILS AND SECTIONS |
| AB-10 | * DETAILED SITE PLAN - AERATION BASINS AND AEROBIC DIGESTER BASINS |
| AB-11 | * PROCESS EQUIPMENT AND PIPING PLAN - AERATION BASINS AND AEROBIC DIGESTER BASINS |
| AB-12 | * PROCESS EQUIPMENT AND PIPING SECTIONS - AEROBIC DIGESTER BASINS |
| AB-13 | * PROCESS EQUIPMENT AND PIPING SECTION - AERATION BASINS |
| AB-14 | * PROCESS EQUIPMENT AND PIPING SECTION AND DETAIL - AERATION BASINS |

PIKES PEAK REGIONAL BUILDING CODE INFORMATION

3. THESE PLANS HAVE BEEN PREPARED AND DRAWN TO MEET THE REQUIREMENTS OF THE 2009 EDITION OF THE INTERNATIONAL BUILDING CODE, THE 2009 EDITION OF THE INTERNATIONAL PLUMBING CODE, THE 2011 EDITION OF THE NATIONAL ELECTRICAL CODE, THE 2009 EDITION OF THE INTERNATIONAL MECHANICAL CODE, AND THE 2011 PRRBD COMMERCIAL BUILDING CODES.
2. AERATION BASINS AND AEROBIC DIGESTER BASINS
- ADDRESS: 14671 LOWER FOUNTAIN HEIGHTS
(BUILDING NO. E ON SHEET I-6)
STRUCTURE AREA: 41,148 S.F.
USE AND OCCUPANCY: UTILITY, GROUP U
◇ CONSTRUCTION TYPE: II-B
3. STRUCTURAL DESIGN NOTES:
- a. SEE SHEET I-7 FOR ALL STRUCTURAL GENERAL DESIGN NOTES
4. THE WASTEWATER TREATMENT FACILITY IS NOT ACCESSIBLE BY THE GENERAL PUBLIC. A CONTINUOUS PERIMETER SECURITY FENCE WILL BE INSTALLED AROUND THE ENTIRE FACILITY. ACCESS WILL BE CONTROLLED BY THE OPERATIONS PERSONNEL THROUGH AN ELECTRONIC GATE IN THE PERIMETER FENCE.
5. THE FOLLOWING BUILDINGS ARE UNMANNED STRUCTURES. ACCESS TO THESE BUILDINGS ARE LIMITED TO OPERATION AND MAINTENANCE PERSONNEL ONLY.
- a. HEADWORKS BUILDING
b. BLOWER BUILDING
c. EQUIPMENT MAINTENANCE AND STORAGE BUILDING
d. AERATION BASINS AND AEROBIC DIGESTER BASINS
e. SECONDARY CLARIFIER COMPLEX
f. PUMPING AND DISINFECTION BUILDING
g. BIOSOLIDS HANDLING COMPLEX

FACILITY ADDRESS:

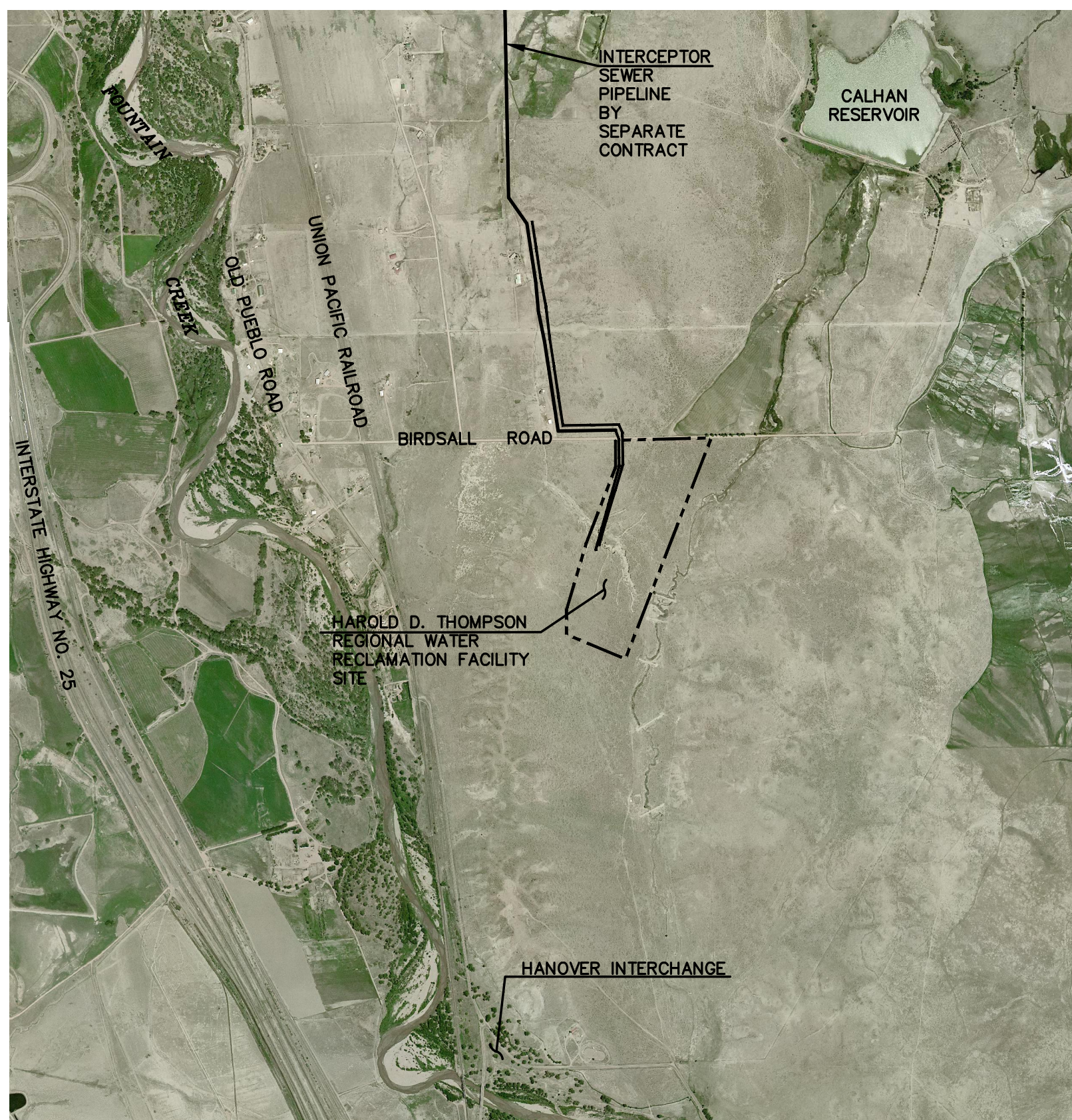
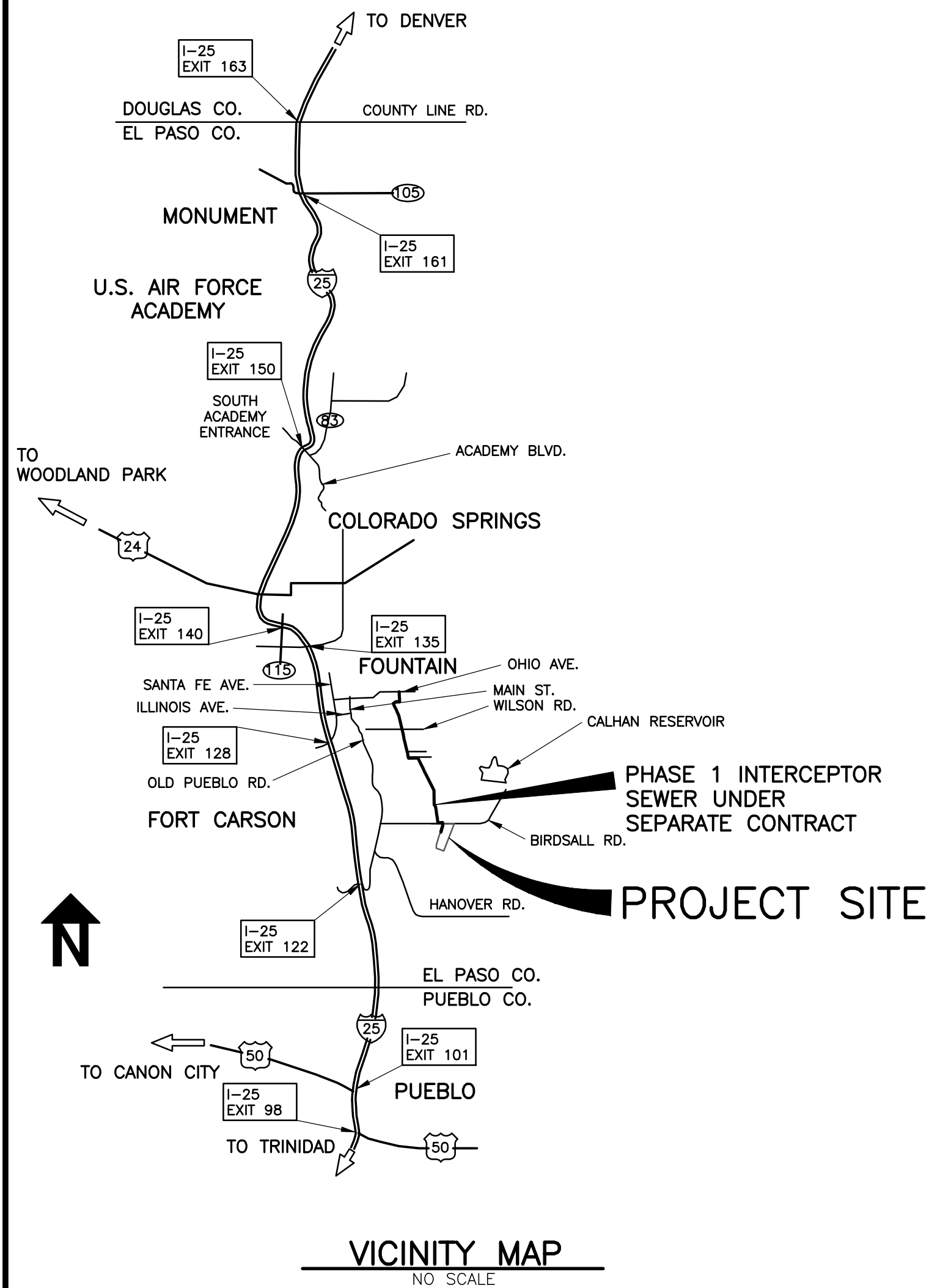
14671 LOWER FOUNTAIN HEIGHTS
(SEE SHEET I-6)
FOUNTAIN, CO. 80817
SEE SHEET I-6 FOR EACH
SUBMITTAL ADDRESS

EL PASO COUNTY ASSESSOR'S
SCHEDULE NO.: 56000-00-120

LEGAL DESCRIPTION:

PARCEL DESCRIBED IN EL PASO COUNTY
CLERK AND RECORDER RECORDS
BOOK 5634, PAGE 355
AND BOOK 5655, 3 PAGE 731
(SEE SHEET 1-6 FOR COMPLETE LEGAL
DESCRIPTION)

GMS-FILE 2599
PLOT STYLE FILE: 1050C.CTB
FILENAME: G:\LEMSDD\20166\INFORMATIONAL DRAWINGS\15\15.DWG



SITE MAP

NO SCALE

[illegible]

GMS, INC.

611 NORTH WEBER STREET, SUITE 300
COLORADO SPRINGS, COLORADO 80903

© 2010 GMS, INC.