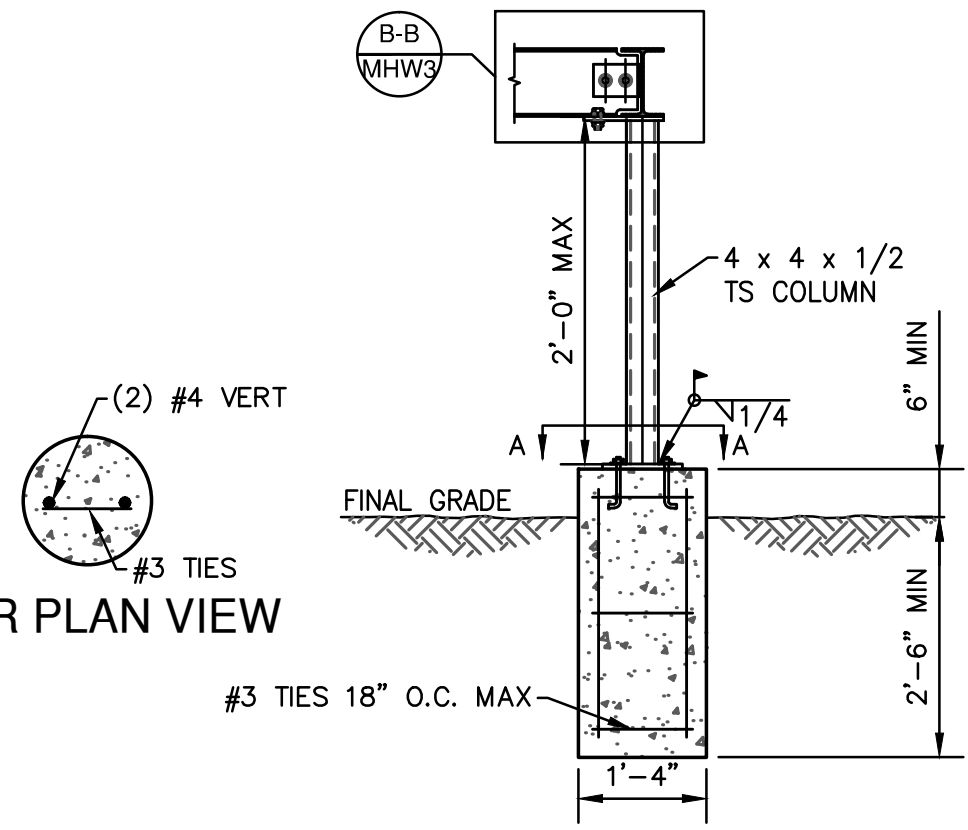
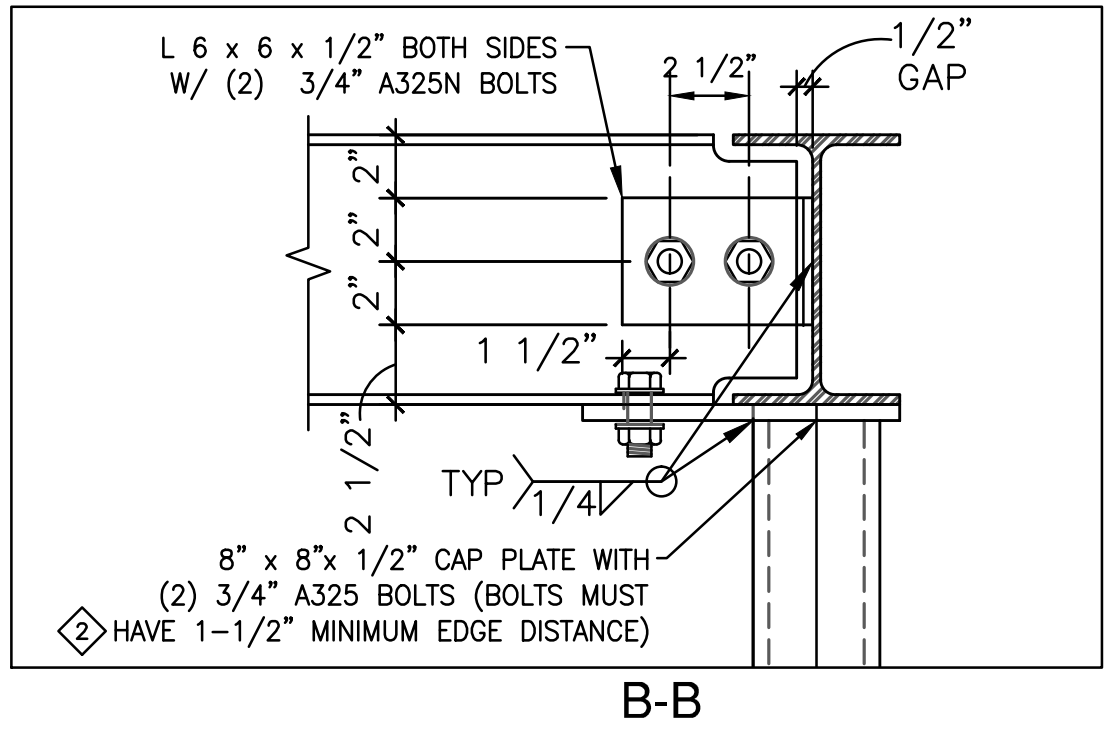
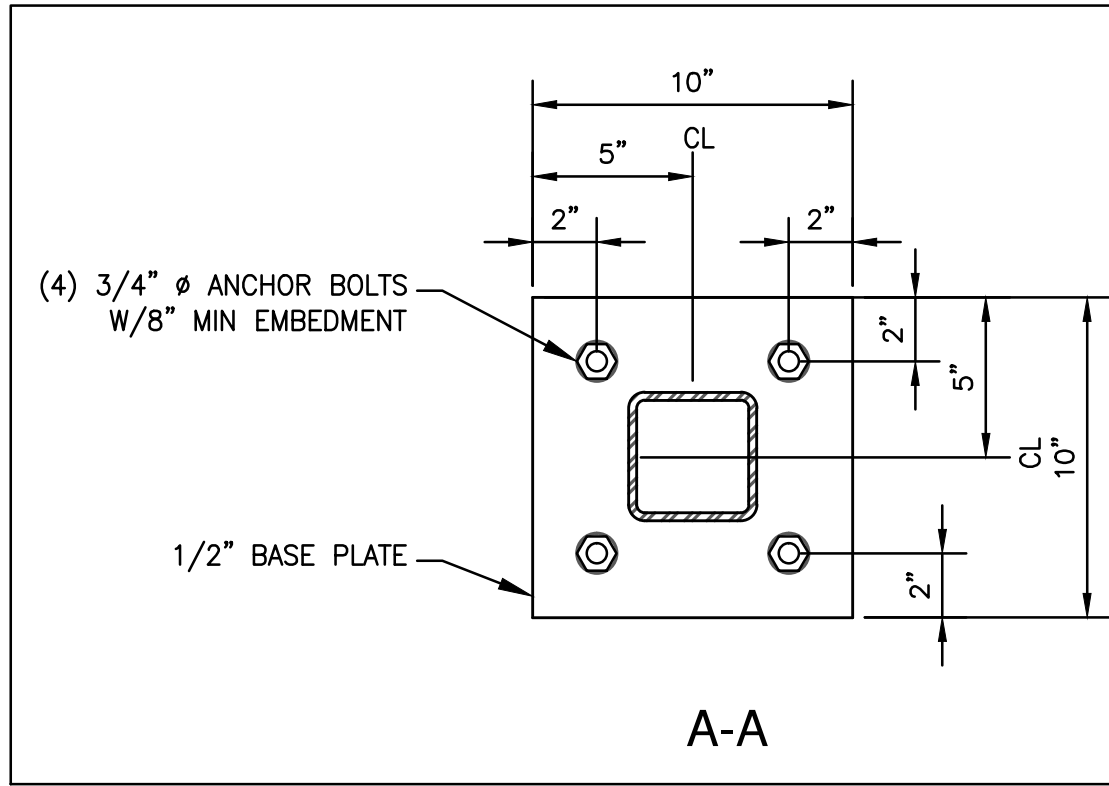


### PIER PLAN VIEW

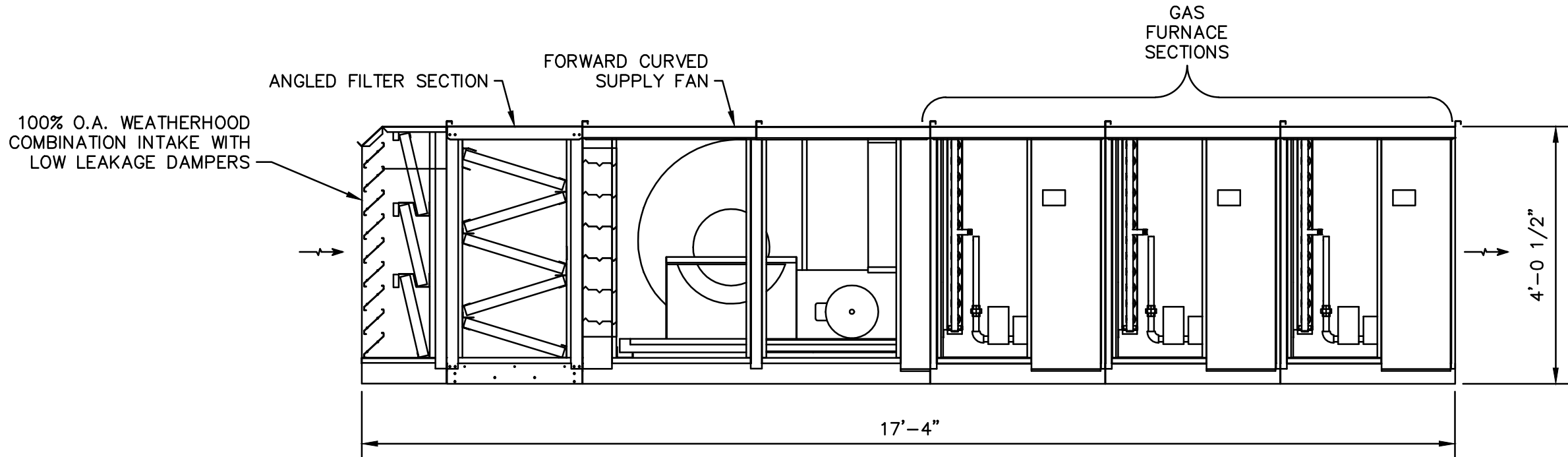


1. LOCATE PIER ON NATURAL UNDISTURBED SOIL OR APPROVED STRUCTURAL FILL. PIER DESIGN BASED ON 1500 PSF MINIMUM SOIL BEARING PRESSURE WITH NO MINIMUM DEAD LOAD REQUIREMENT. SUBJECT TO CHANGE AFTER INSPECTION BY COLORADO REGISTERED GEOTECHNICAL ENGINEER.
2. ALL CONCRETE TO BE TYPE II 3000 PSI CONCRETE.
3. ALL REBAR TO BE GRADE 60 REINFORCING REBAR.
4. LOCATE COLUMNS WITHIN 1" OF CENTERLINE OF PIER.
5. STRUCTURAL STEEL SHALL BE DETAILED AND ERECTED IN ACCORDANCE WITH THE AMERICAN INSTITUTE OF STEEL CONSTRUCTION (AISC) SPECIFICATIONS AND CODE OF PRACTICE, LATEST EDITION.
6. WIDE FLANGE STRUCTURAL STEEL SHALL CONFORM TO ASTM A992. TUBE STEEL COLUMNS SHALL CONFORM TO ASTM A500, GRADE-B.
7. COLUMN BASE PLATES SHALL BE SET ON 1 1/2" NON-SHRINK GROUT.
8. SHOP CONNECTIONS SHALL BE WELDED WITH E70xx ELECTRODES AND GROUPT SMOOTH WHERE EXPOSED. FIELD CONNECTIONS SHALL BE MADE WITH BOLTS CONFORMING TO A325N UNLESS OTHERWISE NOTED. FIELD WELDS SHALL BE MADE WITH E70xx ELECTRODES. ALL WELDING SHALL BE IN ACCORDANCE WITH AWS "STRUCTURAL WELDING CODE", LATEST EDITION AND PERFORMED BY A CERTIFIED, LICENSED WELDER.



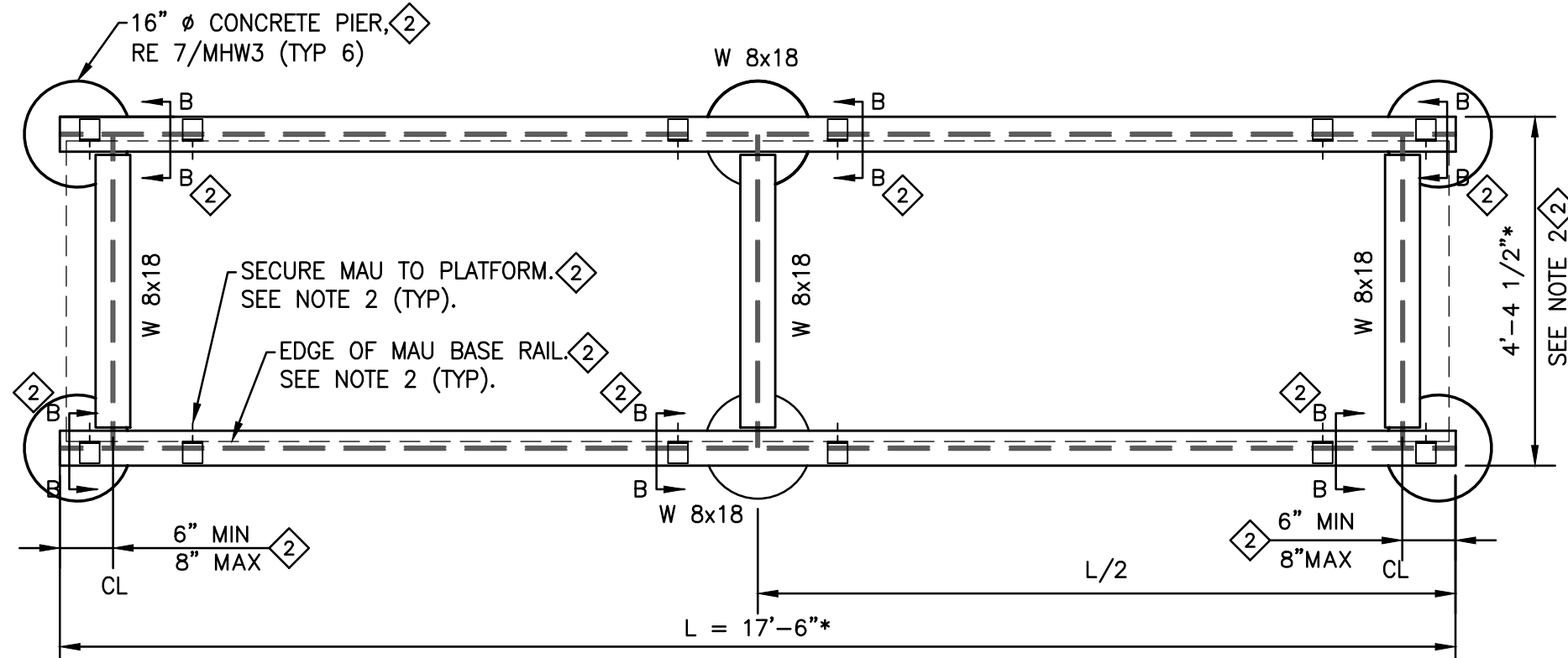
### 7 PIER AND BEAM CONNECTION DETAILS

NOT TO SCALE



### 8 MAU-1 SIDE VIEW

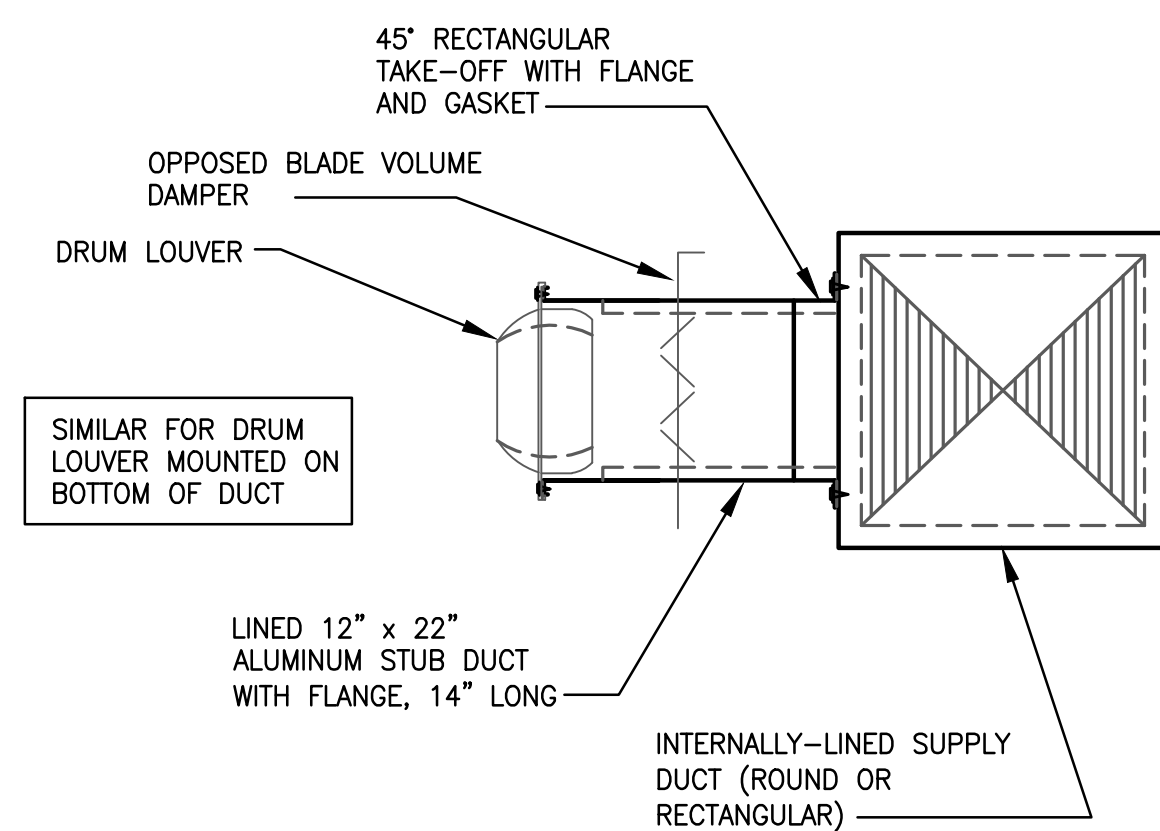
1/2"=1'-0"



- NOTE:
1. \* INDICATES DIMENSIONS TO BE VERIFIED WITH EQUIPMENT FURNISHED. DO NOT PROCEED AND NOTIFY ENGINEER OF RECORD IF LENGTH EXCEEDS 25 FEET.
  2. PLATFORM TO BE 6" WIDER THAN MAU. CONNECT MAU BASE TO PLATFORM TOP FLANGE WITH 3"x4"x1/4"x0'-4" LONG (LLV) ANGLE BRACKETS AT CORNERS AND 1'-0" FROM CENTERLINE OF COLUMNS (12 TOTAL). SECURE VERTICAL LEG TO MAU BASE RAIL WITH (1) 3/4" A325N THROUGH BOLT CENTERED 2" FROM EDGES OF BRACKET. SECURE HORIZONTAL LEG TO TOP FLANGE OF BEAM WITH 1/4" FILLET WELD, 3 SIDES.

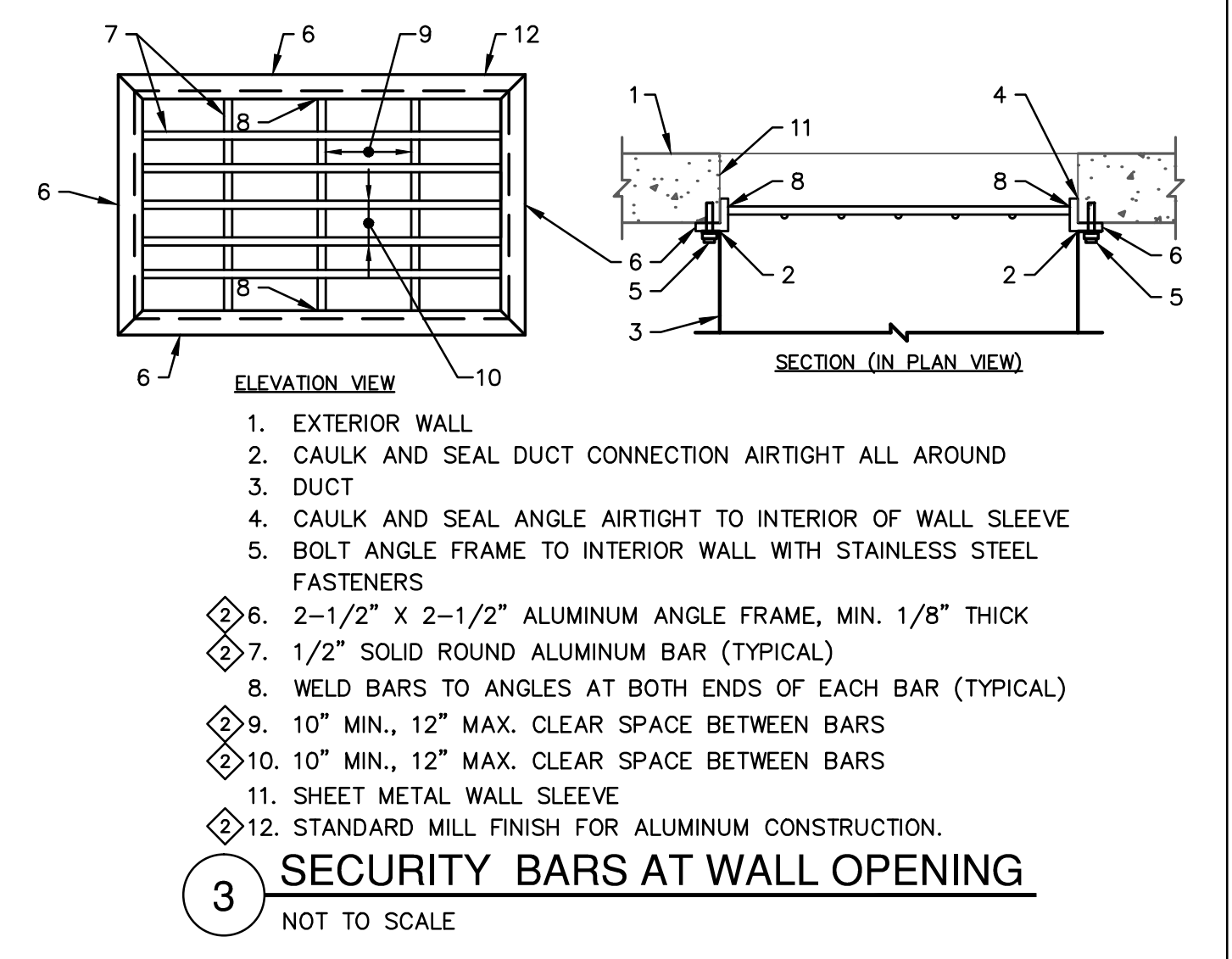
### 6 MAU-1 PLATFORM

NOT TO SCALE



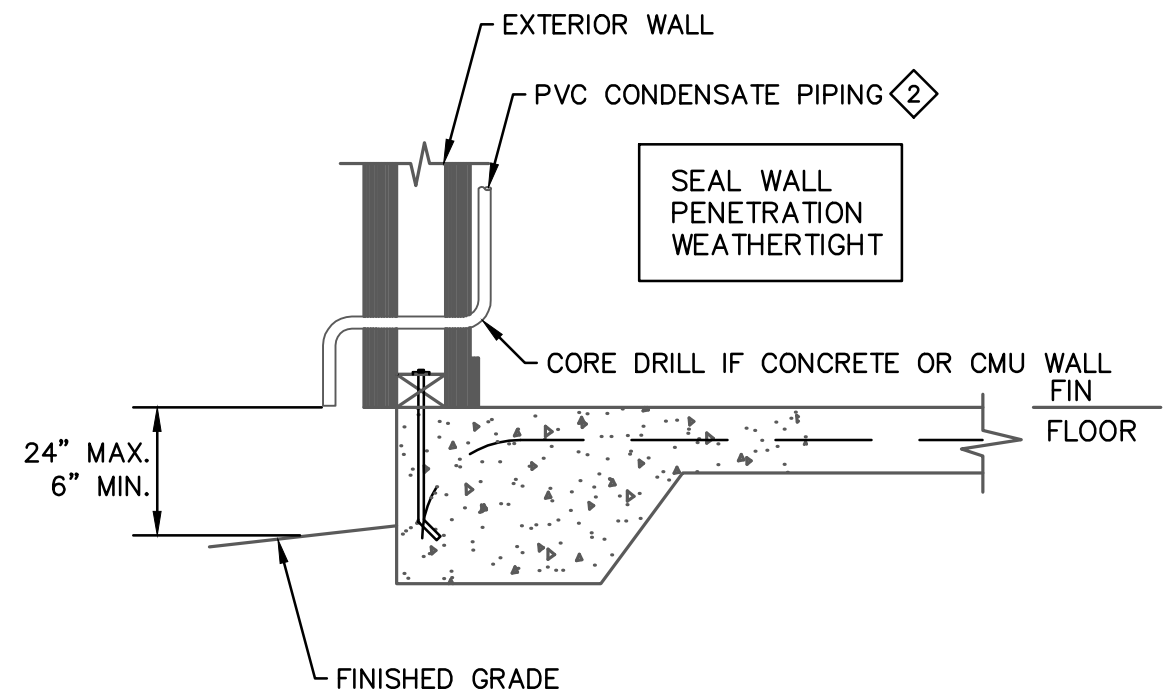
### 5 DRUM LOUVER INSTALLATION

NOT TO SCALE



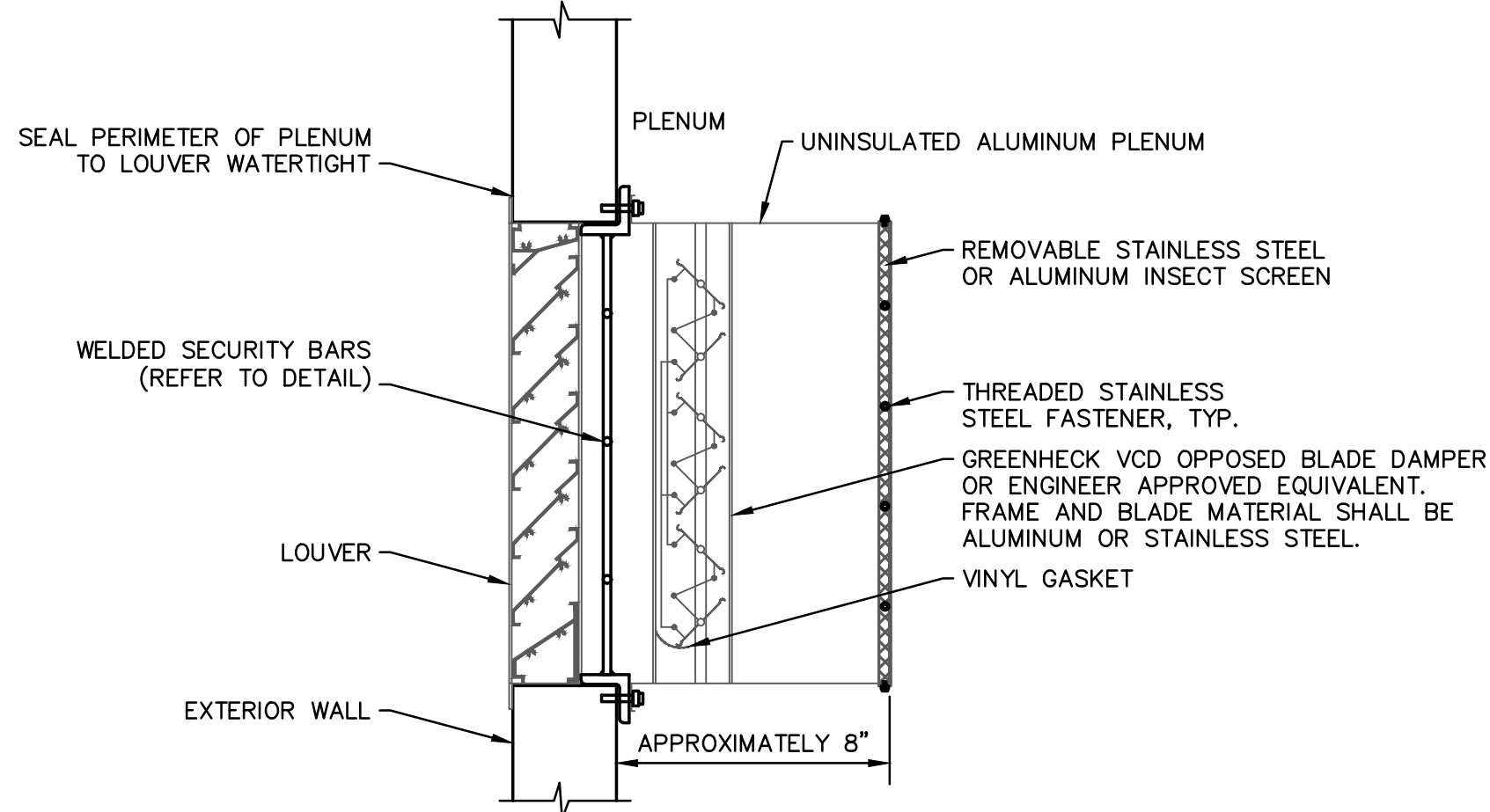
### 3 SECURITY BARS AT WALL OPENING

NOT TO SCALE



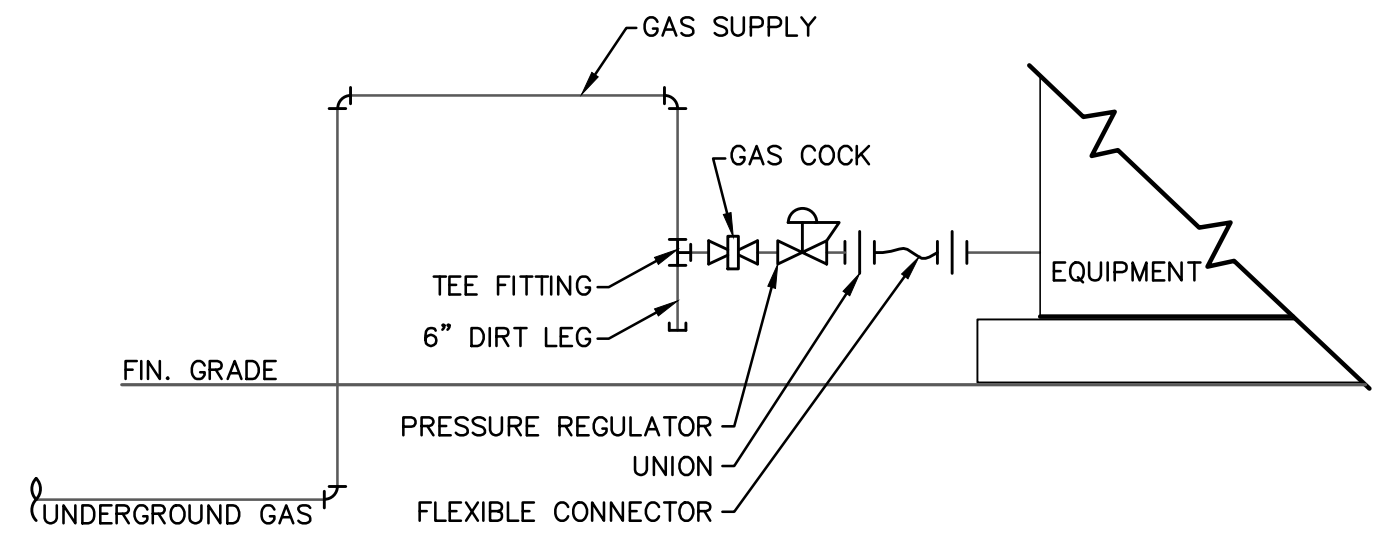
### 2 CONDENSATE DISCHARGE TERMINATION

NOT TO SCALE



### 4 EXHAUST PLENUM DETAIL

NOT TO SCALE



### 1 GAS PIPNG CONNECTION DETAIL

NOT TO SCALE

REVISIONS		
NO.	DATE	DESCRIPTION
1	04/22/2011	ISSUED FOR VALUE ENGINEERING REVIEW AND COMMENT
2	05/17/2011	ISSUED FOR PREPARATION OF CMO
3	06/20/2011	ISSUED FOR BUILDING PERMIT SUBMITTAL TO PRBDO (HEADWORKS BUILDING)
4	08/05/2011	ISSUED FOR CONSTRUCTION PER PRBDO BUILDING PERMIT #68510 (HEADWORKS BLDG)

THIS DRAWING IS THE PROPERTY OF GMS, INC., AND IS NOT TO BE RE-PRODUCED, MODIFIED OR USED FOR ANY OTHER PROJECT OR EXTENSION OF THIS PROJECT EXCEPT BY AGREEMENT WITH THIS COMPANY.

© 2010 GMS, INC.

**MECHANICAL SCHEDULES AND DETAILS**  
**HEADWORKS BUILDING**  
 HAROLD D. THOMPSON REGIONAL WATER RECLAMATION FACILITY  
 LOWER FOUNTAIN METROPOLITAN SEWAGE DISPOSAL DISTRICT

DRAWN: JH  
 CHECKED: CF  
 DATE: 04/11/2011  
 PROJECT NO.: 20166.352  
 GMS FILE NO.: 2599

**GMS, INC.**  
 CONSULTING ENGINEERS  
 611 N. WEBER, SUITE 300  
 COLORADO SPRINGS, COLORADO 80903

SHEET  
**MHW-3**  
 OF  
 1

XREF: FILENAME: G:\  
 BASE: DWG: G:\  
 PLOT STYLE FILE: 1000.ctb  
 FILENAME: G:\LPMSSD\20166\310\MHW3\MHW3.dwg