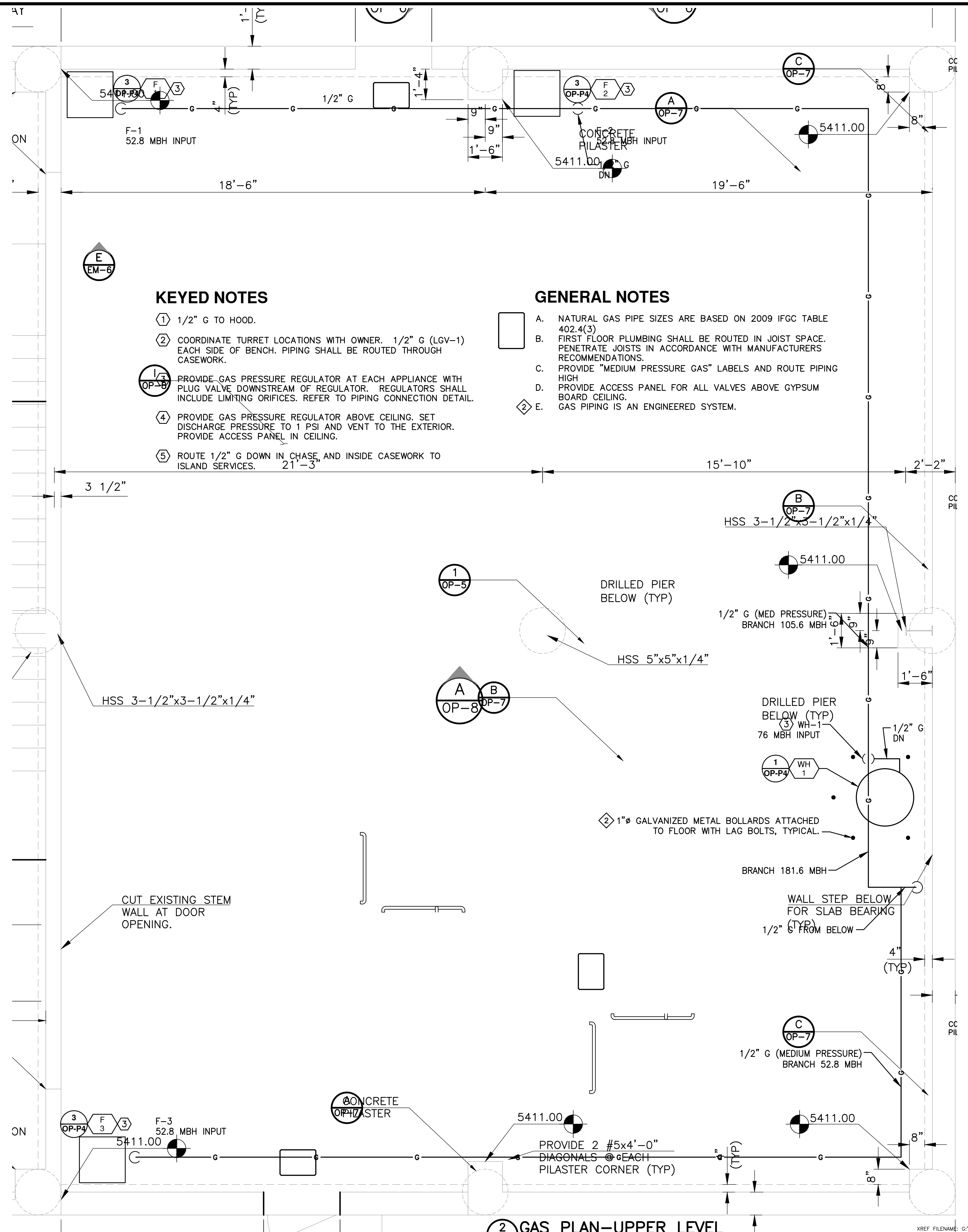


1 GAS PLAN—LOWER LEVEL
 SCALE: 3/8" = 1'-0"



2 GAS PLAN—UPPER LEVEL
 SCALE: 3/8" = 1'-0"

KEYED NOTES

- ① 1/2" G TO HOOD.
- ② COORDINATE TURRET LOCATIONS WITH OWNER. 1/2" G (LGV-1) EACH SIDE OF BENCH. PIPING SHALL BE ROUTED THROUGH CASEWORK.
- ③ PROVIDE GAS PRESSURE REGULATOR AT EACH APPLIANCE WITH PLUG VALVE DOWNSTREAM OF REGULATOR. REGULATORS SHALL INCLUDE LIMITING ORIFICES. REFER TO PIPING CONNECTION DETAIL.
- ④ PROVIDE GAS PRESSURE REGULATOR ABOVE CEILING. SET DISCHARGE PRESSURE TO 1 PSI AND VENT TO THE EXTERIOR. PROVIDE ACCESS PANEL IN CEILING.
- ⑤ ROUTE 1/2" G DOWN IN CHASE, AND INSIDE CASEWORK TO ISLAND SERVICES. 21'-3"

GENERAL NOTES

- A. NATURAL GAS PIPE SIZES ARE BASED ON 2009 IFGC TABLE 402.4(3)
- B. FIRST FLOOR PLUMBING SHALL BE ROUTED IN JOIST SPACE. PENETRATE JOISTS IN ACCORDANCE WITH MANUFACTURERS RECOMMENDATIONS.
- C. PROVIDE "MEDIUM PRESSURE GAS" LABELS AND ROUTE PIPING HIGH
- D. PROVIDE ACCESS PANEL FOR ALL VALVES ABOVE GYPSUM BOARD CEILING.
- E. GAS PIPING IS AN ENGINEERED SYSTEM.

REVISIONS		
NO.	DATE	DESCRIPTION
1	07/18/2012	ISSUED FOR BUILDING PERMIT SUBMITTAL TO PRRB (OPERATIONS BLDG)
2	08/15/2012	ISSUED FOR CONSTRUCTION PER PRRB BUILDING PERMIT #135220 (OPERATIONS BLDG)

THIS DRAWING IS THE PROPERTY OF GMS, INC., AND IS NOT TO BE REPRODUCED, MODIFIED OR USED FOR ANY OTHER PROJECT OR EXTENSION OF THIS PROJECT EXCEPT BY AGREEMENT WITH THIS COMPANY.

GAS PLAN
 HAROLD D. THOMPSON REGIONAL WATER RECLAMATION FACILITY
 LOWER FOUNTAIN METROPOLITAN SEWAGE DISPOSAL DISTRICT

DRAWN SKC
 DESIGNED DRF
 CHECKED RJS
 DATE MAY 2012
 PROJECT NO. 20166.410
 GMS FILE NO. 2599

GMS, INC.
 CONSULTING ENGINEERS
 611 N. WEBER, SUITE 300
 COLORADO SPRINGS, COLORADO 80903

SHEET
MOP-1
 OF
 —