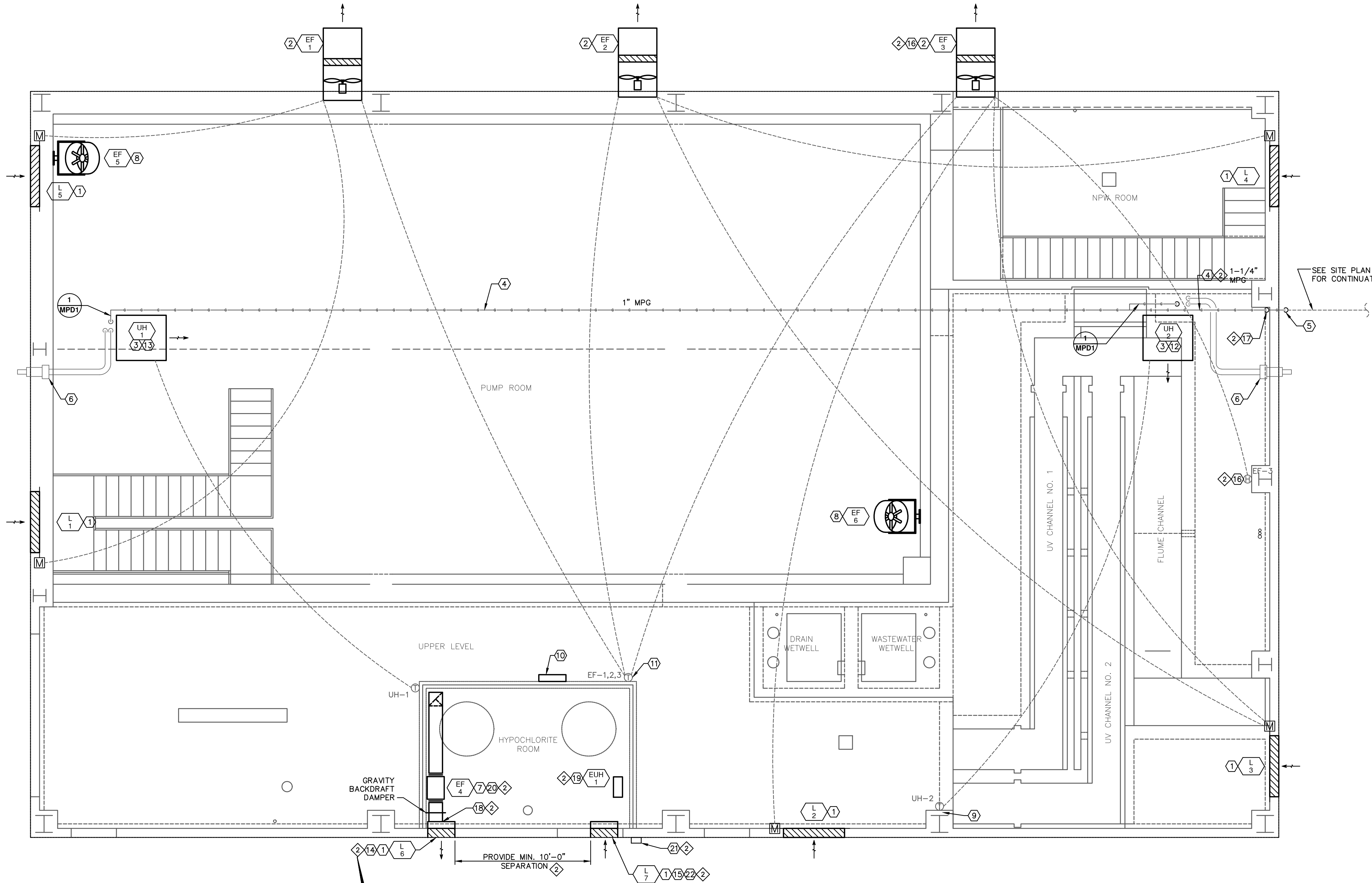


GENERAL NOTES

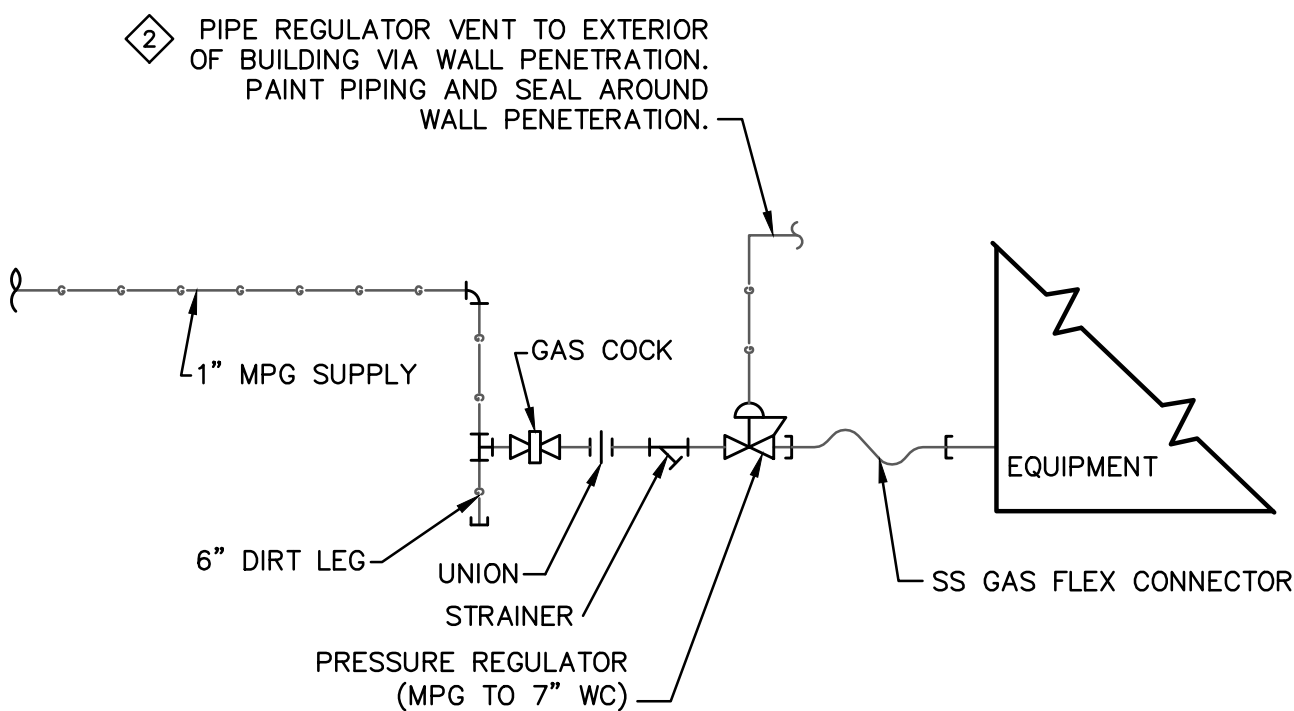
- 2 A. COORDINATE ALL MECHANICAL EQUIPMENT LOCATIONS AND INSTALLATION REQUIREMENTS WITH THE BUILDING MANUFACTURER TO ENSURE BUILDING STRUCTURAL DESIGN LOADS ACCURATELY ACCOUNT FOR THE EQUIPMENT AND THAT THERE ARE NO INTERFERENCES BETWEEN THE EQUIPMENT AND THE FRAMING AND STRUCTURAL MEMBERS OF THE BUILDING.

KEYED NOTES

- 1 SEE ARCHITECTURAL FOR LOUVER LOCATION.
- 2 MOUNT FAN ASSEMBLY MIN. 17'-0" A.F.F.
- 3 MOUNT UNIT HEATER AS FAR SOUTH AS POSSIBLE, MIN. 6" ABOVE BRIDGE CRANE AND MIN. 1'-0" BELOW BUILDING BEAM.
- 4 ROUTE GAS LINE ABOVE BRIDGE CRANE.
- 5 1-1/4" NAT. GAS, MEDIUM PRESSURE 2 PSIG, 458 MBH, CONNECTED LOAD. INSTALL GAS SHUTOFF VALVE ABOVE GRADE. ROUTE PIPE THROUGH WALL 1'-0" ABOVE FOUNDATION WALL. SEAL AROUND WALL PENETRATION.
- 6 PVC COMBUSTION & EXHAUST FLUES WITH CONCENTRIC ADAPTER. ROUTE ABOVE BRIDGE CRANE THROUGH WALL. SIZE PIPING PER HEATER MANUFACTURER'S RECOMMENDATIONS.
- 7 EXHAUST FAN MOUNTED IN HORIZONTAL 12X12 DUCT. SUPPORT FAN INDEPENDENT OF DUCT WITH UNISTRUT AND ALL-THREAD HANGERS MIN. 8'-0" A.F.F. PROVIDE FLEXIBLE CONNECTIONS ON FAN INLET AND OUTLET. DISCHARGE ELBOW UPSTREAM OF FAN SHALL BE VANED. EXTEND INTAKE DUCT DOWN TO 0'-6" A.F.F. LEAVE OPEN-ENDED AND COVER WITH 1/4" SCREEN ATTACHED TO DUCT WITH SCREWS AT 4" O.C.
- 8 MOUNT FAN YOKE 1'-0" BELOW TOP EDGE OF WALL. ANGLE FAN 45 DEGREES BELOW HORIZONTAL.
- 9 PROVIDE INSULATED THERMOSTAT MOUNT.
- 10 FAN CONTROL PANEL. PANEL SHALL CONTAIN RELAYS FOR INTERLOCKS AND HOA SWITCHES AS DESCRIBED ON EXHAUST FAN SCHEDULE.
- 11 MOUNT T-STAT MIN. 48" A.F.F., AS CLOSE TO CORNER AS POSSIBLE.
- 12 ROUTE 1/2" PVC CONDENSATE DRAIN LINE FROM UNIT HEATER TO DRAIN PIPING IN NPW ROOM PER SHEET PD-11.
- 13 ROUTE 1/2" PVC CONDENSATE DRAIN LINE FROM UNIT HEATER TO SOUTH TRENCH DRAIN.
- 14 INSTALL 6" DEEP GALVANIZED SHEET METAL PLENUM, SAME DIMENSIONS AS LOUVER.
- 15 PROVIDE 6 DEEP GALVANIZED SHEET METAL SLEEVE TO THE BACK (ROOM INTERIOR) OF THE LOUVER AND INSTALL A GRAVITY BACKDRAFT DAMPER.
- 16 HUMIDISTAT FOR CONTROL OF EF-3. EF-3 HAND-OFF-AUTO SWITCH SHALL BE WIRED TO RESPOND TO A CALL TO RUN FROM BOTH THE THERMOSTAT AND THE HUMIDISTAT.
- 17 ROUTE 1-1/4" G UP IN CORNER TO APPROXIMATELY 20'-0" ABOVE UPPER LEVEL FLOOR.
- 18 CONNECT 12"x12" DUCT TO BACK OF PLENUM. SEAL DUCT TO PLENUM.
- 19 MOUNT TOP OF EUH-1 AT 10'-0" A.F.F.. DIRECT AIR DISCHARGE HORIZONTAL.
- 20 FAN SIZED FOR 30 AIR CHANGES PER HOUR.
- 21 WEATHER PROOF MANUAL SHUTOFF CONTROL FOR EF-4. SWITCH SHALL BE BREAK GLASS TYPE AND LABELED "VENTILATION SYSTEM EMERGENCY SHUTOFF" PER 2009 I.M.C. 502.8.1.1. REFER TO KEYED NOTE 2 ON SHEET EPD-6 OF THE ELECTRICAL DRAWINGS.
- 22 MOUNT INTAKE LOUVER AT 8'-6" A.F.F. OF HYPOCHLORITE ROOM.



1 PUMPING AND DISINFECTION BUILDING MECHANICAL PLAN
SCALE: SCALE: 1/4" = 1'-0"



1 GAS PIPING CONNECTION DETAIL
NOT TO SCALE

REVISIONS		
NO.	DATE	DESCRIPTION
1	01/25/2012	ISSUED FOR PD BUILDING VALUE ENGINEERING REVIEW AND COMMENTS
2	04/23/2012	ISSUED FOR BUILDING PERMIT SUBMITTAL TO PPRBD (PUMPING AND DISINFECTION BLDG)
3	05/21/2012	ISSUED FOR CONSTRUCTION PER PPRBD BUILDING PERMIT #98993 (PUMPING AND DISINFECTION BLDG)

THIS DRAWING IS THE PROPERTY OF GMS, INC., AND IS NOT TO BE RE-PRODUCED, MODIFIED OR USED FOR ANY OTHER PROJECT OR EXTENSION OF THIS PROJECT EXCEPT BY AGREEMENT WITH THIS COMPANY.

© 2010 GMS, INC.

MECHANICAL PLAN PUMPING AND DISINFECTION BUILDING HAROLD D. THOMPSON REGIONAL WATER RECLAMATION FACILITY LOWER FOUNTAIN METROPOLITAN SEWAGE DISPOSAL DISTRICT	
DRAWN JE DESIGNED SB CHECKED SB DATE 2011 PROJECT NO. 20166.330 GMS FILE NO. 2599	GMS, INC. CONSULTING ENGINEERS 611 N. WEBER, SUITE 300 COLORADO SPRINGS, COLORADO 80903
SHEET MPD-1 OF —	