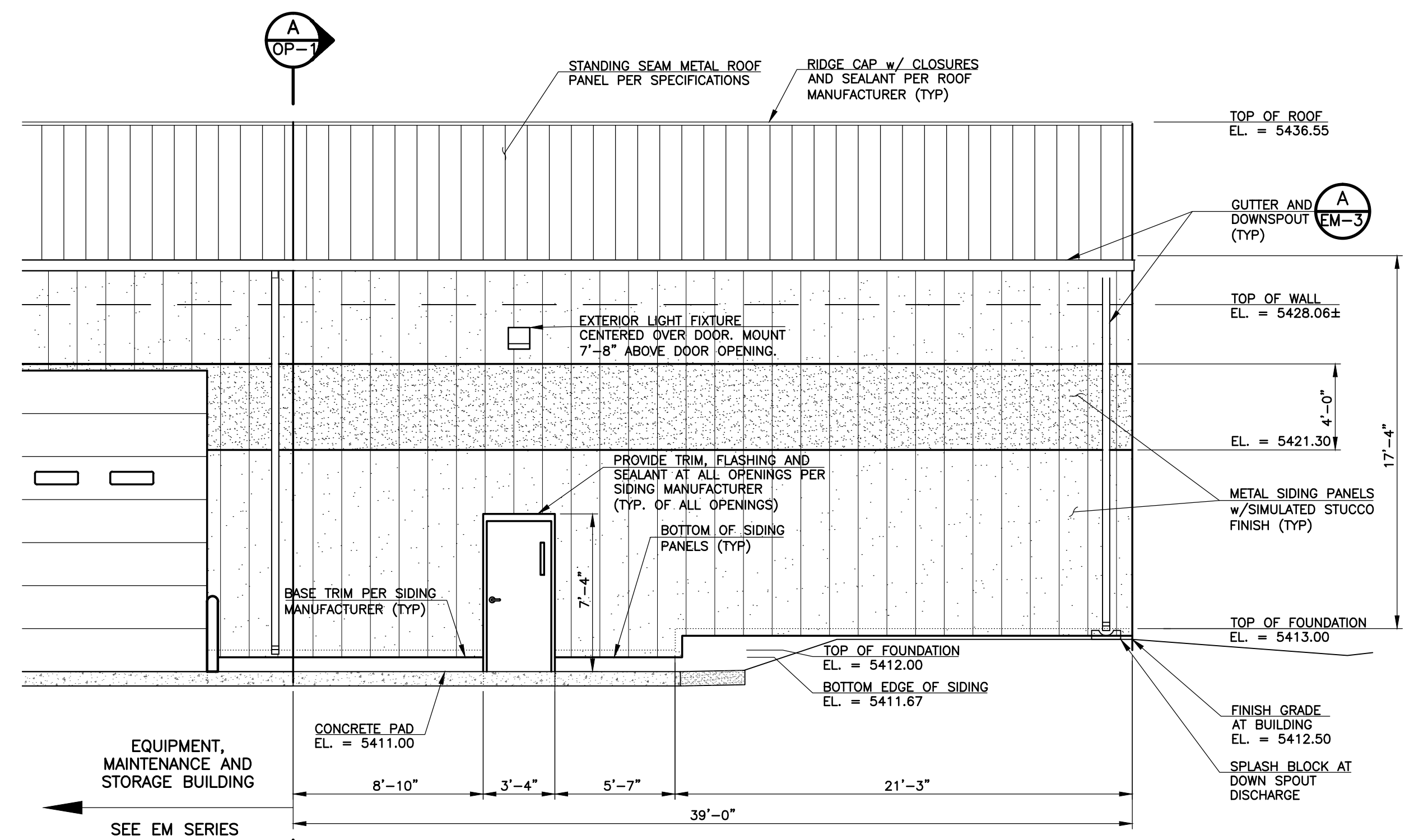
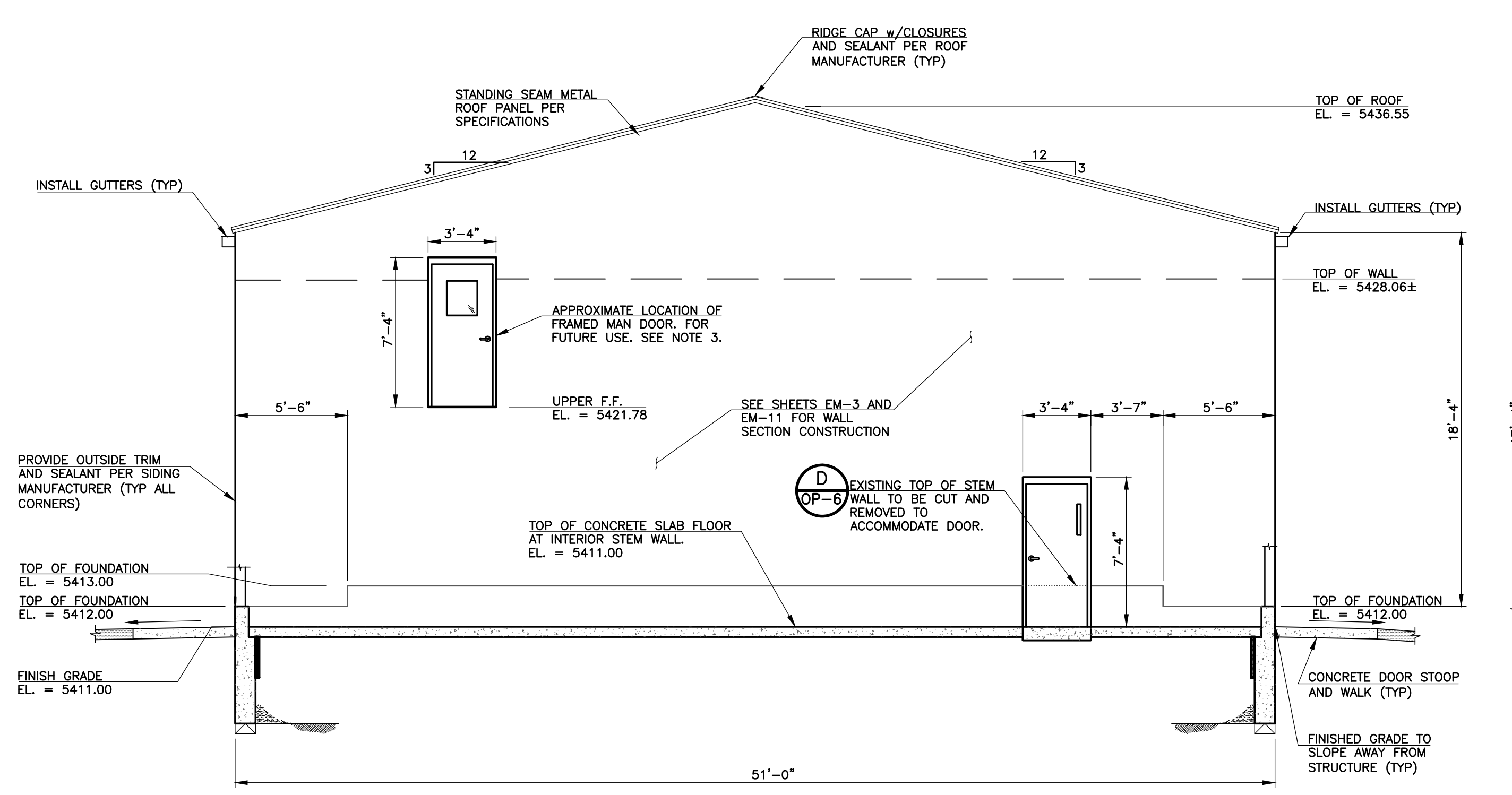


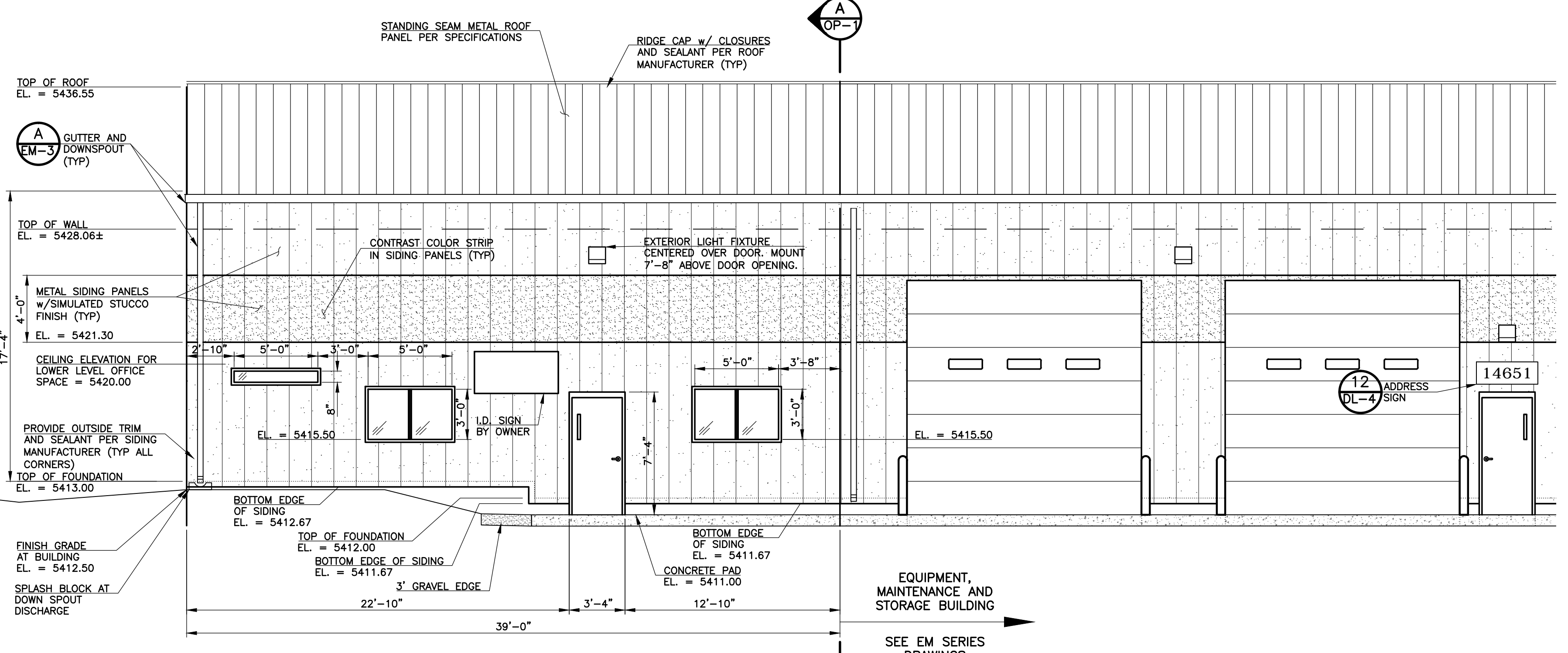
**1 OPERATIONS BUILDING – NORTH ELEVATION**  
 SCALE: 1" = 5'-0"



**2 OPERATIONS BUILDING – EAST ELEVATION**  
 SCALE: 1" = 5'-0"



**3 OPERATIONS BUILDING SECTION**  
 SCALE: 1" = 5'-0"



**3 OPERATIONS BUILDING – WEST ELEVATION**  
 SCALE: 1" = 5'-0"

**SHEET NOTES:**

- REFER TO MECHANICAL DRAWINGS FOR PENETRATION REQUIREMENTS ON DUCTWORK, LOUVERS, ETC. VERIFY WALL PENETRATION SIZES WITH MECHANICAL EQUIPMENT REQUIREMENTS. PROVIDE TRIM, FLASHING AND SEALANT AROUND ALL PENETRATIONS PER SIDING MANUFACTURER.
- THE CONTRACTOR, HVAC SUPPLIER AND METAL BUILDING MANUFACTURER MUST COORDINATE THE OPENING PENETRATIONS REQUIRED FOR HVAC EQUIPMENT, LOUVERS AND DUCTWORK.
- REFER TO ARCHITECTURAL DETAILS FOR DOOR LITE REQUIREMENTS.
- FRAMED MAN DOOR AT FUTURE UPPER LEVEL SHALL BE OPERABLE FOR EMERGENCY ACCESS TO ENCLOSED SPACE ABOVE OPERATIONS BUILDING FLOOR AREA.
- THE END WALL METAL PANELING DELIVERED TO THE SITE FOR THE EQUIPMENT AND MAINTENANCE BUILDING IS TO BE USED ON THE SOUTH END OF THE EAST AND WEST ELEVATIONS, I.E. APPROXIMATELY 26' ON EACH WALL.
- THERE IS APPROXIMATELY 1.9 FEET BETWEEN THE TOP OF CUPBOARDS SHOWN ON SHEET OP-4 AND THE CEILING OF THE MAIN LEVEL (5420.0). BASED UPON CUPBOARD DIMENSIONS AND WINDOW FRAMING PROVIDED BY THE WINDOW SUPPLIER/MANUFACTURER, THE WINDOW PENETRATION DIMENSIONS MAY VARY FROM THOSE SHOWN ON THE NORTH AND WEST ELEVATIONS.

REVISIONS		
NO.	DATE	DESCRIPTION
1	05/07/2012	ISSUED FOR VALUE ENGINEERING
2	06/29/2012	ISSUED FOR BUILDING PERMIT SUBMITTAL TO PRRBD (OPERATIONS BUILDING)
3	08/15/2012	ISSUED FOR CONSTRUCTION PER PRRBD BUILDING PERMIT #135220 (OPERATIONS BLDG)

THIS DRAWING IS THE PROPERTY OF GMS, INC., AND IS NOT TO BE REPRODUCED, MODIFIED OR USED FOR ANY OTHER PROJECT OR EXTENSION OF THIS PROJECT EXCEPT BY AGREEMENT WITH THIS COMPANY.

**ARCHITECTURAL ELEVATIONS**  
 HAROLD D. THOMPSON REGIONAL WATER RECLAMATION FACILITY  
 LOWER FOUNTAIN METROPOLITAN SEWAGE DISPOSAL DISTRICT

**GMS, INC.**  
 CONSULTING ENGINEERS  
 611 N. WEBER, SUITE 300  
 COLORADO SPRINGS, COLORADO 80903

DRAWN: SKC  
 DESIGNED: DRF  
 CHECKED: RUS  
 DATE: MAY 2012  
 PROJECT NO.: 20166.410  
 GMS FILE NO.: 2599

SHEET  
**OP-1**  
 OF  
 -

XREF FILENAME: G:\BASE DWG: G:\PLOT STYLE FILE: 1055C.DWG  
 FILENAME: G:\LFWSD\20166\410\OP1.DWG