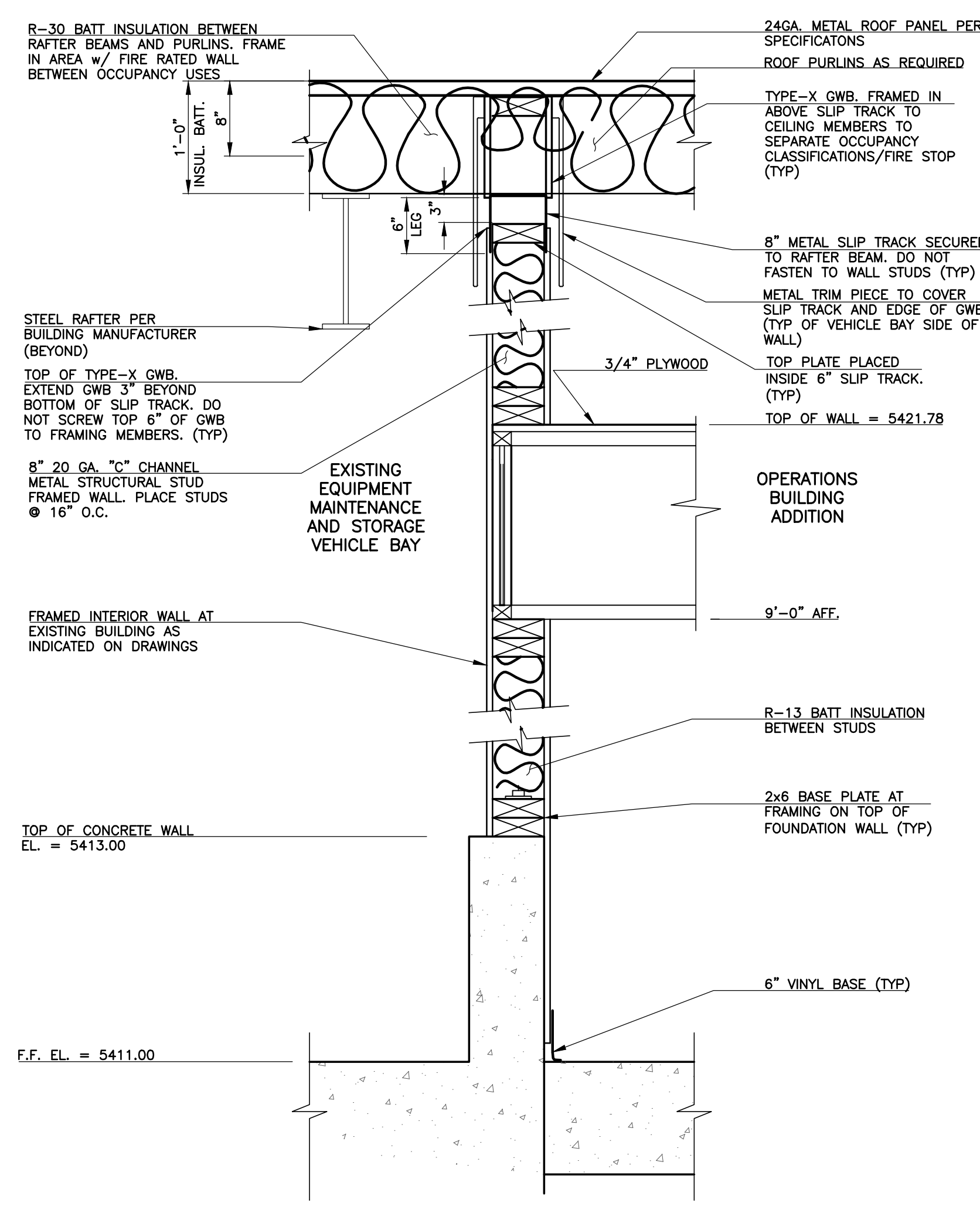
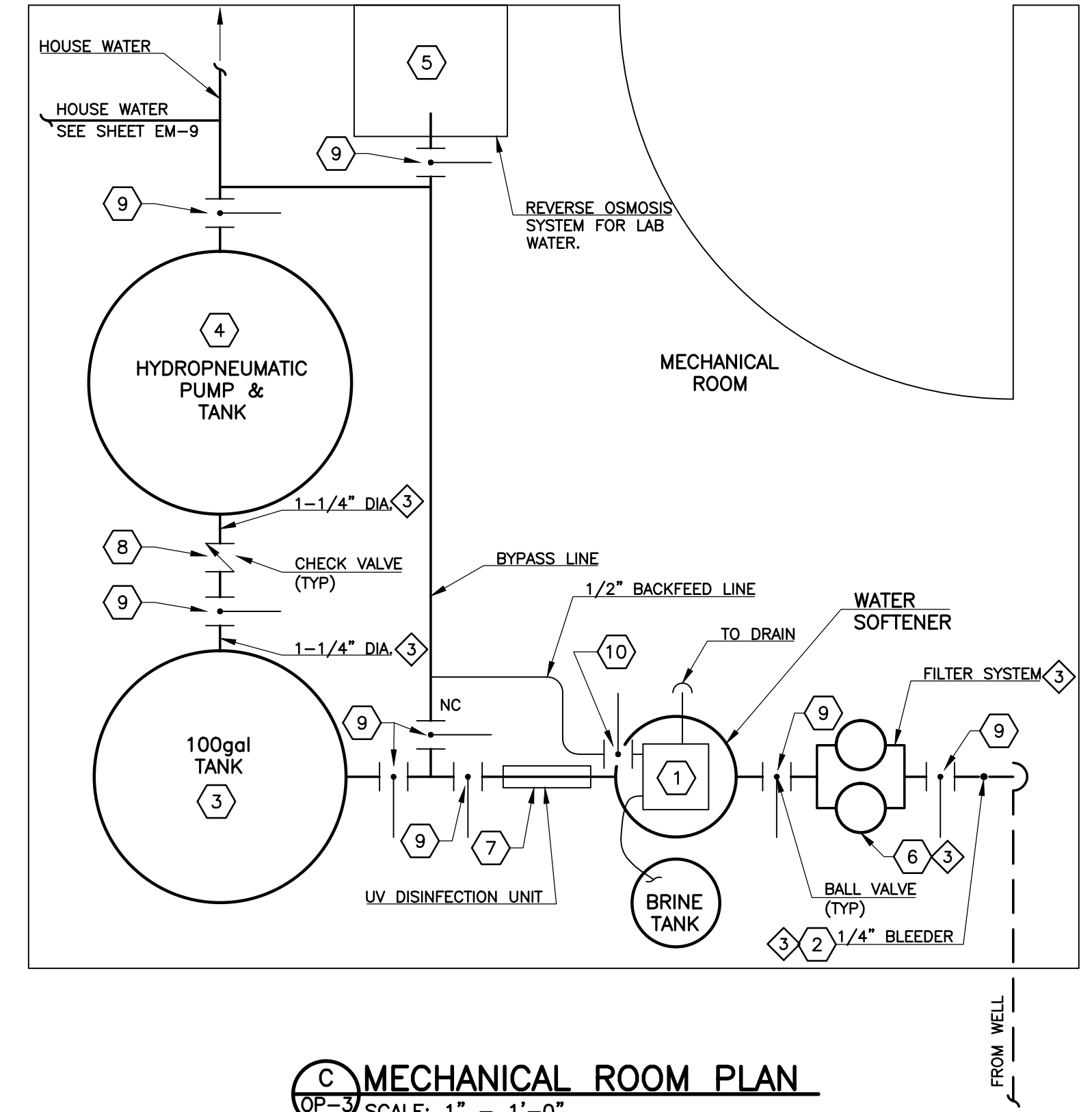


\* IN LIEU OF INSULATED METAL PANEL, CONTRACTOR SHALL PROVIDE COMPARISON COSTING FOR A SINGLE SKIN, TEXTURED 20 GA. EXTERIOR METAL PANEL, MINIMUM R19 BATT INSULATION AND INTERIOR LINER PANEL EXTENDING TO EAVE.

**A WALL SECTION AT FRAME COLUMN**  
OP-3 SCALE: NONE



**B WALL SECTION AT EXISTING BUILDING**  
OP-3 SCALE: NONE



**C MECHANICAL ROOM PLAN**  
OP-3 SCALE: 1" = 1'-0"

MECHANICAL ROOM SCHEDULE					
ITEM	DESCRIPTION	CATALOG NO. SEE NOTE 1	QTY.	REMARKS	
1	WATER SOFTENER/BRINE TANK	-	1	CULLIGAN MEDALIST PLUS	
2	1/4" BLEEDER	-	1	INSTALL BLEEDER FOR AIR BLEED	
3	STORAGE TANK	USA BL. BK. ME-61432	1	100 GALLON	
4	HYDROPNEUMATIC PUMP AND TANK	AMTROL RP-15	2	-	
5	REVERSE OSMOSIS SYSTEM	-	1	CULLIGAN AC-30 w/ MIN. 8 GAL STORAGE TANK	
6	FILTER SYSTEM	USA BL. BK. ME-68786	2	4.5"x20" HOUSING w/ 5 MICRON FILTER (SUPPLY 4 FILTERS)	
7	UV DISINFECTION UNIT	-	1	TROJAN UVMAX PRO 20	
8	CHECK VALVE	-	2	SEE PROJECT SPECIFICATIONS	
9	BALL VALVE	-	8	TYPICAL - SEE PROJECT SPECIFICATIONS	
10	BALL VALVE	-	1	TYPICAL - SEE PROJECT SPECIFICATIONS	

NOTES:  
 1. CATALOG OR PRODUCT DATA INFORMATION HAS BEEN PROVIDED FOR REFERENCE. AN APPROVED EQUIVALENT MAY BE USED IN LIEU OF THE EQUIPMENT REFERENCED.  
 2. ALL PIPING TO BE 1" DIAMETER SCHEDULE 80 PVC UNLESS OTHERWISE NOTED.

DOOR SCHEDULE											
DOOR	LOCATION	SIZE	MATERIAL	TYPE	SWING	INSULATED	HEAD	JAMB	SILL	REMARKS	HARDWARE SET
D-OP1	WEST ENTRY	3'-0" x 7'-0"	STEEL	A	LHR	YES	3	5	4	STEEL DOOR AND FRAME w/ MECHANICAL PUSHBUTTON SECURITY SYSTEM.	A
D-OP2	EAST ENTRY	3'-0" x 7'-0"	STEEL	A	RHR	YES	3	5	4	STEEL DOOR AND FRAME w/ MECHANICAL PUSHBUTTON SECURITY SYSTEM.	A
D-OP3	VEHICLE BAY	3'-0" x 7'-0"	STEEL	A	LHR	YES	1	1	2	STEEL DOOR AND FRAME AND STAINLESS STEEL HARDWARE.	F
D-OP4	WEST ENTRY	3'-0" x 7'-0"	STEEL	C	RHR	YES	1	1	2	STEEL DOOR AND FRAME AND STAINLESS STEEL HARDWARE.	F
D-OP5	OFFICE NO. 1	3'-0" x 7'-0"	STEEL	A	LH	YES	1	1	2	STEEL DOOR AND FRAME AND STAINLESS STEEL HARDWARE.	F
D-OP6	PROCESS OPERATIONS ROOM	3'-0" x 7'-0"	STEEL	C	RH	YES	1	1	2	STEEL DOOR AND FRAME AND STAINLESS STEEL HARDWARE.	F
D-OP7	STAFF WORK ROOM	3'-0" x 7'-0"	STEEL	C	LHR	YES	1	1	2	STEEL DOOR AND FRAME AND STAINLESS STEEL HARDWARE.	G
D-OP8	VISITOR'S RESTROOM	3'-0" x 7'-0"	STEEL	B	RH	YES	1	1	2	STEEL DOOR AND FRAME AND STAINLESS STEEL HARDWARE.	F
D-OP9	IT SERVER ROOM	3'-0" x 7'-0"	STEEL	D	RH	YES	1	1	2	STEEL DOOR AND FRAME AND STAINLESS STEEL HARDWARE.	F
D-OP10	LOCKER ROOM	3'-0" x 7'-0"	STEEL	B	LH	YES	1	1	2	STEEL DOOR AND FRAME AND STAINLESS STEEL HARDWARE.	F
D-OP11	SHOWER/TOILET ROOM	3'-0" x 7'-0"	STEEL	B	RH	YES	1	1	2	STEEL DOOR AND FRAME AND STAINLESS STEEL HARDWARE.	F
D-OP12	MECHANICAL ROOM	3'-0" x 7'-0"	STEEL	D	LH	YES	1	1	2	STEEL DOOR AND FRAME AND STAINLESS STEEL HARDWARE.	F
D-OP13	UPPER OFFICE AREA	3'-0" x 7'-0"	STEEL	A	RH	YES	1	1	2	STEEL DOOR AND FRAME AND STAINLESS STEEL HARDWARE.	G

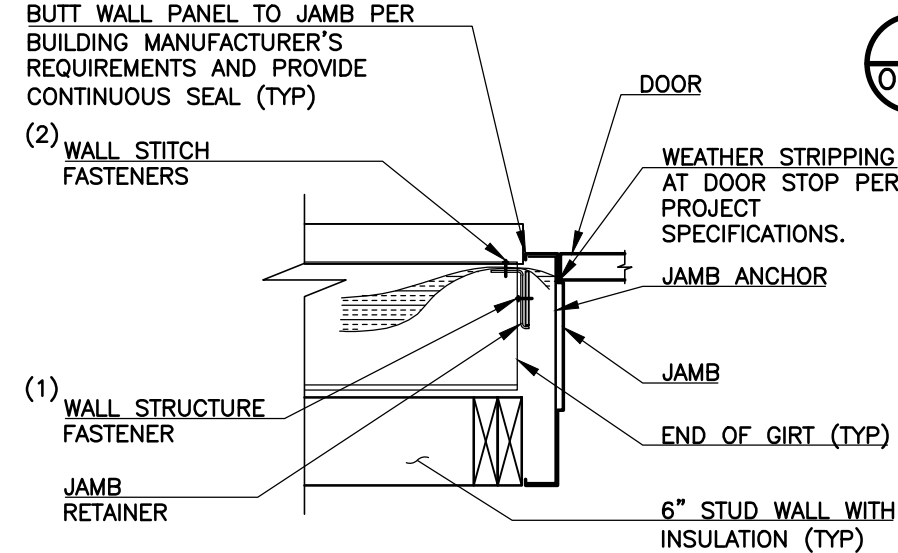
- REFER TO THE PROJECT MANUAL FOR HARDWARE SPECIFICATIONS.
- PROVIDE DOOR LATCH SHIELDS ON ALL OUTWARD OPENING EXTERIOR DOORS.
- ALL EXTERIOR MAN DOORS SHALL BE PROVIDED WITH MECHANICAL PUSHBUTTON SECURITY SYSTEMS PER SPECIFICATIONS.
- EXIT DEVICES ARE NOT SCHEDULED FOR ANY DOORS IN THE OPERATIONS BUILDING.

**REMOVED FIRE RATED DOORS**

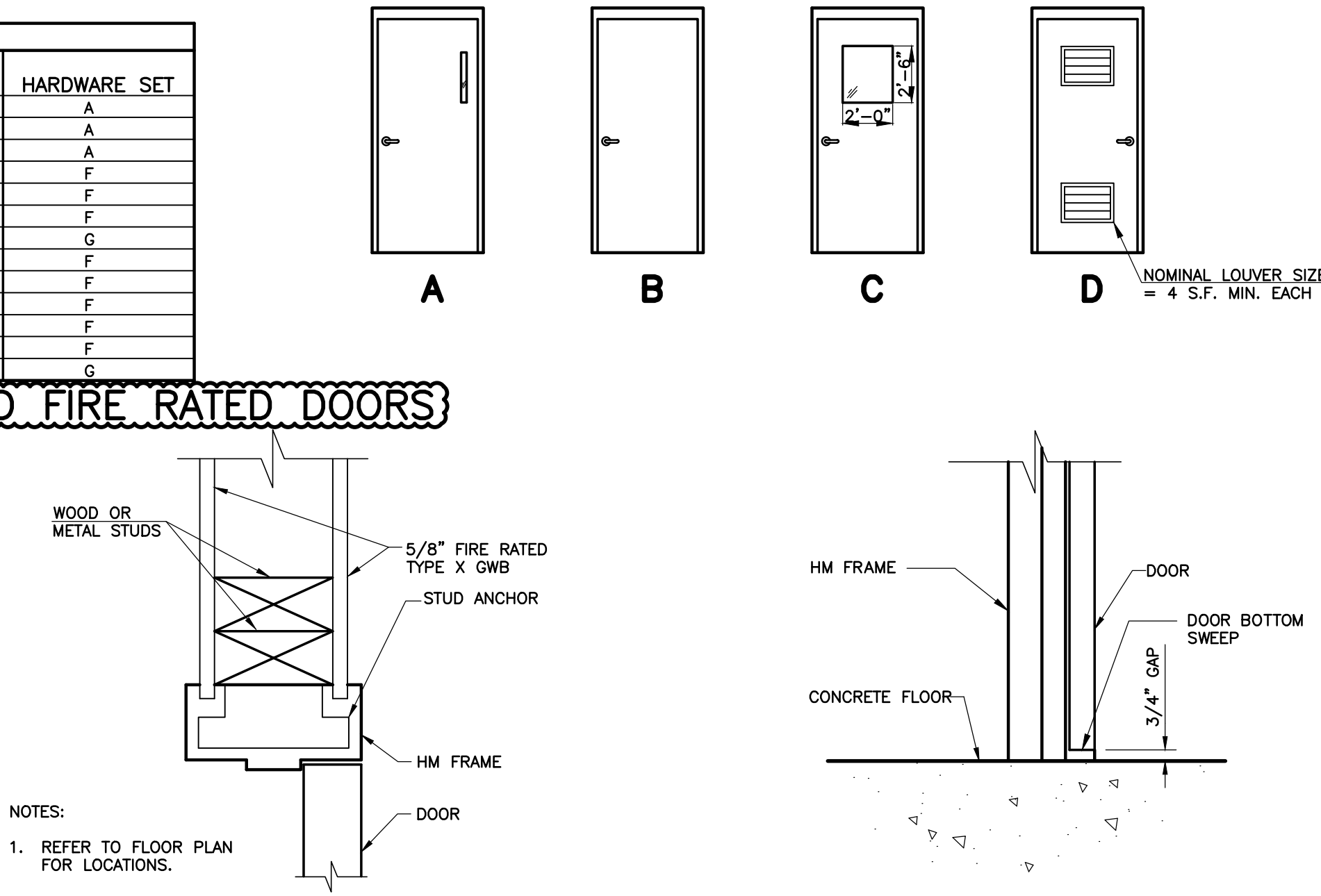
WINDOW SCHEDULE				
TAG	WIDTH	HEIGHT	TYPE	COMMENT
W-OP1	5'-0"	3'-0"	AWNING	1. 4'-6" AFF
W-OP2	5'-0"	3'-0"	AWNING	1. 4'-6" AFF
W-OP3	5'-0"	0'-8"	FIXED	1. 7'-11" AFF TO BOTTOM OF GLASS 2. SEE SHEET OP-1
W-OP4	5'-0"	0'-8"	FIXED	1. 7'-11" AFF TO BOTTOM OF GLASS 2. SEE SHEET OP-1
W-OP5	5'-0"	3'-0"	AWNING	1. 4'-6" AFF
W-OP6	3'-0"	3'-0"	FIXED	1. 4'-6" AFF 2. INTERIOR AT ENTRY
W-OP7	3'-0"	3'-0"	FIXED	1. 4'-6" AFF 2. INTERIOR AT ENTRY

ROOM FINISH SCHEDULE					
ROOM	FLOOR	WALLS	CEILING	REMARKS	
* EXTERIOR BLDG WALLS					
* INTERIOR BLDG WALLS					
WORK ROOM	X	X	X		
IT/SERVER ROOM	X	X	X		
PROCESS OPERATIONS CENTER	X	X	X		
LOCKER ROOM	X	X	X		
STAFF WORK ROOM	X	X	X		
MECHANICAL	X	X	X		
OFFICE NO. 1	X	X	X		
OPERATOR UTILITY ROOM	X	X	X		
SHOWER/TOILET ROOM	X	X	X		
ENTER WEST	X	X	X		
ENTER EAST	X	X	X		
VISITORS RESTROOM	X	X	X		

FLOOR SURFACE: THE CONCRETE FLOOR SURFACE SHALL BE FINISHED TO A STEEL TROWEL FINISH AND COLORED WITH AN ACID ETCH STAIN WITH COLOR SELECTION BY THE OWNER. THE ACID ETCH STAIN SHALL BE NEUTRALIZED AND (2) CLEAR COATS OF POLYURETHANE APPLIED. STAIN: PROLINE CONCRETE COLOR SYSTEMS AN APPROVED EQUIVALENT MAY BE USED IN LIEU OF THE STAIN REFERENCED. CLEAR COAT: APF POLYURETHANE 250 AN APPROVED EQUIVALENT MAY BE USED IN LIEU OF THE CLEAR COAT REFERENCED.

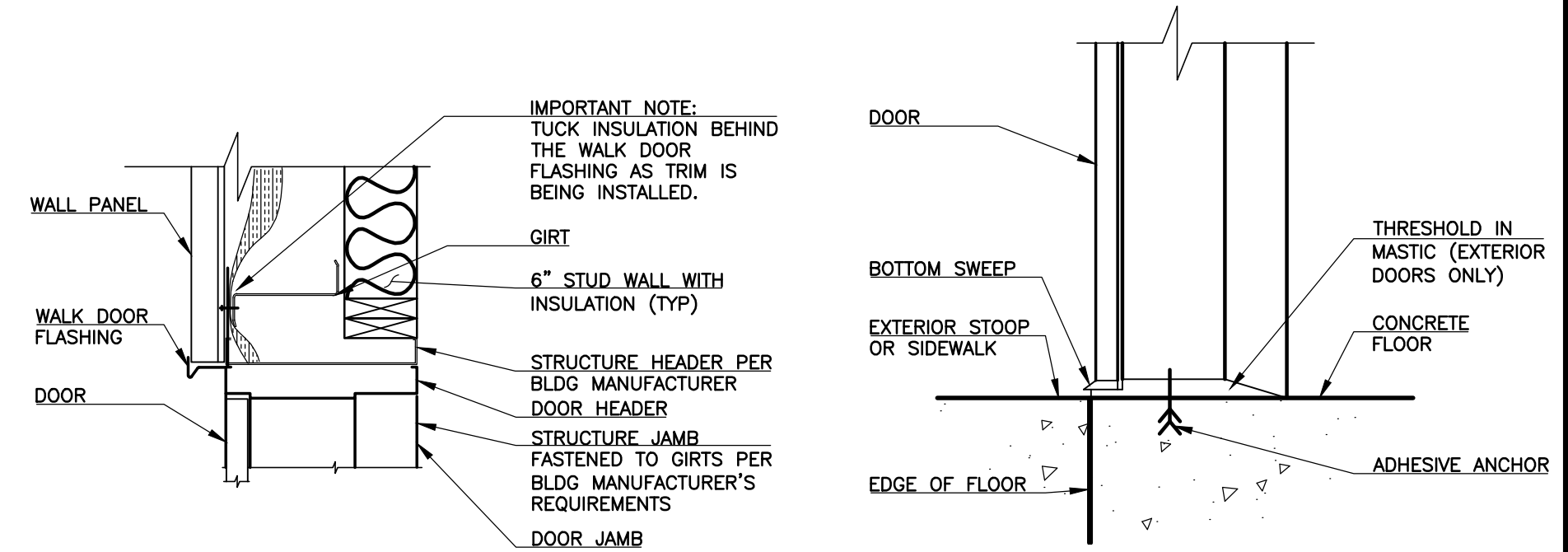


**5 EXTERIOR DOOR JAMB**  
EM-3 SCALE: NONE



**1 INTERIOR DOOR JAMB (HEAD SIM)**  
OP-3 SCALE: NONE

**2 INTERIOR DOOR SILL**  
OP-3 SCALE: NONE



**3 EXTERIOR DOOR HEAD**  
OP-3 SCALE: NONE

**4 EXTERIOR DOOR SILL**  
OP-3 SCALE: NONE

REVISIONS		
NO.	DATE	DESCRIPTION
1	06/29/2012	ISSUED FOR BUILDING PERMIT SUBMITTAL TO PPRBD (OPERATIONS BUILDING)
2	07/17/2012	REVISED PER PPRBD COMMENTS
3	08/15/2012	ISSUED FOR CONSTRUCTION PER PPRBD BUILDING PERMIT #135220 (OPERATIONS BLDG)

THIS DRAWING IS THE PROPERTY OF GMS, INC., AND IS NOT TO BE REPRODUCED, MODIFIED OR USED FOR ANY OTHER PROJECT OR EXTENSION OF THIS PROJECT EXCEPT BY AGREEMENT WITH THIS COMPANY.

**ARCHITECTURAL SCHEDULES, SECTIONS AND DETAILS**  
 HAROLD D. THOMPSON REGIONAL WATER RECLAMATION FACILITY  
 LOWER FOUNTAIN METROPOLITAN SEWAGE DISPOSAL DISTRICT

DRAWN: MAL  
 DESIGNED: DRF  
 CHECKED: RUS  
 DATE: APRIL 2012  
 PROJECT NO.: 20166.410  
 GMS FILE NO.: 2599

**GMS, INC.**  
 CONSULTING ENGINEERS  
 611 N. WEBER, SUITE 300  
 COLORADO SPRINGS, COLORADO 80903

SHEET  
**OP-3**  
 OF  
 -

XREF FILENAME: G:\  
 BASE DWG: G:\  
 PLOT STYLE FILE: 1000.ctb  
 FILENAME: G:\FMUSD0\20166\410\OP3\OP3.DWG