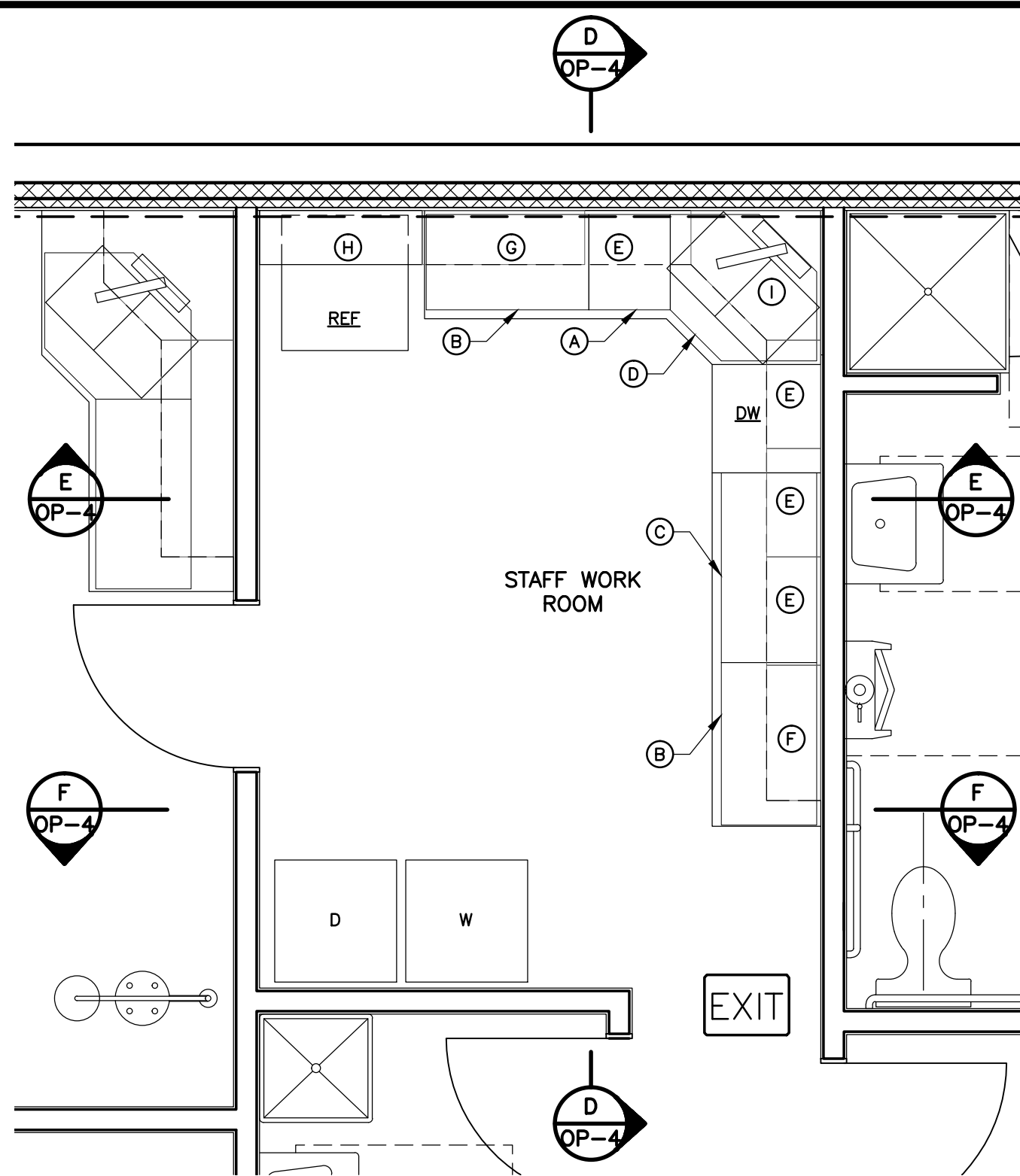


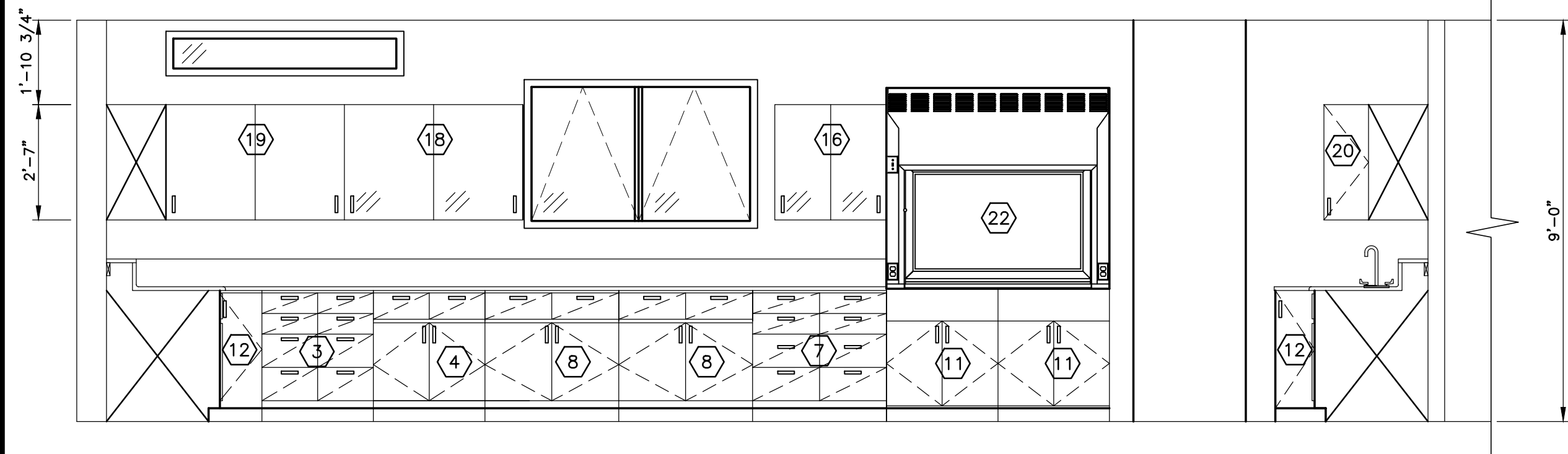
1 PROCESS OPERATIONS CENTER PLAN
OP-4 SCALE: 3/8" = 1'-0"



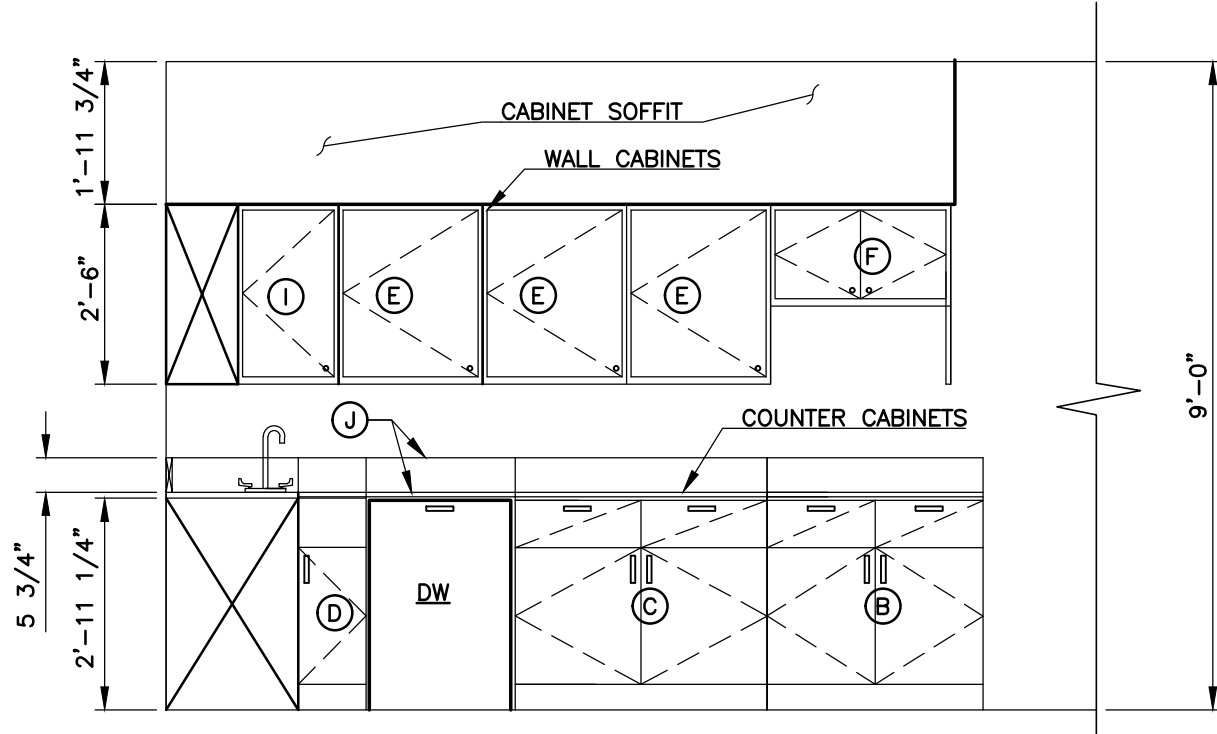
2 STAFF WORK ROOM PLAN
OP-4 SCALE: 3/8" = 1'-0"

LABORATORY FURNITURE SCHEDULE				
ITEM	DESCRIPTION	CATALOG NO. SEE NOTE 1	QTY.	REMARKS
1	18" BASE CABINET	145J2320	1	LOCATED IN ISLAND
2	18" BASE CABINET	137J2320	1	LOCATED IN ISLAND
3	30" BASE CABINET	348J5220	2	w/ ALL DRAWERS
4	30" BASE CABINET	348J5320	2	w/ 2 TOP DRAWERS AND BOTTOM DOORS
5	30" BASE CABINET	152J5320	1	LOCATED IN ISLAND
6	30" BASE CABINET	153J5320	1	LOCATED IN ISLAND
7	36" BASE CABINET	340J6220	2	w/ ALL DRAWERS
8	36" BASE CABINET	348J6320	2	w/ 2 TOP DRAWERS AND BOTTOM DOORS
9	36" BASE CABINET	194J6320	1	LOCATED IN ISLAND
10	42" BASE CABINET	352J7320	1	w/ FULL HEIGHT DRAWERS AND FULL HEIGHT DOOR
11	30" FUME HOOD BASE CABINET	121J5320	2	
12	21" CORNER CABINET	422J6320	2	1 CORNER CABINET IS TO ACCOMMODATE SINK
13	CABINET END PANEL	614J2230	3	
14	REAR FILLER PANEL	-	3	CABINET TO WALL PANEL; SEE NOTE 4 BELOW
15	SINK CABINET	118J9320	1	LOCATED IN ISLAND
16	30" WALL CASE	722J5360	1	w/ GLASS SLIDING DOORS
17	30" WALL CASE	715J536M	2	w/ SOLID SLIDING DOORS
18	48" WALL CASE	722J8360	1	w/ GLASS SLIDING DOORS
19	48" WALL CASE	715J836M	2	w/ SOLID SLIDING DOORS
20	16" CORNER CABINET	422J6320	2	w/ SOLID HINGE DOOR
21	WALL CASE END PANEL	614J1731	5	
22	SUPREME AIR FUME HOOD	H05-5460-00	1	5'-0" WIDE w/ AUXILIARY AIR HOOD
23	TALL CASE	806J6930	1	TO HAVE LEG ASSEMBLY CATALOG NO. 522J4620 AT END OF DRAWER FRAME
24	DRAWER FRAME	503J2810	1	
25	FILLER PANEL	612J4320	1	TO BE LOCATED AT END OF ISLAND CABINETS
26	KNEE SPACE PANEL	616J5320	1	LOCATED BETWEEN CABINETS 1 AND 2 UNDER OPENING
27	KNEE SPACE RAIL	500J4020	1	
28	EYE/FACE WASH & SHOWER	33L30000	1	
29	GLASSWARE PEG BOARD	52L77600	1	w/ 6-1/2" PEGS / TO BE INSTALLED AGAINST CHASE
30	STEEL CHASE	621S SERIES	1	PRIOR TO ORDER, CONTRACTOR TO DETERMINE HEIGHT REQUIRED
31	SHELVES	-	1	12"x56" EPOXY RESIN WITH BRACKETS
32	GLASSWARE WASHER	-	1	FUTURE - BY OWNER
33	INCUBATOR	-	1	FURNISHED BY OWNER AND INSTALLED BY CONTRACTOR
34	VACUUM PUMP	-	1	FURNISHED BY OWNER AND INSTALLED BY CONTRACTOR

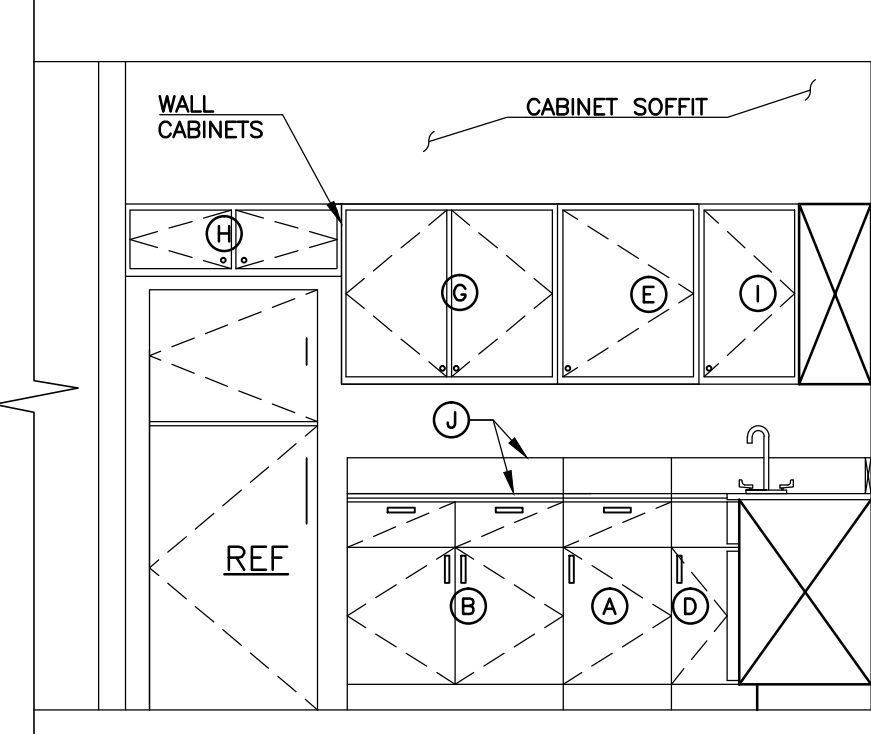
- NOTES:
- ALL CATALOG NUMBER REFERENCES ARE FROM THERMO SCIENTIFIC A SUBSIDIARY OF FISHER SCIENTIFIC. ALL CASE WORK IS BASED ON THERMO SCIENTIFIC FLUSH OVERLAY STEEL STYLE. LABORATORY FURNITURE AND EQUIPMENT BY OTHER MANUFACTURERS OF EQUAL QUALITY AND FUNCTION ARE ACCEPTABLE.
 - WORK TOP CONFIGURATION TO BE THERMO TYPE C ARRANGEMENT FOR WALL LOCATIONS HAVING AN 8-INCH WIDE BY 6-INCH HIGH BACK SHELF, AND CUSTOM TOP FOR ISLAND CONFIGURATION.
 - SEE SECTION 12346 FOR SPECIFICATIONS.
 - END PANELS SHALL BE METAL AND PROVIDE FULL COVERAGE OF THE END BASE UNIT AND CHASE SECTION.



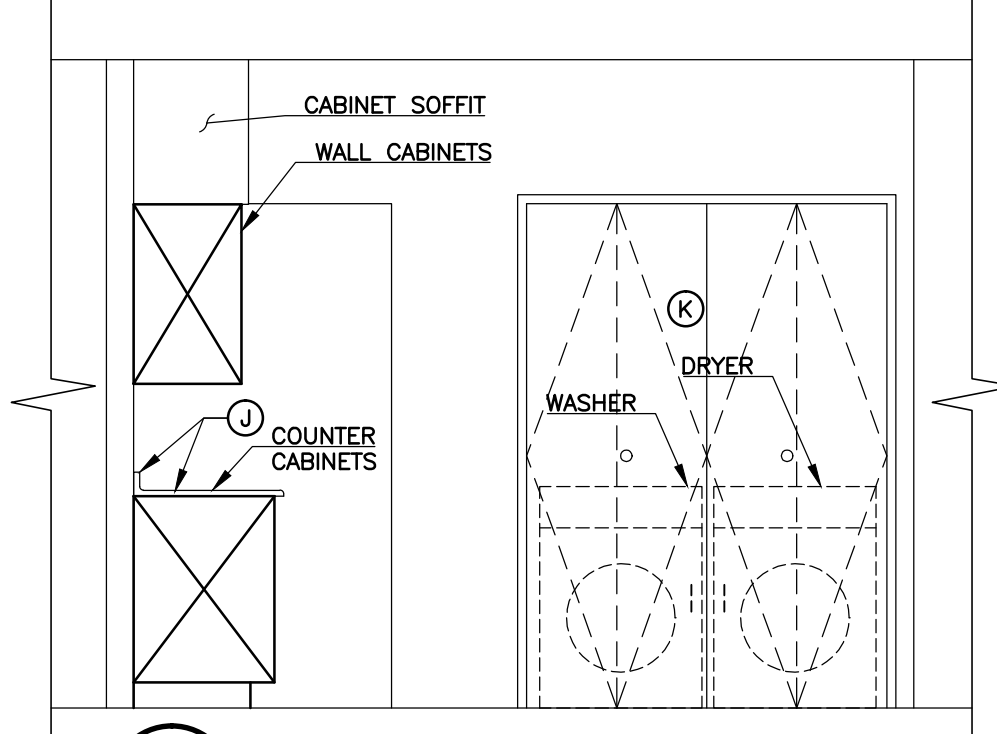
A SECTION
OP-4 SCALE: 3/8" = 1'-0"



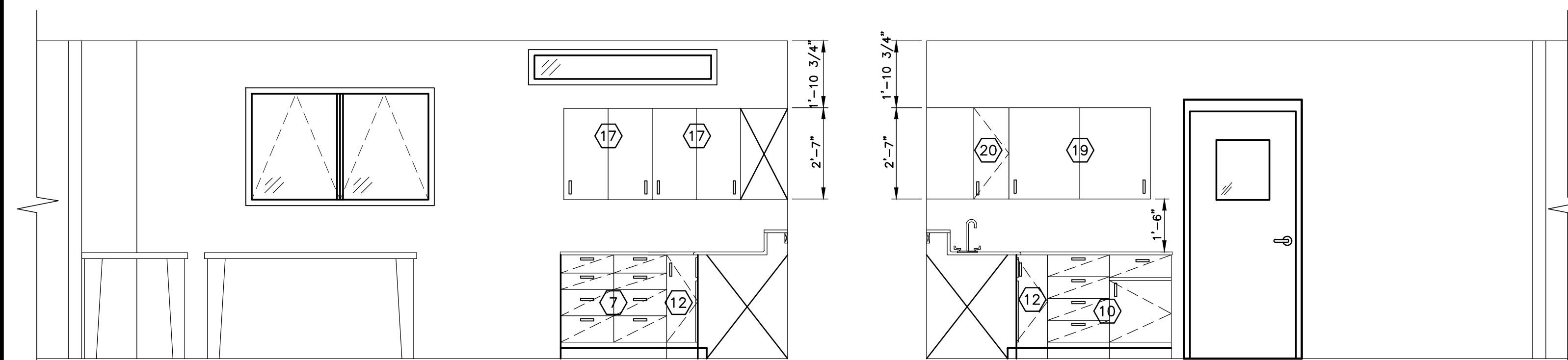
D STAFF WORK ROOM SECTION
OP-4 SCALE: 3/8" = 1'-0"



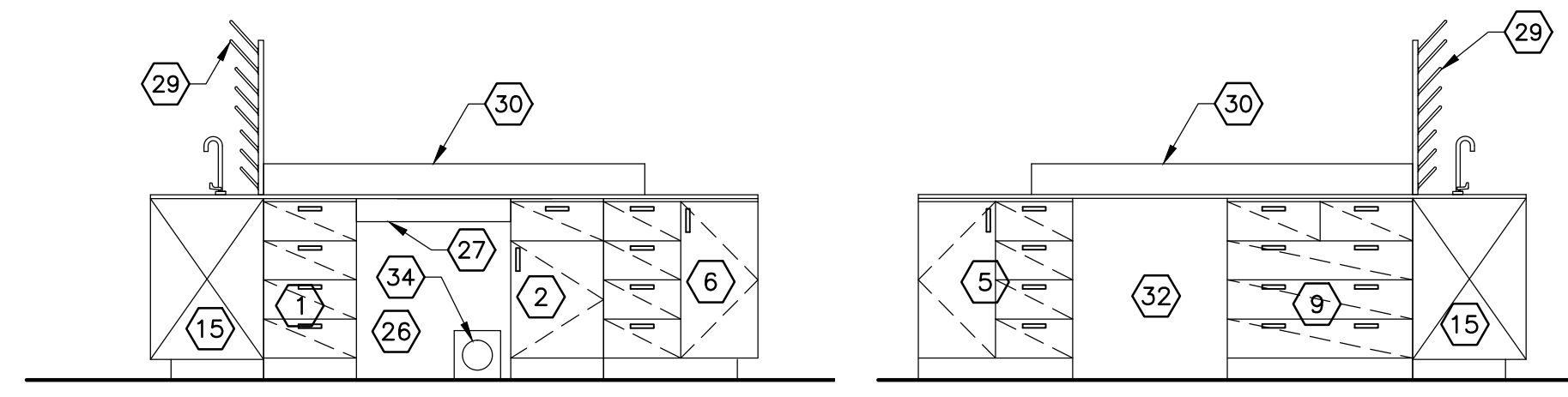
E STAFF WORK ROOM SECTION
OP-4 SCALE: 3/8" = 1'-0"



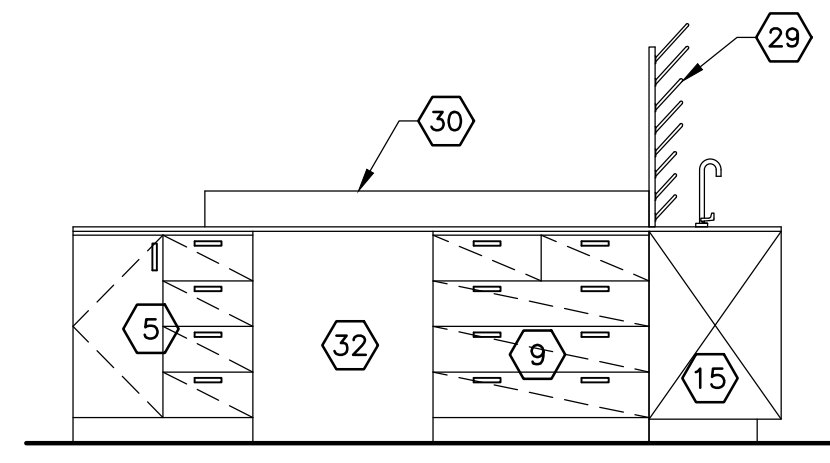
F STAFF WORK ROOM SECTION
OP-4 SCALE: 3/8" = 1'-0"



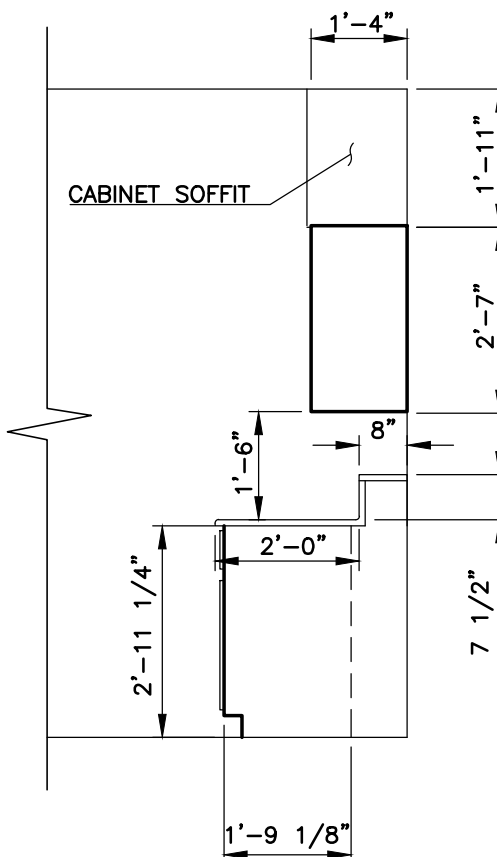
B SECTION
OP-4 SCALE: 3/8" = 1'-0"



G SECTION
OP-4 SCALE: 3/8" = 1'-0"



H SECTION
OP-4 SCALE: 3/8" = 1'-0"



I SECTION
OP-4 SCALE: 3/8" = 1'-0"

STAFF WORK ROOM SCHEDULE	
ITEM	DESCRIPTION
A	18" CABINET BASE w/ DRAWER
B	36" CABINET BASE w/ DRAWER
C	42" CABINET BASE w/ DRAWER
D	CORNER SINK CABINET
E	24"x30"x12" WALL CABINET
F	30"x12"x12" MICROWAVE CABINET
G	36"x30"x12" WALL CABINET
H	36"x12"x12" REFRIGERATOR CABINET
I	CORNER WALL CABINET
J	LAMINATE COUNTERTOP w/4" BACK SPLASH
K	DOUBLE BI-FOLD DOOR OPENING
L	TABLE (PROVIDED BY OWNER)
M	CABINET MICROWAVE (PROVIDED BY OWNER)
DW	DRYER (PROVIDED BY OWNER)
DW	DISHWASHER (PROVIDED BY OWNER)
REF	REFRIGERATOR (PROVIDED BY OWNER)
W	WASHER (PROVIDED BY OWNER)

- CONTRACTOR TO OBTAIN CABINETS AND COUNTERTOPS THROUGH A HOME IMPROVEMENTS WAREHOUSE.
- CONFIGURATION OF CABINETS MAY BE MODIFIED DEPENDING ON ACTUAL CABINET UNIT DIMENSIONS.

REVISIONS		
NO.	DATE	DESCRIPTION
1	06/29/2012	ISSUED FOR BUILDING PERMIT SUBMITTAL TO PPRBD (OPERATIONS BUILDING)
2	07/24/2012	ISSUED FOR PREPARATION OF CMO
3	08/15/2012	ISSUED FOR CONSTRUCTION PER PPRBD BUILDING PERMIT #135220 (OPERATIONS BLDG)

THIS DRAWING IS THE PROPERTY OF GMS, INC., AND IS NOT TO BE REPRODUCED, MODIFIED OR USED FOR ANY OTHER PROJECT OR EXTENSION OF THIS PROJECT EXCEPT BY AGREEMENT WITH THIS COMPANY.

OPERATIONS BUILDING CASEWORK, ARCHITECTURAL PLAN AND ELEVATIONS, AND SCHEDULES
HAROLD D. THOMPSON REGIONAL WATER RECLAMATION FACILITY
LOWER FOUNTAIN METROPOLITAN SEWAGE DISPOSAL DISTRICT

DRAWN: SKC
DESIGNED: DRF
CHECKED: RJS
DATE: APRIL 2012
PROJECT NO.: 20166.410
GMS FILE NO.: 2599

GMS, INC.
CONSULTING ENGINEERS
611 N. WEBER, SUITE 300
COLORADO SPRINGS, COLORADO 80903

SHEET
OP-4
OF
-