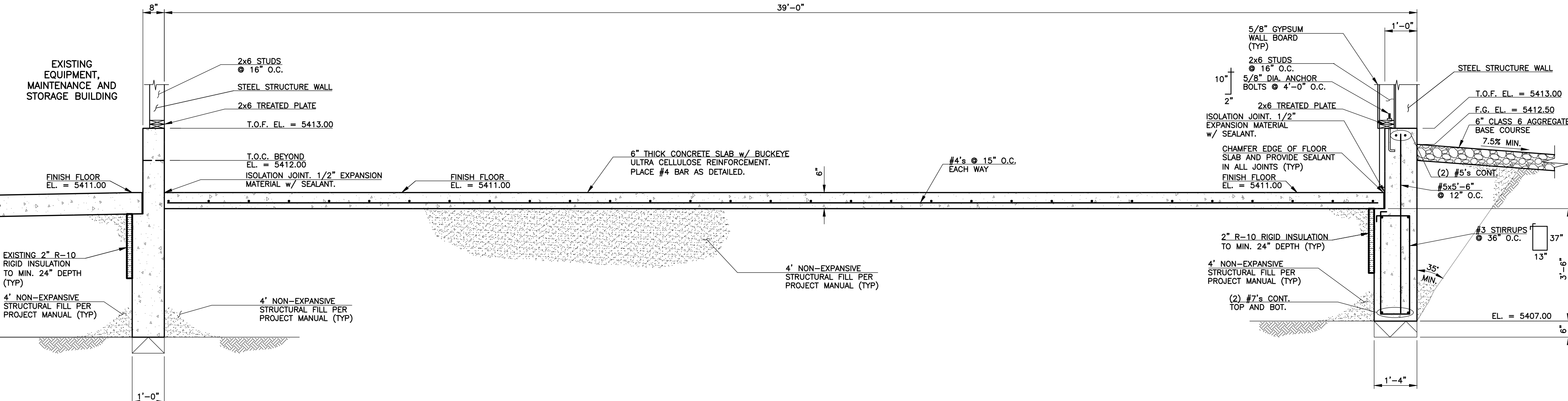
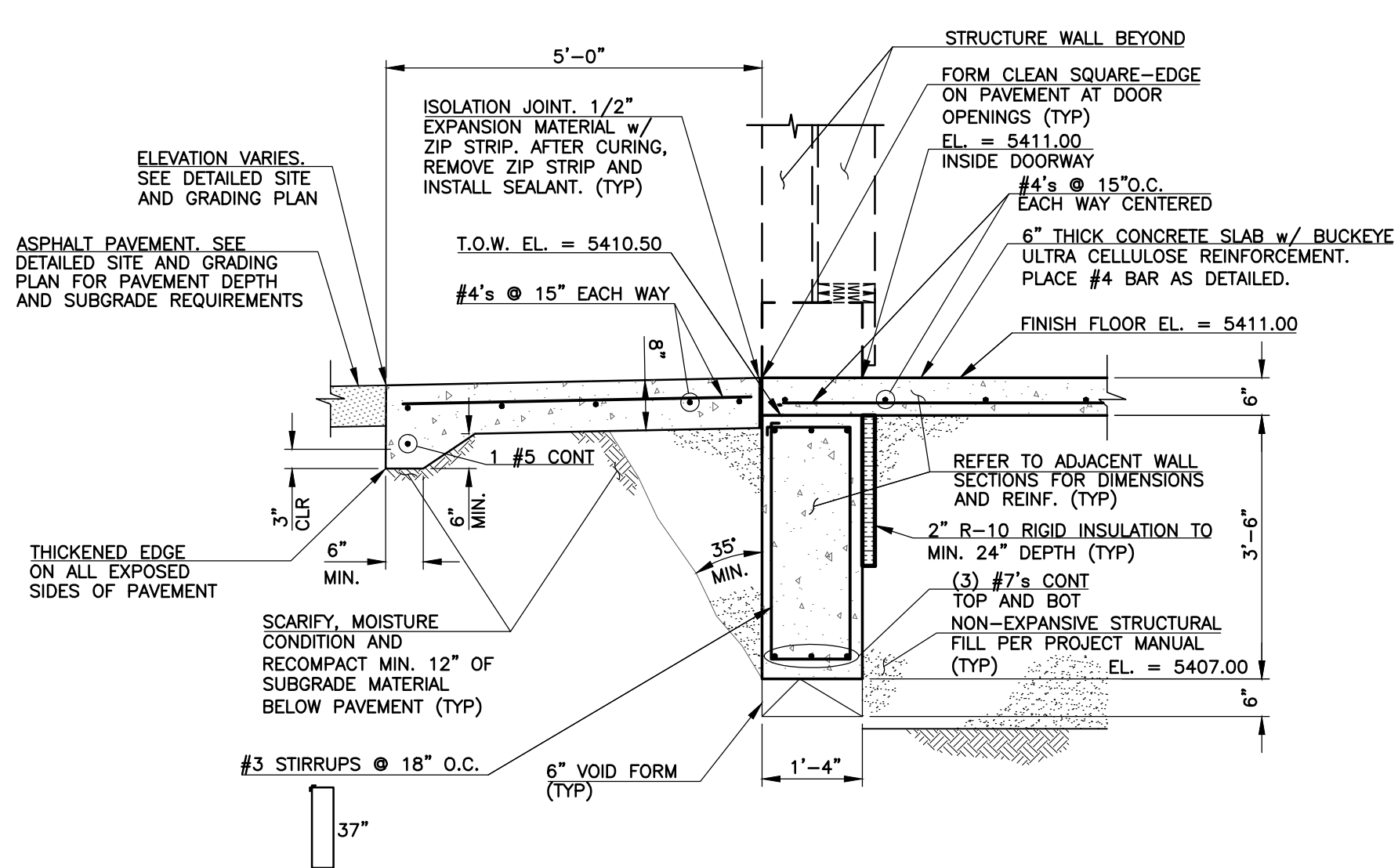


A SECTION
 OP-6 SCALE: 1/2" = 1'-0"

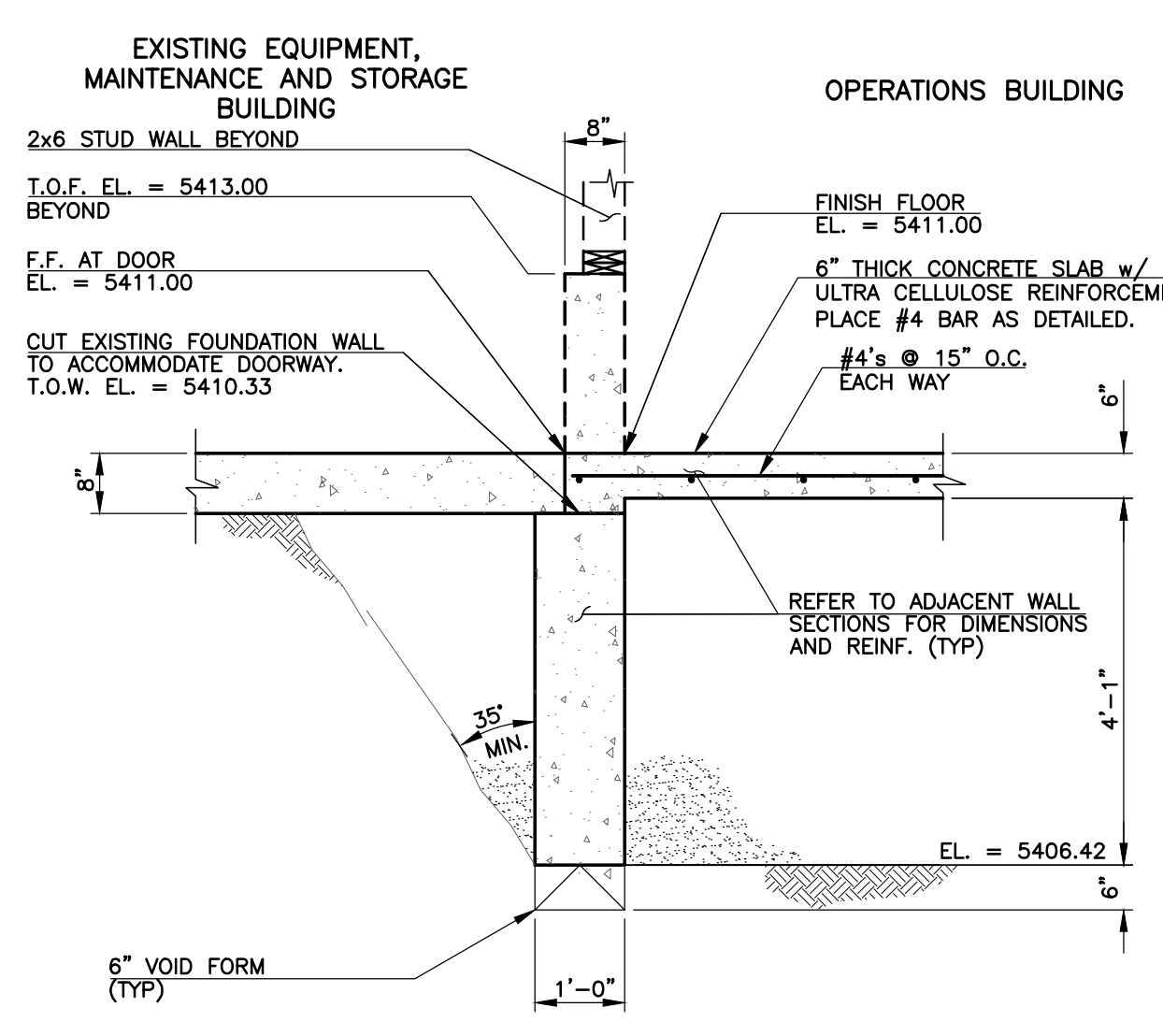


B SECTION
 OP-6 SCALE: 1/2" = 1'-0"

- NOTES:**
1. THE 6" THICK CONCRETE SLAB SHALL RECEIVE A STEEL TROWEL FINISH PREPARED TO RECEIVE AN ACID ETCH STAIN.
 2. THE CONTRACTOR SHALL SUBMIT A JOINTING PLAN PRIOR TO CONCRETE SLAB PLACEMENT.
 3. VERIFY SIZE OF ANY PENETRATIONS REQUIRED FOR PLUMBING AND ELECTRICAL FACILITIES.
 4. REFER TO DRAIN AND VENT PLAN FOR LOCATIONS AND ELEVATIONS FOR DRAINS, CLEANOUTS, ETC.



C APRON SECTION AT DOOR OPENING
 OP-6 SCALE: 1/2" = 1'-0"



D SECTION
 OP-6 SCALE: 1/2" = 1'-0"

REVISIONS		
NO.	DATE	DESCRIPTION
1	06/07/2012	ISSUED FOR VALUE ENGINEERING
2	06/29/2012	ISSUED FOR BUILDING PERMIT SUBMITTAL TO PRRBD (OPERATIONS BUILDING)
3	08/15/2012	ISSUED FOR CONSTRUCTION PER PRRBD BUILDING PERMIT #135220 (OPERATIONS BLDG)

THIS DRAWING IS THE PROPERTY OF GMS, INC., AND IS NOT TO BE REPRODUCED, MODIFIED OR USED FOR ANY OTHER PROJECT OR EXTENSION OF THIS PROJECT EXCEPT BY AGREEMENT WITH THIS COMPANY.

STRUCTURAL SECTIONS
 HAROLD D. THOMPSON REGIONAL WATER RECLAMATION FACILITY
 LOWER FOUNTAIN METROPOLITAN SEWAGE DISPOSAL DISTRICT

DRAWN	SKC
DESIGNED	MG/JP
CHECKED	MG
DATE	MAY 2012
PROJECT NO.	20166.410
GMS FILE NO.	2599

GMS, INC.
 CONSULTING ENGINEERS
 611 N. WEBER, SUITE 300
 COLORADO SPRINGS, COLORADO 80903

SHEET
OP-6
 OF
 -

XREF FILENAME: G:\
 BASE DWG: G-1
 PLOT STYLE FILE: 1000.ctb
 FILENAME: G:\L\FMSD\20166\410\OP6\OP6.DWG