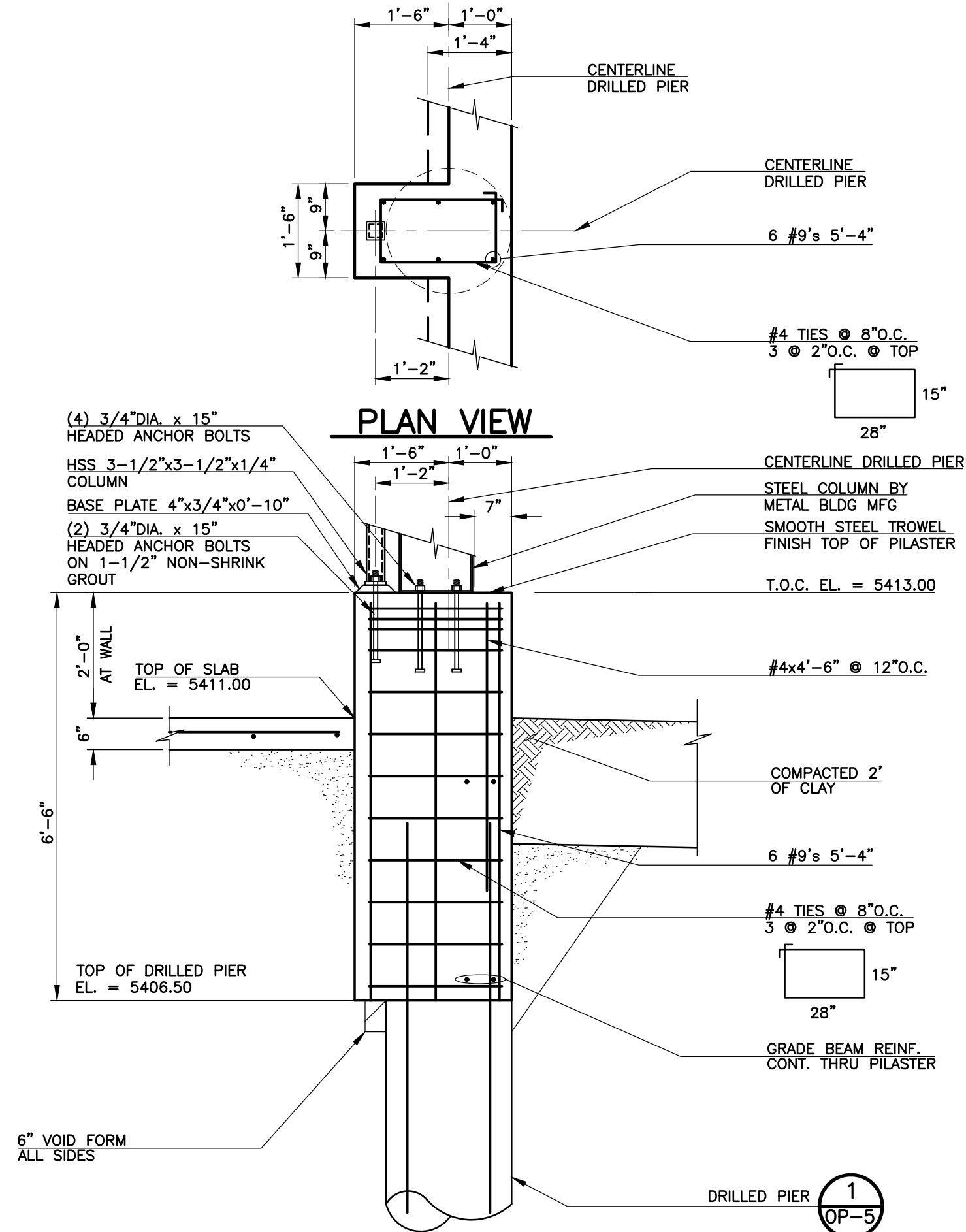
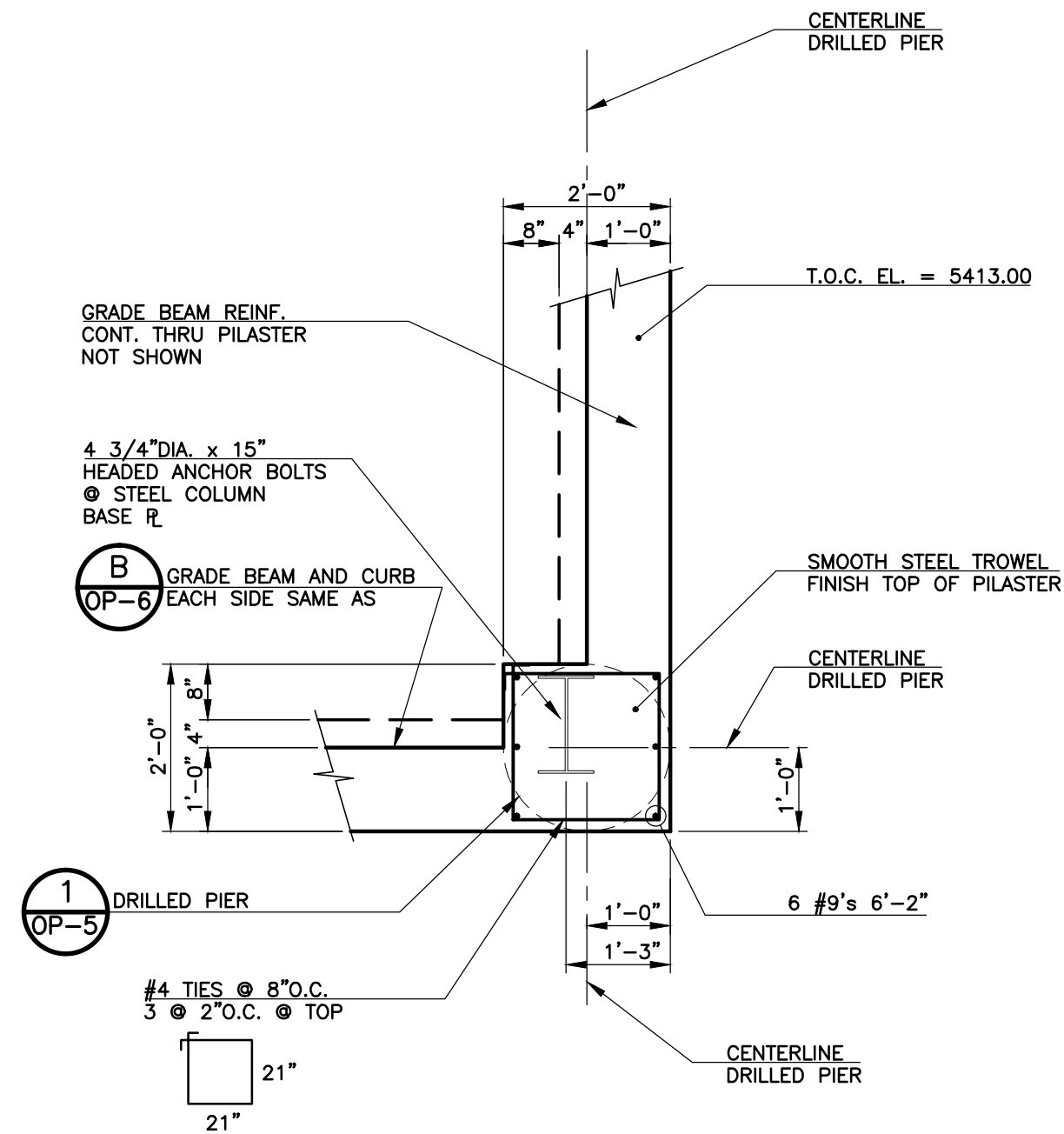


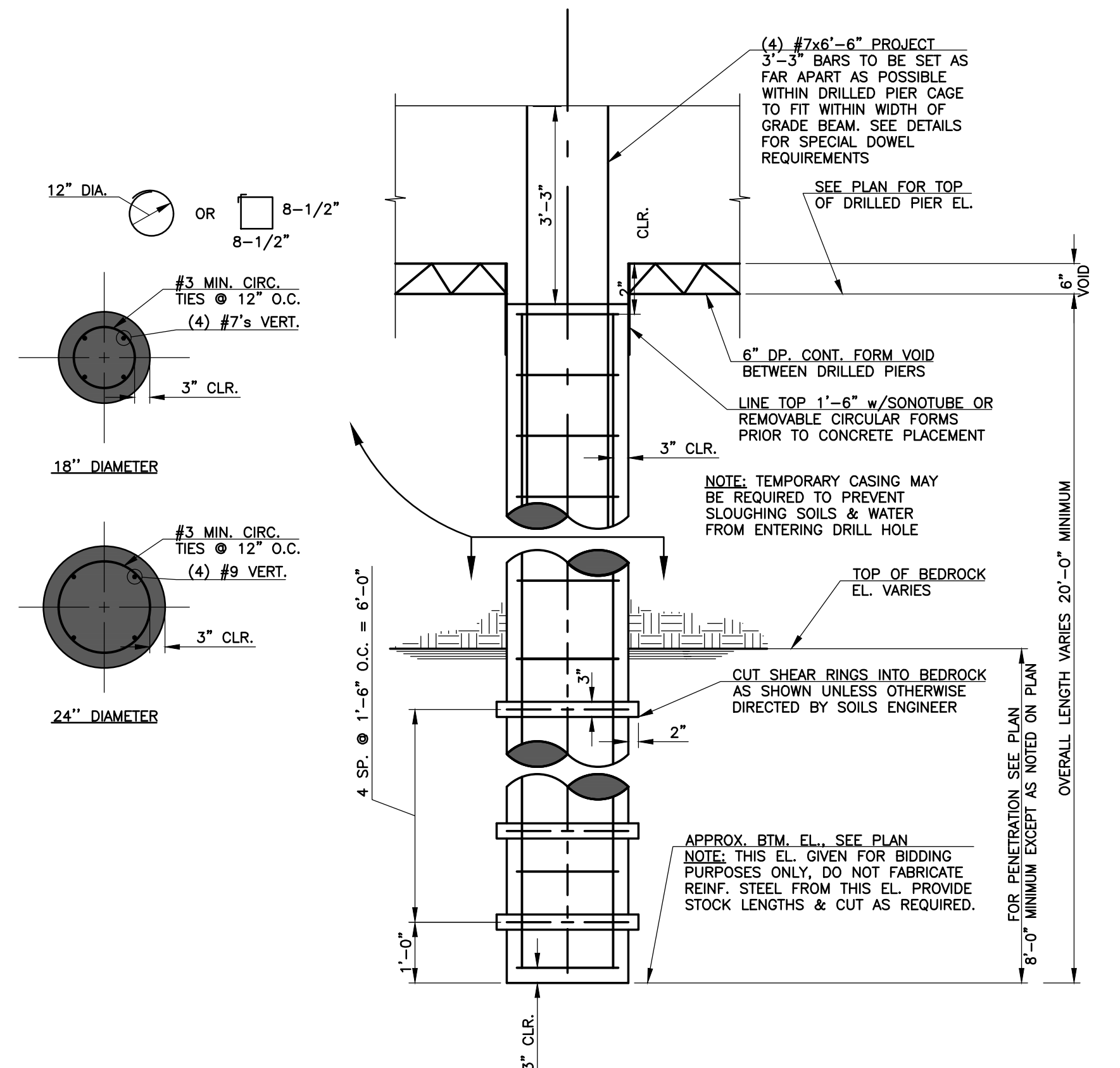
A CONCRETE PILASTER SECTION
SCALE: 1/2" = 1'-0"



B CONCRETE PILASTER SECTION
SCALE: 1/2" = 1'-0"



C CONCRETE PILASTER SECTION
SCALE: 1/2" = 1'-0"



- NOTES:**
- A REPRESENTATIVE OF THE SOILS ENGINEER SHALL VERIFY THAT THE REQUIRED MINIMUM PENETRATION INTO BEDROCK HAS BEEN ACHIEVED.
 - CONCRETE FOR ALL DRILLED PIERS SHALL HAVE A MINIMUM COMPRESSIVE STRENGTH IN 28 DAYS OF 3750 p.s.i. AND HAVE A SLUMP OF 5"-7". REFER TO PROJECT MANUAL FOR REQUIRED SPECIFICATIONS.

1 TYPICAL DRILLED PIER DETAIL
SCALE: NONE

REVISIONS		
NO.	DATE	DESCRIPTION
1	06/07/2012	ISSUED FOR VALUE ENGINEERING
2	06/29/2012	ISSUED FOR BUILDING PERMIT SUBMITTAL TO PRBD (OPERATIONS BUILDING)
3	06/15/2012	ISSUED FOR CONSTRUCTION PER PRBD BUILDING PERMIT #135220 (OPERATIONS BLDG)

THIS DRAWING IS THE PROPERTY OF GMS, INC., AND IS NOT TO BE REPRODUCED, MODIFIED OR USED FOR ANY OTHER PROJECT OR EXTENSION OF THIS PROJECT EXCEPT BY AGREEMENT WITH THIS COMPANY.

© 2012 GMS, INC.

STRUCTURAL SECTIONS AND DETAILS
HAROLD D. THOMPSON REGIONAL WATER RECLAMATION FACILITY
LOWER FOUNTAIN METROPOLITAN SEWAGE DISPOSAL DISTRICT

DRAWN: SKC
DESIGNED: MG/JP
CHECKED: MG
DATE: MAY 2012
PROJECT NO.: 20166.410
GMS FILE NO.: 2599

GMS, INC.
CONSULTING ENGINEERS
611 N. WEBER, SUITE 300
COLORADO SPRINGS, COLORADO 80903

SHEET
OP-7
OF
—

XREF FILENAME: G:\
BASE DWG: G:\
PLOT STYLE FILE: 10SSC.DWG
FILENAME: G:\FMSD\20166\410\OP7\OP7.DWG