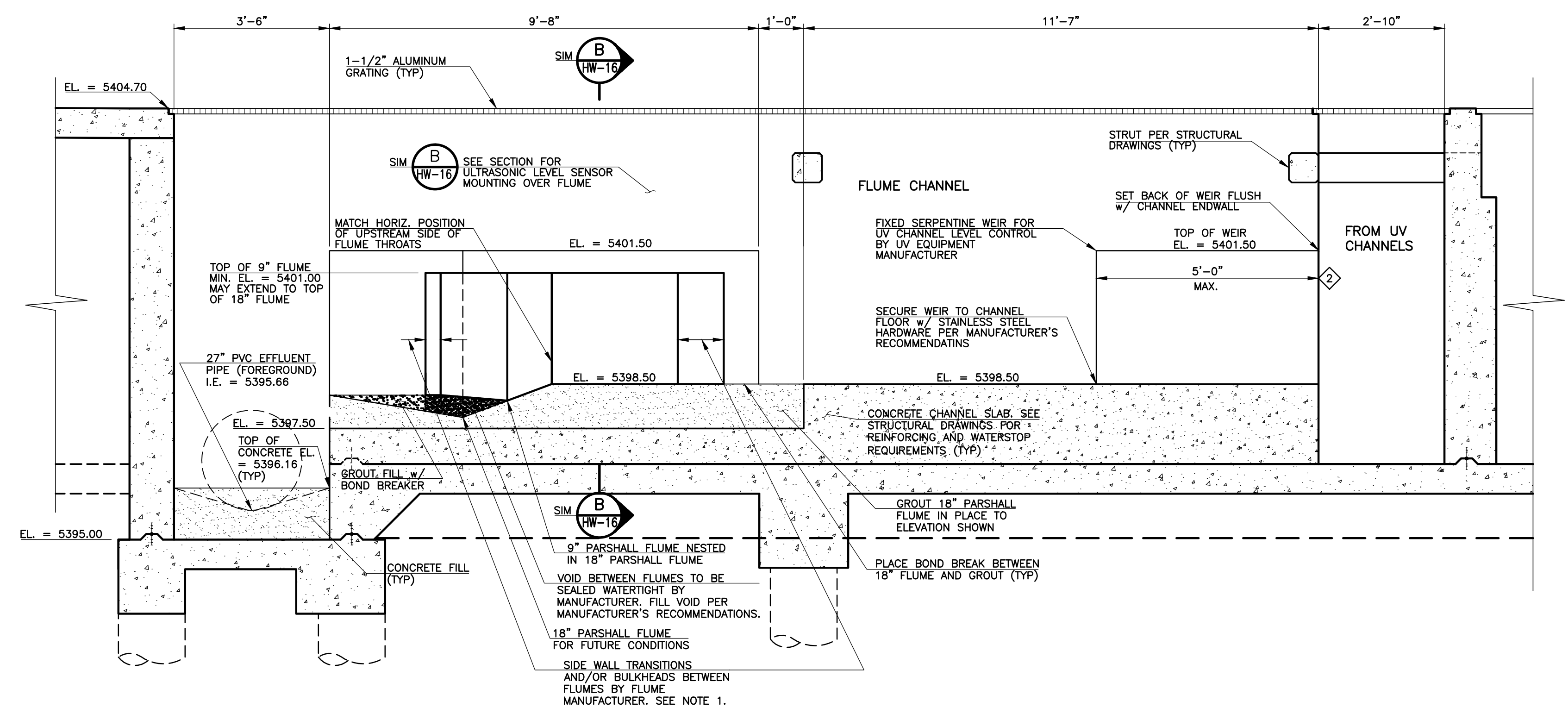


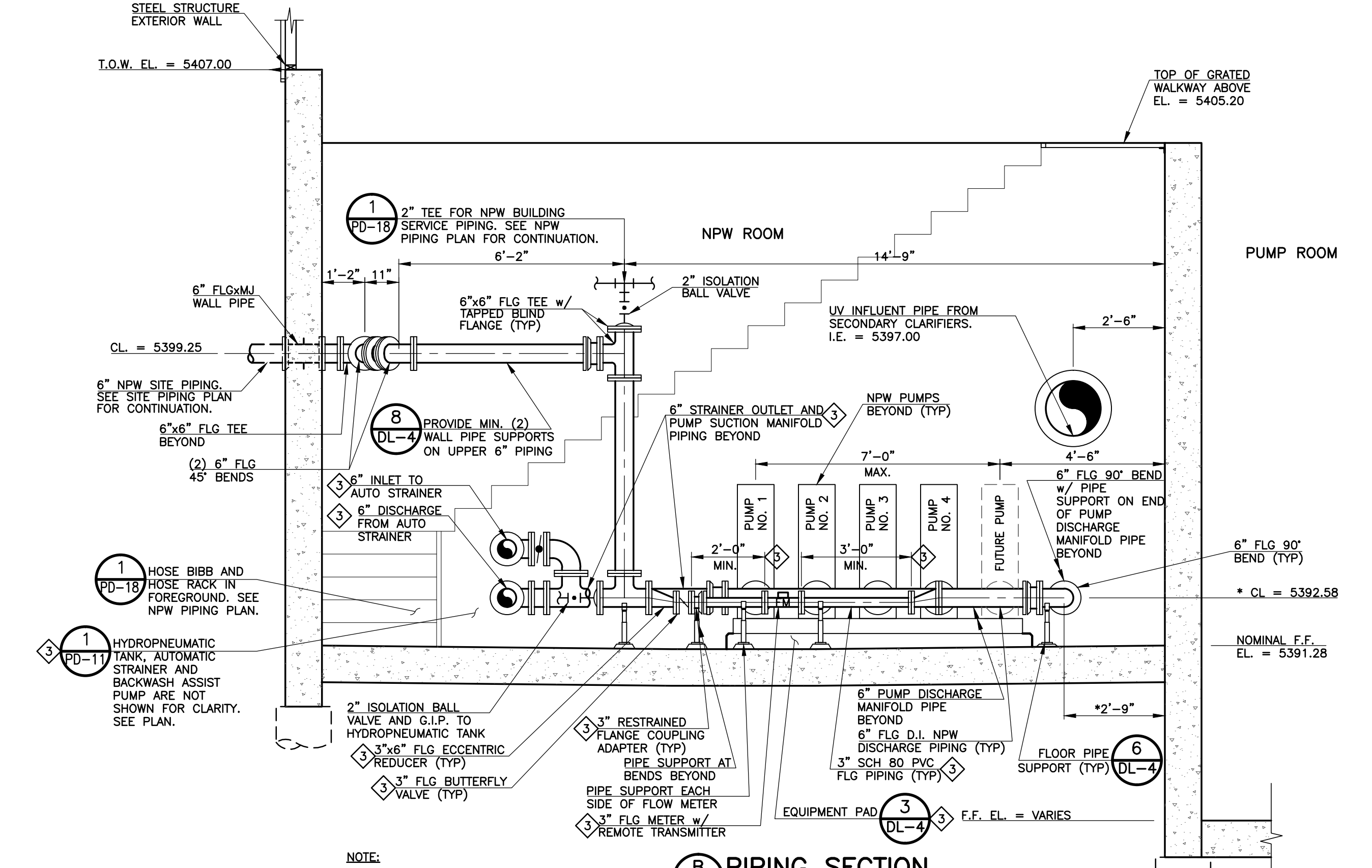
- NOTE:
- STAIRS NOT SHOWN FOR CLARITY.
  - \* INDICATES VERIFICATION REQUIRED, PRIOR TO CONSTRUCTION, VERIFY ALL DIMENSIONS AND ELEVATIONS RELATIVE TO THE ACTUAL PUMPS AND EQUIPMENT PROVIDED TO ENSURE PROPER ALIGNMENTS AND INSTALLATION CONDITIONS.
  - FABRICATED STEEL STAND FOR AUTOMATIC STRAINER SHALL BE OF WELDED CONSTRUCTION WITH 5/8" THICK BEARING PLATE DRILLED FOR THE MOUNTING POINTS OF THE STRAINER FEET, (4) 3"x3"x1/4" HSS LEGS, 3/8" BOTTOM PLATE AND 1" HDPE OR GROUT PAD BETWEEN IT AND THE FLOOR. SECURE BOTTOM PLATE TO FLOOR WITH MINIMUM (4) 3/4" DIAMETER STAINLESS STEEL ANCHORS. PROVIDE MAXIMUM 4" HOLE IN BEARING PLATE FOR BACKWASH PIPING AS NECESSARY FOR EQUIPMENT SUPPLIED. PRIME AND PAINT STAND WITH EPOXY COATING SYSTEM SPECIFIED FOR CHEMICAL FEED AREAS IN THE PROJECT MANUAL.

**A PIPING SECTION**  
 PD-13 SCALE: 3/8" = 1'-0"



- NOTE:
- SIDEWALL TRANSITIONS/BULKHEADS TO BE PROVIDED ON UPSTREAM AND DOWNSTREAM SIDES OF 9" FLUME. SIDEWALL TRANSITIONS/BULKHEADS SHALL INCLUDE FLOOR EXTENSIONS OR HAVE THE GROUT FLOOR NEATLY PLACED BETWEEN THEM SO THE FLOW THROUGH THE FLUME AND ITS MEASUREMENT ARE NOT ADVERSELY EFFECTED.

**C EFFLUENT FLUME CHANNEL SECTION**  
 PD-13 SCALE: 1/2" = 1'-0"



- NOTE:
- INLET AND DISCHARGE PIPING ON AUTOMATIC STRAINER ARE SHOWN OUT OF POSITION FOR CLARITY. SEE EQUIPMENT AND PIPING PLAN FOR PROPER LOCATION.

**B PIPING SECTION**  
 PD-13 SCALE: 3/8" = 1'-0"

REVISIONS		
NO.	DATE	DESCRIPTION
1	01/25/2012	ISSUED FOR PD BUILDING VALUE ENGINEERING REVIEW AND COMMENTS
2	03/13/2012	ISSUED WITH UV EQUIPMENT SHOP SUBMITTAL PRELIMINARY REVIEW LETTER
3	04/18/2012	ISSUED FOR BUILDING PERMIT SUBMITTAL TO PRRBD (PUMPING AND DISINFECTION BLDG)
4	05/21/2012	ISSUED FOR CONSTRUCTION PER PRRBD BLDG PERMIT #88993 (PUMP AND DISINFECTION BLDG)

THIS DRAWING IS THE PROPERTY OF GMS, INC., AND IS NOT TO BE REPRODUCED, MODIFIED OR USED FOR ANY OTHER PROJECT OR EXTENSION OF THIS PROJECT EXCEPT BY AGREEMENT WITH THIS COMPANY.

© 2011 GMS, INC.

**PIPING PLAN AND SECTIONS**  
 HAROLD D. THOMPSON REGIONAL WATER RECLAMATION FACILITY  
 LOWER FOUNTAIN METROPOLITAN SEWAGE DISPOSAL DISTRICT

DRAWN	SKC
DESIGNED	MAM
CHECKED	JRS
DATE	2011
PROJECT NO.	20166.372
GMS FILE NO.	2599

**GMS, INC.**  
 CONSULTING ENGINEERS  
 611 N. WEBER, SUITE 300  
 COLORADO SPRINGS, COLORADO 80903

SHEET **PD-13** OF **—**

XREF FILENAME: G:\...  
 BASE DWG: G:\...  
 PLOT STYLE FILE: 1000.ctb  
 FILENAME: G:\LFWSD\20166\372\PD13\PD13.DWG