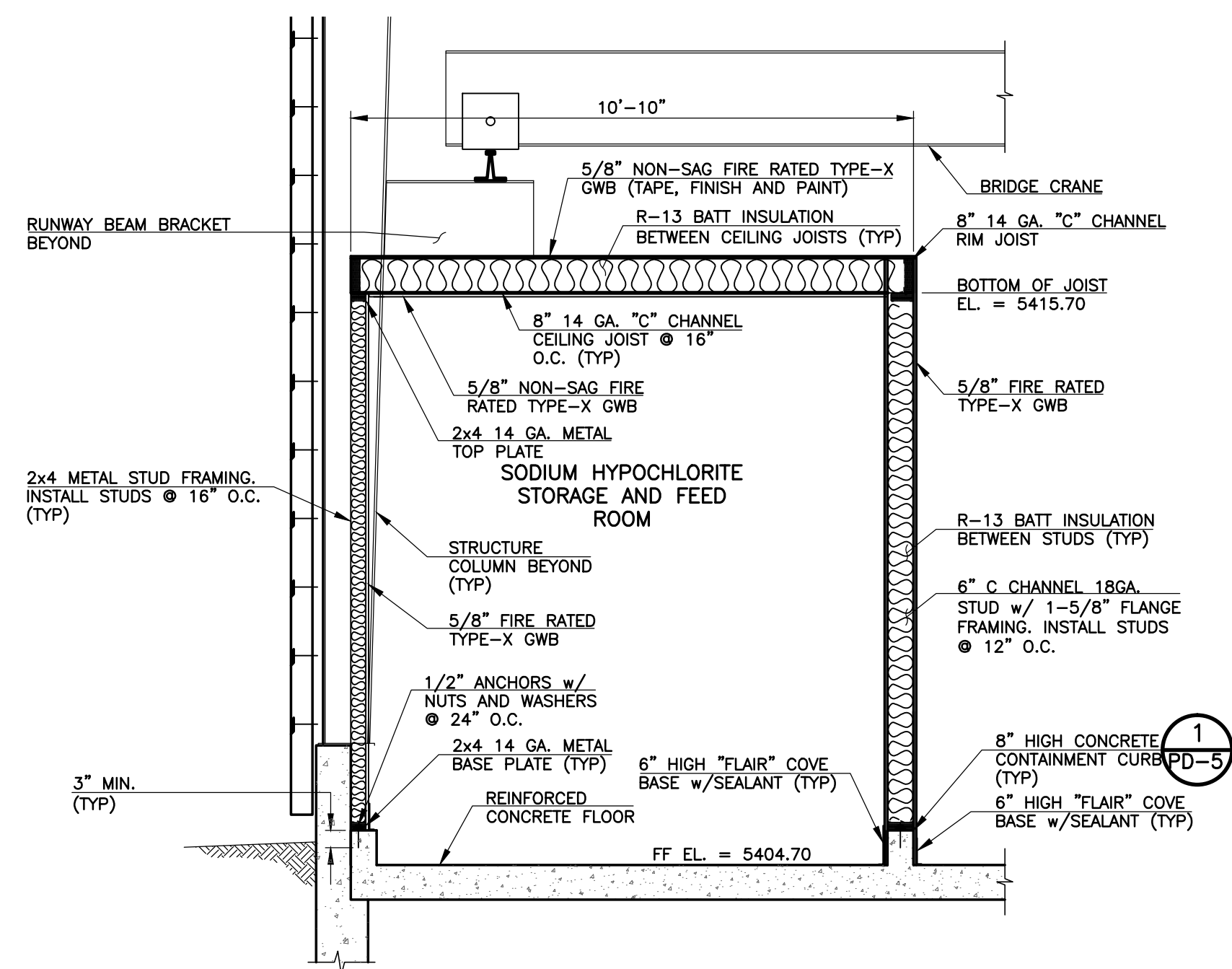
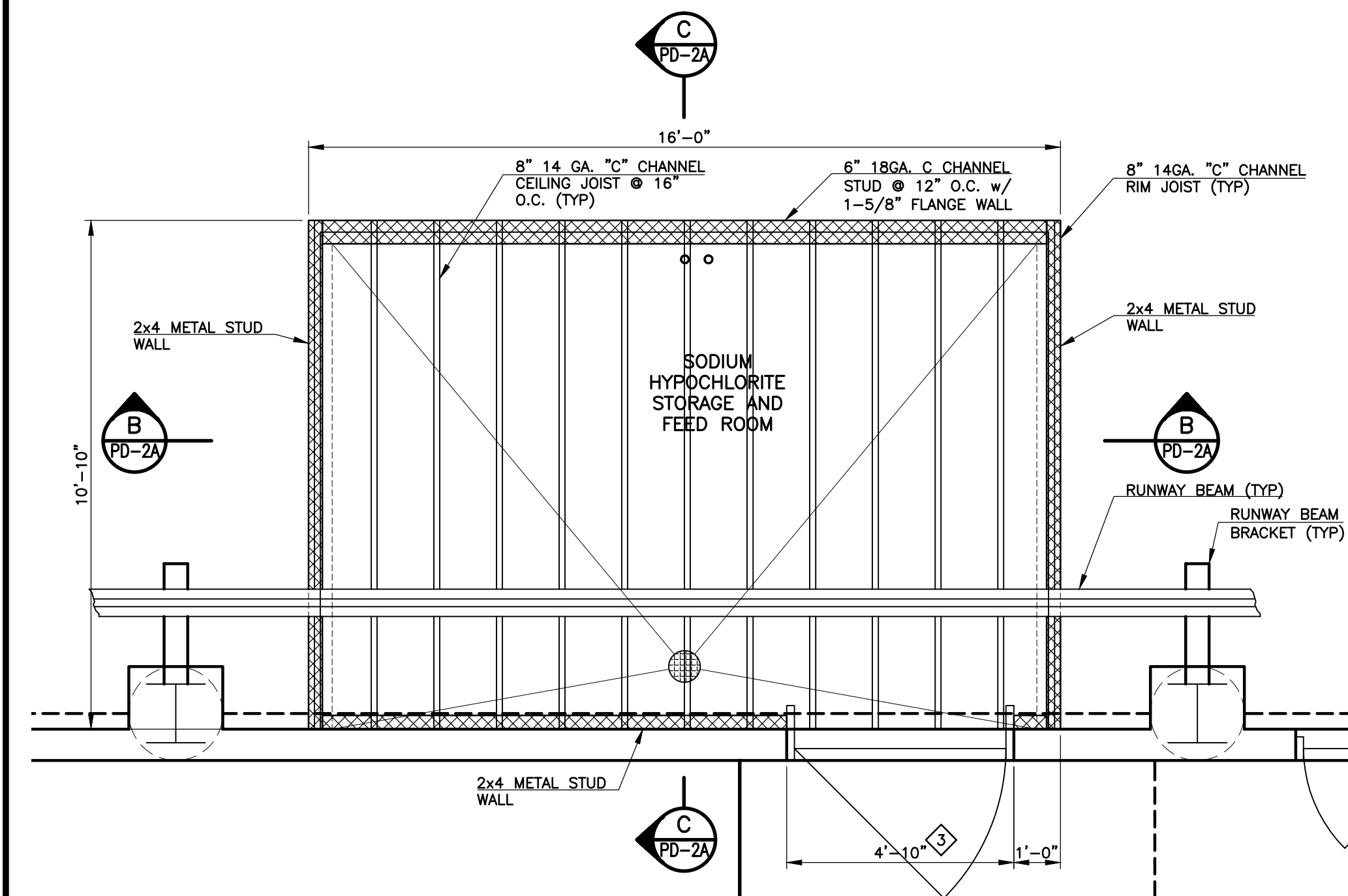


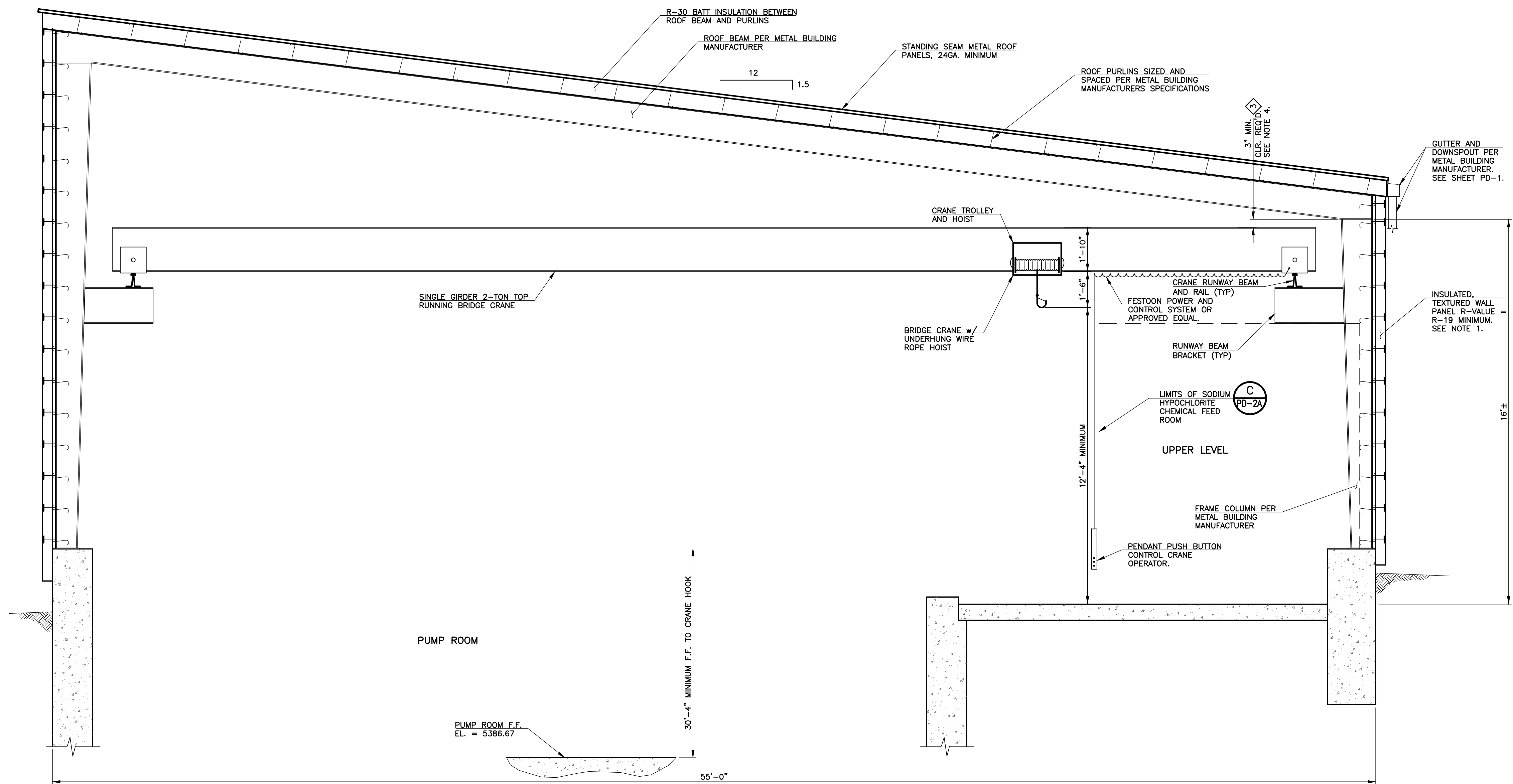
B ROOM SECTION
 PD-2A SCALE: 3/8" = 1'-0"



C ROOM SECTION
 PD-2A SCALE: 3/8" = 1'-0"



1 SODIUM HYPOCHLORITE STORAGE AND FEED ROOM STRUCTURE
 PD-2A SCALE: 3/8" = 1'-0"



A BRIDGE CRANE SECTION
 PD-2A SCALE: 3/8" = 1'-0"

NOTES:

- IN LIEU OF INSULATED METAL PANEL, CONTRACTOR SHALL PROVIDE COMPARISON COSTING FOR A SINGLE SKIN, TEXTURED 20 GA. EXTERIOR METAL PANEL, MINIMUM R19 BATT INSULATION AND INTERIOR LINER PANEL EXTENDING TO EAVE.
- METAL BUILDING MANUFACTURER TO PROVIDE ALL METAL BUILDING SUPERSTRUCTURE SIZED TO HANDLE LOADINGS PROPOSED FOR BUILDING INCLUDING ALL BRIDGE CRANE COMPONENTS.
- SINGLE GIRDER 2-TON TOP RUNNING BRIDGE CRANE
 - RUNWAY BEAM BRACKETS
 - RUNWAY BEAM AND RAIL
 - BRIDGE WITH ELECTRIC CONTROLS TO MOVE LONGITUDINALLY THROUGH BUILDING
 - CRANE TROLLEY WITH ELECTRICAL CONTROL FOR MOVEMENT ACROSS BRIDGE
 - TROLLEY EQUIPPED WITH ELECTRIC HOIST, WIRE ROPE, HOOK
 - ALL ASSOCIATED APPURTENANCES WITH ELECTRICAL CONTROLS FOR A COMPLETE OPERATIONAL SYSTEM
- THE METAL BUILDING HEIGHT MAY VARY FROM THE 16-FOOT HEIGHT SHOWN TO ACCOMMODATE THE MINIMUM HOIST LIFT HEIGHT CLEARANCE REQUIREMENT OF 12'-4" AFF., CLEARANCE REQUIREMENTS FOR THE BRIDGE CRANE AND MINIMUM CLEARANCE REQUIREMENTS FOR THE OVERHEAD DOOR TO PASS ABOVE THE BRIDGE CRANE.

REVISIONS		
NO.	DATE	DESCRIPTION
1	01/06/2012	ISSUED FOR VALUE ENGINEERING
2	01/25/2012	ISSUED FOR PD BUILDING VALUE ENGINEERING REVIEW AND COMMENTS
3	04/18/2012	ISSUED FOR BUILDING PERMIT SUBMITTAL TO PPRBD (PUMPING AND DISINFECTION BLDG)
4	05/21/2012	ISSUED FOR CONSTRUCTION PER PPRBD BLDG PERMIT #88993 (PUMP AND DISINFECTION BLDG)

THIS DRAWING IS THE PROPERTY OF GMS, INC., AND IS NOT TO BE REPRODUCED, MODIFIED OR USED FOR ANY OTHER PROJECT OR EXTENSION OF THIS PROJECT EXCEPT BY AGREEMENT WITH THIS COMPANY.

BUILDING SECTIONS AND DETAILS	
HAROLD D. THOMPSON REGIONAL WATER RECLAMATION FACILITY LOWER FOUNTAIN METROPOLITAN SEWAGE DISPOSAL DISTRICT	
DRAWN DESIGNED CHECKED DATE PROJECT NO. GMS FILE NO.	SKC DRF RJS JANUARY 2012 20166.372 2599
GMS, INC. CONSULTING ENGINEERS 611 N. WEBER, SUITE 300 COLORADO SPRINGS, COLORADO 80903	
SHEET PD-2A OF —	

XREF FILENAME: G:\BASE DWG: G:\PLOT STYLE FILE: 1025C.DWG
 FILENAME: G:\L\FM500\20166\372\PD2A.DWG