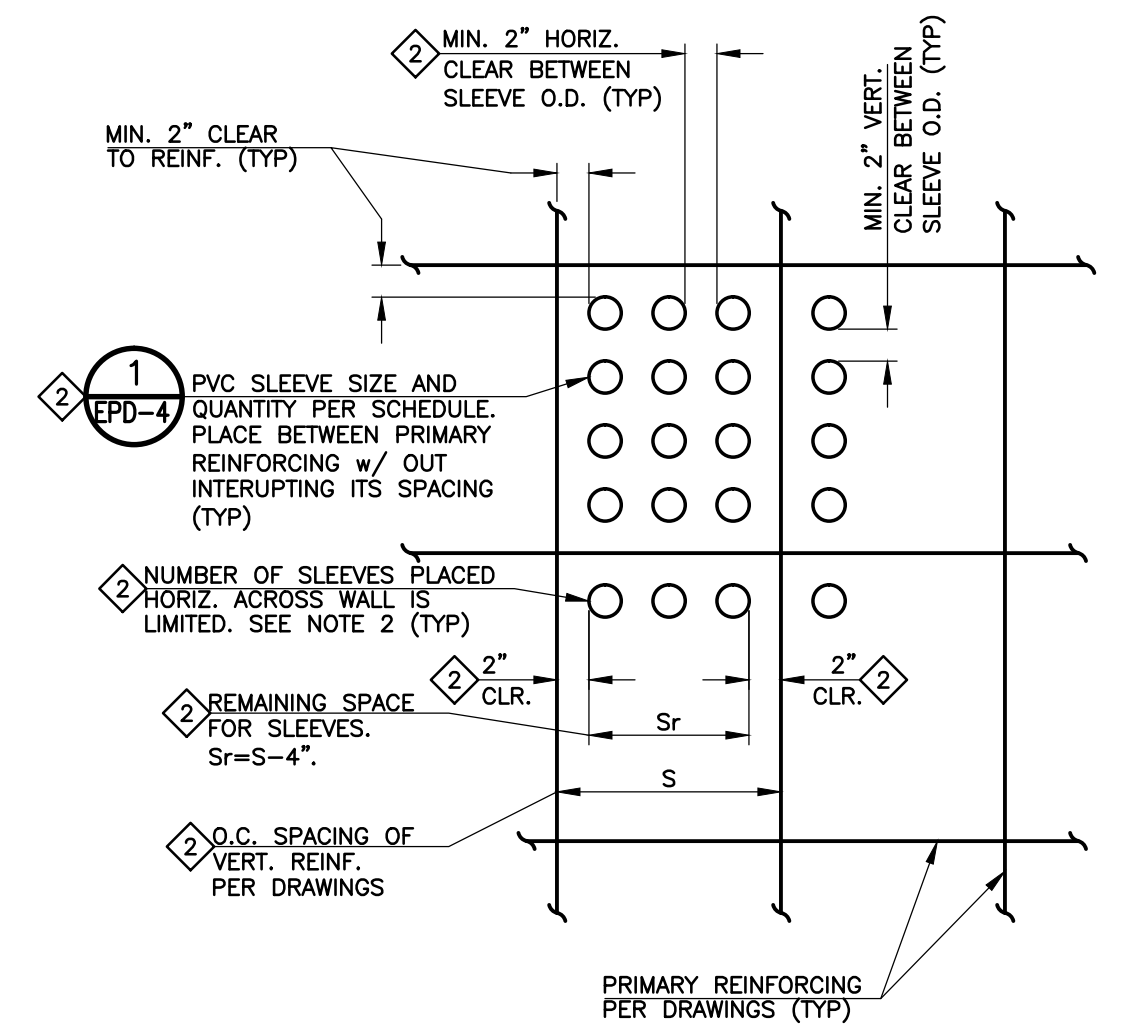


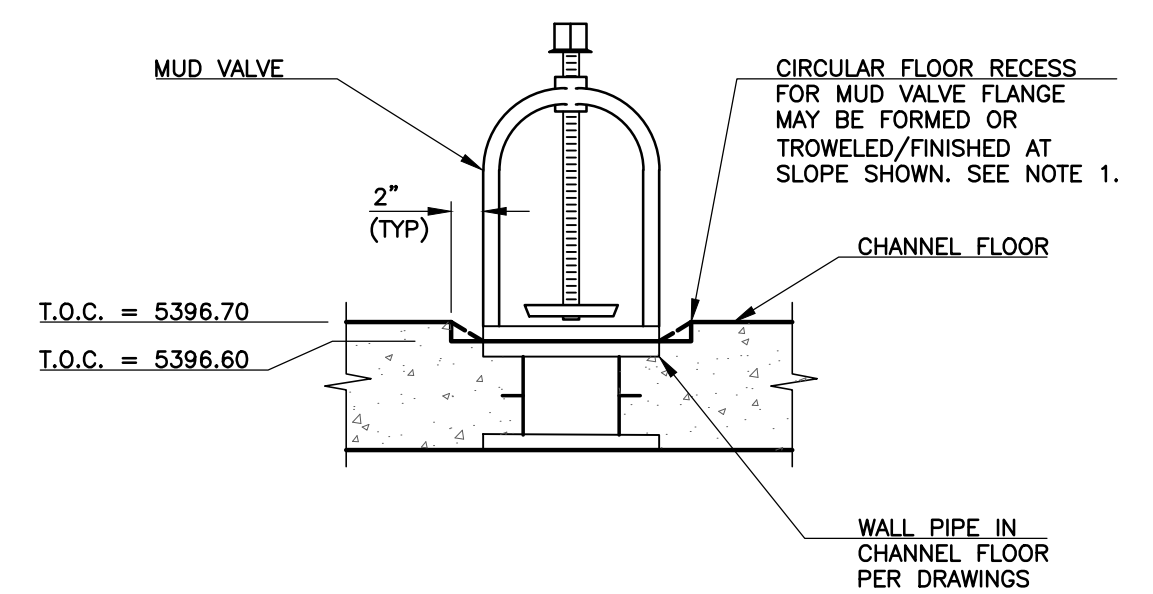
1 PUMPING AND DISINFECTION BUILDING PENETRATION PLAN
 SCALE: 1" = 4'

- NOTES:
- VERIFY SIZE OF BLOCKOUTS REQUIRED WITH PROPOSED PRODUCT AND METHOD OF PENETRATION SEAL PRIOR TO INITIATING FORMWORK.
 - ADDITIONAL REINFORCING IS REQUIRED FOR ALL PENETRATIONS 4" IN DIAMETER AND LARGER. SEE DETAILS 1/PD-9 AND 2/PD-9.
 - COORDINATE AS NECESSARY FOR CONDUIT AND/OR DUCT RUN PENETRATIONS REQUIRED BY ELECTRICAL AND CONTROLS WORK. VERIFY NUMBER AND SIZE OF PENETRATIONS REQUIRED FOR ELECTRICAL AND CONTROLS WORK PRIOR TO INITIATING FORMWORK. SEE DETAIL 2 THIS SHEET.
 - REFER TO DRAIN AND VENT PLAN FOR LOCATIONS AND FINISH ELEVATIONS OF FLOOR DRAINS, TRENCH DRAIN, CLEAN-OUT ASSEMBLY AND THEIR APPURTENANCES.
 - REFER TO STRUCTURAL FOUNDATION PLAN FOR SECTION CUT REFERENCES AND LOCATIONS.



- NOTES:
- ALL CONDUIT/CONDUCTOR PENETRATIONS THROUGH FLOORS AND WALLS SHALL BE SLEEVED ACCORDING TO SHEET EPD-4. ADDITIONAL REINFORCING AT SLEEVES IS NOT REQUIRED PROVIDED SLEEVES ARE PLACED WITH MINIMUM CLEAR DISTANCES SHOWN AND THE SLEEVES ARE PLACED BETWEEN THE PRIMARY REINFORCING WITHOUT INTERRUPTING ITS SPACING. IF MULTIPLE SLEEVES CANNOT FIT WITHIN ONE GRID OF THE PRIMARY REINFORCING IN ACCORDANCE WITH THE CLEAR DISTANCES SHOWN, THE REMAINING SLEEVES SHALL BE PLACED INTO THE ADJACENT GRID OF THE PRIMARY REINFORCING AT THE CLEAR DISTANCES SHOWN.
 - THE NUMBER OF SLEEVES THAT MAY BE PLACED HORIZONTALLY ACROSS WALLS SHALL BE LIMITED BY THE SIZE OF THE SLEEVES AND THE SPACE THEY OCCUPY BETWEEN THE VERTICAL PRIMARY REINFORCING. THE TOTAL SPACE THE SLEEVES OCCUPY (I.E. THE SUM OF THEIR OUTSIDE DIAMETERS) CAN NOT EXCEED ONE-HALF S_r , THE REMAINING SPACE BETWEEN REINFORCING.

2 TYPICAL SLEEVE DETAIL
 NO SCALE



- NOTE:
- FLOOR RECESS SHALL NOT IMPEDE OR ADVERSELY AFFECT THE INSTALLATION OR SEAL OF THE MUD VALVE FLANGE, OR THE REMOVAL AND REPLACEMENT OF THE MUD VALVE.

3 MUD VALVE RECESS DETAIL
 NO SCALE

| REVISIONS | | |
|-----------|------------|--|
| NO. | DATE | DESCRIPTION |
| 1 | 09/16/2011 | ISSUED FOR CMO PREPARATION (PUMPING AND DISINFECTION BUILDING FOUNDATION) |
| 2 | 09/22/2011 | ISSUED FOR FOUNDATION PERMIT SUBMITTAL TO PRRBD (PUMPING AND DISINFECTION BLDG) |
| 3 | 10/17/2011 | ISSUED FOR CONSTRUCTION PER PRRBD FOUNDATION PERMIT #8893 (PUMP AND DISINFECTION BLDG) |
| 4 | 11/22/2011 | REVISE WETWELL HATCH DIMENSIONS PER SHOP SUBMITTAL NO. 08306-001A |
| 5 | 01/09/2012 | ISSUED FOR VALUE ENGINEERING |
| 6 | 01/25/2012 | ISSUED FOR PD BUILDING VALUE ENGINEERING REVIEW AND COMMENTS |
| 7 | 04/18/2012 | ISSUED FOR BUILDING PERMIT SUBMITTAL TO PRRBD (PUMPING AND DISINFECTION BLDG) |
| 8 | 05/21/2012 | ISSUED FOR CONSTRUCTION PER PRRBD BLDG PERMIT #8893 (PUMP AND DISINFECTION BLDG) |

THIS DRAWING IS THE PROPERTY OF GMS, INC., AND IS NOT TO BE REPRODUCED, MODIFIED OR USED FOR ANY OTHER PROJECT OR EXTENSION OF THIS PROJECT EXCEPT BY AGREEMENT WITH THIS COMPANY.

© 2011 GMS, INC.

PENETRATION PLAN
 HAROLD D. THOMPSON REGIONAL WATER RECLAMATION FACILITY
 LOWER FOUNTAIN METROPOLITAN SEWAGE DISPOSAL DISTRICT

DRAWN: SKC
 DESIGNED: MAM
 CHECKED: RJS
 DATE: 2011
 PROJECT NO.: 20166.372
 GMS FILE NO.: 2599

GMS, INC.
 CONSULTING ENGINEERS
 611 N. WEBER, SUITE 300
 COLORADO SPRINGS, COLORADO 80903

SHEET
PD-4A
 OF
 -

XREF FILENAME: G:\
 PLOT STYLE FILE: 1000.ctb
 FILENAME: G:\FM\SD0\20166\372\PD4\PD4.DWG