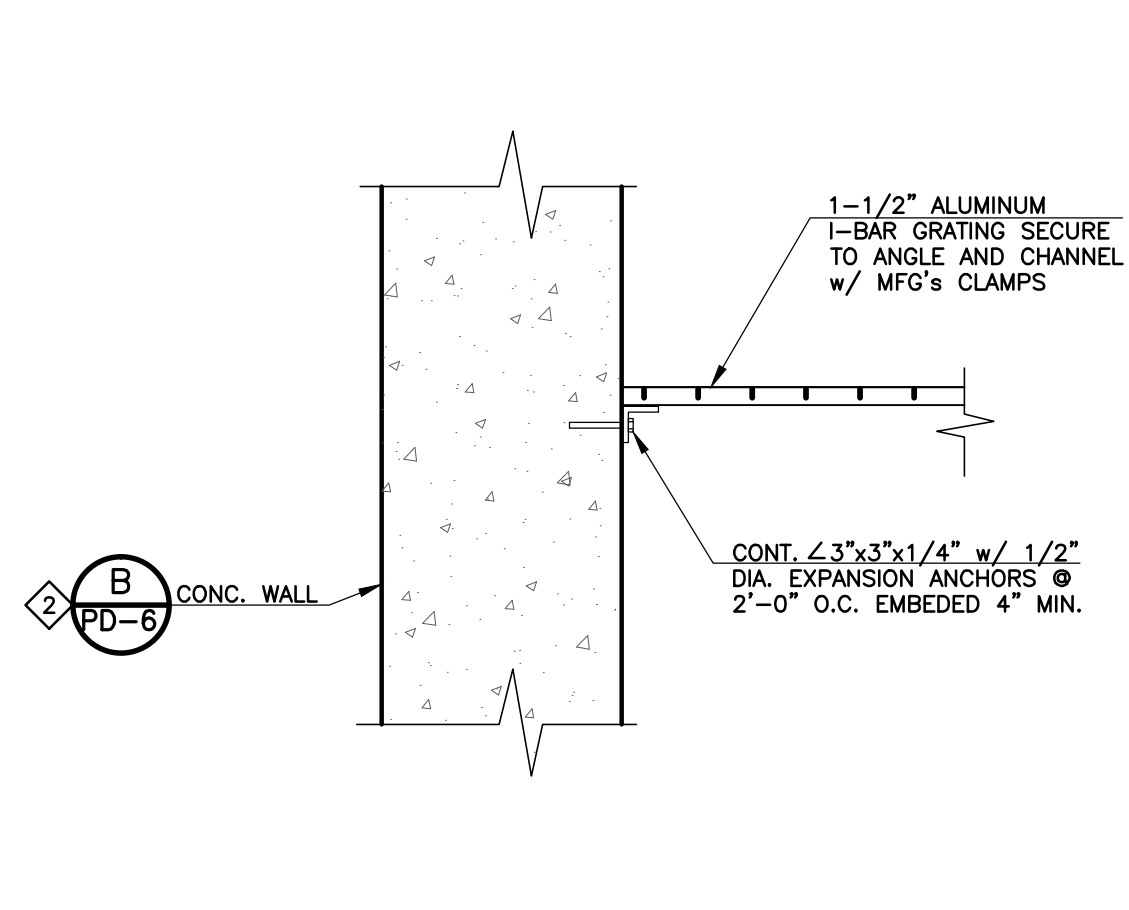
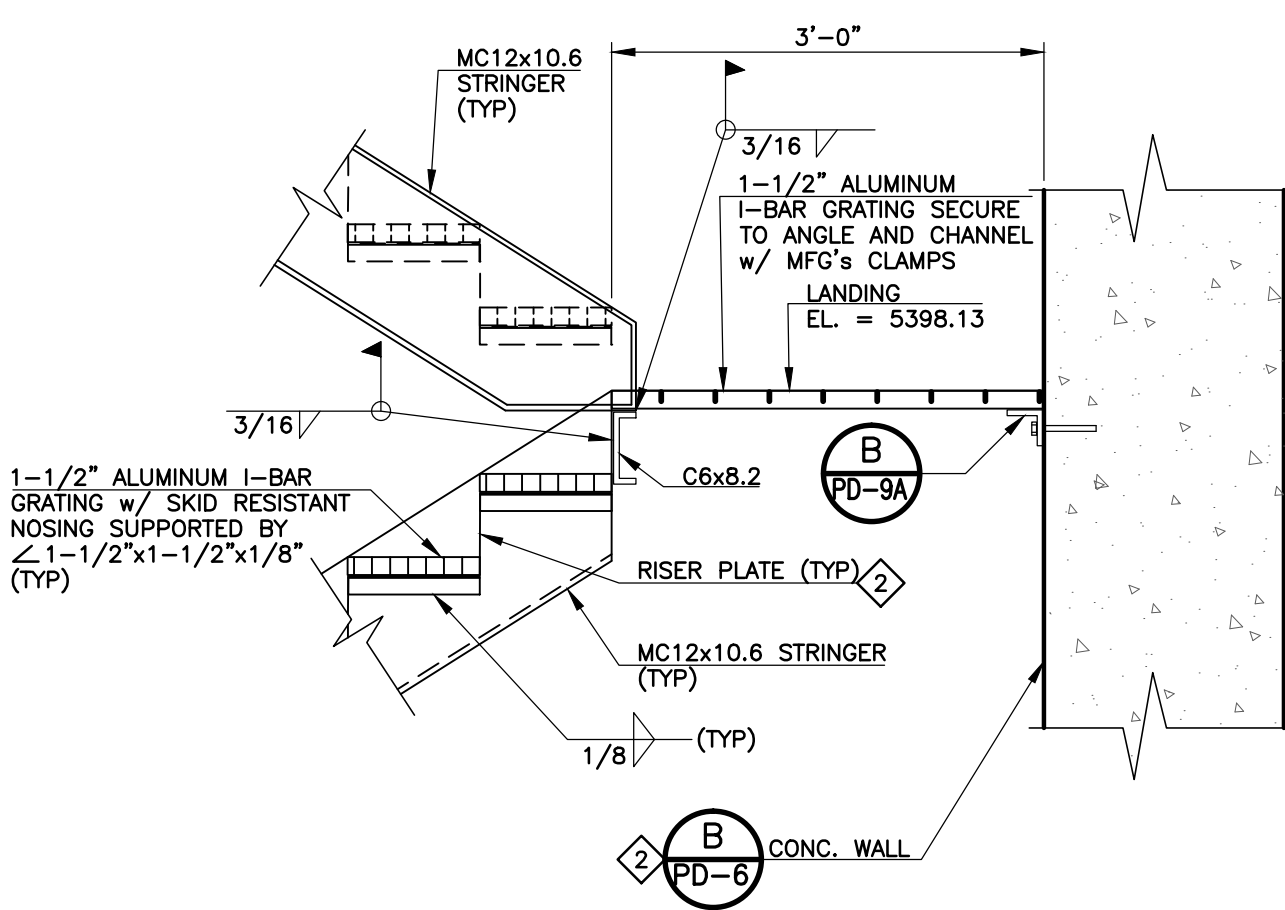


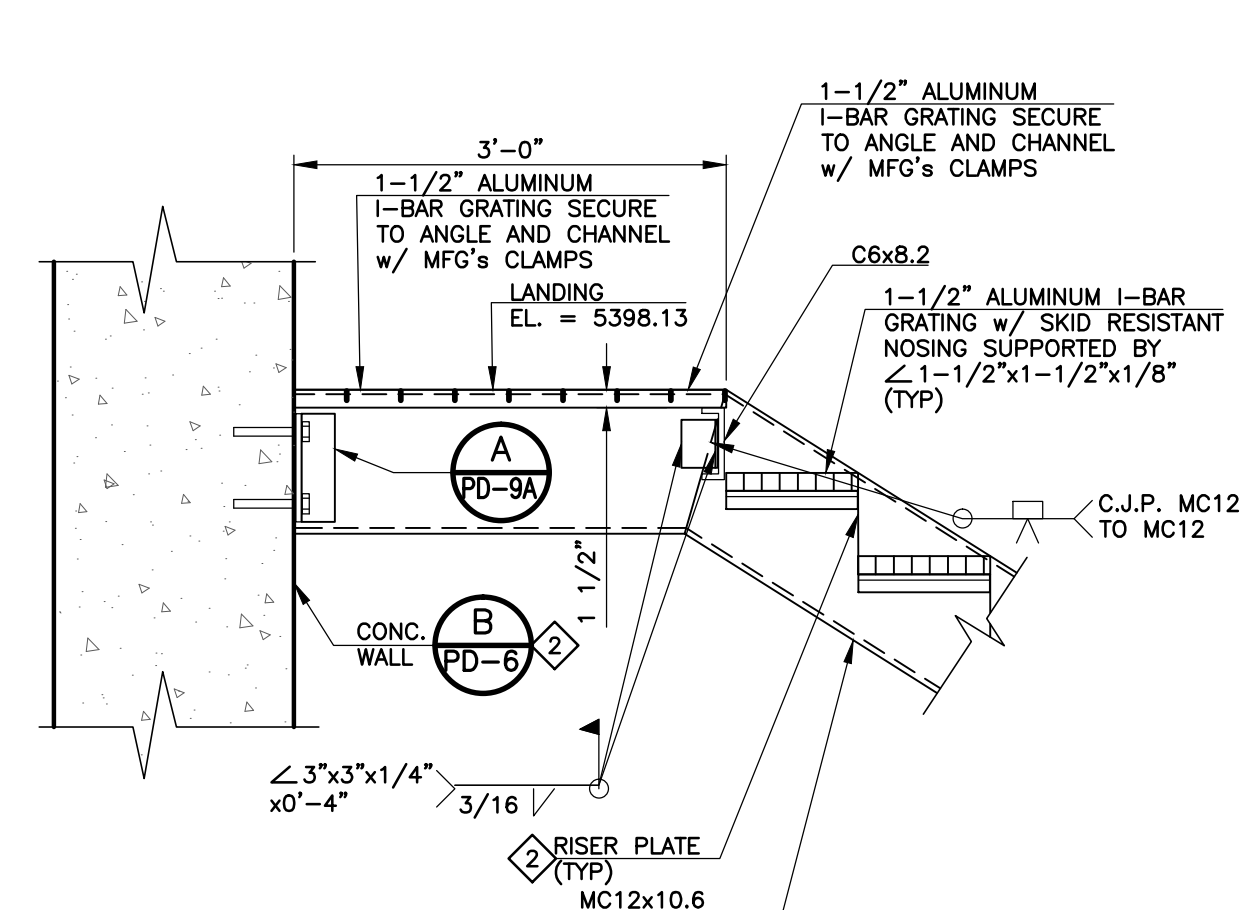
**A** LANDING SUPPORT DETAIL  
PD-9A SCALE: 3/4" = 1'-0"



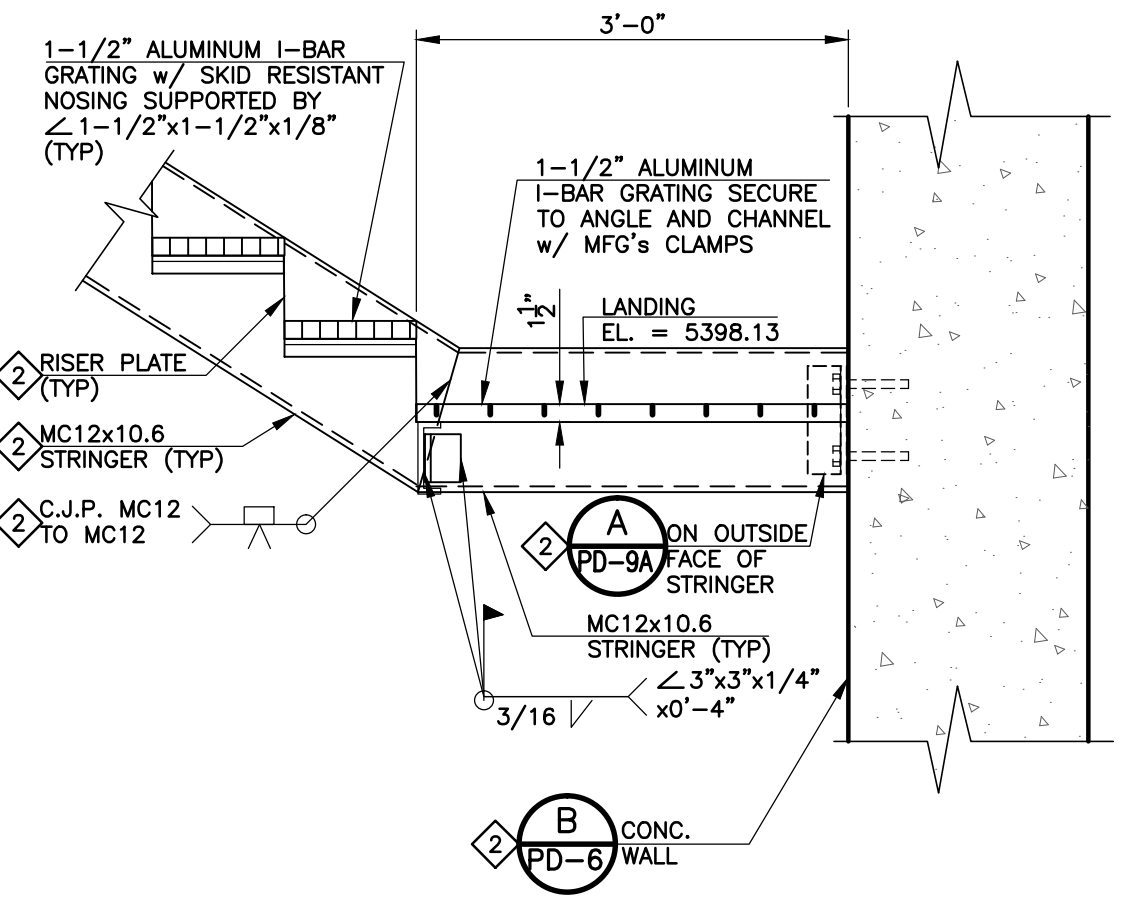
**B** LANDING SUPPORT DETAIL  
PD-9A SCALE: 3/4" = 1'-0"



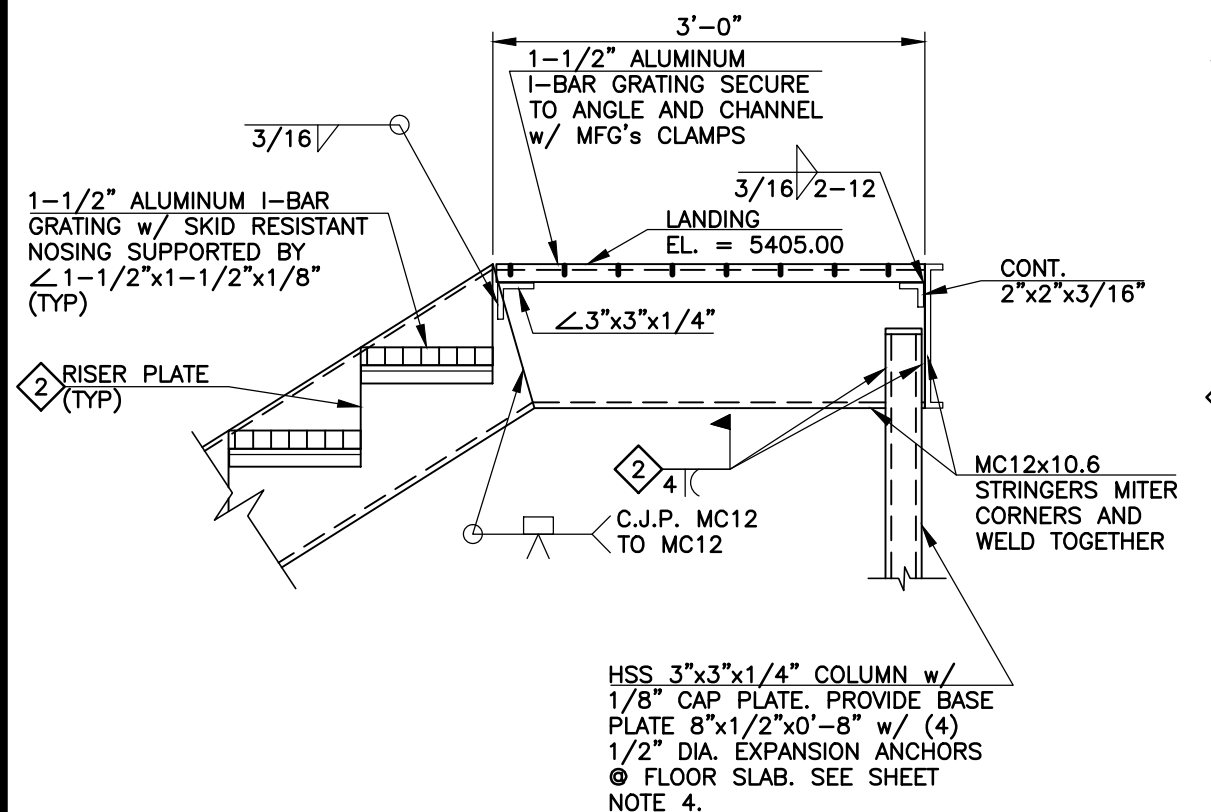
**C** STAIRWAY TO WALKWAY DETAIL  
PD-9A SCALE: 3/4" = 1'-0"



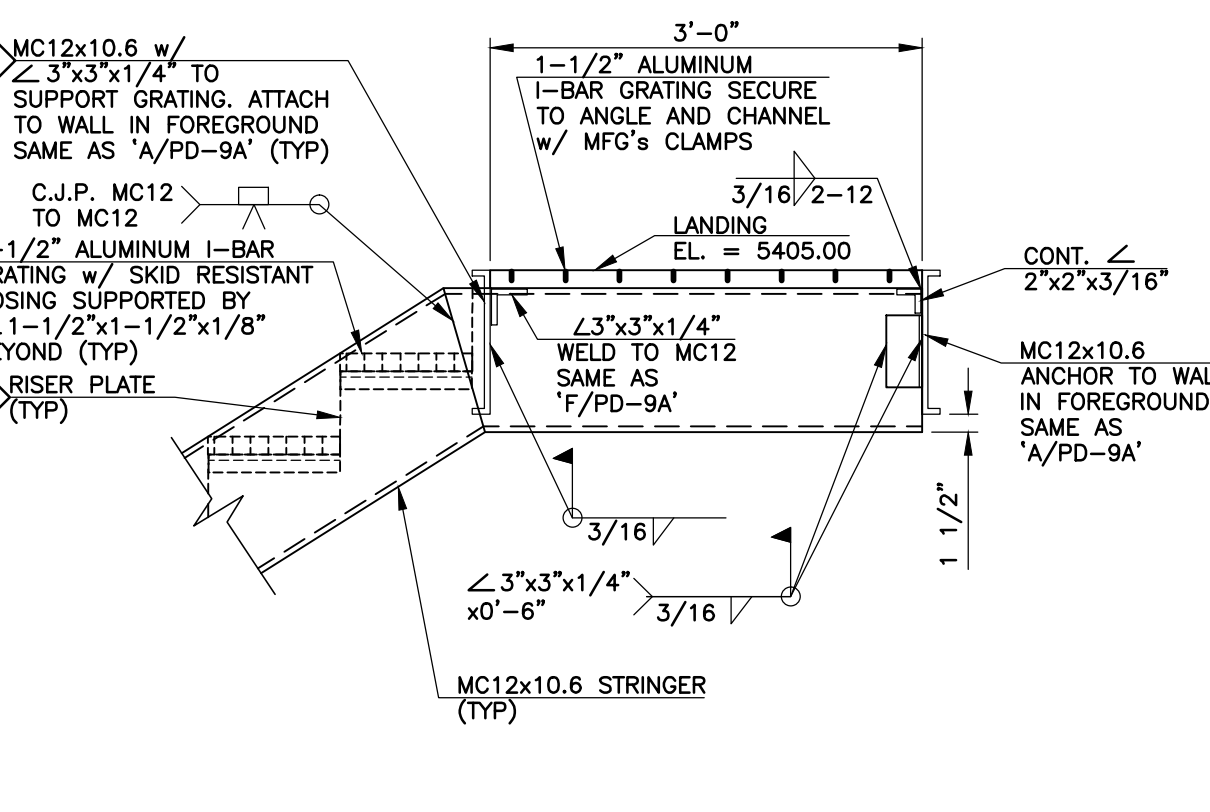
**D** STAIRWAY TO WALKWAY DETAIL  
PD-9A SCALE: 3/4" = 1'-0"



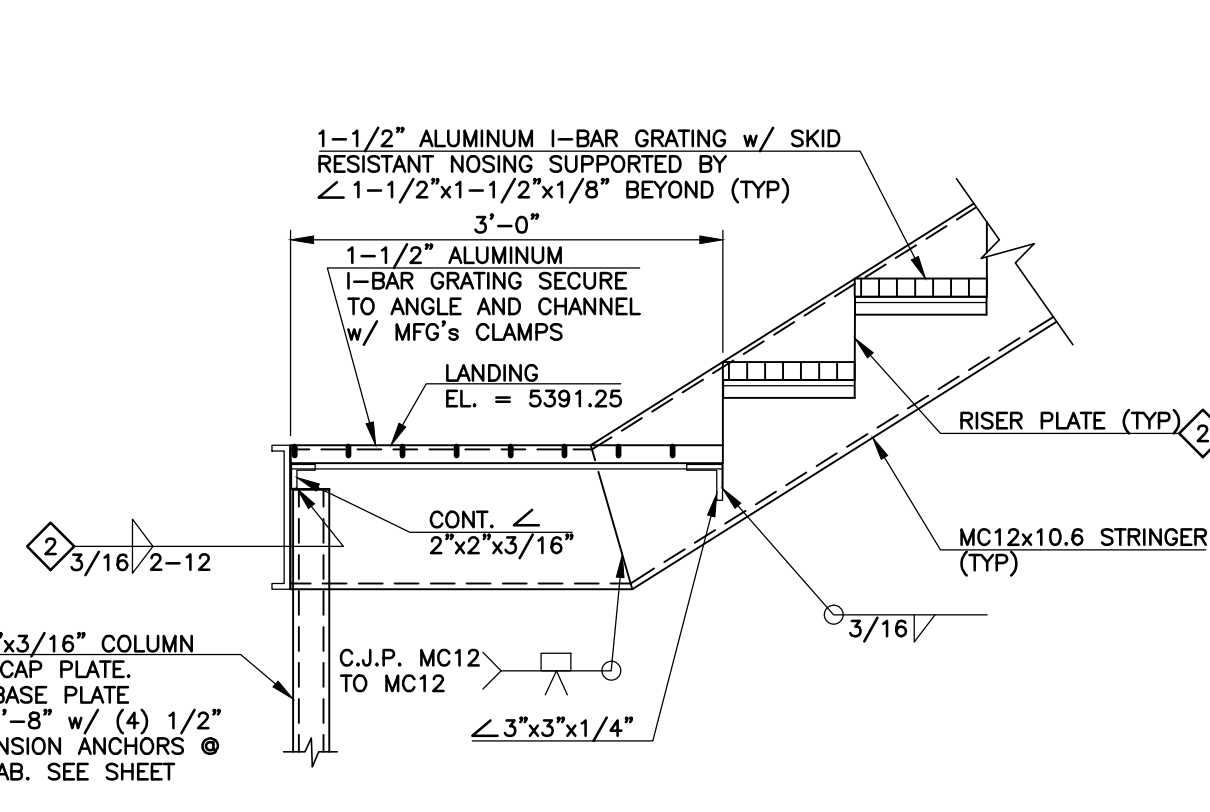
**E** LANDING TO STAIRWAY DETAIL  
PD-9A SCALE: 3/4" = 1'-0"



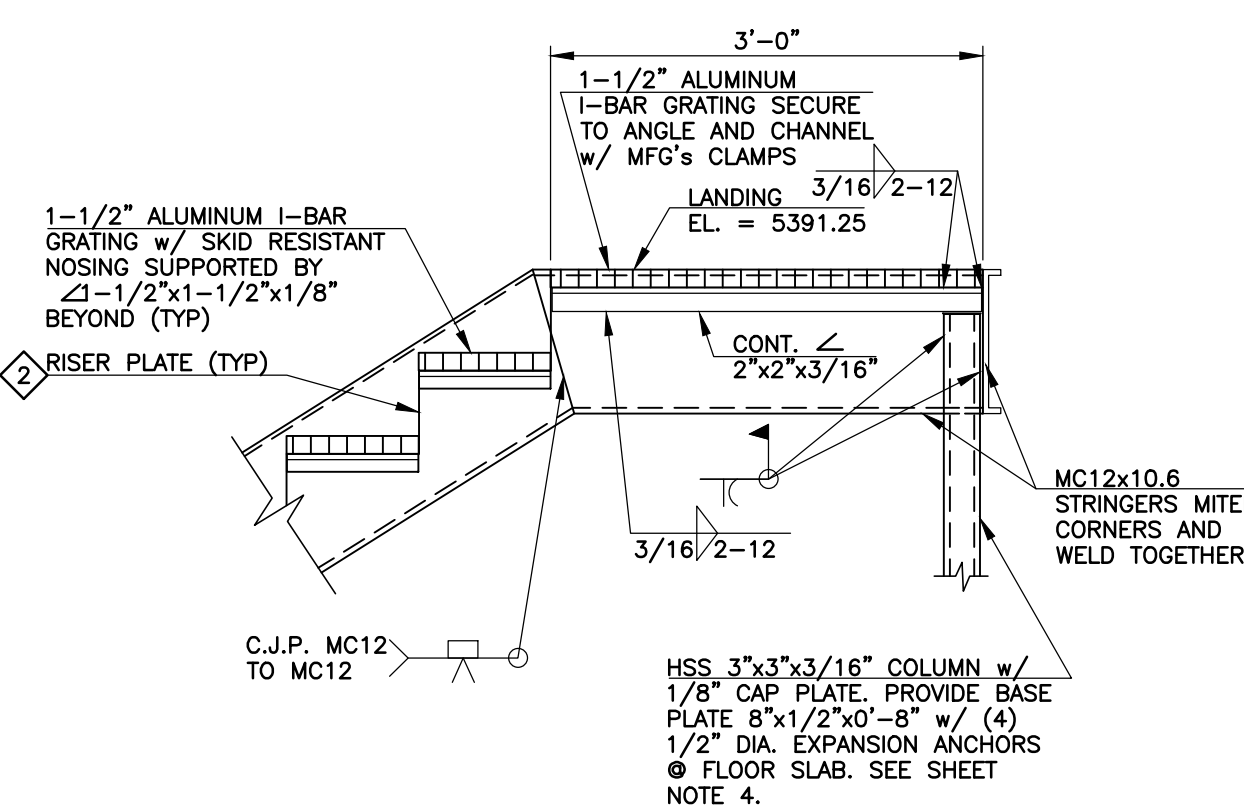
**F** LANDING TO STAIRWAY DETAIL  
PD-9A SCALE: 3/4" = 1'-0"



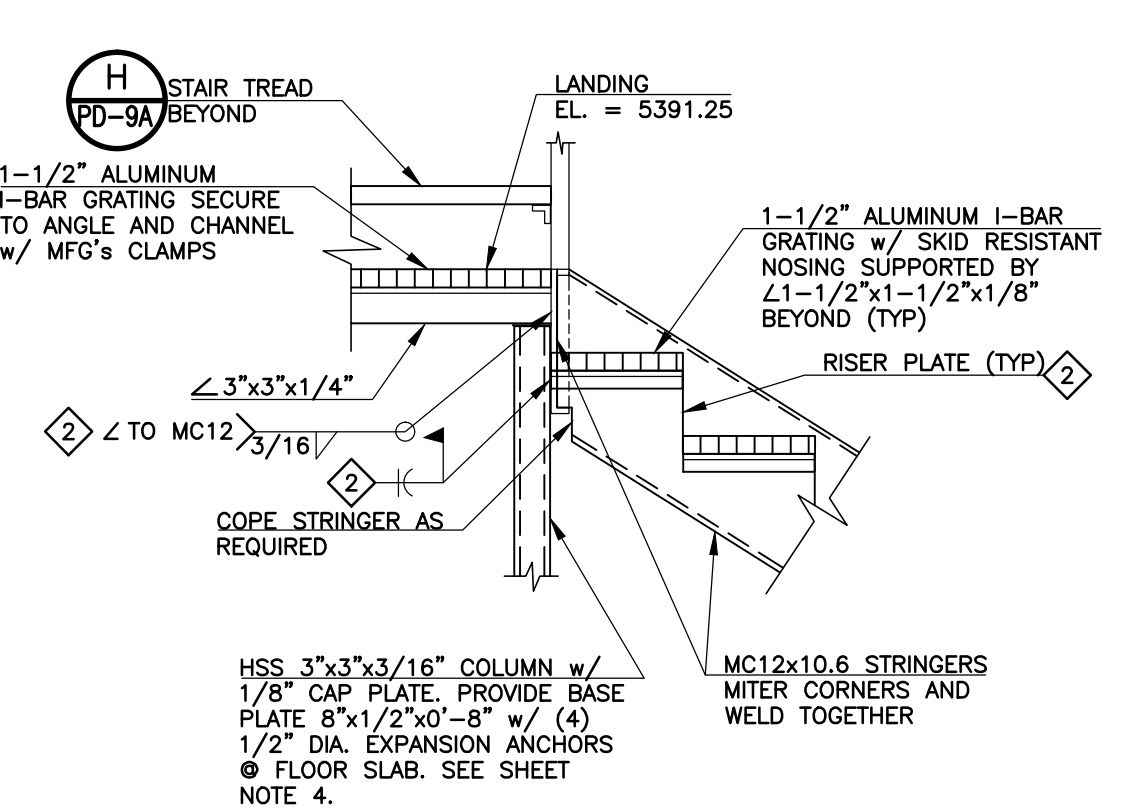
**G** LANDING TO STAIRWAY DETAIL  
PD-9A SCALE: 3/4" = 1'-0"



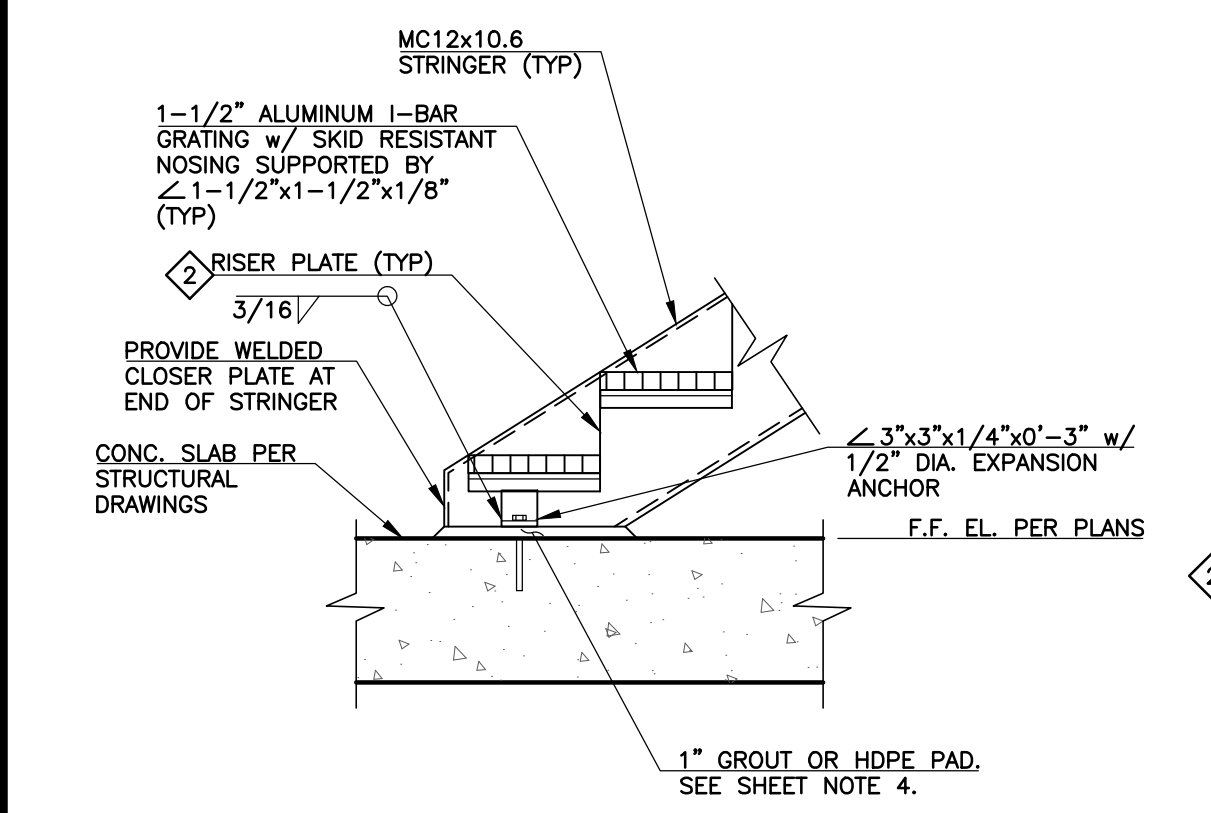
**H** STAIRWAY TO LANDING DETAIL  
PD-9A SCALE: 3/4" = 1'-0"



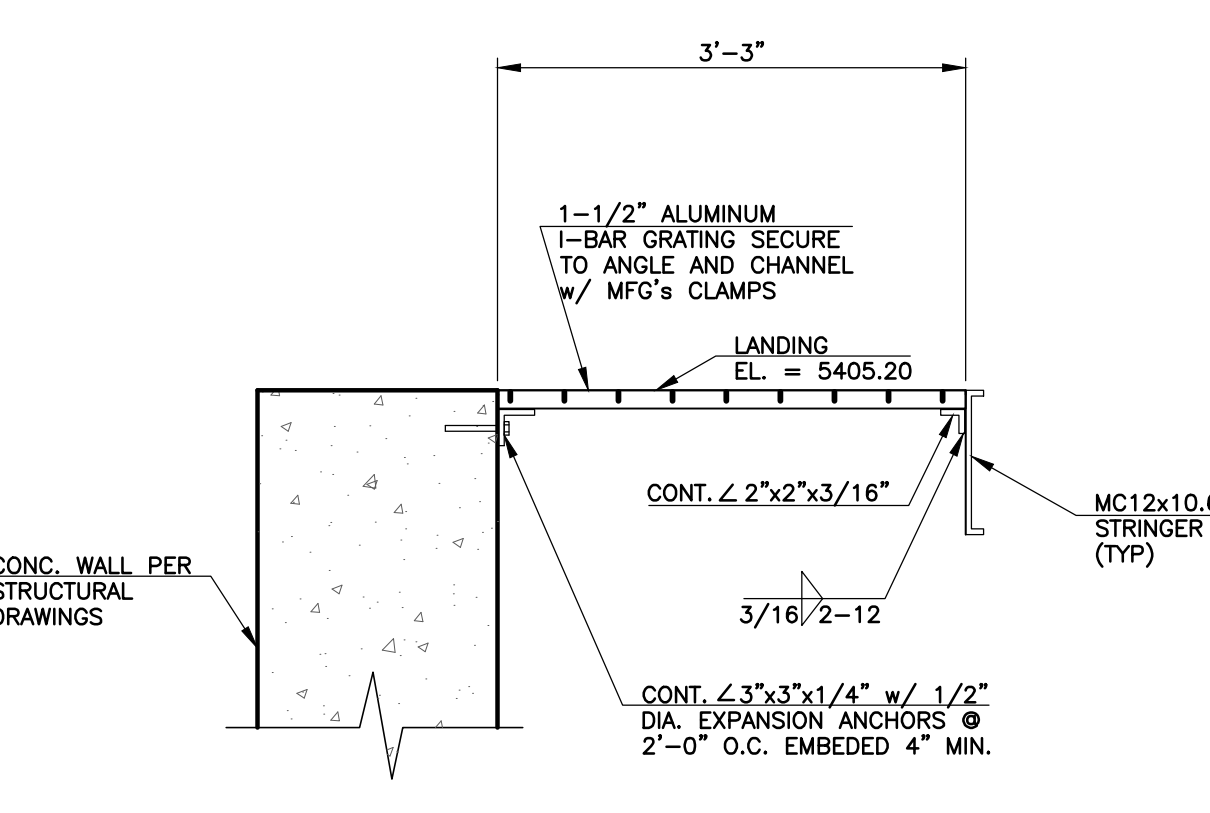
**I** LANDING TO STAIRWAY DETAIL  
PD-9A SCALE: 3/4" = 1'-0"



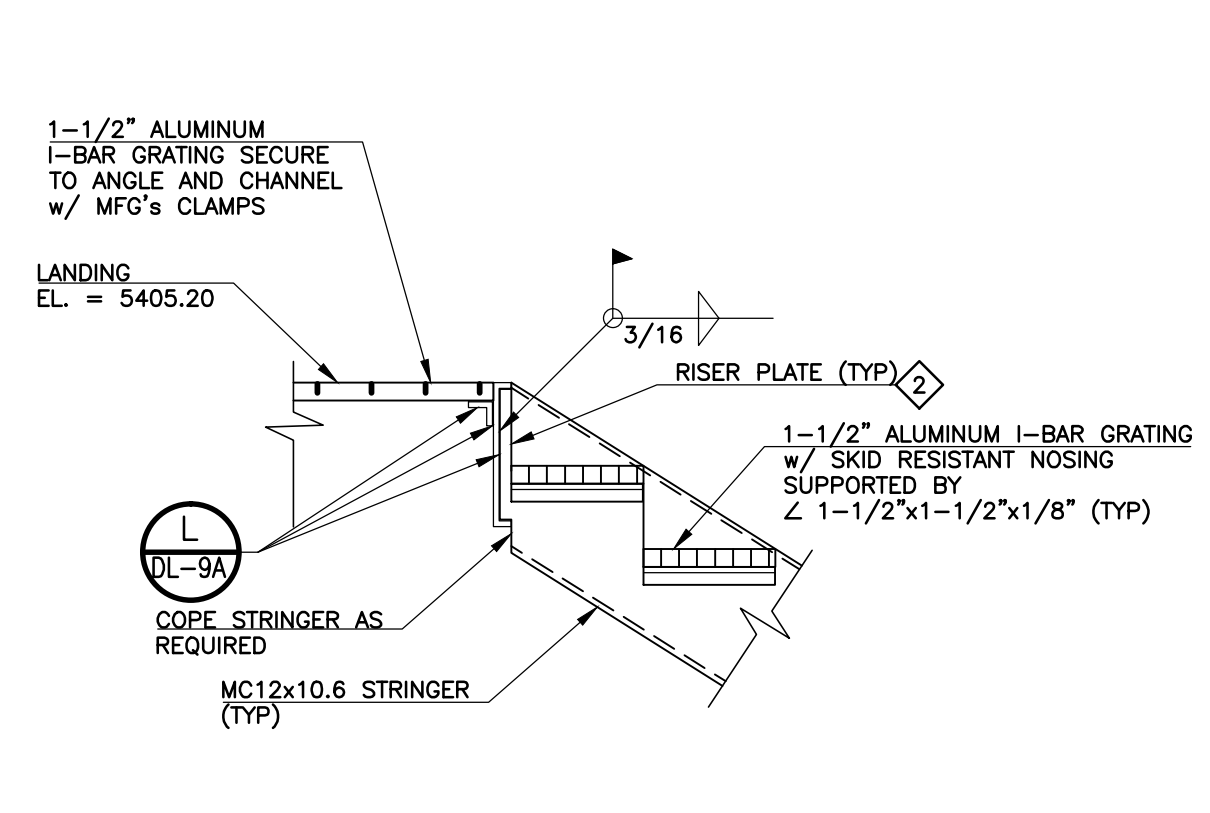
**J** LANDING TO STAIRWAY DETAIL  
PD-9A SCALE: 3/4" = 1'-0"



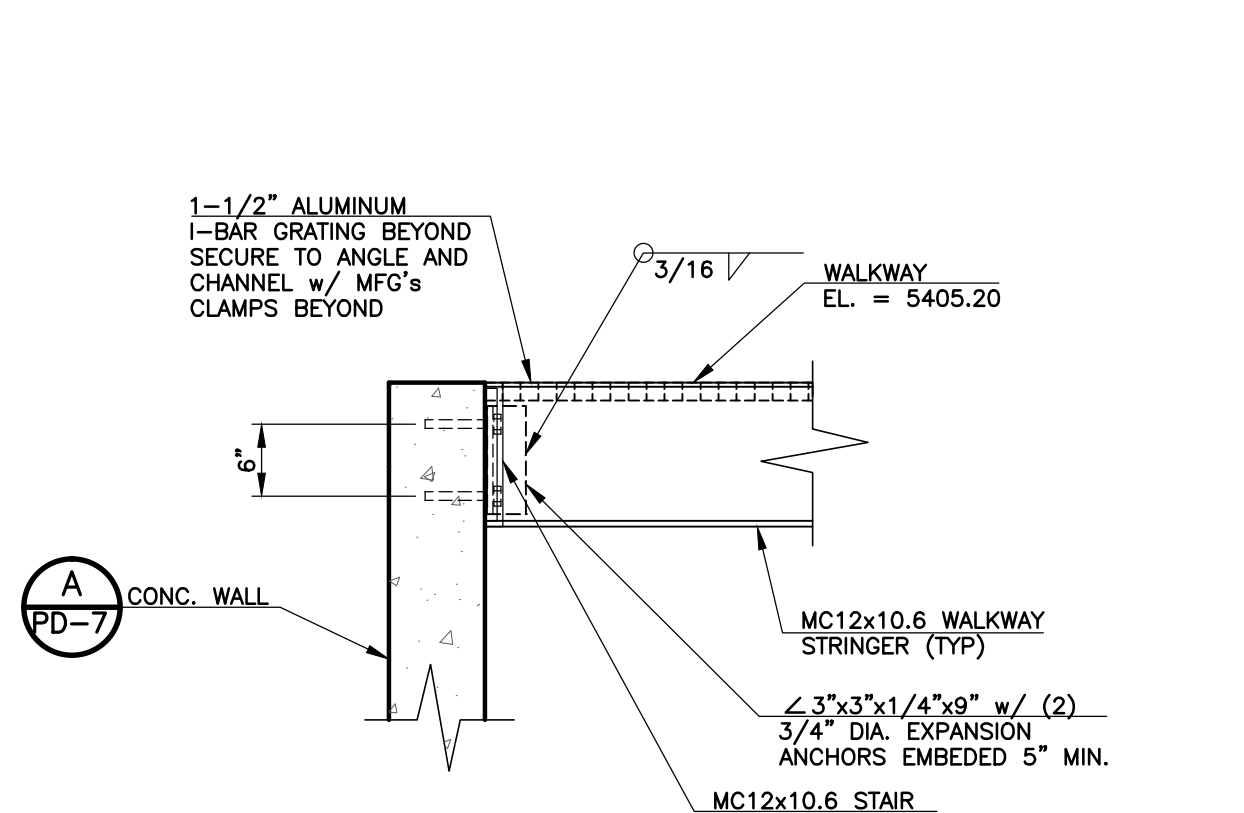
**K** STAIRWAY TO FLOOR DETAIL  
PD-9A SCALE: 3/4" = 1'-0"



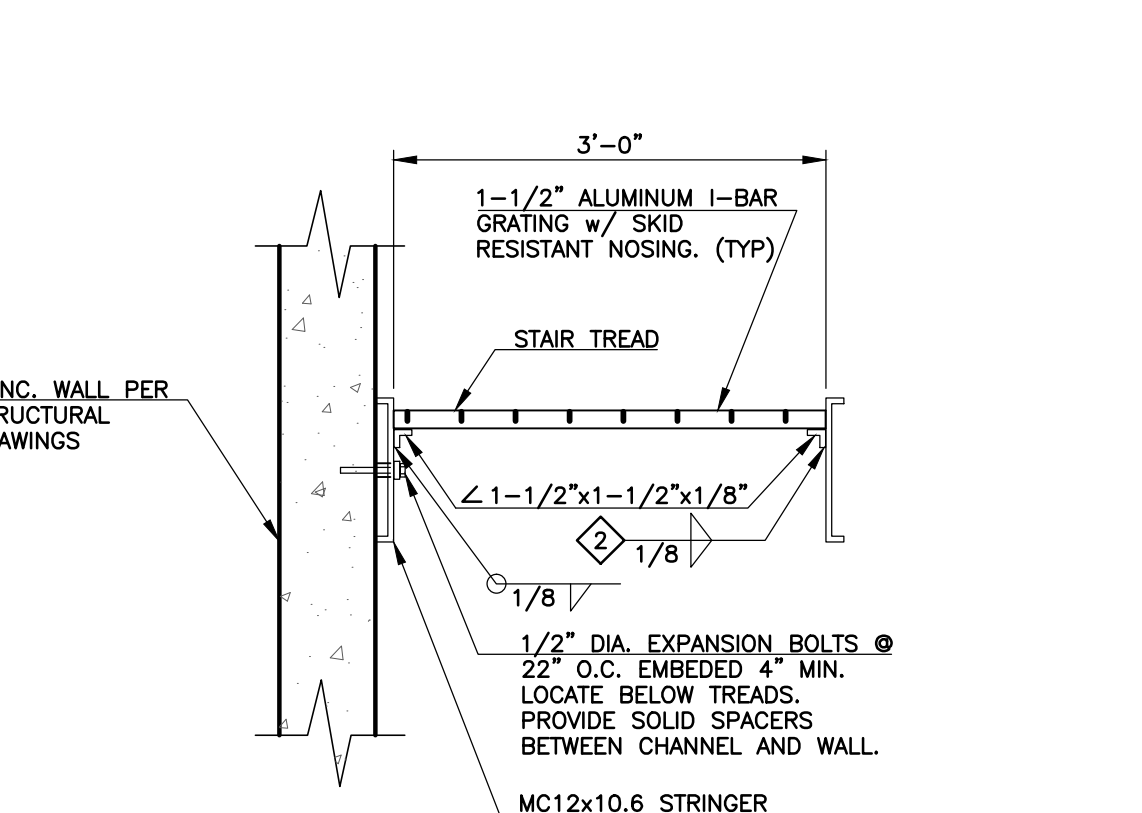
**L** WALKWAY DETAIL  
PD-9A SCALE: 3/4" = 1'-0"



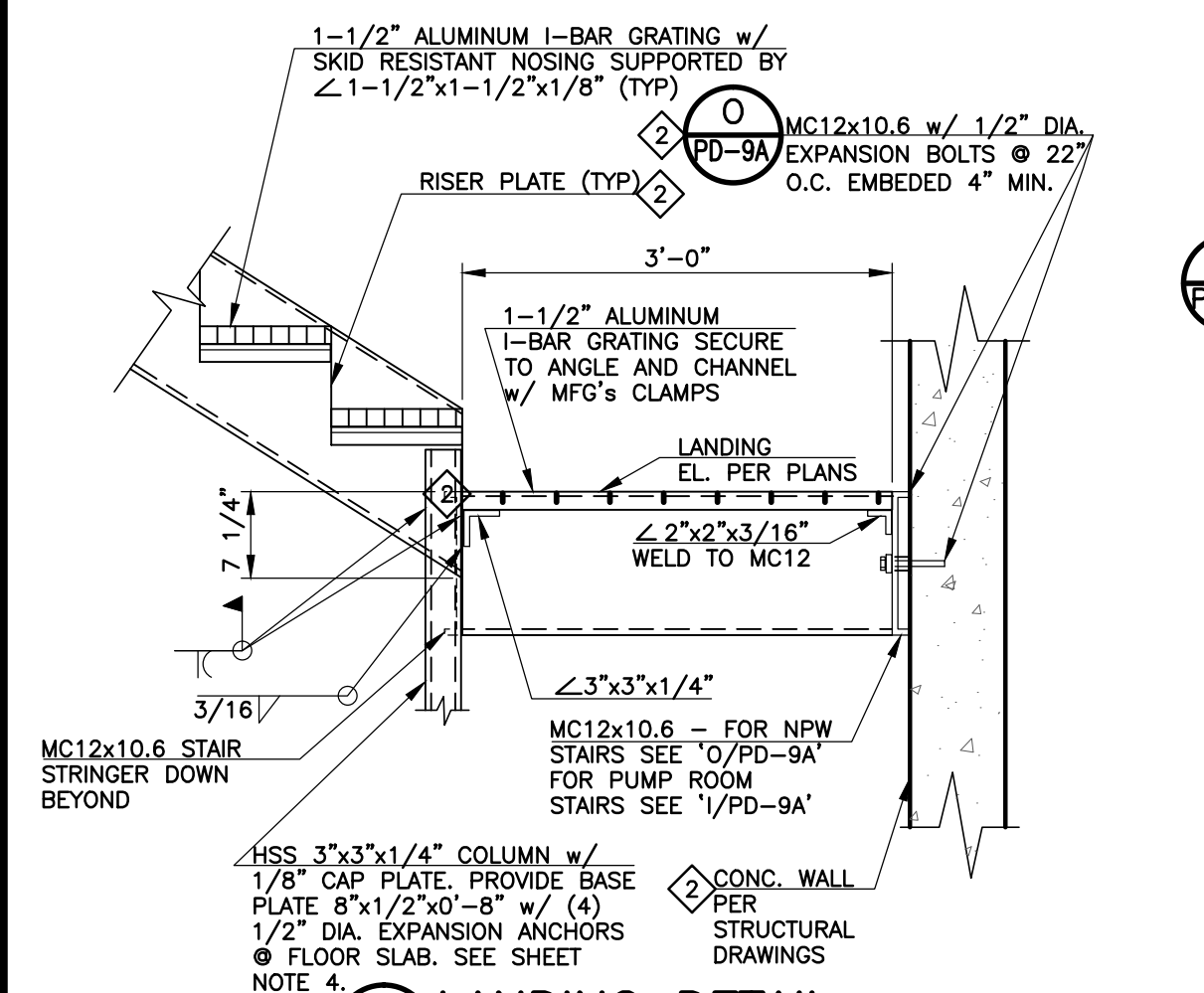
**M** STAIRWAY TO WALKWAY DETAIL  
PD-9A SCALE: 3/4" = 1'-0"



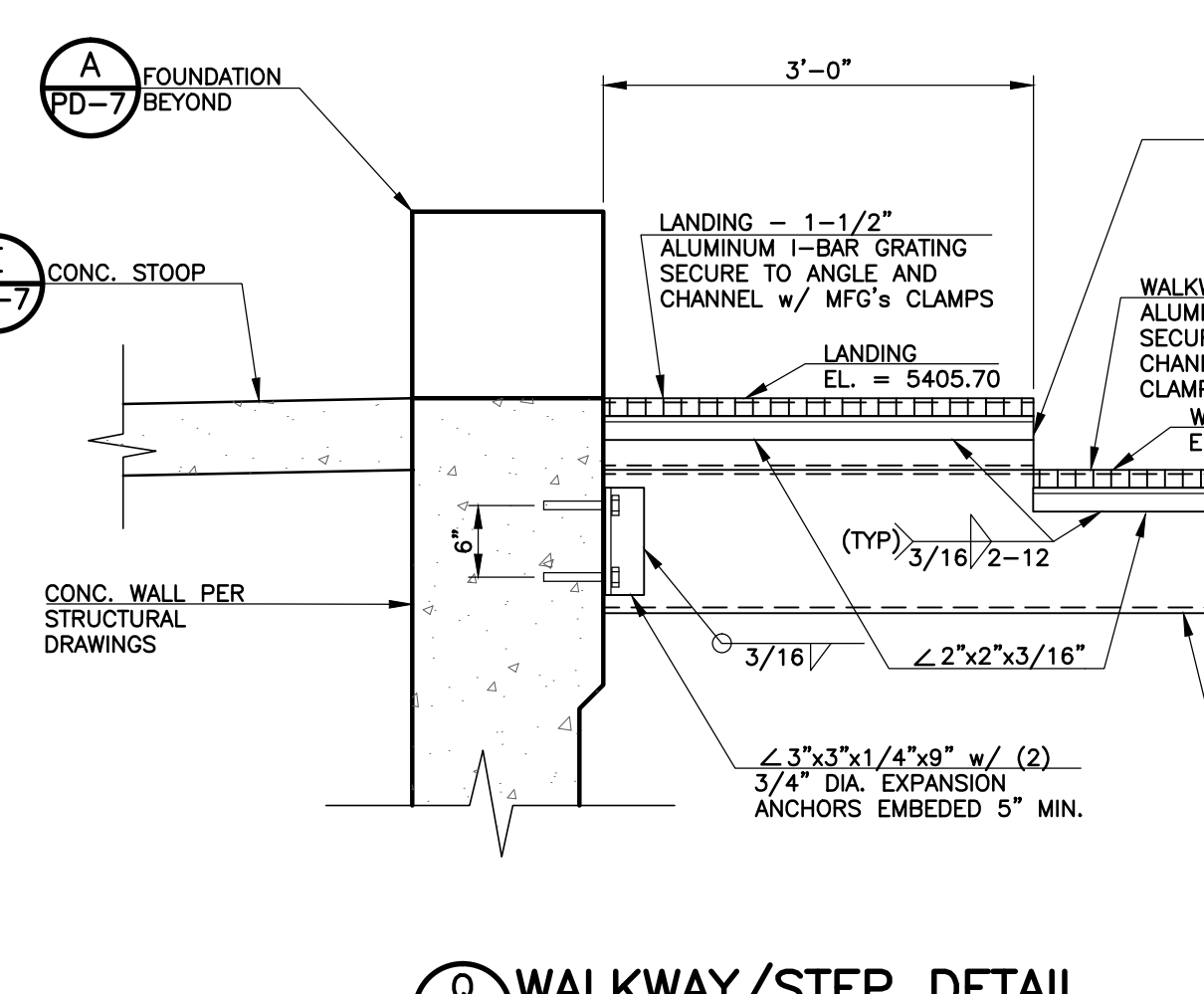
**N** WALKWAY SUPPORT DETAIL  
PD-9A SCALE: 3/4" = 1'-0"



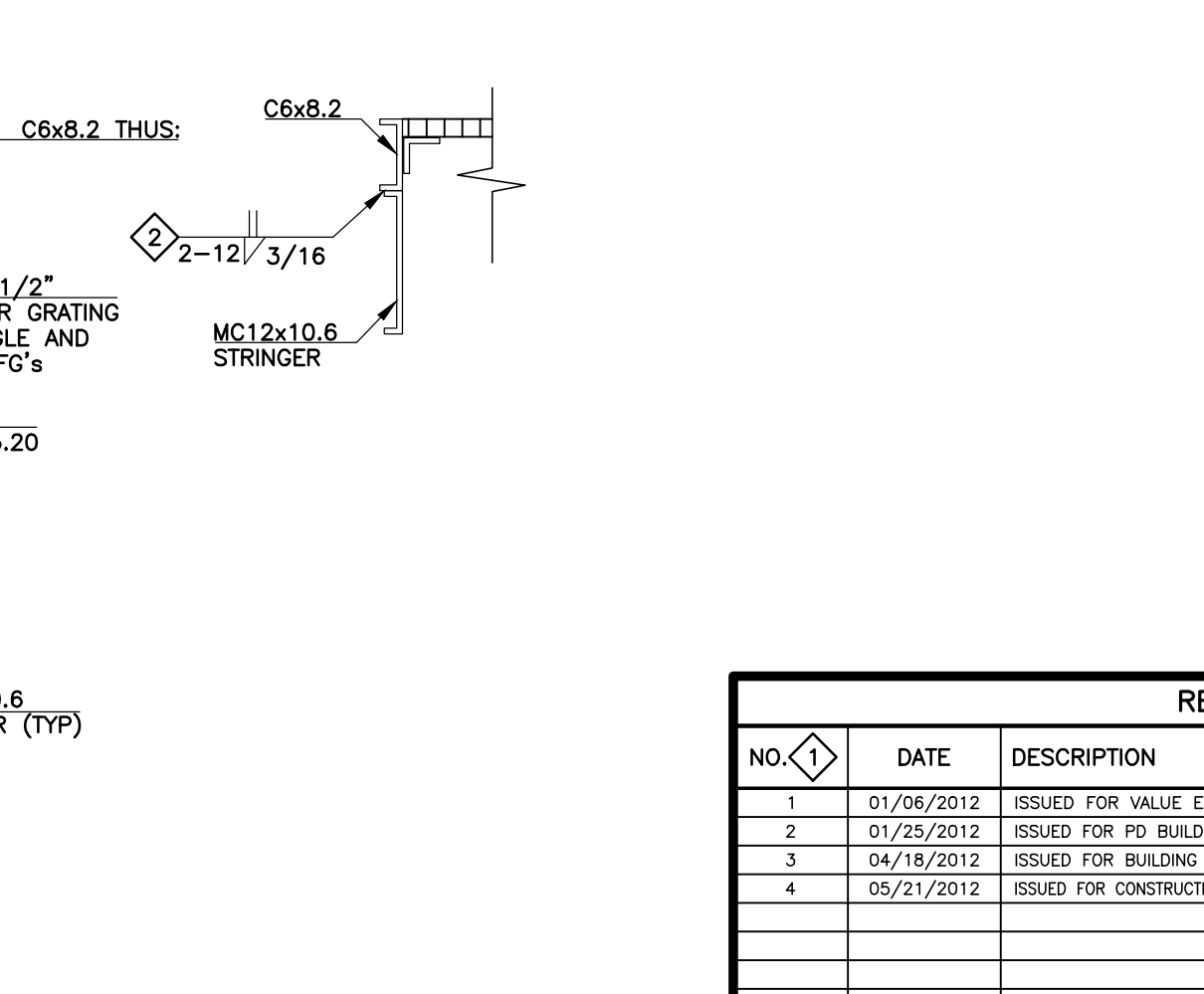
**O** STAIR TREAD/STRINGER TO WALL DETAIL  
PD-9A SCALE: 3/4" = 1'-0"



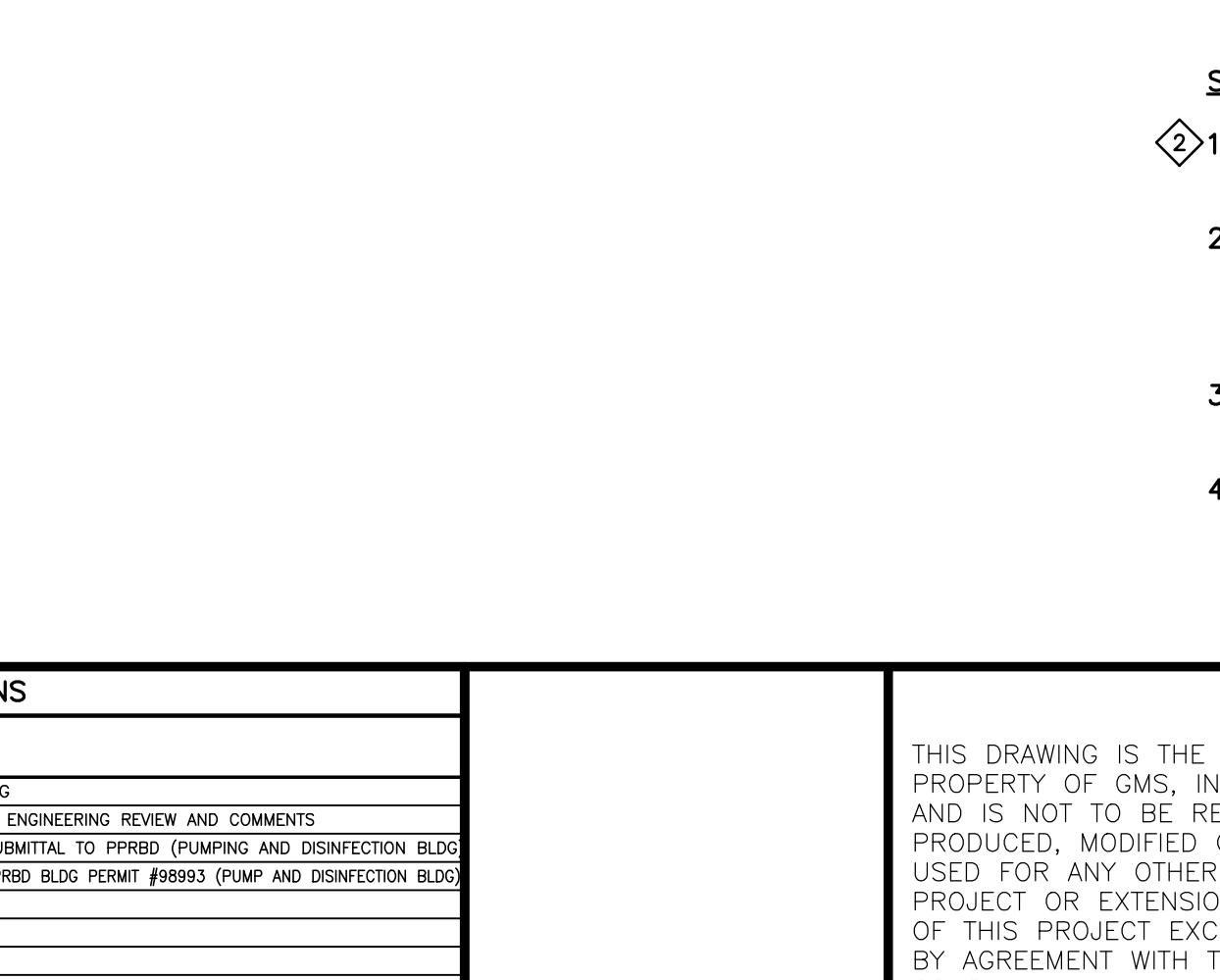
**P** LANDING DETAIL  
PD-9A SCALE: 3/4" = 1'-0"



**Q** WALKWAY/STEP DETAIL  
PD-9A SCALE: 3/4" = 1'-0"



**R** STAIRWAY TO WALKWAY DETAIL  
PD-9A SCALE: 3/4" = 1'-0"



**S** STAIRWAY TO WALKWAY DETAIL  
PD-9A SCALE: 3/4" = 1'-0"

**SHEET NOTES:**

1. ALL MISCELLANEOUS CHANNELS AND ANGLES SHALL BE HOT DIPPED GALVANIZED UNLESS OTHERWISE NOTED. ALL ANCHORS SHALL BE STAINLESS STEEL.
2. FIELD WELDING SHALL BE HELD TO A MINIMUM. WHERE FIELD WELDING IS ACCOMPLISHED, ALL WELD AREAS SHALL BE PREPARED, WELDED, FINISHED AND COATED ACCORDING TO THE PROJECT SPECIFICATIONS WITH A MINIMUM OF 2 COATS OF ZINC RICH PAINT.
3. REFER TO STAIR PLANS AND ARCHITECTURAL DRAWINGS FOR HANDRAIL REQUIREMENTS. HANDRAIL NOT SHOWN IN SECTIONS FOR CLARITY.
4. ALL BASE PLATES AND ANGLES ANCHORED TO FLOOR SLAB SHALL BE INSTALLED ON A 1" GROUT OR HDPE PAD.

REVISIONS		
NO.	DATE	DESCRIPTION
1	01/06/2012	ISSUED FOR VALUE ENGINEERING
2	01/25/2012	ISSUED FOR PD BUILDING VALUE ENGINEERING REVIEW AND COMMENTS
3	04/18/2012	ISSUED FOR BUILDING PERMIT SUBMITTAL TO PRPD (PUMPING AND DISINFECTION BLDG)
4	05/21/2012	ISSUED FOR CONSTRUCTION PER PRPD BLDG PERMIT #8893 (PUMP AND DISINFECTION BLDG)

THIS DRAWING IS THE PROPERTY OF GMS, INC., AND IS NOT TO BE REPRODUCED, MODIFIED OR USED FOR ANY OTHER PROJECT OR EXTENSION OF THIS PROJECT EXCEPT BY AGREEMENT WITH THIS COMPANY.

STRUCTURAL SECTIONS AND DETAILS		
HAROLD D. THOMPSON REGIONAL WATER RECLAMATION FACILITY LOWER FOUNTAIN METROPOLITAN SEWAGE DISPOSAL DISTRICT		
DRAWN: SKC	CHECKED: MG/JP	DATE: 2011
PROJECT NO. 20166.372	GMS FILE NO. 2599	
GMS, INC. CONSULTING ENGINEERS 611 N. WEBER, SUITE 300 COLORADO SPRINGS, COLORADO 80903		SHEET PD-9A OF -

XREF: FILENAME: G:\BASE.DWG: G:\PLOT STYLE FILE: 1000.ctb  
FILENAME: G:\FMSD\20166\372\PD9\PD9A.DWG