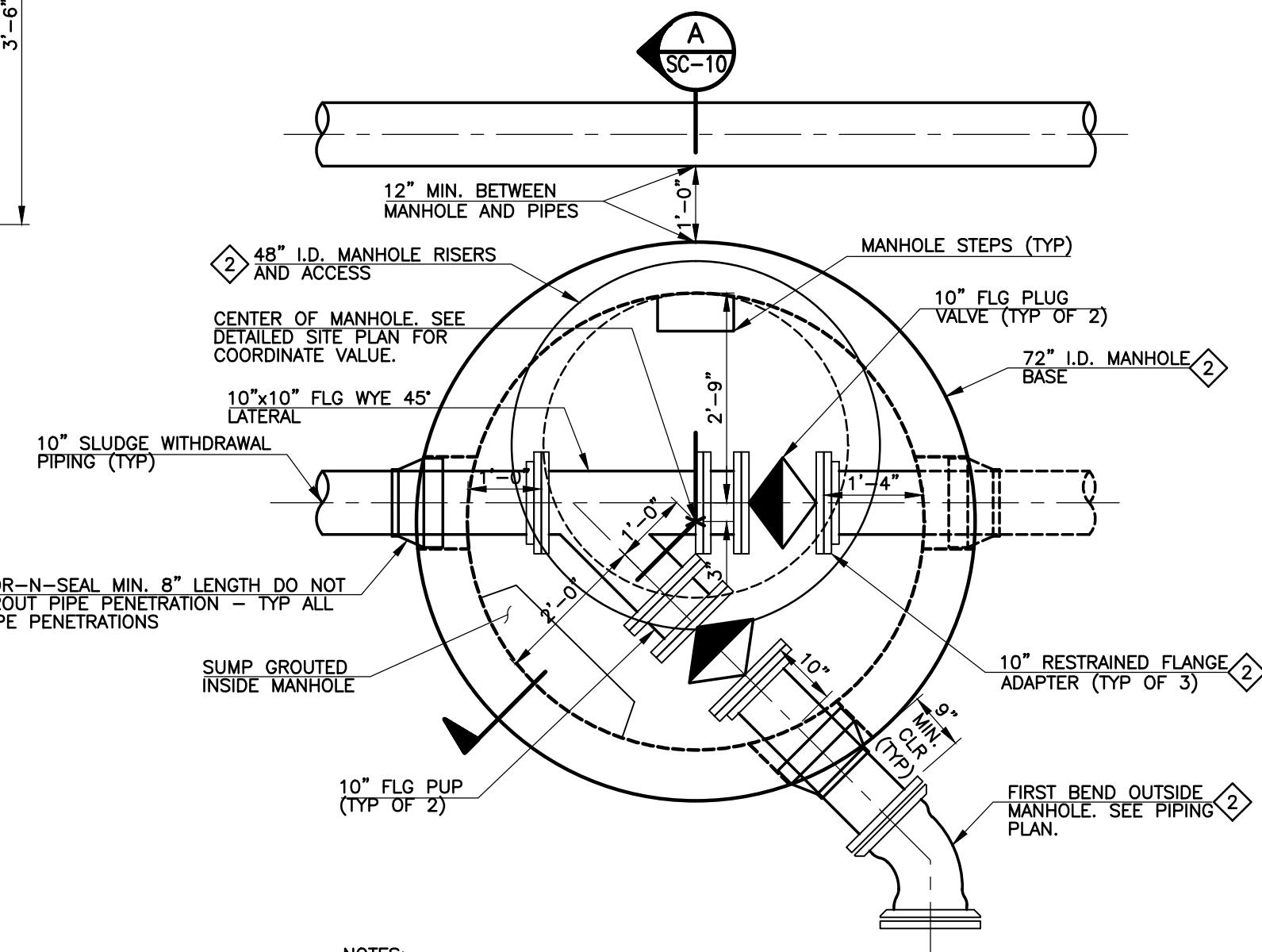
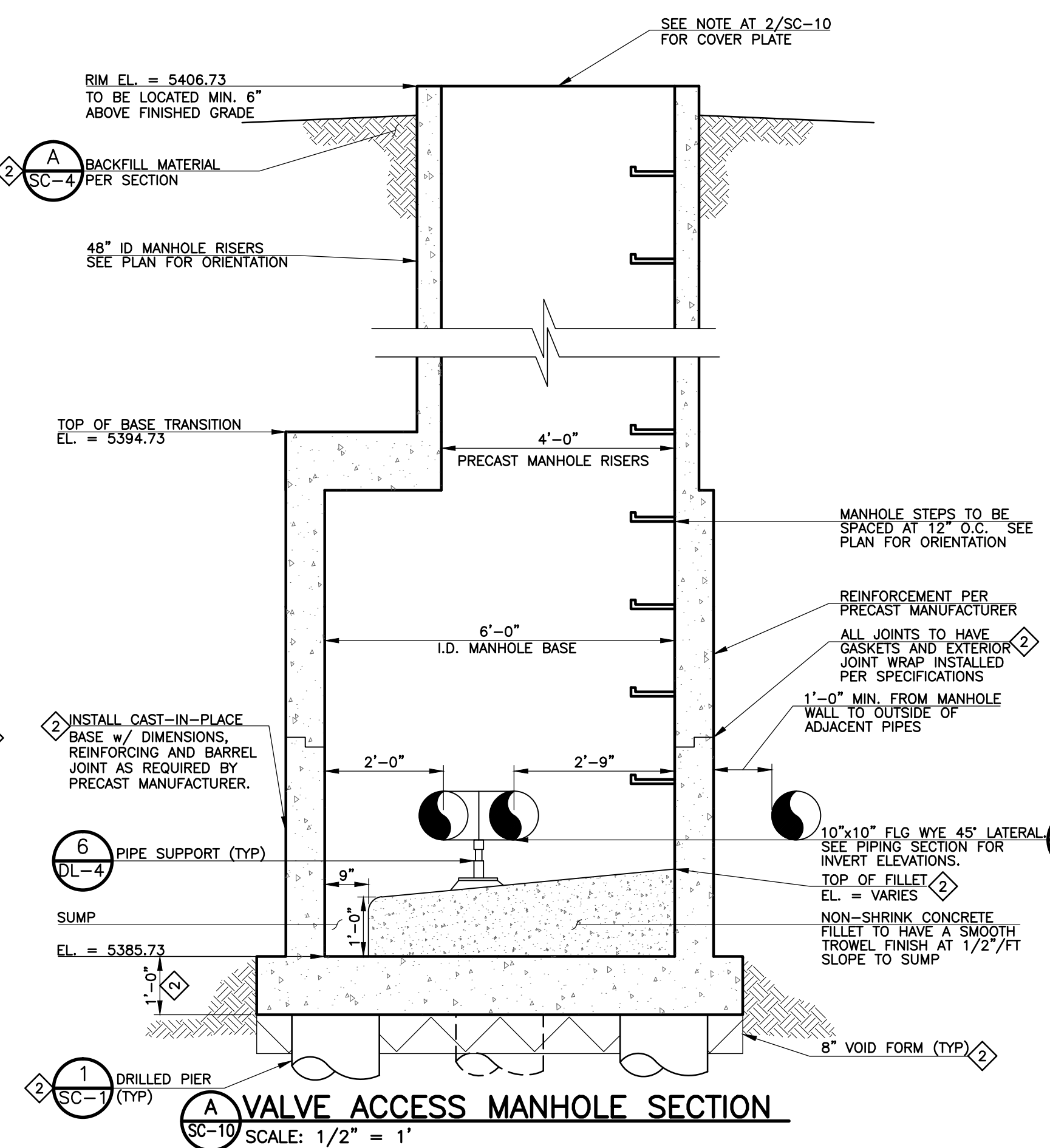


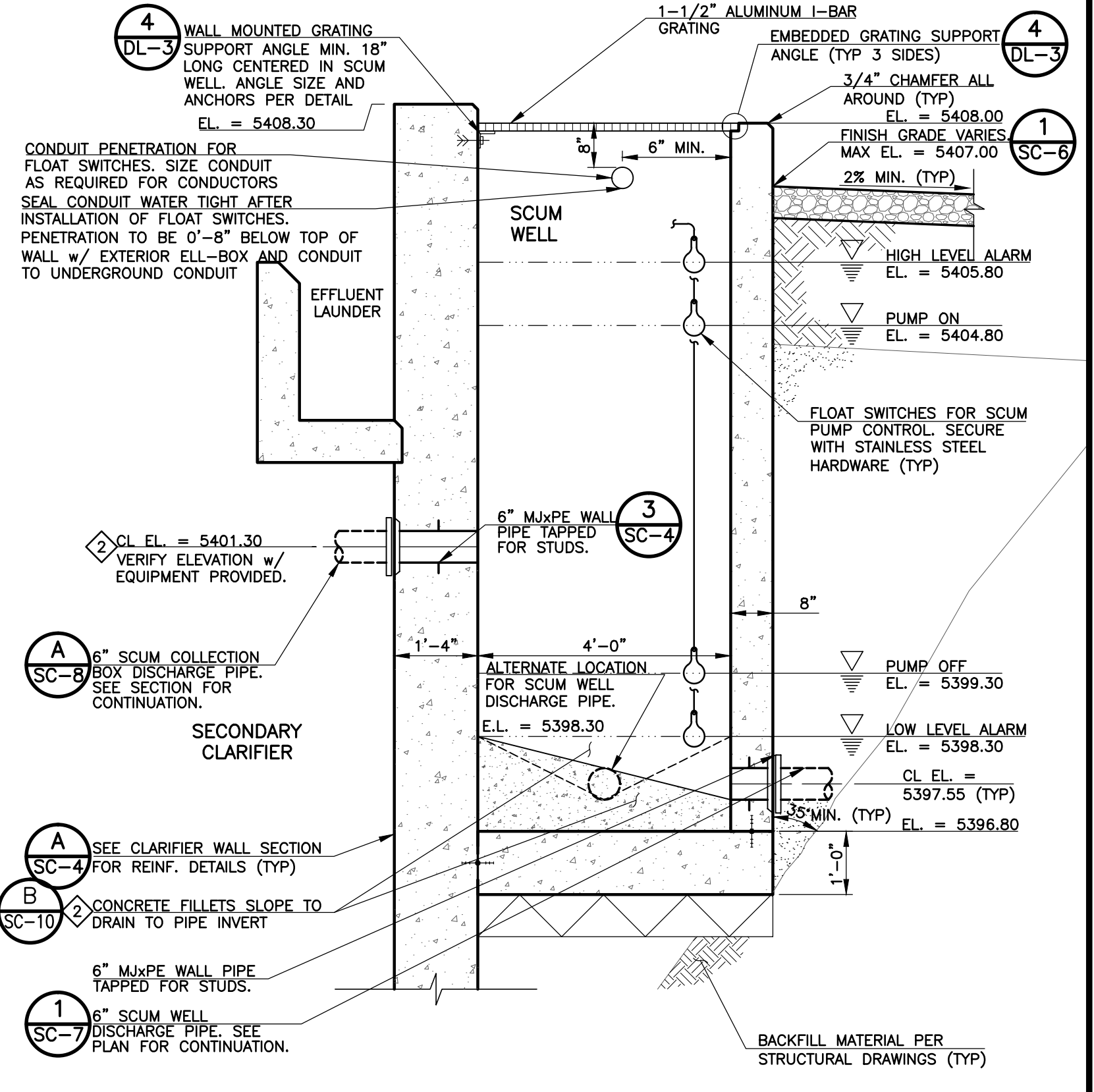
**1 SECONDARY CLARIFIER ACCESS DETAIL**  
 SC-10 SCALE: 3/4" = 1'



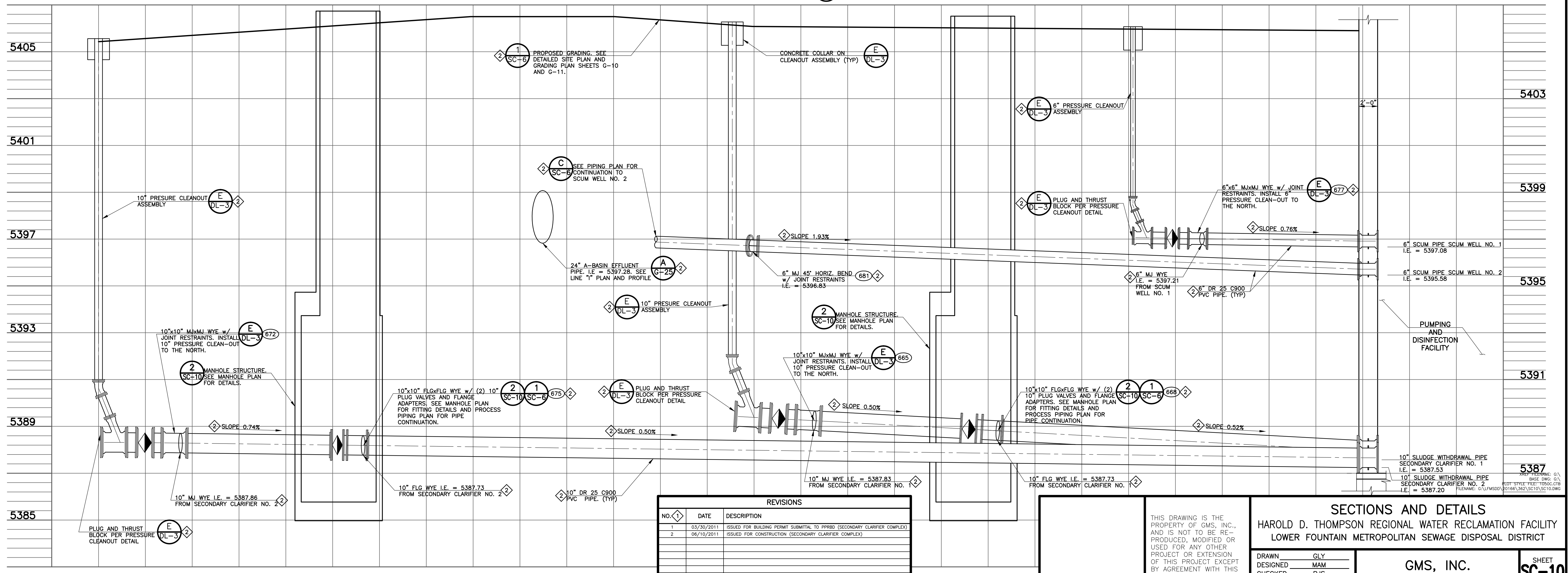
**2 VALVE ACCESS MANHOLE PLAN**  
 SC-10 SCALE: 1/2" = 1'



**A VALVE ACCESS MANHOLE SECTION**  
 SC-10 SCALE: 1/2" = 1'



**C SCUM WELL SECTION**  
 SC-10 SCALE: 1/2" = 1'



**B PIPING SECTION**  
 SC-10 SCALE: HORIZ. 1" = 5' VERT. 1" = 2'

REVISIONS		
NO.	DATE	DESCRIPTION
1	03/30/2011	ISSUED FOR BUILDING PERMIT SUBMITTAL TO PRRD (SECONDARY CLARIFIER COMPLEX)
2	06/10/2011	ISSUED FOR CONSTRUCTION (SECONDARY CLARIFIER COMPLEX)

THIS DRAWING IS THE PROPERTY OF GMS, INC., AND IS NOT TO BE REPRODUCED, MODIFIED OR USED FOR ANY OTHER PROJECT OR EXTENSION OF THIS PROJECT EXCEPT BY AGREEMENT WITH THIS COMPANY.

<b>SECTIONS AND DETAILS</b> HAROLD D. THOMPSON REGIONAL WATER RECLAMATION FACILITY LOWER FOUNTAIN METROPOLITAN SEWAGE DISPOSAL DISTRICT		<b>GMS, INC.</b> CONSULTING ENGINEERS 611 N. WEBER, SUITE 300 COLORADO SPRINGS, COLORADO 80903	SHEET <b>SC-10</b> OF -
DRAWN: GLY DESIGNED: MAM CHECKED: RJS DATE: 2010 PROJECT NO.: 20166.362 GMS FILE NO.: 2599	2011 GMS, INC.		

G:\ANSI\2010\10\10\SC10.dwg, SC10, 6/10/2011, 5:02:35 PM, mm, DWG to PDF.pc3, 11