

**GMS, INC.**  
**CONSULTING ENGINEERS**  
**611 NORTH WEBER, SUITE 300**  
**COLORADO SPRINGS, COLORADO 80903-1074**

TELEPHONE (719) 475-2935  
TELEFAX (719) 475-2938

EDWARD D. MEYER, P.E.  
ROGER J. SAMS, P.E.  
GREGORY R. WORDEN, P.E.  
THOMAS A. McCLERNAN, P.E.

KEN L. WHITE, P.L.S.  
DAVID R. FRISCH, P.L.S.  
MARK A. MORTON, P.E.  
JASON D. MEYER, P.E.

**ENGINEER'S SUPPLEMENTAL INSTRUCTIONS NO. EIGHTEEN (18)**  
**(Via Posting to FTP Site and Electronic Mail)**

TO: Wes Weaver  
John Jacob  
Jeff Burst  
Tyler Ammerman  
**Weaver Construction Management, Inc. (WCMI)**

DATE: February 28, 2012

FROM: Roger J. Sams, P.E.  
Mark A. Morton, P.E.  
**GMS, Inc.**

RE: Harold D. Thompson Regional Water Reclamation Facility (HDTRWRF)-Phase 1  
**ENGINEER'S SUPPLEMENTAL INSTRUCTIONS NO. EIGHTEEN (ESI-018)**

This ESI-018 provides additional information to assist in placing the structural equipment pad beneath the electrical gear in the Equipment Maintenance and Storage Building. The pad will be placed on top of the structural slab along the west side of the electrical room. From previous discussions with the Contractor and his subcontractors, it has been decided that the blockouts in the structural equipment pad will be formed with a nominal ½-inch thick masonite material placed directly against the conduits. Under no circumstances shall the structural equipment pad be bonded or otherwise connected to the underslab conduits in order to allow the conduits to move freely and independently from the structural equipment pad and floor slab. Refer to the attached Detail 1/EM-6 for additional details.

Attachment:  
Detail 1 from Sheet EM-6

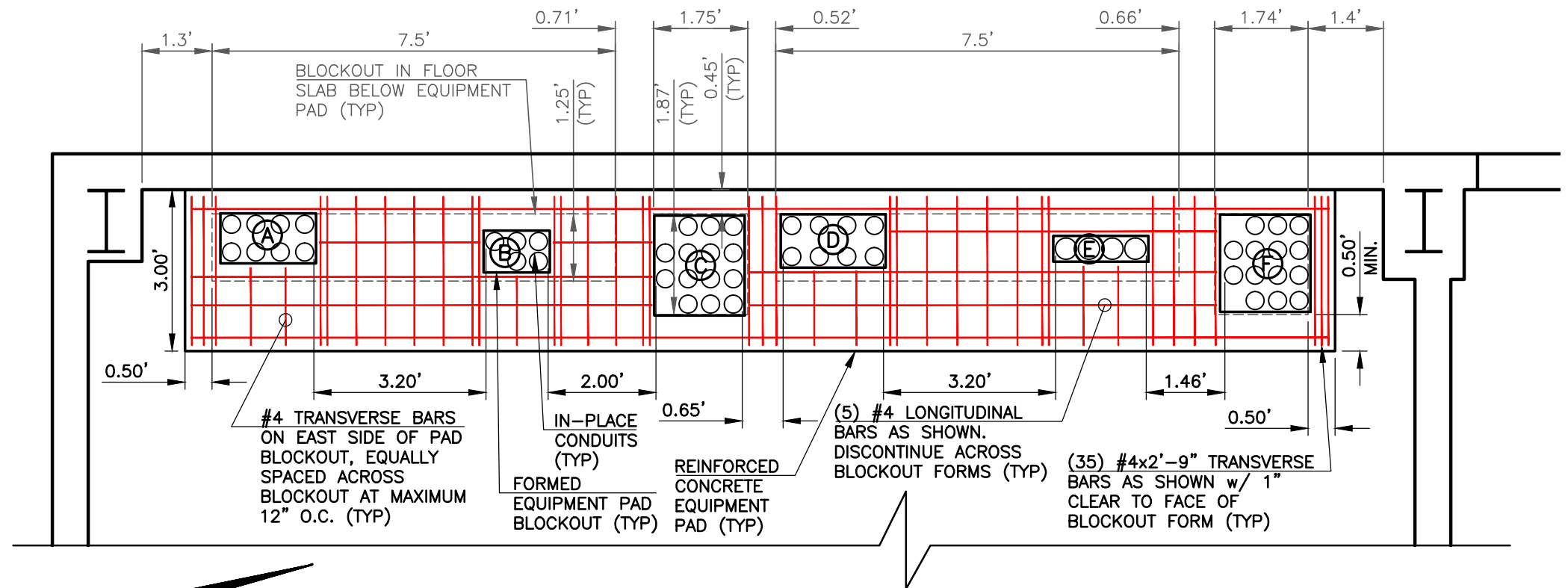
ec: Lower Fountain Metropolitan Sewage Disposal District  
Fountain Sanitation District  
Colorado Centre Metropolitan District

cc: Jerry Miller, GMS, Inc.  
David R. Frisch, P.L.S., GMS, Inc.

**NOTES:**

1. STRUCTURAL EQUIPMENT PAD SHALL BE MINIMUM 5-1/2" THICK PLACED DIRECTLY ON TOP OF FLOOR SLAB.
2. PLACE TRANSVERSE REINFORCING BARS IN BOTTOM OF EQUIPMENT PAD AT 2" CLEAR SPACING. PLACE LONGITUDINAL REINFORCING BARS ON TOP OF TRANSVERSE BARS.
3. EQUIPMENT PAD BLOCKOUTS TO BE FORMED WITH NOMINAL 1/2" MASONITE MATERIAL PLACED AGAINST CONDUITS UNLESS OTHERWISE NOTED.
4. PLACE REINFORCING BARS AS SHOWN WITH 1" CLEAR SPACING TO FACE OF BLOCKOUT FORMS.
5. DO NOT BOND OR OTHERWISE SECURE THE EQUIPMENT PAD TO THE CONDUITS. THE CONDUITS MUST BE ALLOWED TO MOVE FREELY AND INDEPENDENTLY FROM THE STRUCTURAL EQUIPMENT PAD AND FLOOR SLAB.
6. FIELD VERIFY EQUIPMENT PAD BLOCKOUT SIZES (W=NORTH/SOUTH DIMENSIONS, H=EAST/WEST DIMENSION):

- |                   |                   |
|-------------------|-------------------|
| (A) 1.78'Wx0.93'H | (D) 1.95'Wx0.99'H |
| (B) 1.23'Wx0.78'H | (E) 1.77'Wx0.48'H |
| (C) 1.68'Wx1.86'H | (F) 1.68'Wx1.81'H |



1
EM-6
**STRUCTURAL EQUIPMENT PAD FOR ELECTRICAL GEAR**  
 SCALE: 3/8" = 1'-0"