

GMS, INC.
CONSULTING ENGINEERS
611 NORTH WEBER, SUITE 300
COLORADO SPRINGS, COLORADO 80903-1074

TELEPHONE (719) 475-2935
TELEFAX (719) 475-2938

EDWARD D. MEYER, P.E.
ROGER J. SAMS, P.E.
GREGORY R. WORDEN, P.E.
THOMAS A. McCLERNAN, P.E.

KEN L. WHITE, P.L.S.
DAVID R. FRISCH, P.L.S.
MARK A. MORTON, P.E.
JASON D. MEYER, P.E.

December 5, 2011

Mr. Wes Weaver, President
Weaver Construction Management, Inc.
3679 South Huron Street, Suite 404
Englewood, CO 80110

***Via Email to: wes@weavergc.com
No Hard Copy to Follow***

Re: Harold D. Thompson Regional Water Reclamation Facility (HDTRWRF)
Lower Fountain Metropolitan Sewage Disposal District (LFMSDD)

Dear Wes:

Reference is made to your shop submittal identified as follows:

Submittal No.:	11332-001A
Date of Submittal:	October 26, 2011
Title:	Cleanwash Screw Wash Presses, Model SWP20-80 & Control Panels, Tag SW-1 & SW-2 – Submittal Letter and Revised Drawings
Specification Section:	11332 – Screenings Compactor
Manufacturer:	WesTech; Swedrive AB; Baldor Electric Co.; ASCO

The referenced submittal has been stamped "***No Exception Taken***". No additional information or resubmittal is required on this item.

Please call if you should have any questions.

Sincerely,



David R. Frisch, P.L.S.

DRF/kmw
Attachments

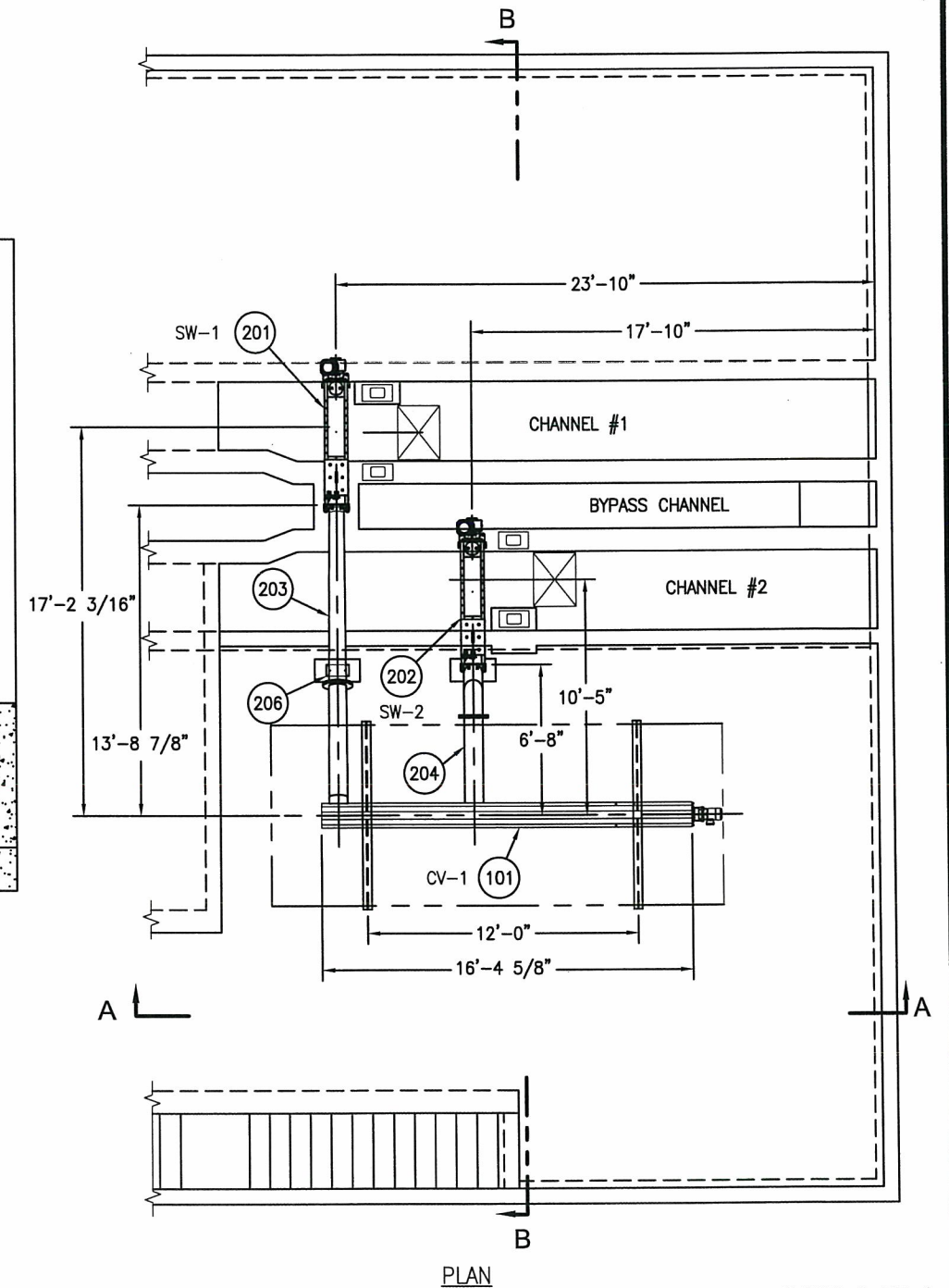
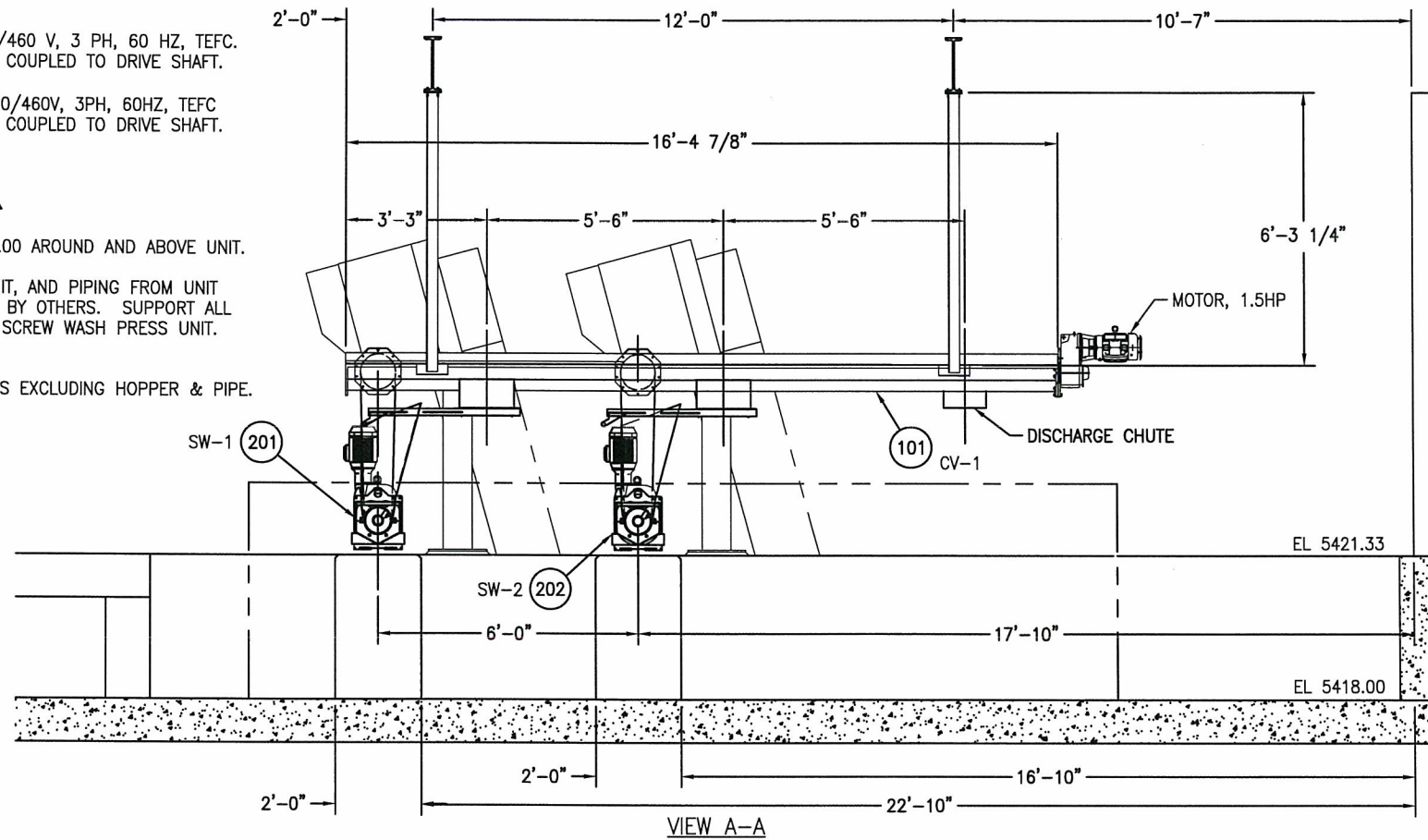
ec (w/attachments):

Mr. Jim Heckman, Manager, LFMSDD, jfmanager@lfmsdd.org
Ms. Cindy Murray, Office Manager, Fountain Sanitation District, fsdistrict@fsd901.org
Mr. John Jacob, Project Mgr., Weaver Construction Management, Inc., john@weavergc.com
Mr. Tyler Ammerman, Weaver Construction Management, Inc., tammerman@weavergc.com
Ms. Leslie Brown, Weaver Construction Management, Inc., leslie@weavergc.com
Mr. Jeff Burst, Project Supt., Weaver Construction Management, Inc., jeff@weavergc.com

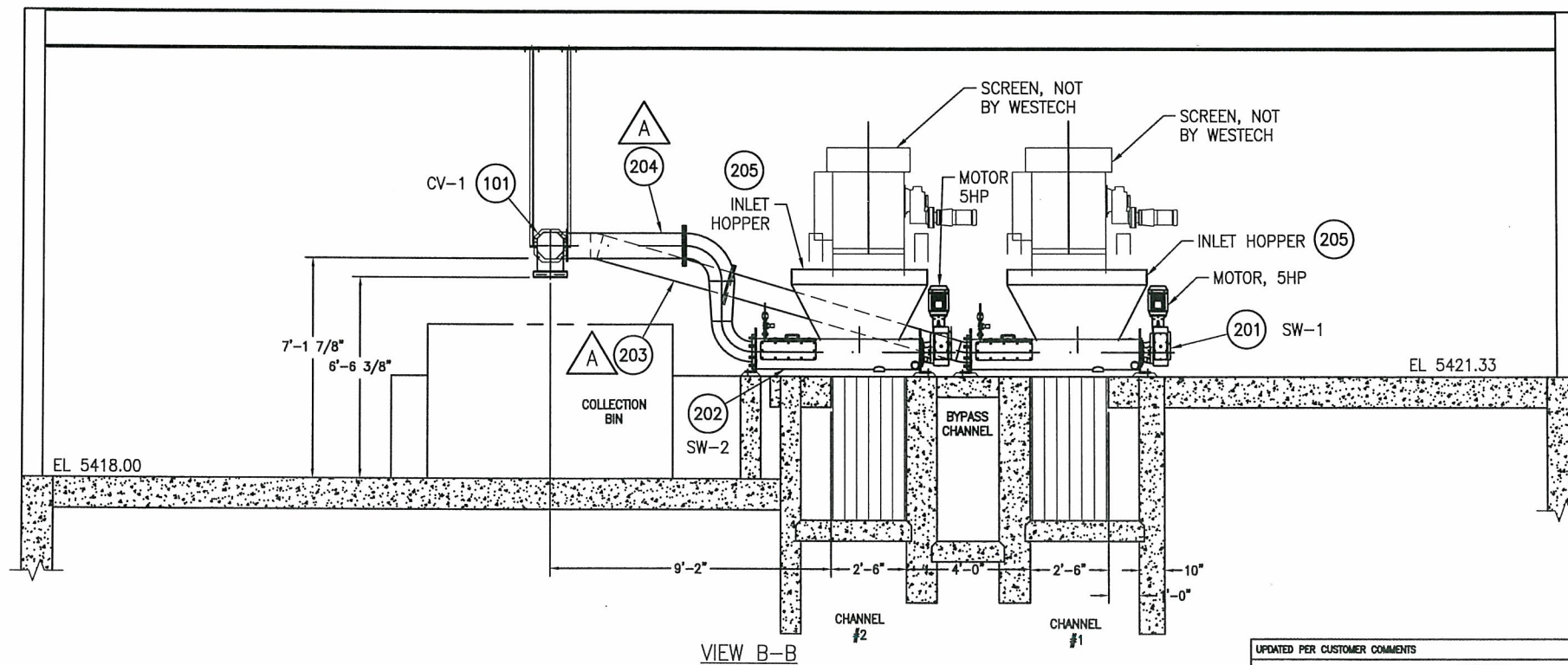
cc: Mr. Jerry Miller, Resident Project Representative, GMS, Inc.

NOTES:

- ALL 304 STAINLESS STEEL CONSTRUCTION EXCEPT FOR MOTOR, REDUCER, SPIRAL, DRIVE SHAFT, AND ELECTRICAL ITEMS.
- DRIVE SYSTEM
SCREW WASH PRESSES:
A. MOTOR: 5 HP, 1800 RPM, 230/460 V, 3 PH, 60 HZ, TEFC.
B. REDUCER: HELICAL WORM GEAR COUPLED TO DRIVE SHAFT.
CONVEYOR:
C. MOTOR: 1.5 HP, 1800 RPM, 230/460V, 3PH, 60HZ, TEFC
D. REDUCER: HELICAL WORM GEAR COUPLED TO DRIVE SHAFT.
- SPIRAL SPEED:
SCREW WASH PRESS: 15 RPM $\triangle A$
CONVEYOR: 16 RPM
- RECOMMENDED CLEARANCE TO BE 36.00 AROUND AND ABOVE UNIT.
- ALL INTERCONNECTING WIRING, CONDUIT, AND PIPING FROM UNIT MOUNTED DEVICES WILL BE SUPPLIED BY OTHERS. SUPPORT ALL EXTERNAL PIPING INDEPENDENTLY OF SCREW WASH PRESS UNIT.
- WEIGHTS:
A. SCREW WASH PRESS - 620 LBS EXCLUDING HOPPER & PIPE.
B. CONVEYOR: 1150 LBS



SHEET 1 OF 4



PREPARED FOR: HAROLD D THOMPSON WRF
FOUNTAIN, CO
ENGINEER: GMS, INC.
COLORADO SPRINGS, CO
CONTRACTOR: WEAVER CONSTRUCTION MANAGEMENT, INC.
ENGLEWOOD, CO
PROJECT ORDER NO.: 9103 / 11360

GENERAL ARRANGEMENT - (2) SCREW WASH PRESS / (1) CONVEYOR

DESCRIPTION
SWP20-80 / CVH260-5000

DATE	STD. BY	STD. CHKD.	STD. APPVD.	SCALE	DATE	PROJ. BY	PROJ. CHKD.	PROJ. APPVD.
				NONE	09-11	MWB	PCH	JPW

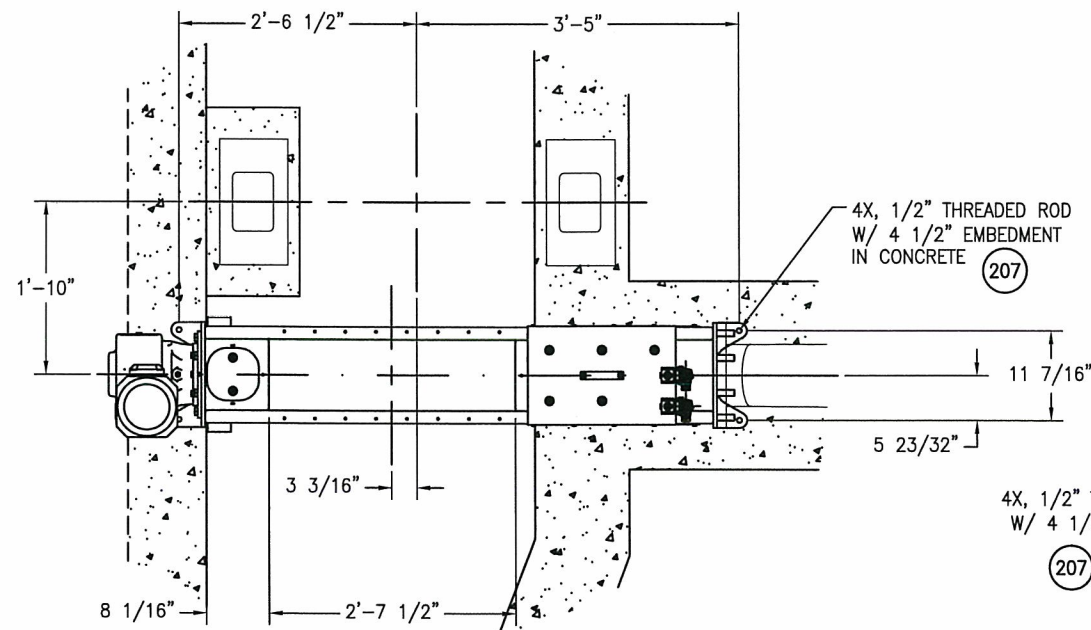
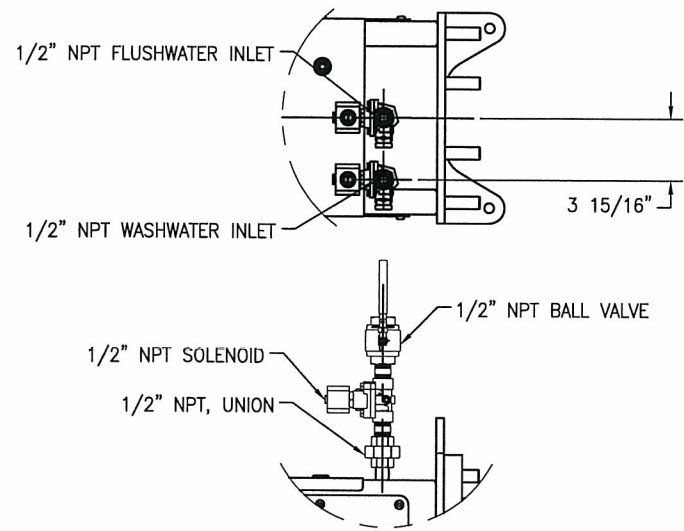
ALL COMPONENTS MUST BE FABRICATED AND MACHINED ACCORDING TO WESTECH STANDARD SPECIFICATION (DRAWING P24Z-024A), UNLESS SPECIFICALLY NOTED ON THIS DRAWING.

This drawing is property of WESTECH ENGINEERING, INC. and is transmitted in confidence. Neither receipt nor possession confers or transfers any rights to reproduce, use, or disclose, in whole or in part, data contained herein for any purpose, without the written permission of WESTECH ENGINEERING, INC., Salt Lake City, Utah

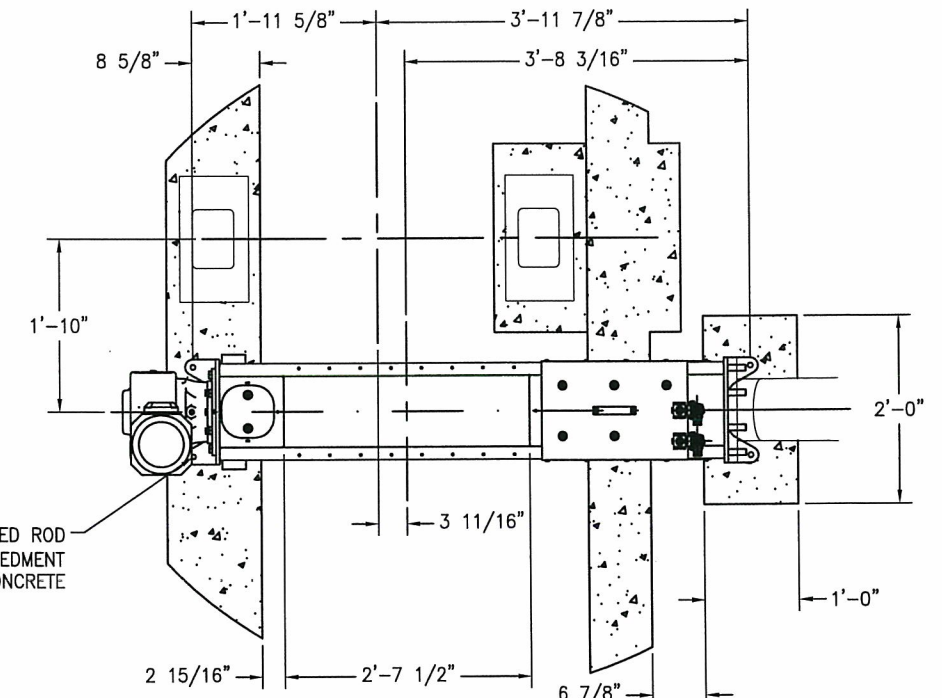
DRAWING NUMBER	PROJECT NUMBER	REV.
21393AB-D101	21393AB	$\triangle A$

DATE	BY	CHKD.	DATE	LTR
10-24-11	JPW	CHKD.		

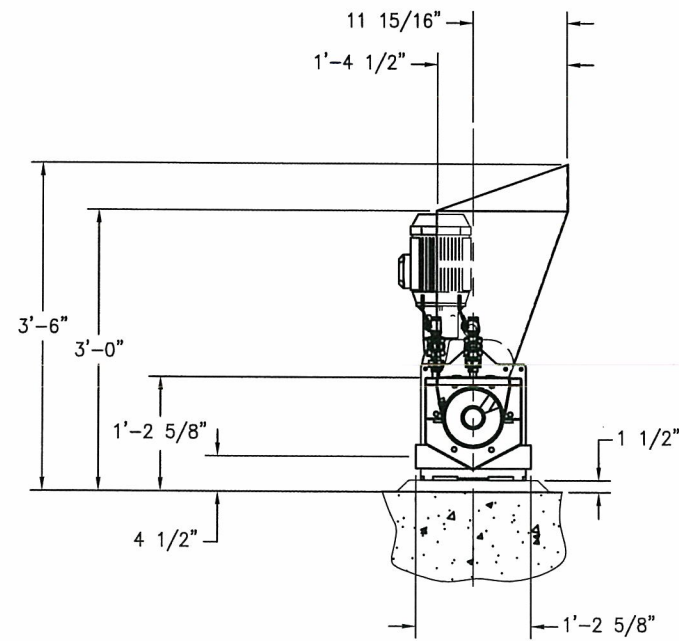
Summit No. 11332-001A



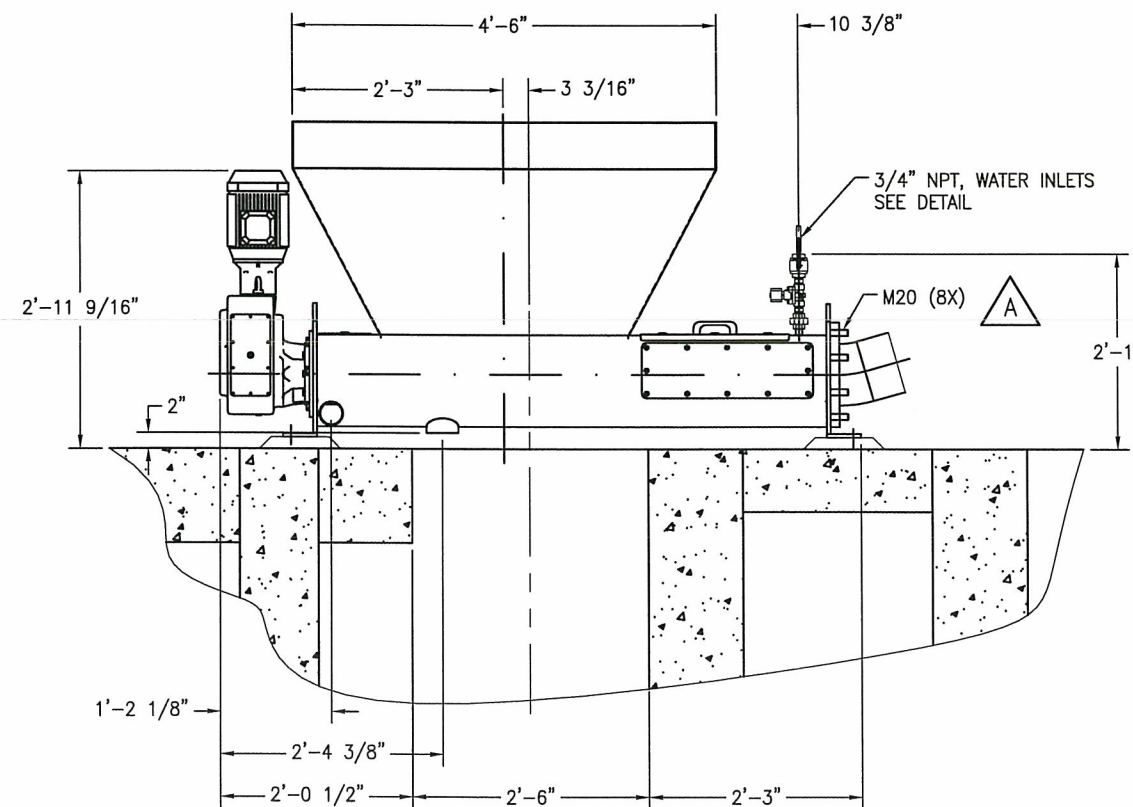
SCREW WASH PRESS - PLAN
CHANNEL 1



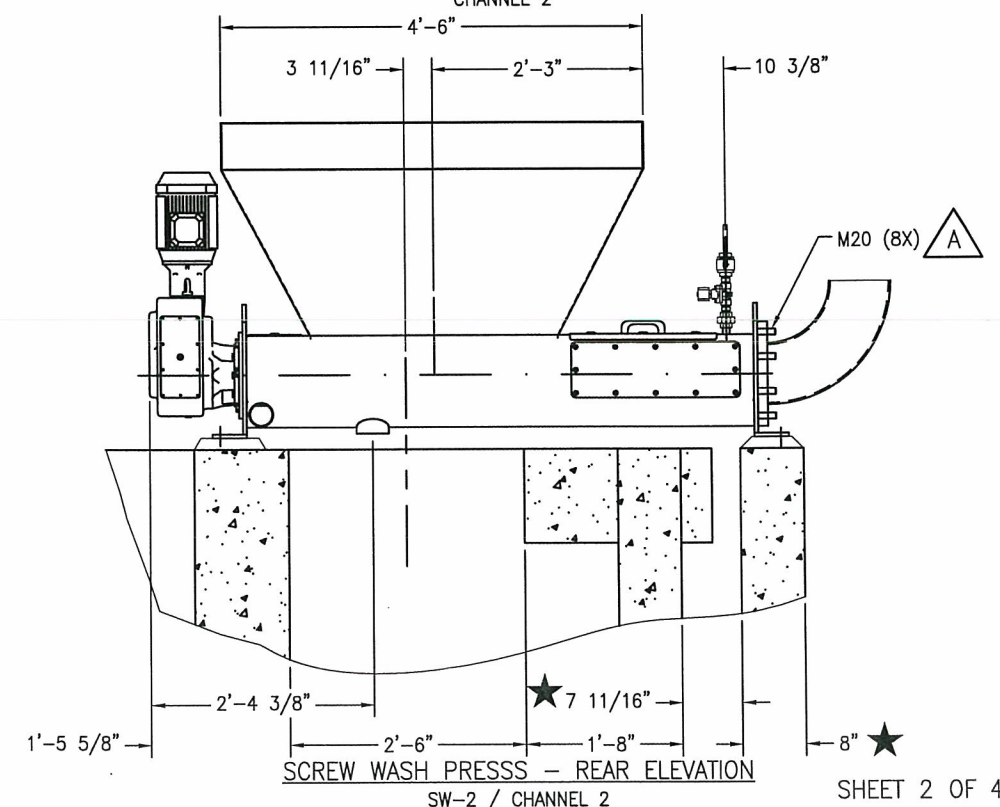
SCREW WASH PRESS - PLAN
CHANNEL 2



SCREW WASH PRESS - ELEVATION
TYP CHANNELS 1 & 2



SCREW WASH PRESS - REAR ELEVATION
SW-1 / CHANNEL 1

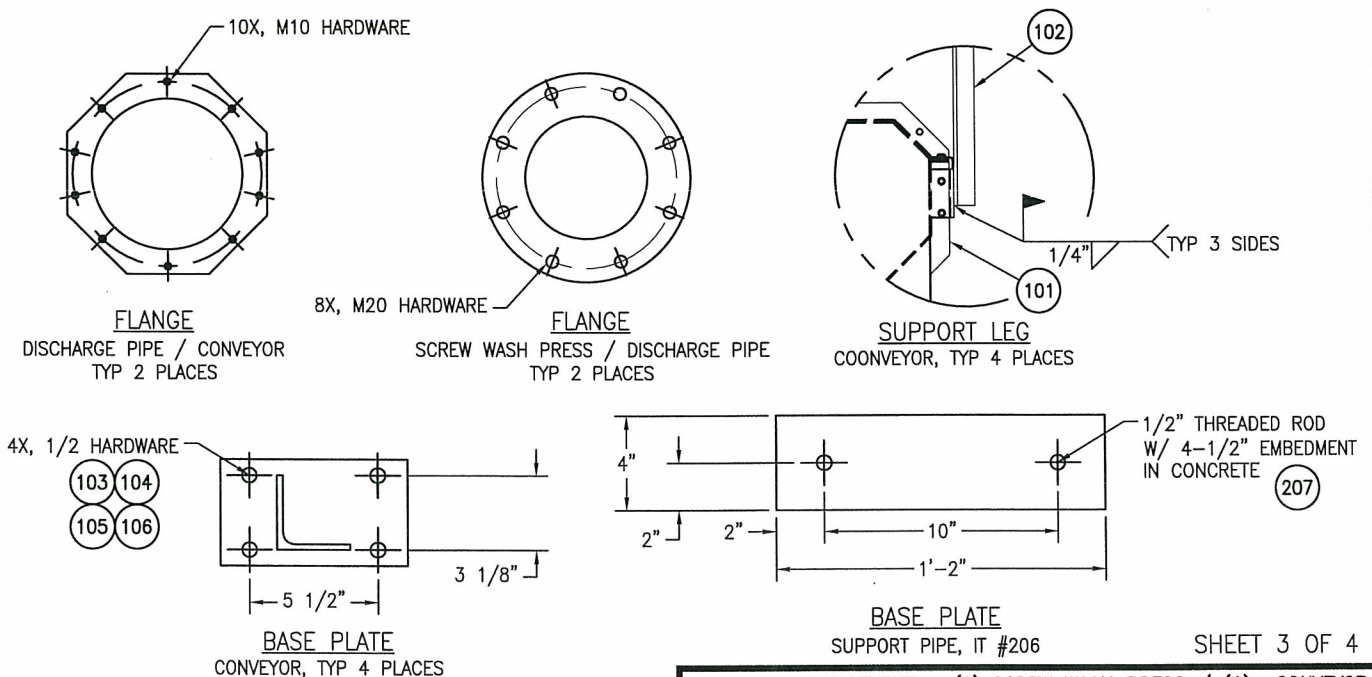
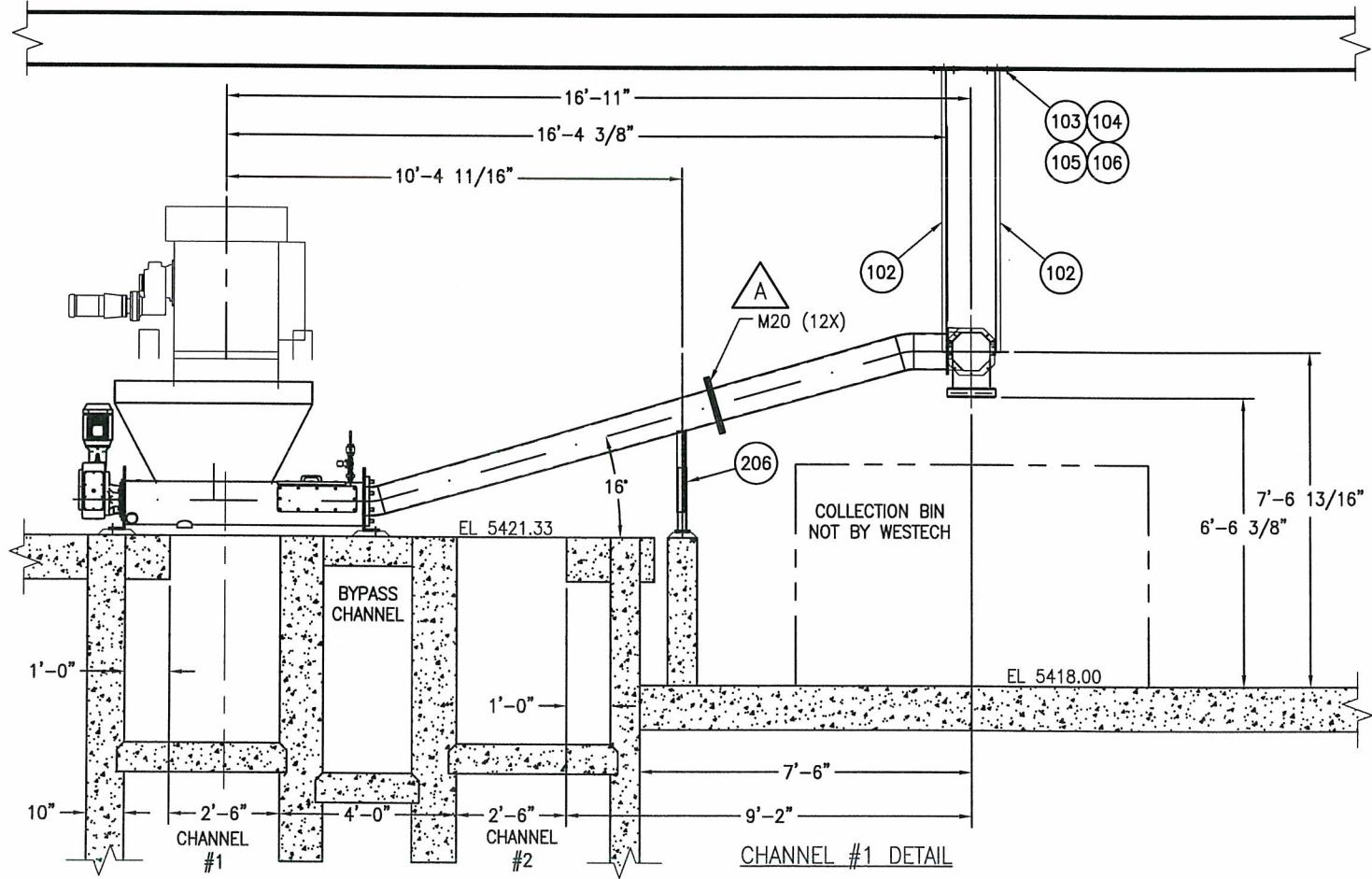
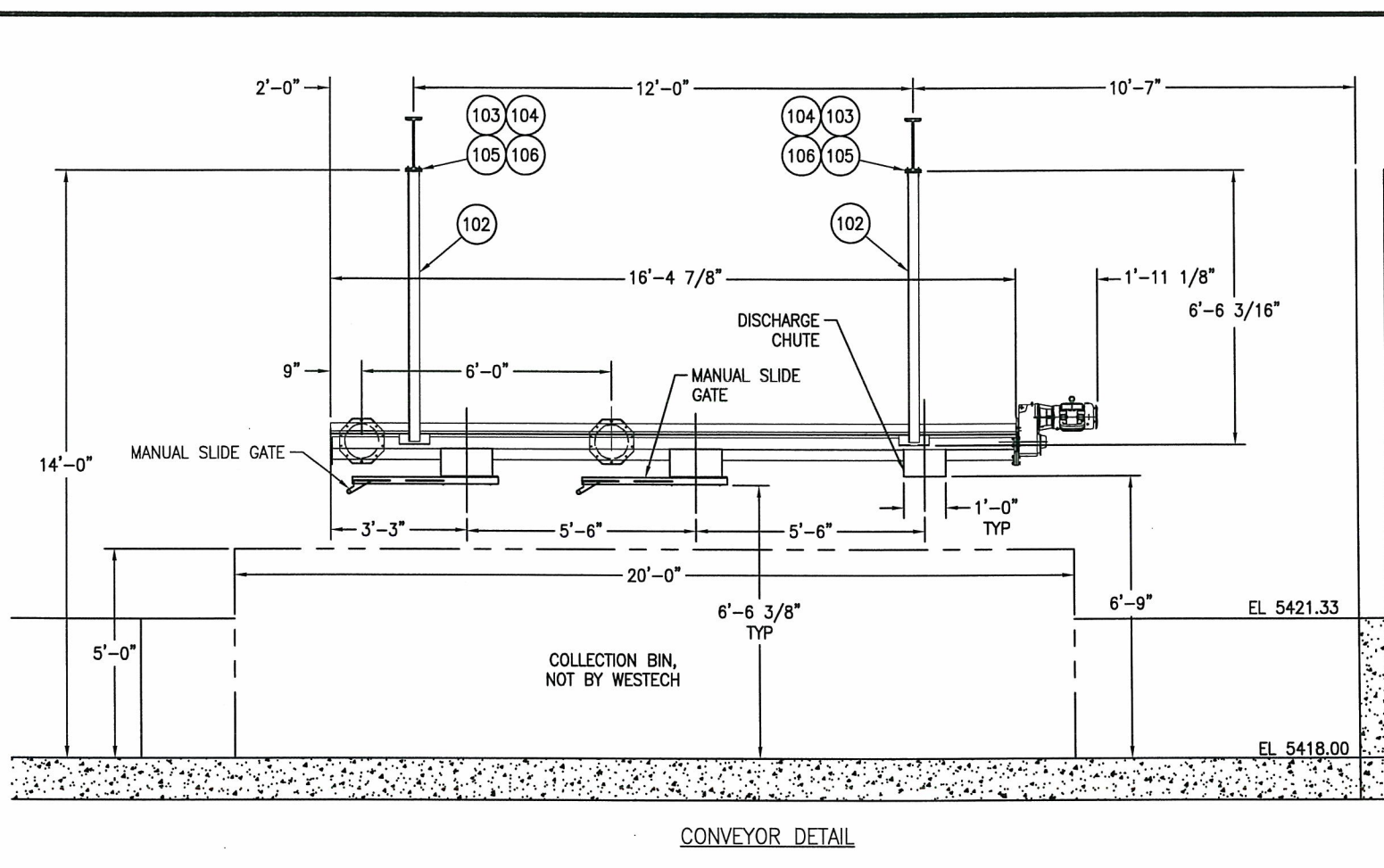
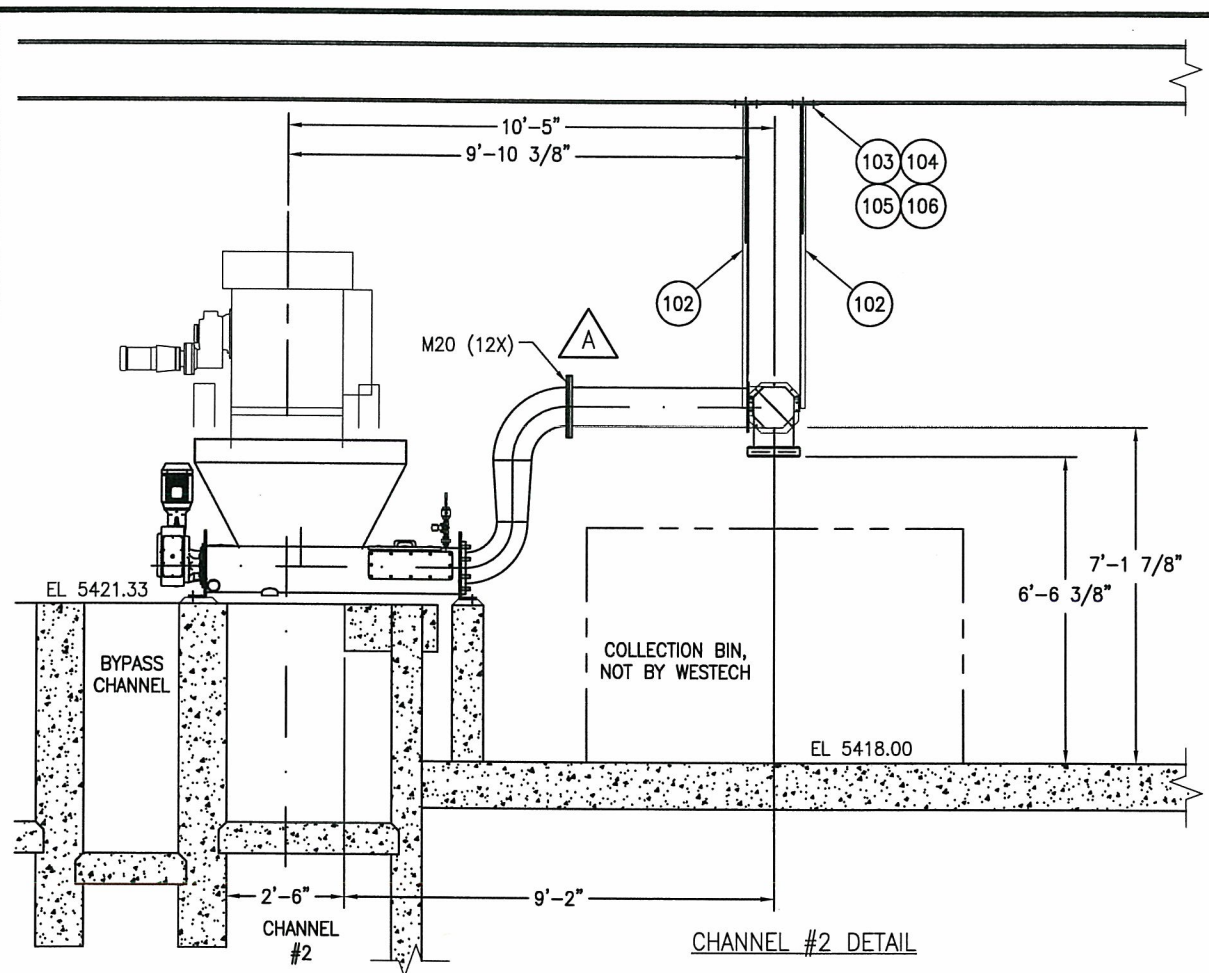


SCREW WASH PRESS - REAR ELEVATION
SW-2 / CHANNEL 2

SHEET 2 OF 4

GENERAL ARRANGEMENT - (2) SCREW WASH PRESS / (1) CONVEYOR									
DESCRIPTION									
SWP20-80 / CVH260-5000									
TYPE									
NONE									
DATE									
SCALE									
ALL COMPONENTS MUST BE FABRICATED AND MACHINED ACCORDING TO WESTECH STANDARD SPECIFICATION (DRAWING P24Z-024A), UNLESS SPECIFICALLY NOTED ON THIS DRAWING.									
This drawing is property of WESTECH ENGINEERING, INC. and is transmitted in confidence. Neither receipt nor possession confers or transfers any rights to reproduce, use, or disclose, in whole or in part, data contained herein for any purpose, without the written permission of WESTECH ENGINEERING, INC., Salt Lake City, Utah									
DRAWING NUMBER					PROJECT NUMBER				
21393AB-D101					21393AB				

UPDATED PER CUSTOMER COMMENTS	MWB	JPW	10-24-11	△
REVISION	BY	CHKD	DATE	LTR



SHEET 3 OF 4

GENERAL ARRANGEMENT - (2) SCREW WASH PRESS / (1) CONVEYOR									
DESCRIPTION									
SWP20-80 / CVH260-5000									
TYPE					SIZE				
NONE					09-11 MWB PCH JPW				
DATE	STD. BY	STD. CHKD.	STD. APPVD.	SCALE	DATE	PROJ. BY	PROJ. CHKD.	PROJ. APPVD.	
ALL COMPONENTS MUST BE FABRICATED AND MACHINED ACCORDING TO WESTECH STANDARD SPECIFICATION (DRAWING P24Z-024A), UNLESS SPECIFICALLY NOTED ON THIS DRAWING.									
This drawing is property of WESTECH ENGINEERING, INC. and is transmitted in confidence. Neither receipt nor possession confers or transfers any rights to reproduce, use, or disclose, in whole or in part, data contained herein for any purpose, without the written permission of WESTECH ENGINEERING, INC., Salt Lake City, Utah.									
DRAWING NUMBER					PROJECT NUMBER				
21393AB-D101					21393AB				

UPDATED PER CUSTOMER COMMENTS	MWB	JPW	10-24-11	LTR
REVISION	BY	CHKD.	DATE	

1. A STAR DENOTES VARIANCE FROM CONTRACT DOCUMENTS AND SHOULD BE PARTICULARLY NOTED. ★
2. CONTRACTOR TO VERIFY OR SUPPLY ON APPROVAL ALL DIMENSIONS SHOWN IN CLOUD. ☁
3. THE FOLLOWING DEFINES THE RESPONSIBILITY OF WESTECH ENGINEERING INC. WITH REGARD TO THE INFORMATION AND DIMENSIONS SHOWN ON THE DRAWINGS.
 - (A) THIS DRAWING IS NOT TO BE USED FOR CONSTRUCTION OR INSTALLATION PURPOSES UNTIL IT BEARS THE APPROVAL OF THE OWNER, THE ENGINEER OR THEIR DULY AUTHORIZED REPRESENTATIVE.
 - (B) DIMENSIONS, LOADS, AND OTHER INFORMATION ARE PROVIDED TO ACCOMMODATE THE EQUIPMENT TO THE STRUCTURE AS SHOWN.
 - (C) WESTECH IS NOT RESPONSIBLE FOR CONCRETE DESIGN. THE CUSTOMER IS TO PROVIDE REINFORCING STEEL AND DETERMINE SIZES TO SUIT LOCAL REQUIREMENTS.
 - (D) WESTECH IS NOT RESPONSIBLE FOR DAMAGE, INJURY OR LOSS RESULTING FROM INCORPORATION OR USE OF THIS EQUIPMENT.
 - (E) CHARGES FOR MODIFICATIONS, ADDITIONS OR CORRECTIONS TO THE EQUIPMENT WILL NOT BE ACCEPTED BY WESTECH, UNLESS PRIOR APPROVAL IS OBTAINED IN WRITING FROM AN AUTHORIZED WESTECH REPRESENTATIVE.
4. WESTECH DOES NOT FURNISH CONCRETE, GROUT, CONCRETE REINFORCING, PIPING, VALVES, PIPE SUPPORTS OR FITTINGS, WALL BRACKETS, ELECTRICAL WIRING, CONDUIT, OR ELECTRICAL EQUIPMENT, ERECTION, FIELD PAINTING OR PAINT, FIELD WELDING OR WELD ROD, WATER FOR TESTING, GREASE, OR LUBRICATING OIL, EXCEPT AS SPECIFICALLY NOTED.
5. DRIVE SHALL BE FINISHED WITH MANUFACTURER'S STANDARD PAINT.
6. SURFACE PREPARATION TO CONSIST OF:
 STAINLESS STEEL: SOLVENT CLEANED
 STEEL SCREW: SSPC-SP10 NEAR WHITE METAL BLAST
7. SHOP PAINTING TO CONSIST OF:
 STAINLESS STEEL: NONE
 STEEL SCREWS: ONE (1) COAT OF EPOXY PRIMER (3-6 MILS)
8. ANCHORS:
 UNIT ANCHORAGE DESIGNED AROUND RED HEAD A7 ADHESIVE SYSTEM.
 ANCHOR BOLT DIMENSIONS SHOWN ARE FOR REFERENCE ONLY.
 USE BASE PLATES & BRACKETS AS TEMPLATES TO LOCATE ANCHOR BOLTS.
9. ALL ASSEMBLY FASTENERS TO BE: 18-8 SS

GENERAL NOTES - (2) SCREW WASH PRESS / (1) CONVEYOR									
DESCRIPTION									
SWP20-80 / CVH260-5000									
TYPE									
SIZE									
NONE									
09-11									
MWB									
PCH									
JPW									
DATE	STD. BY	STD. CHKD.	STD. APPVD.	SCALE	DATE	PROJ. BY	PROJ. CHKD.	PROJ. APPVD.	
ALL COMPONENTS MUST BE FABRICATED AND MACHINED ACCORDING TO WESTECH STANDARD SPECIFICATION (DRAWING P24Z-024A), UNLESS SPECIFICALLY NOTED ON THIS DRAWING.									
This drawing is property of WESTECH ENGINEERING, INC. and is transmitted in confidence. Neither receipt nor possession confers or transfers any rights to reproduce, use, or disclose, in whole or in part, data contained herein for any purpose, without the written permission of WESTECH ENGINEERING, INC., Salt Lake City, Utah									
DRAWING NUMBER					PROJECT NUMBER				
21393AB-D101					21393AB				
REV.					REV.				
A					A				

NO CHANGES THIS SHEET	MWB	JPW	10-24-11	△
REVISION	BY	CHKD	DATE	LTR

