

GMS, INC.
CONSULTING ENGINEERS
611 NORTH WEBER, SUITE 300
COLORADO SPRINGS, COLORADO 80903-1074

TELEPHONE (719) 475-2935
TELEFAX (719) 475-2938

EDWARD D. MEYER, P.E.
ROGER J. SAMS, P.E.
GREGORY R. WORDEN, P.E.
THOMAS A. McCLERNAN, P.E.

KEN L. WHITE, P.L.S.
DAVID R. FRISCH, P.L.S.
MARK A. MORTON, P.E.
JASON D. MEYER, P.E.

December 10, 2012

Mr. Wes Weaver, President
Weaver Construction Management, Inc.
3679 South Huron Street, Suite 404
Englewood, CO 80110

Via Email to: wes@weavercm.com
No Hard Copy to Follow

Re: Harold D. Thompson Regional Water Reclamation Facility (HDTRWRF)
Lower Fountain Metropolitan Sewage Disposal District (LFMSDD)

Dear Wes:

Reference is made to your shop submittal identified as follows:

Submittal No.:	11373-002D
Date of Submittal:	December 10, 2012
Title:	Substitute Pressure Transmitter Equipment for Multistage Centrifugal Blowers ASB-1 thru ASB-4
Specification Section:	11373 – Blowers
Manufacturer:	Wika Instrument Corporation

The referenced submittal has been stamped "**No Exception Taken**". No additional information or resubmittal is required on this item. Our comments are as follows:

1. The Wika pressure transmitter and diaphragm seal included in this submittal are proposed as a substitute to the American Sensor Technologies (AST) pressure sensor included in Submittal No. 11373-002A and its companion cooling extension received via email on October 19, 2012. The AST sensor did not meet the specified temperature requirements and its combined installation with the cooling extension could not be provided with a manufacturer's published temperature rating. Therefore, the Wika products are proposed as a substitute, to which we have the following comments.
 - a. We take no exception to the Wika Model S-11 pressure transmitter with integral cooling element and Viton seal material, furnished without the flush diaphragm process connection as submitted.
 - b. We take no exception to the submitted diaphragm seal, Wika Model L990.34, ½x½ M-0, SS, SS, SS as confirmed via email by WCMI. Coordination email correspondence with WCMI has been attached to this letter for reference and verification.

Mr. Wes Weaver
December 10, 2012
Page 2

Please call if you should have any questions.

Sincerely,



Mark A. Morton, P.E.

MAM/kmw
Attachments

ec (w/attachments):

Mr. Jim Heckman, Manager, LFMSDD, lfmanager@lfmsdd.org

Ms. Cindy Murray, Office Manager, Fountain Sanitation District, fsdistrict@fsd901.org

Mr. Jeff Burst, Project Supt., Weaver Construction Management, Inc., jeff@weavercm.com

Mr. John Jacob, Project Mgr., Weaver Construction Management, Inc., john@weavercm.com

Mr. Adam Roeder, Weaver Construction Management, Inc., aroeder@weavercm.com

Ms. Leslie Brown, Weaver Construction Management, Inc., leslie@weavercm.com

cc (w/attachments): Mr. Jerry Miller, Resident Project Representative, GMS, Inc.

X-Original-To: mamorton@gmsengr.com
Delivered-To: mamorton@gmsengr.com
From: John Jacob <john@weavercm.com>
To: Mark Morton <mamorton@gmsengr.com>
Subject: RE: 11373-002.D.pdf posted for review
Thread-Topic: 11373-002.D.pdf posted for review
Thread-Index: Ac3W8TSCiMURMT9RTrmx3x6HWXzUAARuiaAAiyrXA=
Date: Mon, 10 Dec 2012 20:33:33 +0000
Accept-Language: en-US
X-MS-Has-Attach: yes
X-MS-TNEF-Correlator:
x-originating-ip: [10.0.5.147]
Mailarmory-Level:
Mailarmory-Category: clean (0)
Mailarmory-Filter-Date: Mon, 10 Dec 2012 13:33:48 -0700 (MST)
Mailarmory-Details:
U2FsdGVkX19dMcMz3F9mRnJJC5ni9dydo5GhZ9S81ZEeDcl8GUD5QibUlpDakwAGWNjmkuYNoFA
Md2G7Jnh9BQ==

They model numbers were noted at the top of page 2, but they had the incorrect NPT sizes indicated. See attached.

John

From: Mark Morton [mailto:mamorton@gmsengr.com]
Sent: Monday, December 10, 2012 11:40 AM
To: Leslie Brown; Kim Wellington (kwellington@gmsengr.com); Dave Frisch; Roger Sams
Cc: Adam Roeder; Jeff Burst; John Jacob
Subject: Re: 11373-002.D.pdf posted for review

John,

Can you complete all model number designations on page 2 of 2 of the data sheets for the L990.34 diaphragm seal per my last email dated 12-7-12. I see that page 1 of 2 of the data sheets indicates a 1/2" NPT process connection, but the other five parameters are not indicated. Please reply with these items via email as soon as possible. Thanks.

At 09:13 AM 12/10/2012, Leslie Brown wrote:

This e-mail message is intended only for named recipients. It contains information that may be confidential, privileged, or otherwise exempt from disclosure under applicable law. If you have received this

message in error, are not a named recipient, or are not the employee or agent responsible for delivering this message to a named recipient, be advised that any review, disclosure, use, dissemination, distribution, or

reproduction of this message or its contents is strictly prohibited.

Please notify us immediately at 816.746.7274 or at dmeyer@garney.com that

you have received this message in error, and delete the message. Thank you. Visit us on the web at

<http://www.Garney.com>

Mark A. Morton, P.E.
GMS, Inc.
611 N. Weber, Ste. 300
Colorado Springs, CO 80903
Phone: 719-475-2935
Fax: 719-475-2938

This e-mail message is intended only for named recipients. It contains information that may be confidential, privileged, or otherwise exempt from disclosure under applicable law. If you have received this message in error, are not a named recipient, or are not the employee or agent responsible for delivering this message to a named recipient, be advised that any review, disclosure, use, dissemination, distribution, or reproduction of this message or its contents is strictly prohibited. Please notify us immediately at 816.746.7274 or at dmeyer@garney.com that you have received this message in error, and delete the message. Thank you. Visit us on the web at <http://www.Garney.com>



Diaphragm-Type Diaphragm Seal

All Welded Diaphragm Threaded Diaphragm Seal

Type L990.34

Diaphragm Seals

Application

Process industry diaphragm seal to combine with Bourdon tube pressure gauges. Intended for corrosive, contaminated, hot or viscous pressure media.

Design

Upper and lower housing welded with internal welded diaphragm, threaded process connection; requires hydraulic fluid to transmit pressure to instrument

Process Connection

1/4" NPT to 1" NPT **Using 1/2" NPT**

Instrument Connection

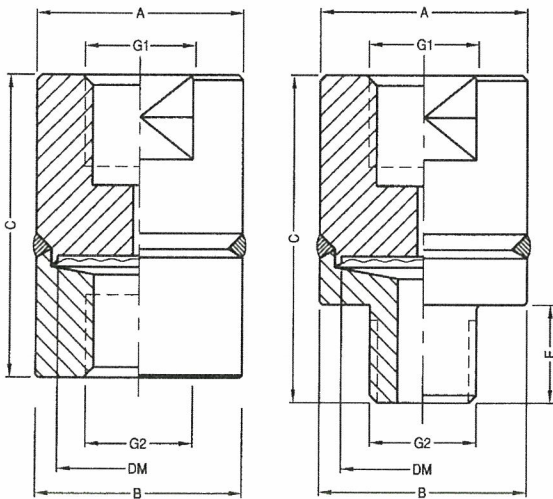
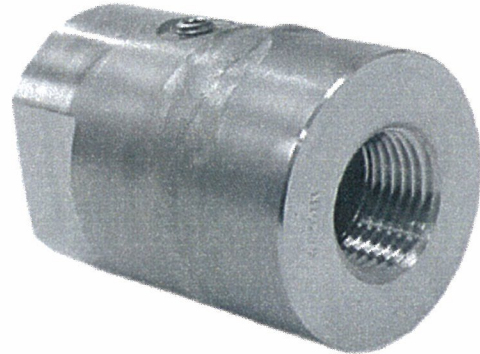
Capillary, 1/4" or 1/2" NPT-female

Suitable Pressure Ranges

~~2 1/2" Gauge: 100PSI to 9000PSI~~

4 and 4 1/2" Gauge: 400PSI to 9000PSI

Available Options (connections, materials, flushing ports, etc.)
See Selection Guide (over)



G1: INSTRUMENT CONNECTION
G2: PROCESS CONNECTION
DM: EFFECTIVE DIAPHRAGM DIAMETER
ALL DIMENSIONS IN INCHES UNLESS OTHERWISE NOTED

G1	G2	A	B	C	DM	E	WEIGHT
							lbs.
1/4"NPT OR 1/2"NPT	1/2"NPT MALE	1.60	1.56	2.50	1.3	0.75	0.77
	1/4"NPT OR 1/2"NPT FEMALE		1.60	2.32		N/A	0.77

DWG.#2212170-5

To determine the effects of temperature and response time in a specific application, contact the factory for an **Application Questionnaire**. The information provided will allow WIKA Technical Support to accurately model your application parameters using state-of-the-art computer simulation techniques.

ACS L990.34
(ACS 99.12)

Selection Guide - L990.34

L990.34, 1/4X1/4F-0, SS, SS, SS

Diaphragm Material

SS = 316 stainless steel

MO = Monel® 400 (See note 2)

HC = Hastelloy® C-276

Lower Housing Material

SS = 316 stainless steel

MO = Monel® 400 (See note 2)

HC = Hastelloy® C-276

Upper Housing Material

SS = 316 stainless steel

MO = Monel® 400 (See note 2)

HC = Hastelloy® C-276

Flushing Connection (See note 1)

0 = None

1 = 1/8" NPT female

2 = 1/4" NPT female

Process Connection

1/4F = 1/4" NPT female

1/2F = 1/2" NPT female

1/4M = 1/4" NPT male

1/2M = 1/2" NPT male

3/4M = 3/4" NPT male

1.0M = 1" NPT male

Instrument Connection

1/4 = 1/4" NPT female

1/2 = 1/2" NPT female

CPL = Capillary connection (To weld capillary directly to seal)

Diaphragm Seal Design (Pressure rating – 9,000PSI)

L990.34 = All Welded Design

Notes

1. Customer to supply flushing plug.
2. Upper housing, diaphragm and lower housing must be the same material.

*Items in **bold** are available from stock (subject to prior sales). For optional items, consult factory for current lead-time.*

Options not listed may be available, please consult factory.
Fill Fluid & Mounting options: Please reference data sheet ACS 99.MO

THE MEASURE OF
Total Performance™

Ordering Information:

State computer part number (if available) / type number / size / range / connection size and location / options required.

Specifications given in this price list represent the state of engineering at the time of printing. Modifications may take place and the specified materials may change without prior notice

05/01



WIKA Instrument Corporation

1000 Wiegand Boulevard

Lawrenceville, Georgia 30043-5868

Tel: 770-513-8200 Fax: 770-338-5118

http://www.wika.com e-mail: chemseal@wika.com