

GMS, INC.
CONSULTING ENGINEERS
611 NORTH WEBER, SUITE 300
COLORADO SPRINGS, COLORADO 80903-1074

TELEPHONE (719) 475-2935
TELEFAX (719) 475-2938

EDWARD D. MEYER, P.E.
ROGER J. SAMS, P.E.
GREGORY R. WORDEN, P.E.
THOMAS A. McCLERNAN, P.E.

KEN L. WHITE, P.L.S.
DAVID R. FRISCH, P.L.S.
MARK A. MORTON, P.E.
JASON D. MEYER, P.E.

April 27, 2012

Mr. Wes Weaver, President
Weaver Construction Management, Inc.
3679 South Huron Street, Suite 404
Englewood, CO 80110

Via Email to: wes@weavercm.com
No Hard Copy to Follow

Re: Harold D. Thompson Regional Water Reclamation Facility (HDTRWRF)
Lower Fountain Metropolitan Sewage Disposal District (LFMSDD)

Dear Wes:

Reference is made to your shop submittal identified as follows:

Submittal No.:	02709-006
Date of Submittal:	April 11, 2012
Title:	Precast Manholes for Lines B, I and K
Specification Section:	02709 – Gravity Pipelines and Appurtenances
Manufacturers:	Oldcastle Precast; Concrete Sealants Inc.; LADTECH, Inc.; Trelleborg Pipe Seals Milford, Inc.; GMI Composites Inc.; Carboline Company

The referenced submittal has been stamped "**No Exception Taken**" and "**Make Corrections Noted**". Our comments are as follows:

1. ConSeal[®] CS102: **No Exception Taken**
2. ConSeal[®] CS-212: **No Exception Taken**
3. 48" Diameter Manhole Material Standard Drawings, Pages 1 of 5, 3 of 5, 4 of 5 and 5 of 5: **Make Corrections Noted**
 - a. No steps are to be placed in the manholes.
4. 72" Diameter Manhole Material Standard Drawings, Pages 1 of 4, 3 of 4 and 4 of 4: **Make Corrections Noted**
 - a. No steps are to be placed in the manholes.
5. High Density Polyethylene Manhole Adjustment Ring, Flat Design: **No Exception Taken**
6. Kor-N-Seal[®] II 206 Series Pipe-to-Manhole Connector: **No Exception Taken**
7. 2400 Series GMI Fiber Reinforced Polymer Manhole Ring and Cover: **Make Corrections Noted**
 - a. The locking device is not required for manholes lying within the secured wastewater treatment facility.
8. Carboline[®] Bitumastic[®] 300 M (Coal Tar Epoxy) Exterior Coating for Manholes: **No Exception Taken**

9. Manhole Details, Page 1 of 8, MH-03: **No Exception Taken** and **Make Corrections Noted**

a. Detail sheet indicates:

- No steps in manhole
- 12" joint wrap on exterior joints
- **Contractor:** Note Sher-Flex interior lining is required.

10. Manhole Details, Page 2 of 8, MH-02: **No Exception Taken** and **Make Corrections Noted**

a. Detail sheet indicates:

- No steps in manhole
- 12" joint wrap on exterior
- **Contractor:** Note Sher-Flex interior lining is required.

11. Manhole Details, Page 3 of 8, MH-04: **No Exception Taken** and **Make Corrections Noted**

a. Detail sheet indicates:

- No steps in manhole
- 12" joint wrap on exterior joints
- **Contractor:** Note the interior of the manhole will require coal tar epoxy.

12. Manhole Details, Page 4 of 8, MH-05: **No Exception Taken** and **Make Corrections Noted**

a. Detail sheet indicates:

- No steps in manhole
- 12" joint wrap on exterior joints
- **Contractor:** Note the interior of the manhole will require coal tar epoxy.

13. Manhole Details, Page 5 of 8, MH-13A: **No Exception Taken**

a. Detail sheet indicates:

- No steps in manhole
- Manhole to receive ring and cover with adjusting rings
- 12" joint wrap on exterior joints
- Interior of manhole to be coated with coal tar epoxy

14. Manhole Details, Page 6 of 8, MH-13: **No Exception Taken**

a. Detail sheet indicates:

- No steps in manhole
- Manhole to receive composite ring and cover with plastic adjusting rings
- 12" joint wrap on exterior joints
- Interior of manhole to be coated with coal tar epoxy

Mr. Wes Weaver
April 27, 2012
Page 3

15. Manhole Details, Page 7 of 8, MH-12A: **Make Corrections Noted**

- a. Rim elevation 410.7
 - Invert 1 = 398.53
 - Invert 2 = 399.00
 - Invert 3 = 398.83
- b. Detail sheet indicates:
 - No steps in manhole
 - Manhole to receive composite ring and cover with plastic adjusting rings
 - 12" joint wrap on exterior joints
 - Interior of manhole to be coated with coal tar epoxy
- c. **Contractor:** See attached Sheets G-30 and G-39 showing revised inverts and percent of slope to south.

16. Manhole Details, Page 8 of 8, MH-12: **No Exception Taken**

- a. Detail sheet indicates:
 - No steps in manhole
 - Manhole to receive composite ring and cover with plastic adjusting rings
 - 12" joint wrap on exterior joints
 - Interior of manhole to be coated with coal tar epoxy

Please call if you should have any questions.

Sincerely,



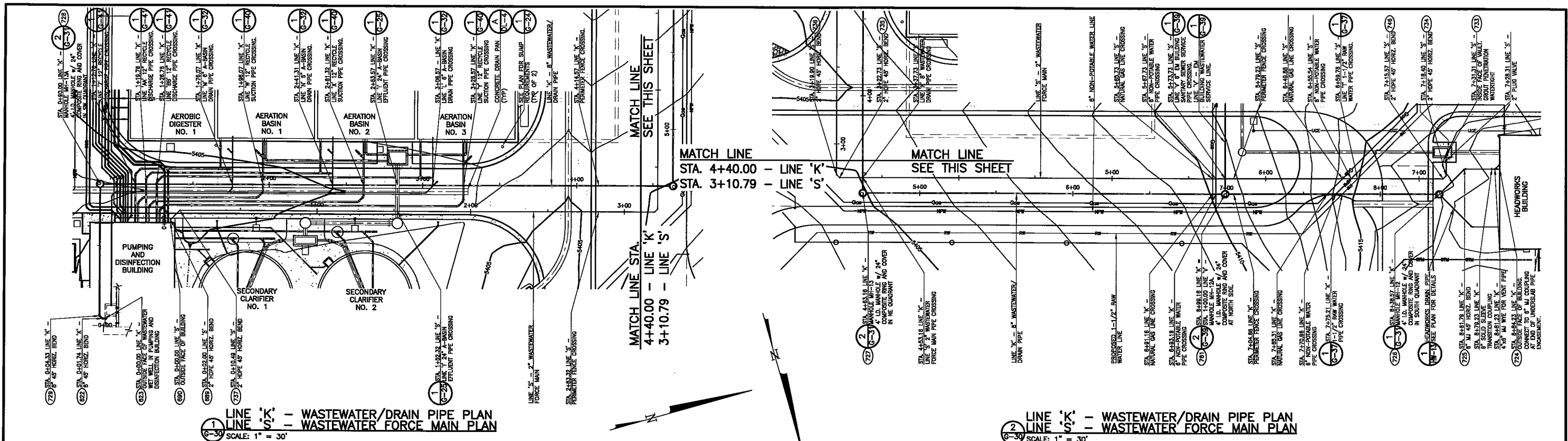
David R. Frisch, P.L.S.

DRF/kmw

ec (letter only):

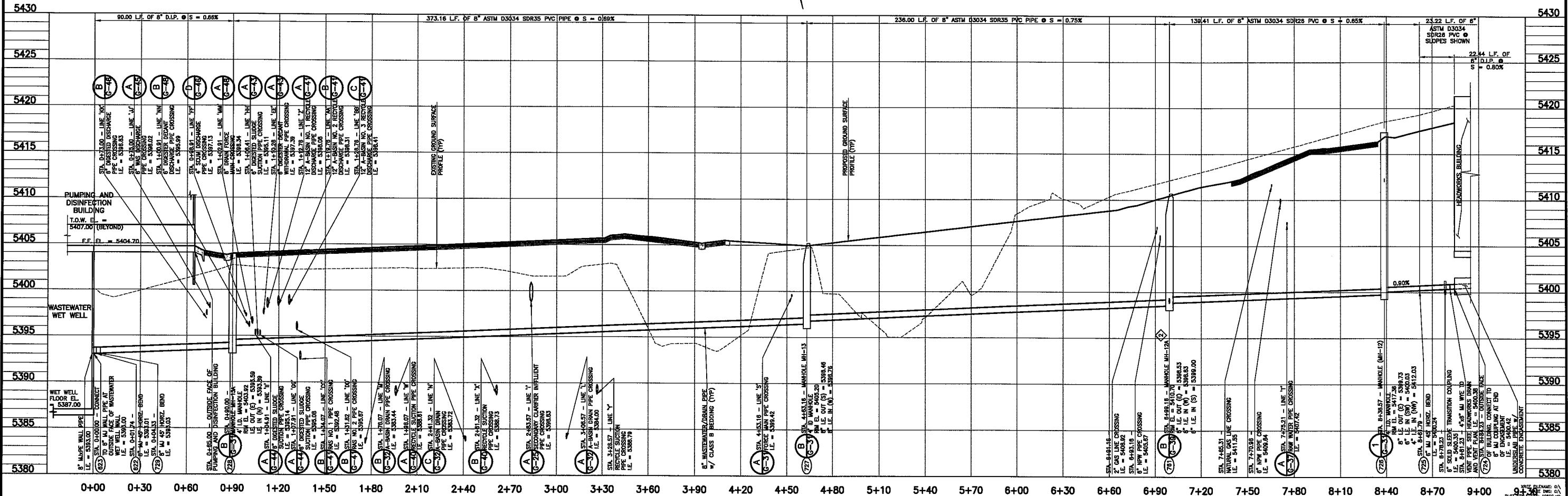
Mr. Jim Heckman, Manager, LFMSDD, lfmanager@lfmsdd.org
Ms. Cindy Murray, Office Manager, Fountain Sanitation District, fsdistrict@fsd901.org
Mr. Jeff Burst, Project Supt., Weaver Construction Management, Inc., jeff@weavercm.com
Mr. John Jacob, Project Mgr., Weaver Construction Management, Inc., john@weavercm.com
Mr. Tyler Ammerman, Weaver Construction Management, Inc., tammerman@weavercm.com
Ms. Leslie Brown, Weaver Construction Management, Inc., leslie@weavercm.com

cc: Mr. Jerry Miller, Resident Project Representative, GMS, Inc.



1 LINE 'K' - WASTEWATER/DRAIN PIPE PLAN
 LINE 'S' - WASTEWATER FORCE MAIN PLAN
 SCALE: 1" = 30'

2 LINE 'K' - WASTEWATER/DRAIN PIPE PLAN
 LINE 'S' - WASTEWATER FORCE MAIN PLAN
 SCALE: 1" = 30'



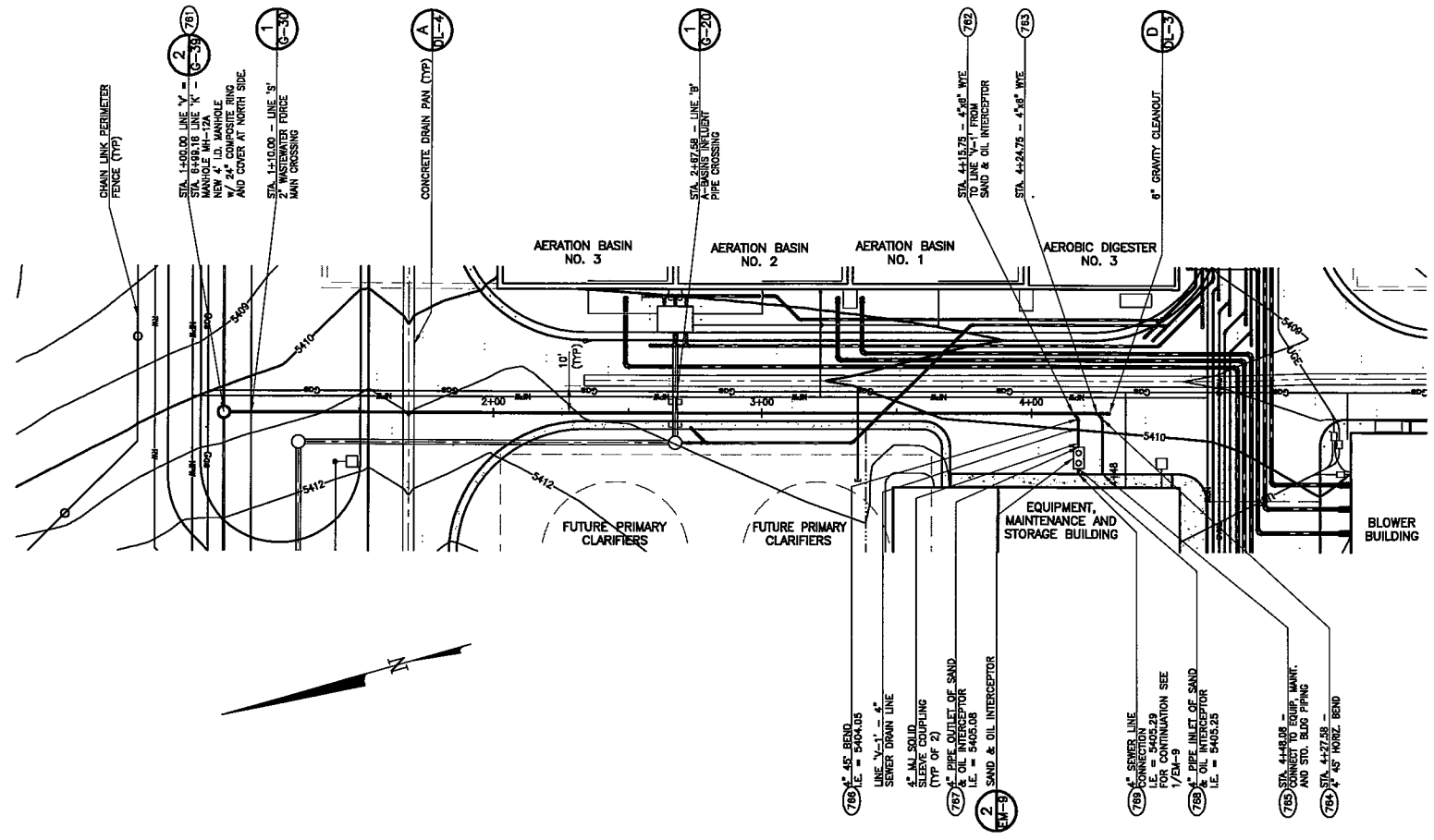
A LINE 'K' WASTEWATER/DRAIN PIPE PROFILE
 SCALE: HORIZ. 1" = 30' VERT. 1" = 5'

REVISIONS		
No.	DATE	DESCRIPTION
1	03/06/2012	ISSUED FOR CONSTRUCTION
2	04/27/2012	SHOP SUBMITTAL NO. 02709-006 COMMENTS

THIS DRAWING IS THE PROPERTY OF GMS, INC., AND IS NOT TO BE REPRODUCED, MODIFIED OR USED FOR ANY OTHER PROJECT OR EXTENSION OF THIS PROJECT EXCEPT BY AGREEMENT WITH THIS COMPANY.

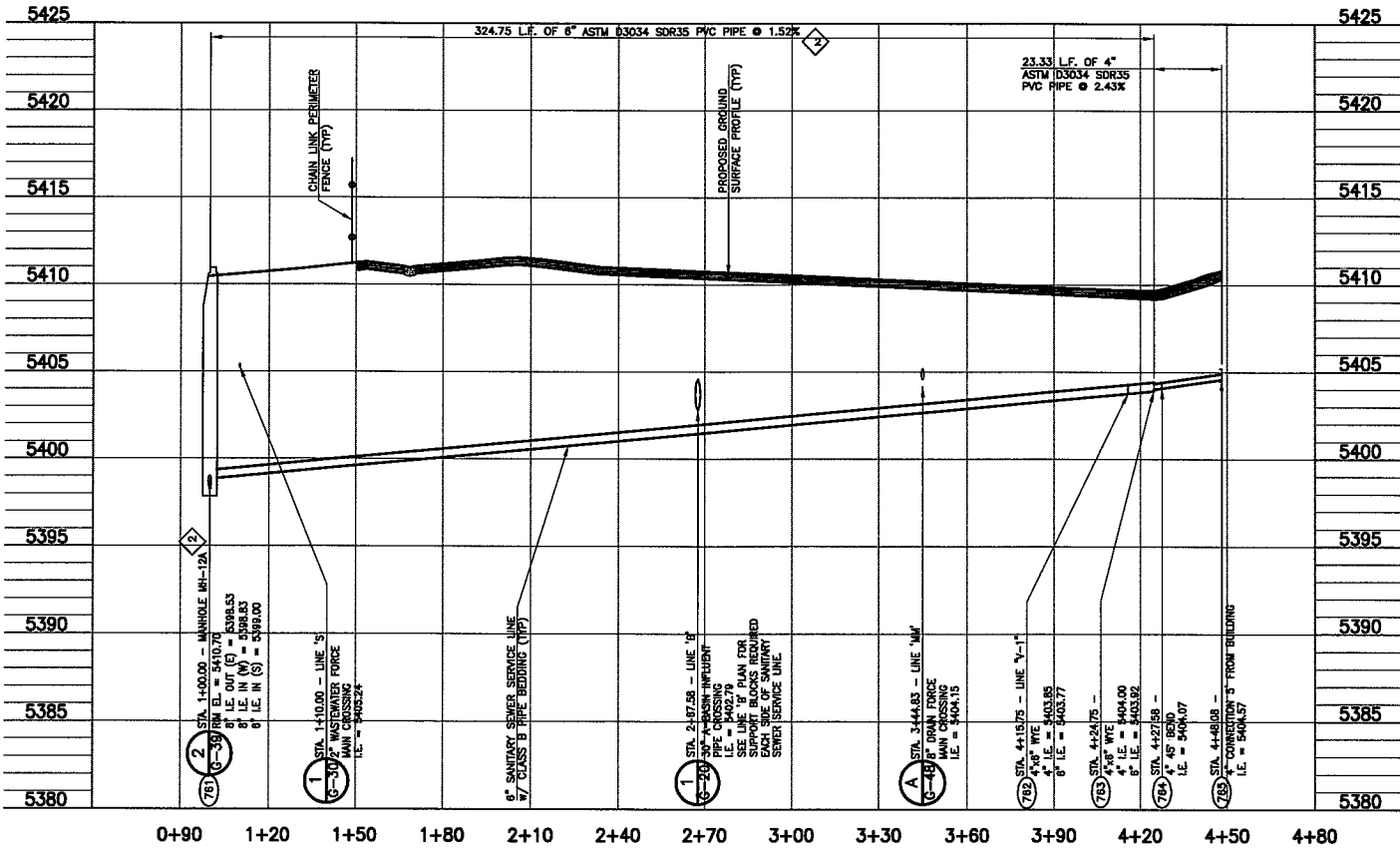
LINE 'K' - WASTEWATER/DRAIN PIPE PLAN AND PROFILE
 LINE 'S' - WASTEWATER FORCE MAIN PLAN
 HAROLD D. THOMPSON REGIONAL WATER RECLAMATION FACILITY
 LOWER FOUNTAIN METROPOLITAN SEWAGE DISPOSAL DISTRICT

DESIGNED: SKC	GMS, INC. CONSULTING ENGINEERS 611 N. WEBER, SUITE 300 COLORADO SPRINGS, COLORADO 80903	SHEET G-30 OF 1
CHECKED: MAM		
DATE: 2011		
PROJECT NO. 20166.325 GMS FILE NO. 2599		

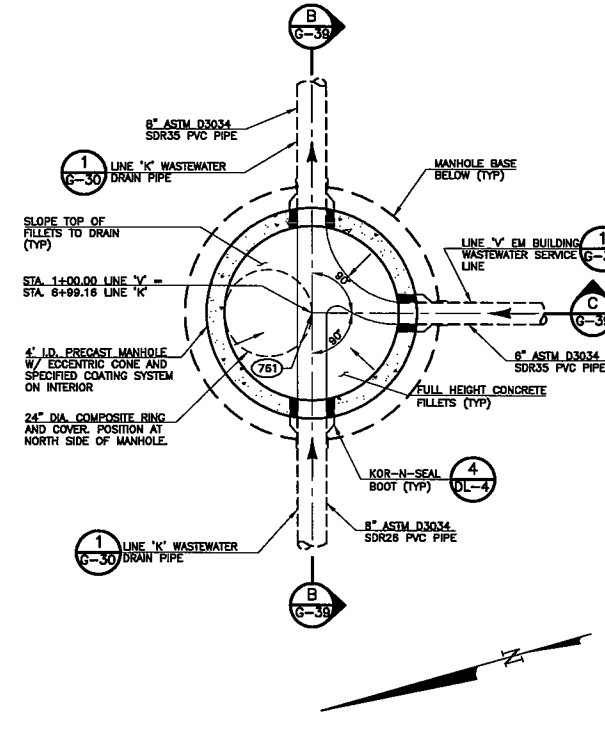


- CONSTRUCTION NOTES:**
- FURNISH AND INSTALL TRACER WIRE PER SPECIFICATION SECTION 02708 ON 6-INCH PIPELINES, STATION 1+00 TO STATION 4+24.75 AND ON 4-INCH BRANCH PIPING TO SAND AND OIL INTERCEPTOR AND EM BUILDING SEWER.
 - RUN TRACER WIRE UP OUTSIDE OF MANHOLE AT STATION 1+00 AND UP OUTSIDE OF CLEANOUT AT APPROXIMATE STATION 4+29 LT. EXTEND TRACER WIRE UP OUTSIDE OF SAND AND OIL INTERCEPTOR AND AT FOUNDATION.

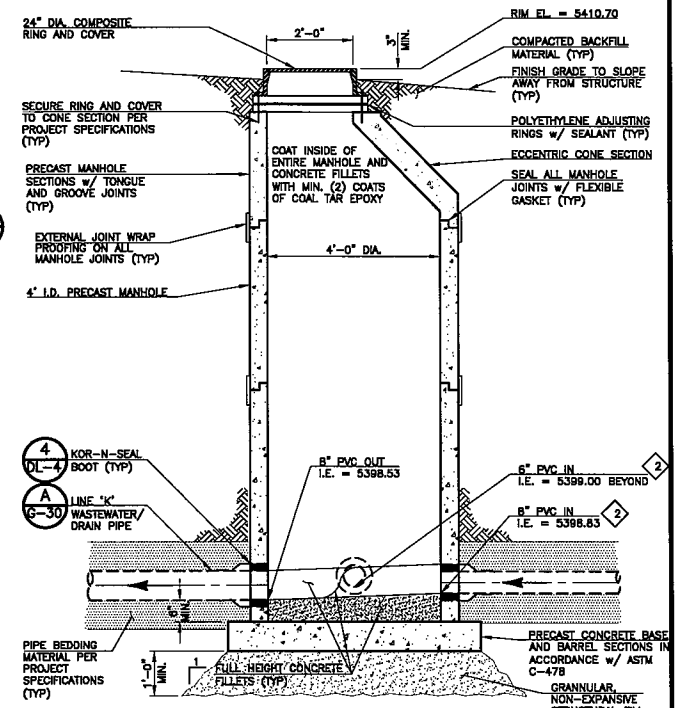
1 LINE 'V' - EM BUILDING SANITARY SEWER SERVICE LINE PLAN
 SCALE: 1" = 30'



A LINE 'V' - EM BUILDING SANITARY SEWER SERVICE LINE PROFILE
 SCALE: HORIZ. 1" = 30' VERT. 1" = 5'



2 MANHOLE MH-12A PLAN
 SCALE: 1/2" = 1'-0"



B MANHOLE MH-12A SECTION
 SCALE: 1/2" = 1'-0"

REVISIONS		
NO.	DATE	DESCRIPTION
1	03/09/2012	ISSUED FOR CONSTRUCTION
2	04/27/2012	SHOP SUBMITTAL NO. 02709-006 COMMENTS

THIS DRAWING IS THE PROPERTY OF GMS, INC., AND IS NOT TO BE REPRODUCED, MODIFIED OR USED FOR ANY OTHER PROJECT OR EXTENSION OF THIS PROJECT EXCEPT BY AGREEMENT WITH THIS COMPANY.

LINE 'V' - EM BUILDING SANITARY SEWER SERVICE LINE PLAN AND PROFILE AND DETAILS
 HAROLD D. THOMPSON REGIONAL WATER RECLAMATION FACILITY
 LOWER FOUNTAIN METROPOLITAN SEWAGE DISPOSAL DISTRICT

DESIGNED	SKC
CHECKED	MAM
DATE	2012
PROJECT NO.	20166.325
GMS FILE NO.	2599

GMS, INC.
 CONSULTING ENGINEERS
 611 N. WEBER, SUITE 300
 COLORADO SPRINGS, COLORADO 80903

SHEET **G-39** OF -

G:\LFMSDD\20166325\G39.dwg, G39, 4/27/2012 10:25:35 AM, drf, \GMS\SSV02\WorkCentre 7345 PS, 1:2.2